

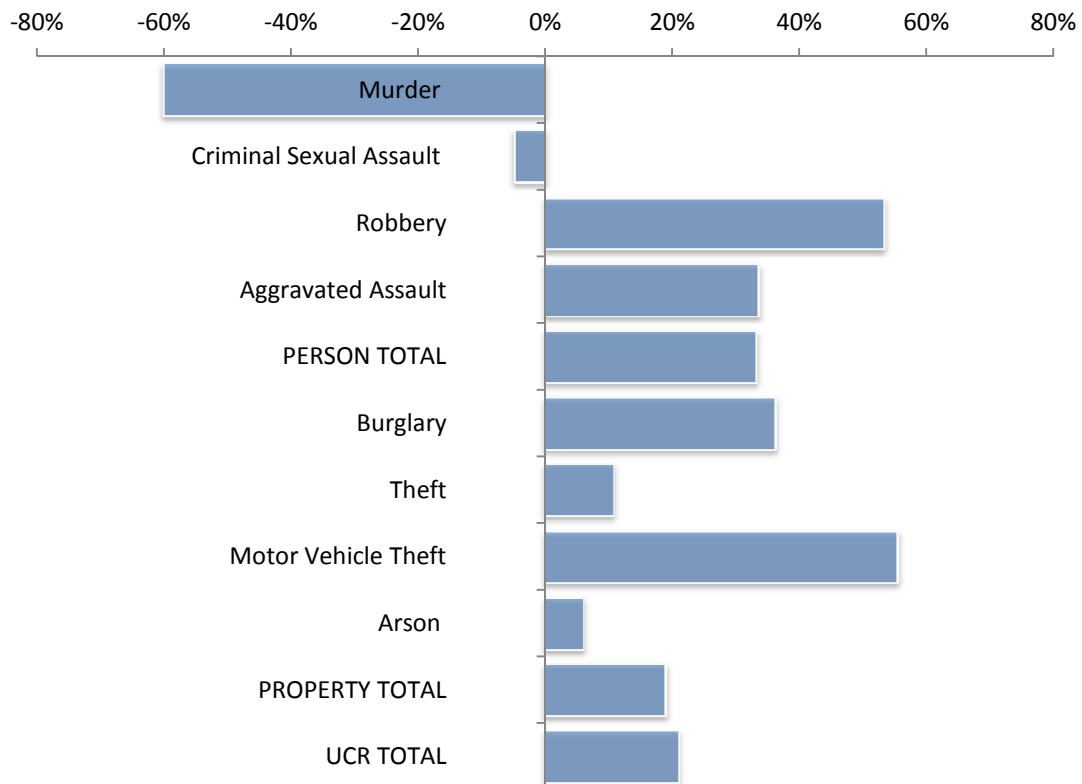
CRIME SUMMARY

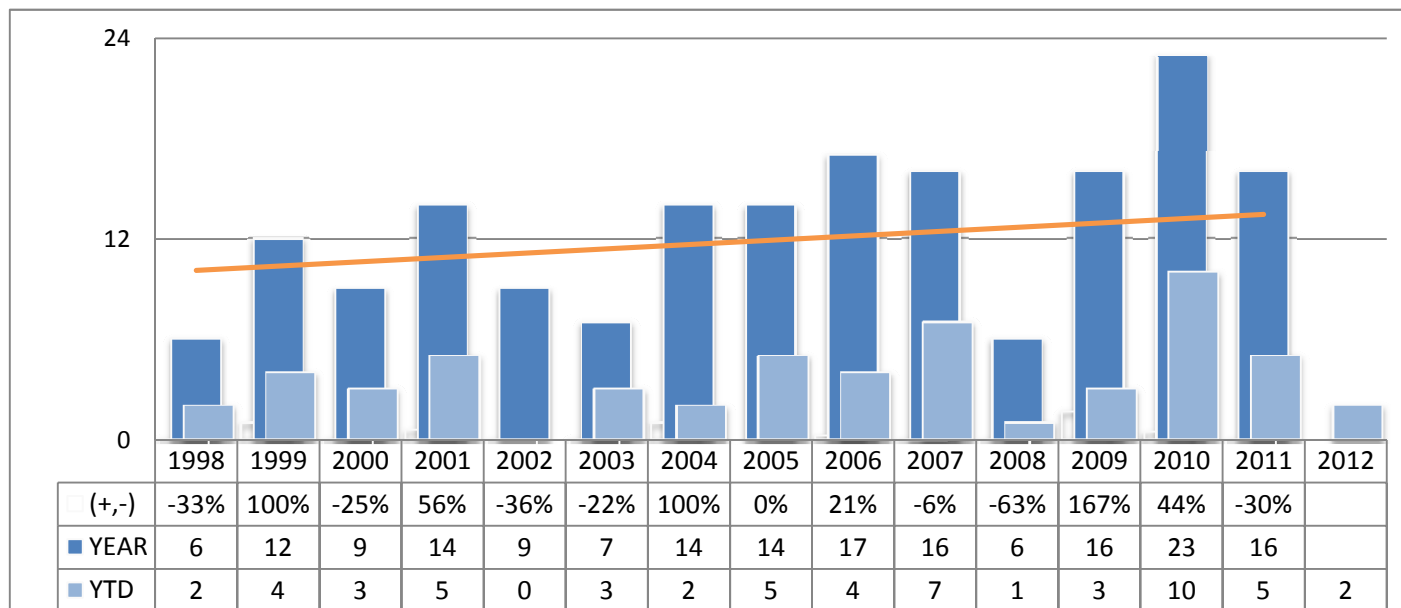
Index Crime - YTD APRIL 2012

City of Peoria Index Crime Is Up +21 % thru April 2012

	2009	2010	2011	2012	(+ , -)
Murder	3	10	5	2	-60%
Criminal Sexual Assault	35	14	21	20	-5%
Robbery	138	81	60	92	53%
Aggravated Assault	150	201	131	175	34%
PERSON TOTAL	326	306	217	289	33%
Burglary	364	429	341	464	36%
Theft	975	1,045	904	1,001	11%
Motor Vehicle Theft	101	71	47	73	55%
Arson	17	17	17	18	6%
PROPERTY TOTAL	1,457	1,562	1,309	1,556	19%
UCR TOTAL	1,783	1,868	1,526	1,845	21%

Y-T-D PERCENT CHANGE 2012 vs. 2011





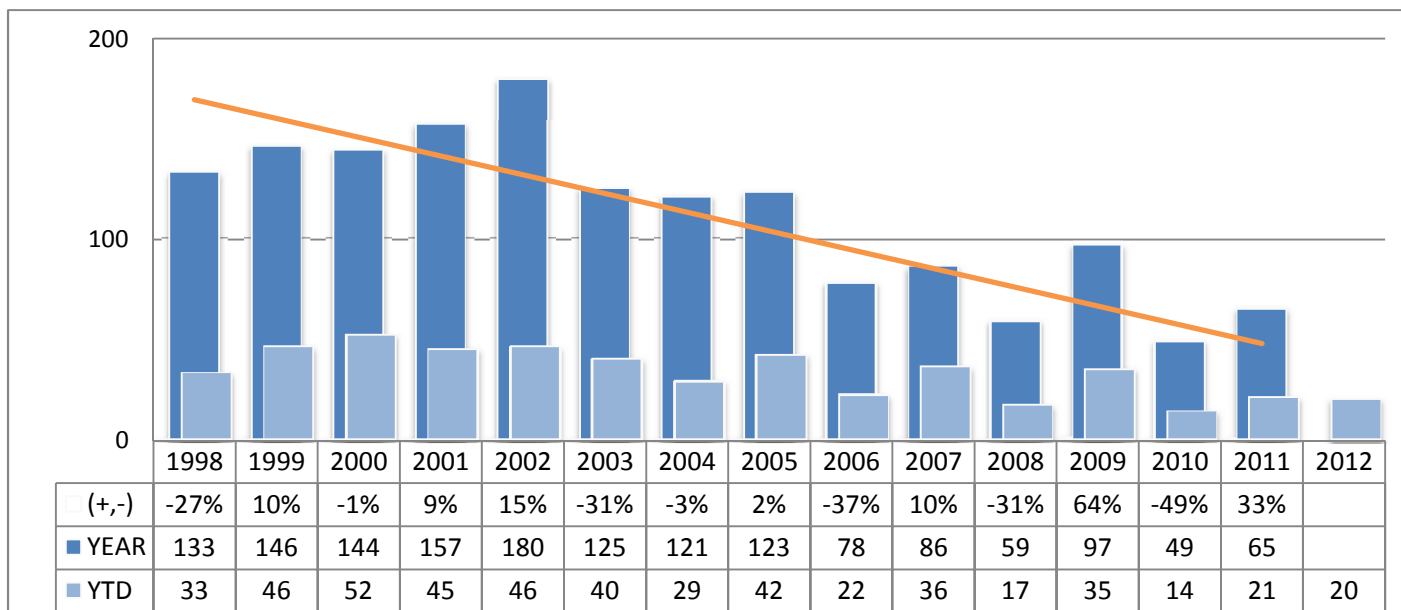
Data source: Records Dept UCR report - INCIDENT BASED

MURDER

Crimes - UCR Violent / Person

	2011	2012	(+, -)
Jan	1	0	-100%
Feb	1	0	-100%
Mar	1	1	0%
Apr	2	1	-50%
May	0		
Jun	2		
Jul	1		
Aug	2		
Sep	1		
Oct	2		
Nov	2		
Dec	1		
YEAR	16		
YTD	5	2	-60%

Offenses 0110, 30; does not include attempts.



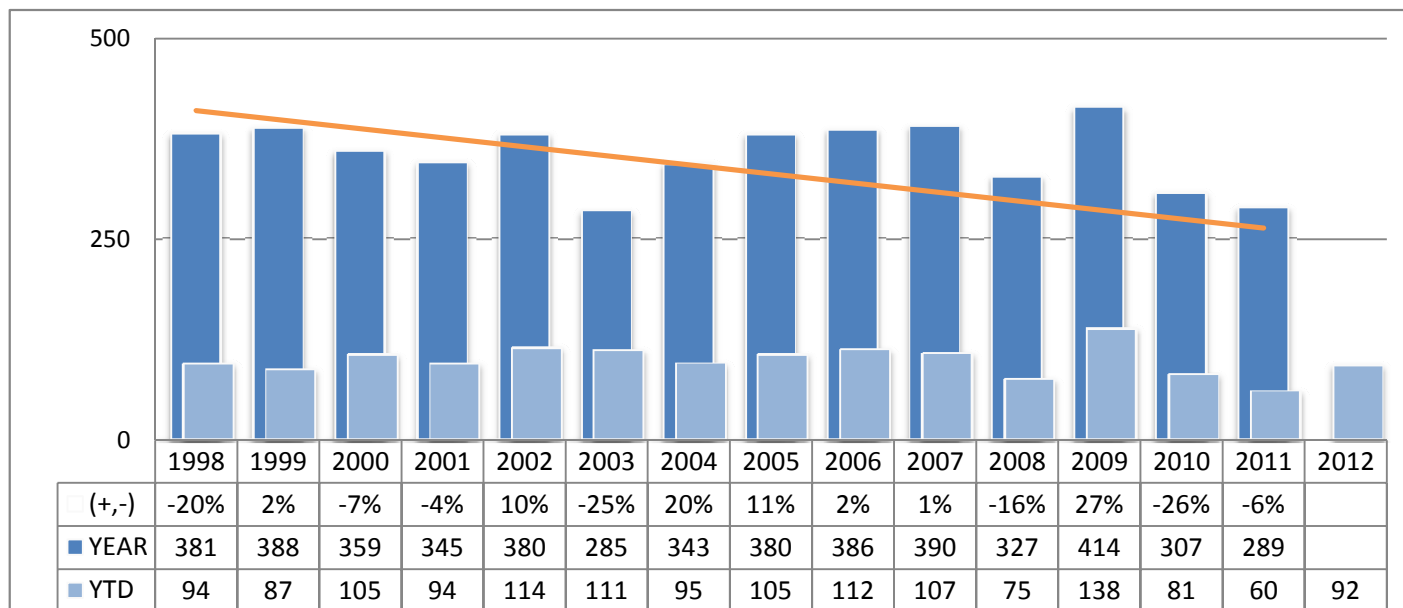
Data source: Records Dept UCR report - INCIDENT BASED

CRIMINAL SEXUAL ASSAULT

Crimes - UCR Violent / Person

	2011	2012	(+, -)
Jan	5	6	20%
Feb	5	6	20%
Mar	5	5	0%
Apr	6	3	-50%
May	9		
Jun	4		
Jul	9		
Aug	5		
Sep	3		
Oct	5		
Nov	3		
Dec	6		
YEAR	65		
YTD	21	20	-5%

Offenses 0260, 61, 62, 81; attempts included.



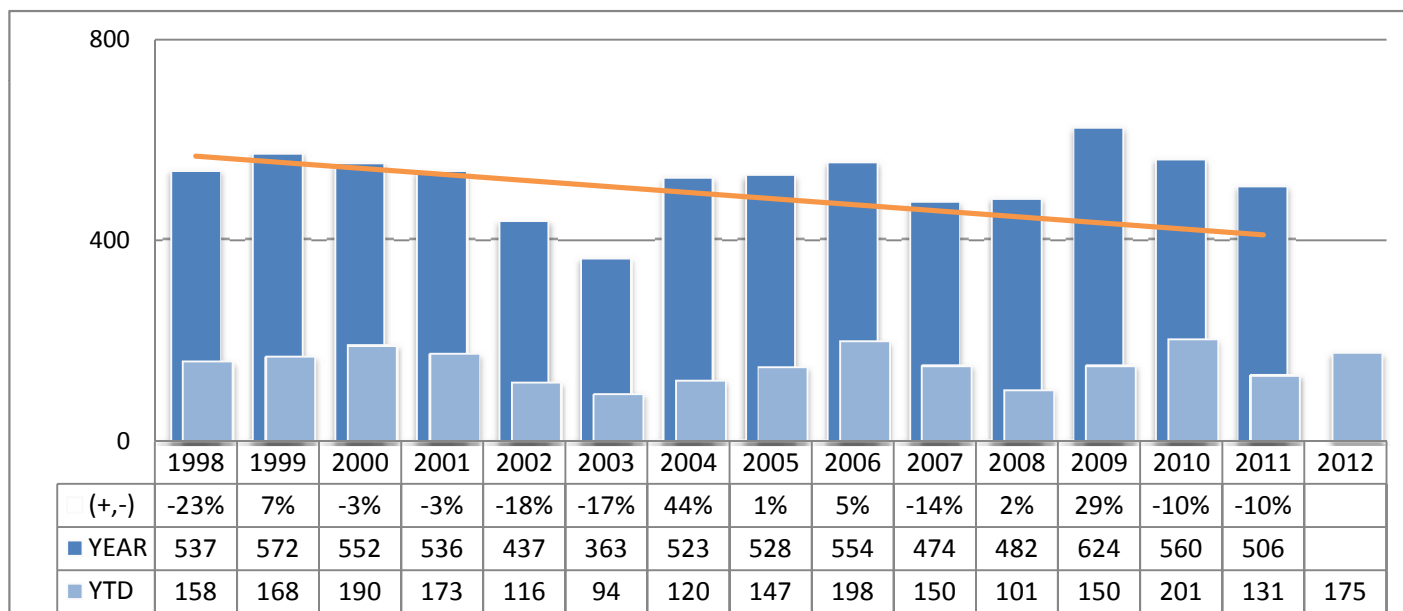
Data source: Records Dept UCR report - INCIDENT BASED

ROBBERY

Crimes - UCR Violent / Person

	2011	2012	(+, -)
Jan	16	27	69%
Feb	10	23	130%
Mar	15	17	13%
Apr	19	25	32%
May	20		
Jun	26		
Jul	18		
Aug	27		
Sep	27		
Oct	46		
Nov	27		
Dec	38		
YEAR	289		
YTD	60	92	53%

Offenses 0310, 20, 25, 26, 30; attempts included



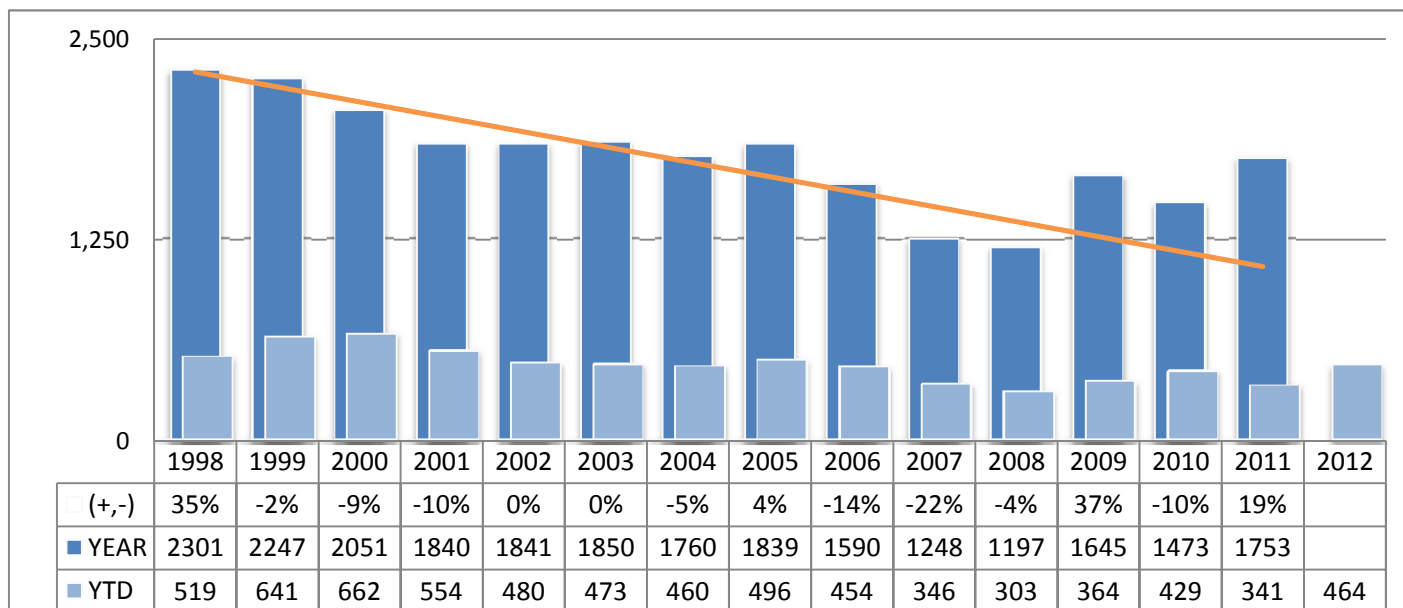
Data source: Records Dept UCR report - INCIDENT BASED

AGGRAVATED ASSAULT / BATTERY

Crimes - UCR Violent / Person

	2011	2012	(+, -)
Jan	32	47	47%
Feb	16	46	188%
Mar	36	37	3%
Apr	47	45	-4%
May	52		
Jun	57		
Jul	54		
Aug	39		
Sep	41		
Oct	54		
Nov	36		
Dec	42		
YEAR	506		
YTD	131	175	34%

Offenses 0410, 80, 85, 90, 95, 0510, 0110 att., 0130 att.



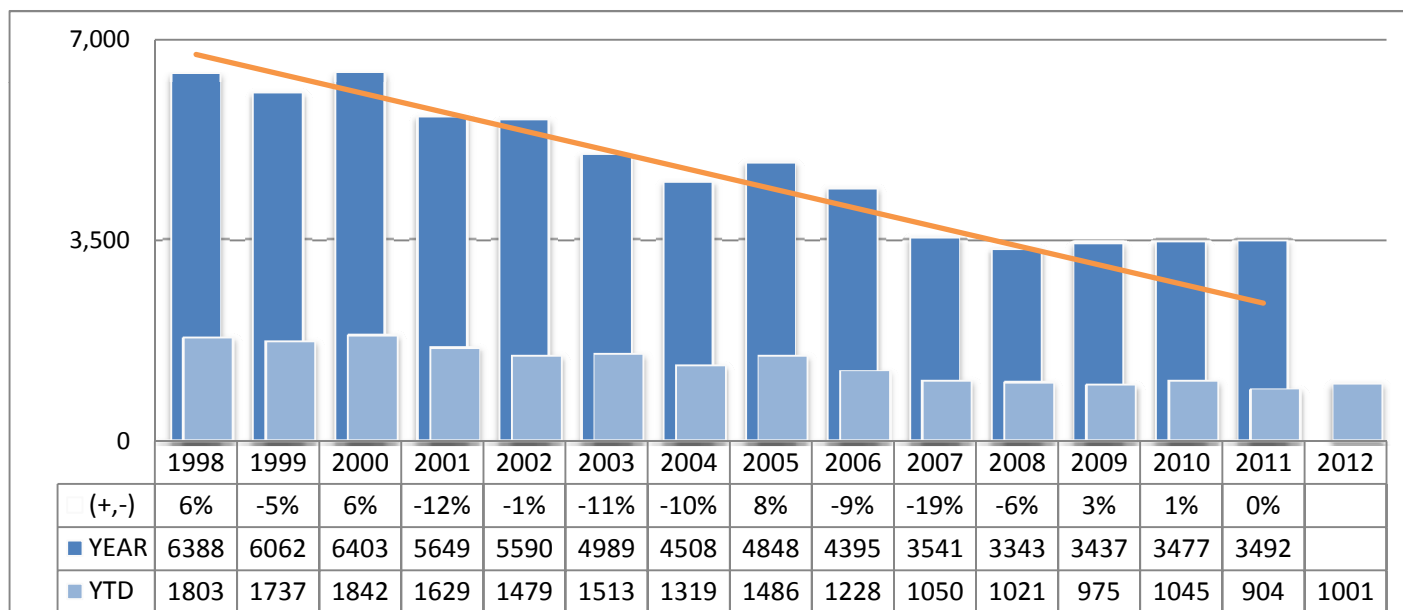
Data source: Records Dept UCR report - INCIDENT BASED

BURGLARY

Crimes - UCR Property

	2011	2012	(+, -)
Jan	100	126	26%
Feb	46	96	109%
Mar	79	112	42%
Apr	116	130	12%
May	132		
Jun	140		
Jul	163		
Aug	133		
Sep	186		
Oct	226		
Nov	228		
Dec	204		
YEAR	1,753		
YTD	341	464	36%

Offenses 0610, 25, 50; attempts included



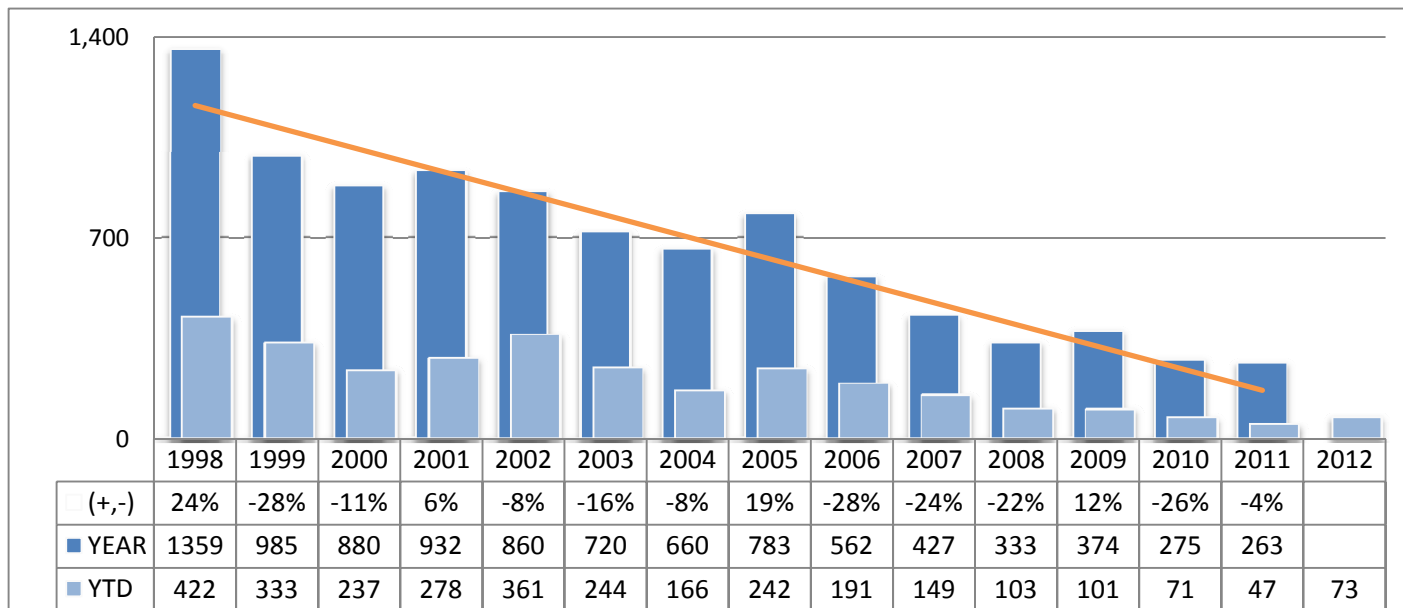
Data source: Records Dept UCR report - INCIDENT BASED

THEFT

Crimes - UCR Property

	2011	2012	(+, -)
Jan	255	250	-2%
Feb	171	211	23%
Mar	226	267	18%
Apr	252	273	8%
May	332		
Jun	308		
Jul	385		
Aug	343		
Sep	318		
Oct	334		
Nov	264		
Dec	304		
YEAR	3,492		
YTD	904	1,001	11%

Offenses 0610, 25, 50; attempts included

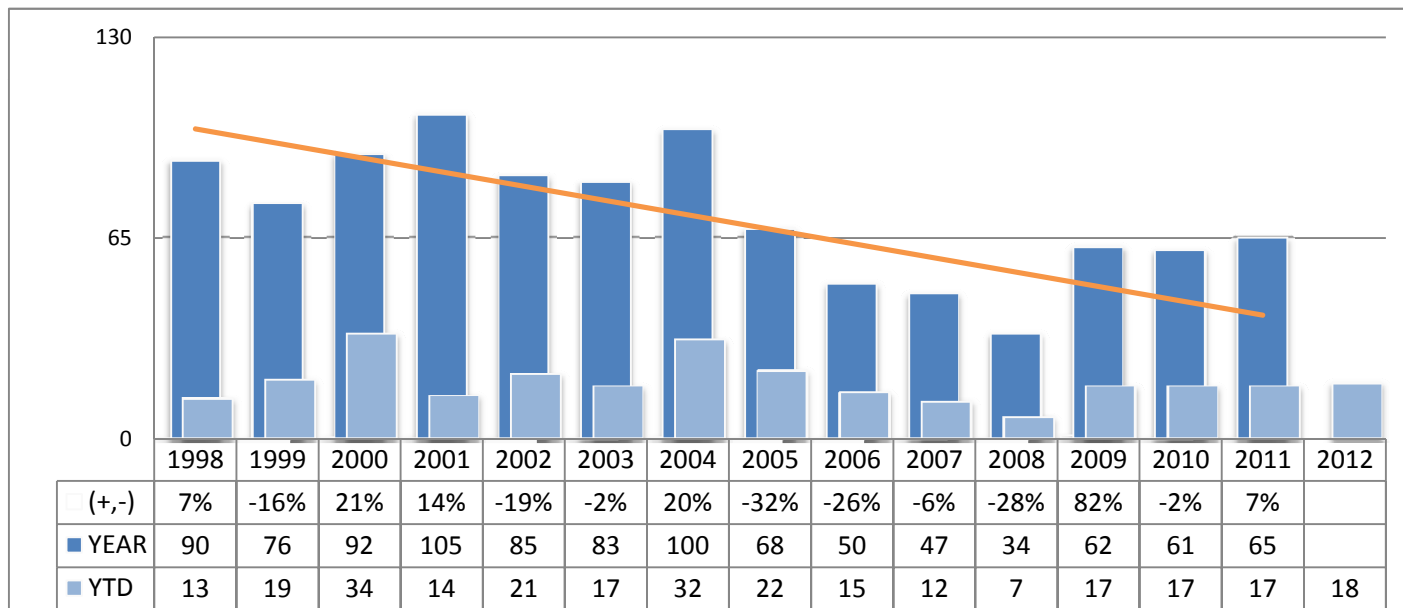


Data source: Records Dept UCR report - INCIDENT BASED

MOTOR VEHICLE THEFT

Crimes - UCR Property

	2011	2012	(+, -)
Jan	16	21	31%
Feb	7	19	171%
Mar	14	14	0%
Apr	10	19	90%
May	28		
Jun	21		
Jul	21		
Aug	25		
Sep	46		
Oct	23		
Nov	24		
Dec	28		
YEAR	263		
YTD	47	73	55%

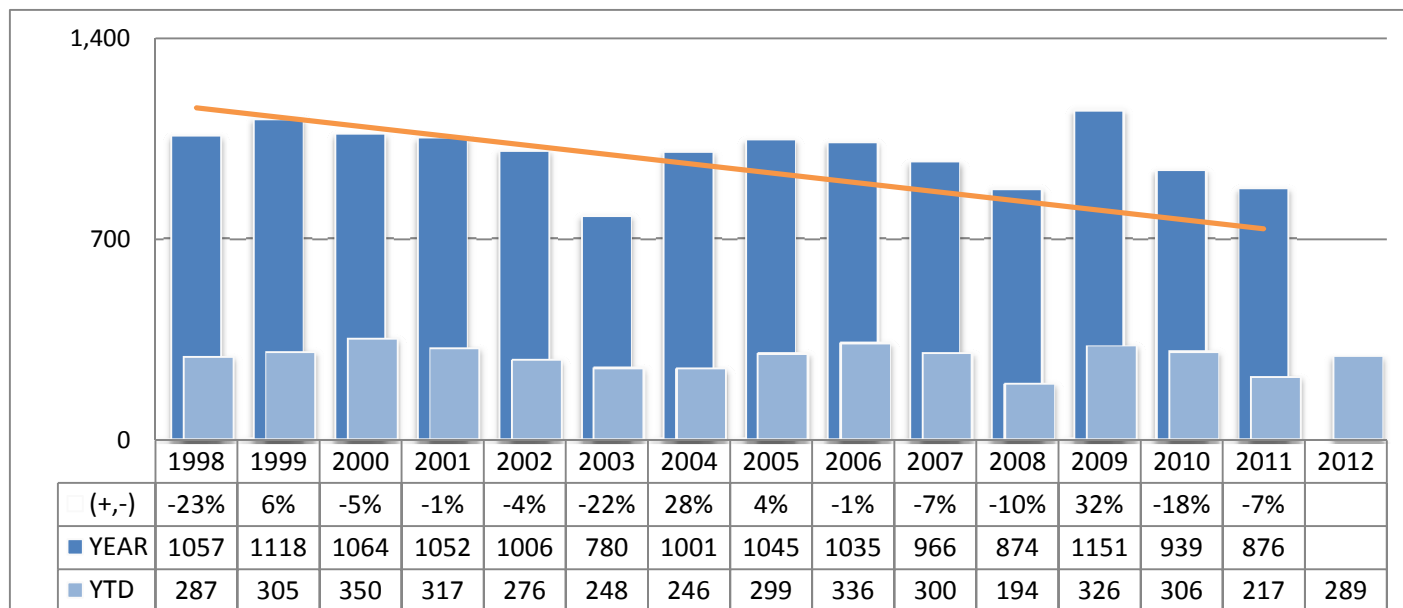


Data source: Records Dept UCR report - INCIDENT BASED

ARSON

Crimes - UCR Property

	2011	2012	(+, -)
Jan	4	1	-75%
Feb	4	5	25%
Mar	5	1	-80%
Apr	4	11	175%
May	9		
Jun	5		
Jul	7		
Aug	3		
Sep	7		
Oct	6		
Nov	5		
Dec	6		
YEAR	65		
YTD	17	18	6%

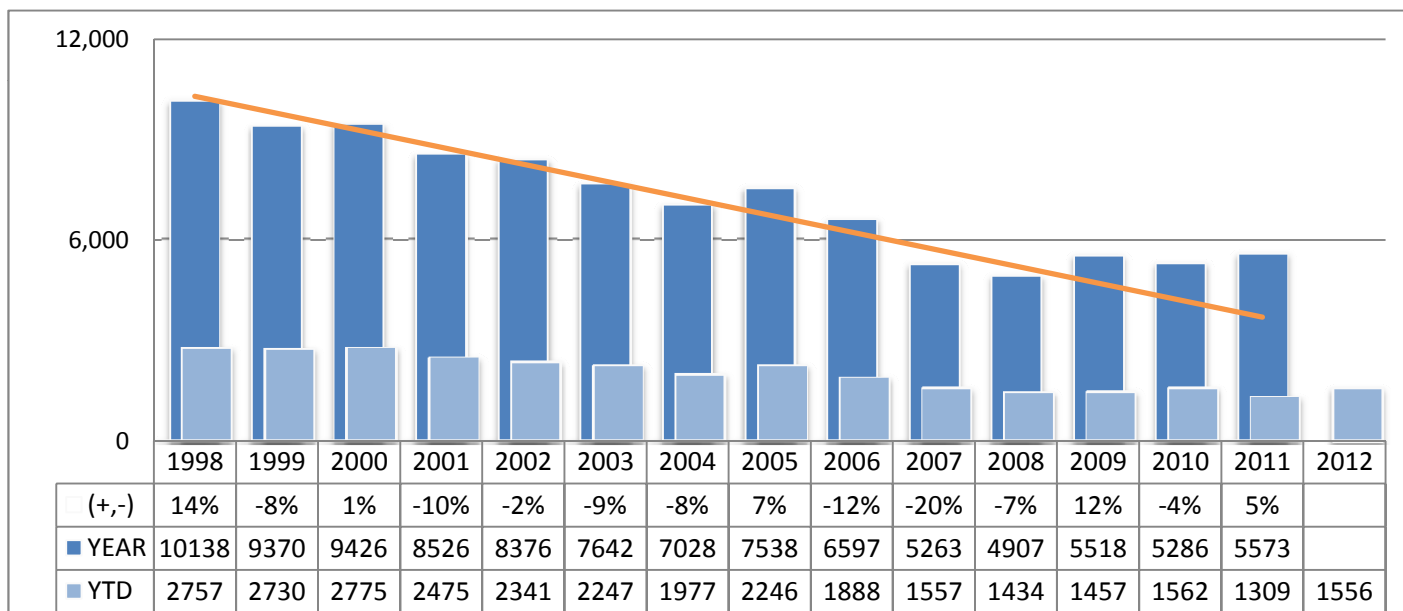


Data source: Records Dept UCR report - INCIDENT BASED

TOTAL PERSON CRIMES

Crimes - UCR

	2011	2012	(+, -)
Jan	54	80	48%
Feb	32	75	134%
Mar	57	60	5%
Apr	74	74	0%
May	81		
Jun	89		
Jul	82		
Aug	73		
Sep	72		
Oct	107		
Nov	68		
Dec	87		
YEAR	876		
YTD	217	289	33%

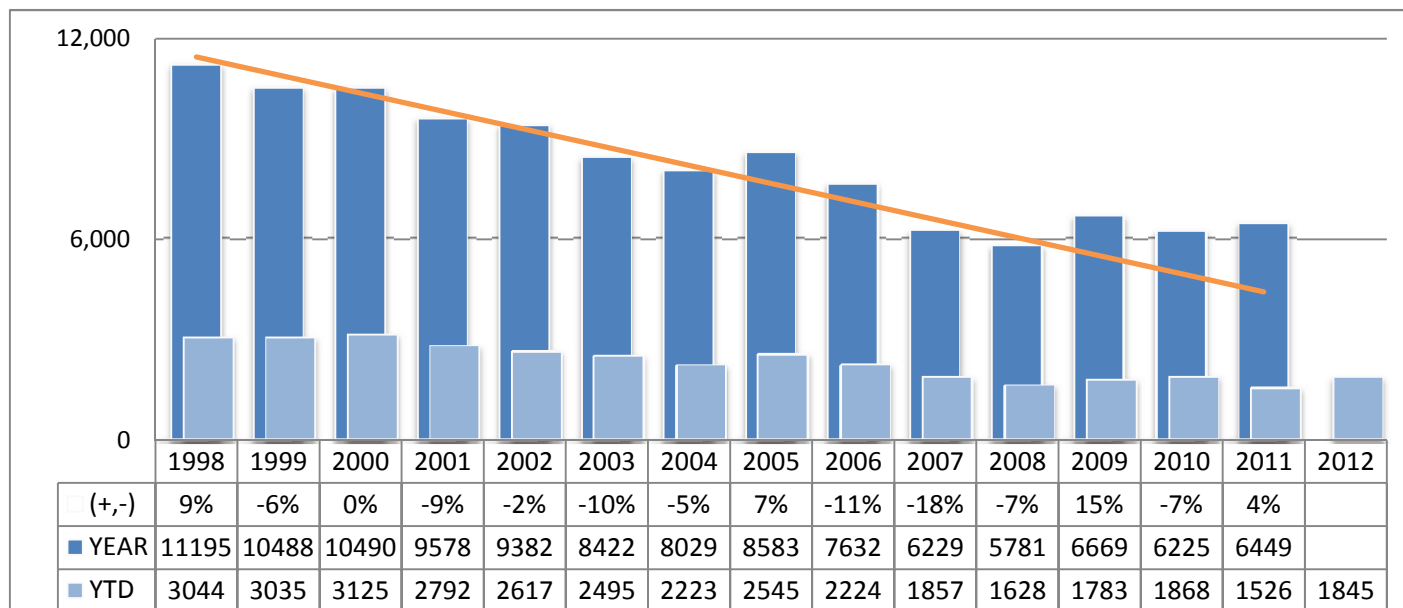


Data source: Records Dept UCR report - INCIDENT BASED

TOTAL PROPERTY CRIMES

Crimes - UCR

	2011	2012	(+, -)
Jan	375	398	6%
Feb	228	331	45%
Mar	324	394	22%
Apr	382	433	13%
May	501		
Jun	474		
Jul	576		
Aug	504		
Sep	557		
Oct	589		
Nov	521		
Dec	542		
YEAR	5,573		
YTD	1,309	1,556	19%



Data source: Records Dept UCR report - INCIDENT BASED

TOTAL PERSON & PROPERTY

Crimes - UCR

	2011	2012	(+, -)
Jan	429	478	11%
Feb	260	406	56%
Mar	381	454	19%
Apr	456	507	11%
May	582		
Jun	563		
Jul	658		
Aug	577		
Sep	629		
Oct	696		
Nov	589		
Dec	629		
YEAR	6,449		
YTD	1,526	1,845	21%