


PLANNING AND GROWTH MANAGEMENT DEPARTMENT

Memo

To: Dave Johnston, Central Fire Station
Chief Steven Settingsgaard, Police Department
David Tuttle, Emergency Communication Center
John Ramsey, Peoria County Clerk's Office
Kevin Norville, Waste Management
Election Commission
Dwain Deppolder, ESDA
Bonnie Gavin, Township Assessor
Ken Andrejasich, Public Works
Randy Swenson, Public Works Operation & Maintenance Center
Dave Marshall, Manager, Traffic & Maintenance Operations
Steve Austin, Construction Engineering
Tim Leach, Greater Peoria Sanitary District
Bill Real, AMS Office
Gregory Fisch, Julie, Inc.
Eric Miller, Program Manager, Tri-County Regional Planning Commission
Dunlap Postmaster
✓ Other Interested Parties

From: Leah Allison, AICP, Senior Urban Planner 

Date: March 30, 2007

Re: **FINAL PLAT – ROLLINGBROOK SUBDIVISION – SECTION THREE
CPC MAJOR 04-EE**

Attached is a copy of the approved subject final plat.

Feel free to contact me at 494-8667 if you have any questions regarding this matter.

LA/ps

Attachment

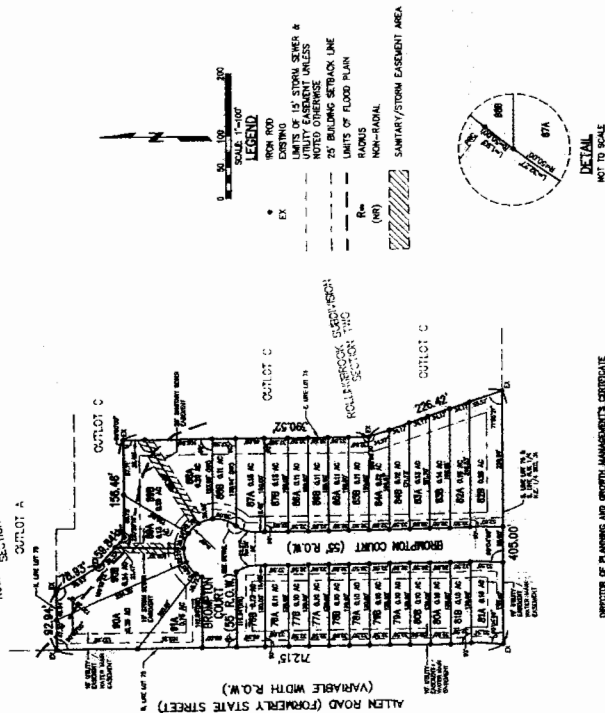
cc: Josh Naven

Dan Challacombe

ROLLINGBROOK SUBDIVISION - SECTION THREE FINAL PLAT

NORTHEAST QUARTER OF SECTION 31, TOWNSHIP 10 NORTH, RANGE 8 EAST OF THE FOURTH PRINCIPAL MERIDIAN
PEORIA, ILLINOIS

ROLLINGBROOK SUBDIVISION
SECTION ONE



DIRECTOR OF PLANNING AND GROWTH MANAGEMENTS CERTIFICATE

STATE OF ILLINOIS)
COUNTY OF PEORIA)

I, hereby certify that this plat of Rollingbrook Subdivision is substantially in accordance with the approved preliminary plat and is approved this 11th day of January, 2014.

[Signature]
Director of Planning and Growth Management

DIRECTOR OF PLANNING AND GROWTH MANAGEMENTS CERTIFICATE

STATE OF ILLINOIS)
COUNTY OF PEORIA)

I, the undersigned, a duly qualified surveyor in and for the said County in the State of Illinois, do hereby certify that the Rollingbrook Subdivision is a true and correct survey of the land shown on the plat and that the same is in accordance with the approved preliminary plat and is approved this 11th day of January, 2014.

[Signature]
Surveyor

DIRECTOR OF PLANNING AND GROWTH MANAGEMENTS CERTIFICATE

STATE OF ILLINOIS)
COUNTY OF PEORIA)

I, hereby certify that I, the undersigned, a duly qualified surveyor in and for the said County in the State of Illinois, do hereby certify that the Rollingbrook Subdivision is a true and correct survey of the land shown on the plat and that the same is in accordance with the approved preliminary plat and is approved this 11th day of January, 2014.

[Signature]
Surveyor

STATE OF ILLINOIS)
COUNTY OF PEORIA)
I, the undersigned, a duly qualified surveyor in and for the said County in the State of Illinois, do hereby certify that the Rollingbrook Subdivision is a true and correct survey of the land shown on the plat and that the same is in accordance with the approved preliminary plat and is approved this 11th day of January, 2014.

DIRECTOR OF PLANNING AND GROWTH MANAGEMENTS CERTIFICATE
STATE OF ILLINOIS)
COUNTY OF PEORIA)
I, hereby certify that this plat of Rollingbrook Subdivision is substantially in accordance with the approved preliminary plat and is approved this 11th day of January, 2014.

DIRECTOR OF PLANNING AND GROWTH MANAGEMENTS CERTIFICATE

STATE OF ILLINOIS)
COUNTY OF PEORIA)
I, hereby certify that this plat of Rollingbrook Subdivision is substantially in accordance with the approved preliminary plat and is approved this 11th day of January, 2014.

[Signature]
Director of Planning and Growth Management



By *[Signature]*
Surveyor

The professional service conforms to the current Illinois Standards for a Boundary Survey.

NOTES

1. A 3/4"=1'-0" planimeter scale, with a set of each lot corner and of each location where a lot line changes. Section after lot closing has been completed.
2. Dimensions shown along curved lot lines are solid unless noted otherwise.
3. Property owners may not participate in the City of Peoria's Drainage Assessment Program.
4. Lot lines extending from curved lot lines are solid unless noted otherwise.
5. The east-west portion of Rollingbrook Court is designed as a temporary easement from Allen Road and is not intended to remain. According to the current 2011 drainage, this portion will become a public easement of the City of Peoria. The easement will be shown on the plat and will be subject to the City of Peoria's Drainage Assessment Program. The easement will be shown on the plat and will be subject to the City of Peoria's Drainage Assessment Program.
6. Lot 78 through 81 are shown here and are not independently located.

DIRECTOR OF PLANNING AND GROWTH MANAGEMENTS CERTIFICATE
STATE OF ILLINOIS)
COUNTY OF PEORIA)

I, the undersigned, a duly qualified surveyor in and for the said County in the State of Illinois, do hereby certify that the Rollingbrook Subdivision is a true and correct survey of the land shown on the plat and that the same is in accordance with the approved preliminary plat and is approved this 11th day of January, 2014.

[Signature]
Surveyor

STATE OF ILLINOIS)
COUNTY OF PEORIA)
I, the undersigned, a duly qualified surveyor in and for the said County in the State of Illinois, do hereby certify that the Rollingbrook Subdivision is a true and correct survey of the land shown on the plat and that the same is in accordance with the approved preliminary plat and is approved this 11th day of January, 2014.

[Signature]
Surveyor

STATE OF ILLINOIS)
COUNTY OF PEORIA)
I, the undersigned, a duly qualified surveyor in and for the said County in the State of Illinois, do hereby certify that the Rollingbrook Subdivision is a true and correct survey of the land shown on the plat and that the same is in accordance with the approved preliminary plat and is approved this 11th day of January, 2014.

[Signature]
Surveyor

Farnsworth GROUP	
7707 N. INDIAN AVENUE SUITE 200 PEORIA, ILLINOIS 61614 (309) 699-0000 / (309) 699-0000 Fax www.farnsworth.com	
Drawn	DATE
Designed	Checked

ROLLINGBROOK SUBDIVISION SECTION THREE PEORIA, ILLINOIS	
FINAL PLAT	
Book No.	Page No.
1046630	1 of 1