

**PLANNING AND GROWTH MANAGEMENT**



March 11, 2004

Roger John  
Peoria Housing Authority  
100 S. Richard Pryor Place  
Peoria, IL 61605

Farnsworth Group, Inc.  
7707 N. Knoxville Ave., Ste. 200  
Peoria, IL 61614

Interested Parties

RE: Case No. CPC 04-A – RiverWest South Subdivision

Please be advised that on Tuesday, March 2, 2004, the City Council approved the following request:

**RECOMMENDATION TO APPROVE THE PRELIMINARY PLAT FOR RIVERWEST SOUTH SUBDIVISION, A RESIDENTIAL DEVELOPMENT BOUND BY BUTLER STREET ON THE NORTH, MACARTHUR HIGHWAY ON THE EAST, AND NEW STREET ON THE SOUTH. CPC 04-A [DISTRICT 1]**

This request was approved as outlined in the attached copies of the approved documents. If you have any questions, please contact me at 494-8667.

Sincerely,

A handwritten signature in cursive script that reads 'Leah Allison'.

Leah Allison  
Urban Planner

LA/ps

Enclosures

*Twin Towers Building  
456 Fulton Street, Suite 402  
Peoria, Illinois 61602  
309/494-8600  
FAX 309/494-8680*

# RESOLUTION NO. 04-072

CITY OF PEORIA.

Peoria, Illinois March 2 20 04

**RECOMMENDATION TO APPROVE THE PRELIMINARY PLAT FOR RIVERWEST SOUTH SUBDIVISION, A RESIDENTIAL DEVELOPMENT BOUND BY BUTLER STREET ON THE NORTH, MACARTHUR HIGHWAY ON THE EAST, AND NEW STREET ON THE SOUTH (CPC 04-A) [DISTRICT 1]**

WHEREAS, the City of Peoria has the authority to review subdivisions and developments within the limits of its corporate boundaries and within its mile and one half extra-territorial jurisdiction; and

WHEREAS, the City Planning Commission reviewed this request on February 18, 2004

NOW, THEREFORE, BE IT RESOLVED BY THE CITY COUNCIL OF THE CITY OF PEORIA, ILLINOIS:

Section 1. That the preliminary plat of Riverwest South Subdivision, a residential development bound by Butler Street on the north, MacArthur Highway on the east, and New Street on the south (Attachment A), generally described as a subdivision of lots 1,2,3,4,5,18,19,20, 21 and 22, in Block 15; all of Block 14; and lots 20, 21, and 22 in Block 10 in Phelps, Bourland, and McDougal's Addition to the City of Peoria. A subdivision being a part of the SE ¼ Section 8, T8N, R8E of the 4<sup>th</sup> Principal Meridian is hereby approved.

PASSED BY THE CITY COUNCIL OF THE CITY OF PEORIA, ILLINOIS THIS 2nd DAY OF March, 2004.

APPROVED:

Douglas P. Ransley  
Mayor

ATTEST:

Mary L. Haynes  
City Clerk

EXAMINED AND APPROVED

Randall R. Ruff  
Corporation Counsel

# RIVERWEST SOUTH SUBDIVISION - PRELIMINARY PLAT

## SOUTHEAST QUARTER OF SECTION 8 NORTH, RANGE 8 EAST, FOURTH PRINCIPAL MERIDIAN

### PEORIA COUNTY, ILLINOIS

RECEIVED AT THE CLERK'S OFFICE OF PEORIA COUNTY, ILLINOIS, JANUARY 11, 1991.

ALL OF THE LOTS IN THE SOUTH SUBDIVISION, SECTION 8 NORTH, RANGE 8 EAST, FOURTH PRINCIPAL MERIDIAN, PEORIA COUNTY, ILLINOIS, AS SHOWN ON THE PRELIMINARY PLAT, ARE SUBJECT TO THE FOLLOWING CONDITIONS:

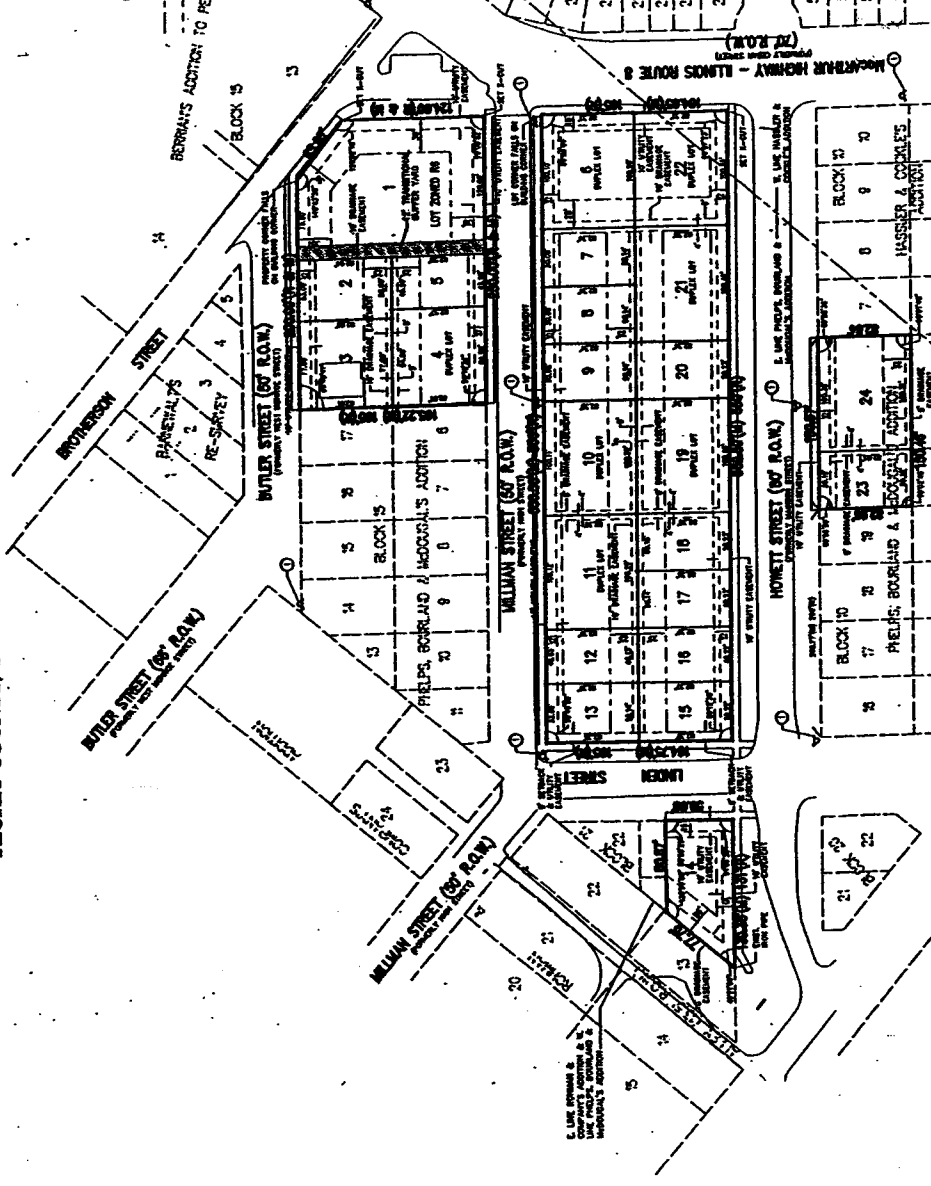
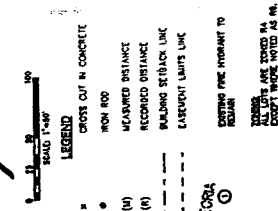
1. The lots in the South Subdivision, Section 8 North, Range 8 East, Fourth Principal Meridian, Peoria County, Illinois, are subject to the following conditions: (a) The lots are subject to the terms and conditions of the preliminary plat of the South Subdivision, Section 8 North, Range 8 East, Fourth Principal Meridian, Peoria County, Illinois, as shown on the preliminary plat. (b) The lots are subject to the terms and conditions of the preliminary plat of the South Subdivision, Section 8 North, Range 8 East, Fourth Principal Meridian, Peoria County, Illinois, as shown on the preliminary plat. (c) The lots are subject to the terms and conditions of the preliminary plat of the South Subdivision, Section 8 North, Range 8 East, Fourth Principal Meridian, Peoria County, Illinois, as shown on the preliminary plat.

2. The lots in the South Subdivision, Section 8 North, Range 8 East, Fourth Principal Meridian, Peoria County, Illinois, are subject to the following conditions: (a) The lots are subject to the terms and conditions of the preliminary plat of the South Subdivision, Section 8 North, Range 8 East, Fourth Principal Meridian, Peoria County, Illinois, as shown on the preliminary plat. (b) The lots are subject to the terms and conditions of the preliminary plat of the South Subdivision, Section 8 North, Range 8 East, Fourth Principal Meridian, Peoria County, Illinois, as shown on the preliminary plat. (c) The lots are subject to the terms and conditions of the preliminary plat of the South Subdivision, Section 8 North, Range 8 East, Fourth Principal Meridian, Peoria County, Illinois, as shown on the preliminary plat.

3. The lots in the South Subdivision, Section 8 North, Range 8 East, Fourth Principal Meridian, Peoria County, Illinois, are subject to the following conditions: (a) The lots are subject to the terms and conditions of the preliminary plat of the South Subdivision, Section 8 North, Range 8 East, Fourth Principal Meridian, Peoria County, Illinois, as shown on the preliminary plat. (b) The lots are subject to the terms and conditions of the preliminary plat of the South Subdivision, Section 8 North, Range 8 East, Fourth Principal Meridian, Peoria County, Illinois, as shown on the preliminary plat. (c) The lots are subject to the terms and conditions of the preliminary plat of the South Subdivision, Section 8 North, Range 8 East, Fourth Principal Meridian, Peoria County, Illinois, as shown on the preliminary plat.



PEORIA COUNTY, ILLINOIS  
JANUARY 11, 1991



THE CITY OF PEORIA, ILLINOIS, HAS REVIEWED THE PRELIMINARY PLAT OF THE SOUTH SUBDIVISION, SECTION 8 NORTH, RANGE 8 EAST, FOURTH PRINCIPAL MERIDIAN, PEORIA COUNTY, ILLINOIS, AND HAS DETERMINED THAT THE PLAT COMES WITHIN THE REQUIREMENTS OF THE CITY PLANNING COMMISSION. THE FINAL PLAT MUST BE SUBMITTED WITHIN ONE YEAR OF THE DATE OF THIS RESOLUTION.

PEORIA CITY PLANNING COMMISSION

PEORIA CITY PLANNING COMMISSION

PEORIA CITY PLANNING COMMISSION

PEORIA CITY PLANNING COMMISSION

PEORIA CITY PLANNING COMMISSION

PEORIA CITY PLANNING COMMISSION

PEORIA CITY PLANNING COMMISSION

PEORIA CITY PLANNING COMMISSION

#### PROPERTY IDENTIFICATION NUMBERS

1	2	3	4	5	6	7	8	9	10
11	12	13	14	15	16	17	18	19	20
21	22	23	24	25	26	27	28	29	30
31	32	33	34	35	36	37	38	39	40
41	42	43	44	45	46	47	48	49	50
51	52	53	54	55	56	57	58	59	60
61	62	63	64	65	66	67	68	69	70
71	72	73	74	75	76	77	78	79	80
81	82	83	84	85	86	87	88	89	90
91	92	93	94	95	96	97	98	99	100



Fainworth  
1000 N. UNIVERSITY AVE.  
PEORIA, ILLINOIS 61602  
(312) 686-1000

PRELIMINARY PLAT	2, 3, 4
PROPOSED CONDITIONS	2, 3, 4
RIVERWEST SOUTH SUBDIVISION	2, 3, 4
PEORIA, ILLINOIS	2, 3, 4

203867