



TO: Reviewing Agencies and Other Interested Parties

FROM: Leah Allison, AICP, Senior Urban Planner
Planning and Growth Management Department

DATE: June 16, 2006

SUBJECT: **PRELIMINARY PLAT OF VILLAS AT GRAND PRAIRIE LOT 2 –
CPC MAJOR 06-R**

Please see the next page for a copy of the **Preliminary Plat of Villas at Grand Prairie Lot 2**, a residential/office development located north of IL Route 6, south of Alta Road, along the west side of Route 91. The petitioner, RP Homes, LLC, is proposing 3 residential lots and 2 office lots on 84.43 acres.

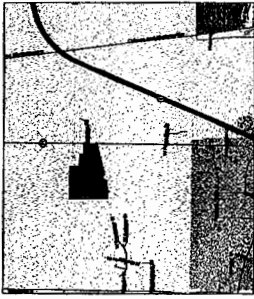
Please submit any comments or concerns relating to this case to the Planning and Growth Management Department no later than Friday, June 30, 2006.

Should you need more information, feel free to contact me at 494-8667.

LMA/ps

Attachment

cc: Council Member Nichting



LOCATION MAP



Legend

- 1. 10-15% SLOPE
- 2. 15-20% SLOPE
- 3. 20-25% SLOPE
- 4. 25-30% SLOPE
- 5. 30-35% SLOPE
- 6. 35-40% SLOPE
- 7. 40-45% SLOPE
- 8. 45-50% SLOPE
- 9. 50-55% SLOPE
- 10. 55-60% SLOPE
- 11. 60-65% SLOPE
- 12. 65-70% SLOPE
- 13. 70-75% SLOPE
- 14. 75-80% SLOPE
- 15. 80-85% SLOPE
- 16. 85-90% SLOPE
- 17. 90-95% SLOPE
- 18. 95-100% SLOPE
- 19. 100% SLOPE
- 20. 100% SLOPE

1. The project is located in the City of Grand Prairie, Texas, within the Grand Prairie Independent School District.
2. The project is located in the City of Grand Prairie, Texas, within the Grand Prairie Independent School District.
3. The project is located in the City of Grand Prairie, Texas, within the Grand Prairie Independent School District.
4. The project is located in the City of Grand Prairie, Texas, within the Grand Prairie Independent School District.
5. The project is located in the City of Grand Prairie, Texas, within the Grand Prairie Independent School District.
6. The project is located in the City of Grand Prairie, Texas, within the Grand Prairie Independent School District.
7. The project is located in the City of Grand Prairie, Texas, within the Grand Prairie Independent School District.
8. The project is located in the City of Grand Prairie, Texas, within the Grand Prairie Independent School District.
9. The project is located in the City of Grand Prairie, Texas, within the Grand Prairie Independent School District.
10. The project is located in the City of Grand Prairie, Texas, within the Grand Prairie Independent School District.
11. The project is located in the City of Grand Prairie, Texas, within the Grand Prairie Independent School District.
12. The project is located in the City of Grand Prairie, Texas, within the Grand Prairie Independent School District.
13. The project is located in the City of Grand Prairie, Texas, within the Grand Prairie Independent School District.
14. The project is located in the City of Grand Prairie, Texas, within the Grand Prairie Independent School District.
15. The project is located in the City of Grand Prairie, Texas, within the Grand Prairie Independent School District.
16. The project is located in the City of Grand Prairie, Texas, within the Grand Prairie Independent School District.
17. The project is located in the City of Grand Prairie, Texas, within the Grand Prairie Independent School District.
18. The project is located in the City of Grand Prairie, Texas, within the Grand Prairie Independent School District.
19. The project is located in the City of Grand Prairie, Texas, within the Grand Prairie Independent School District.
20. The project is located in the City of Grand Prairie, Texas, within the Grand Prairie Independent School District.

EXPLANATION

1. The project is located in the City of Grand Prairie, Texas, within the Grand Prairie Independent School District.



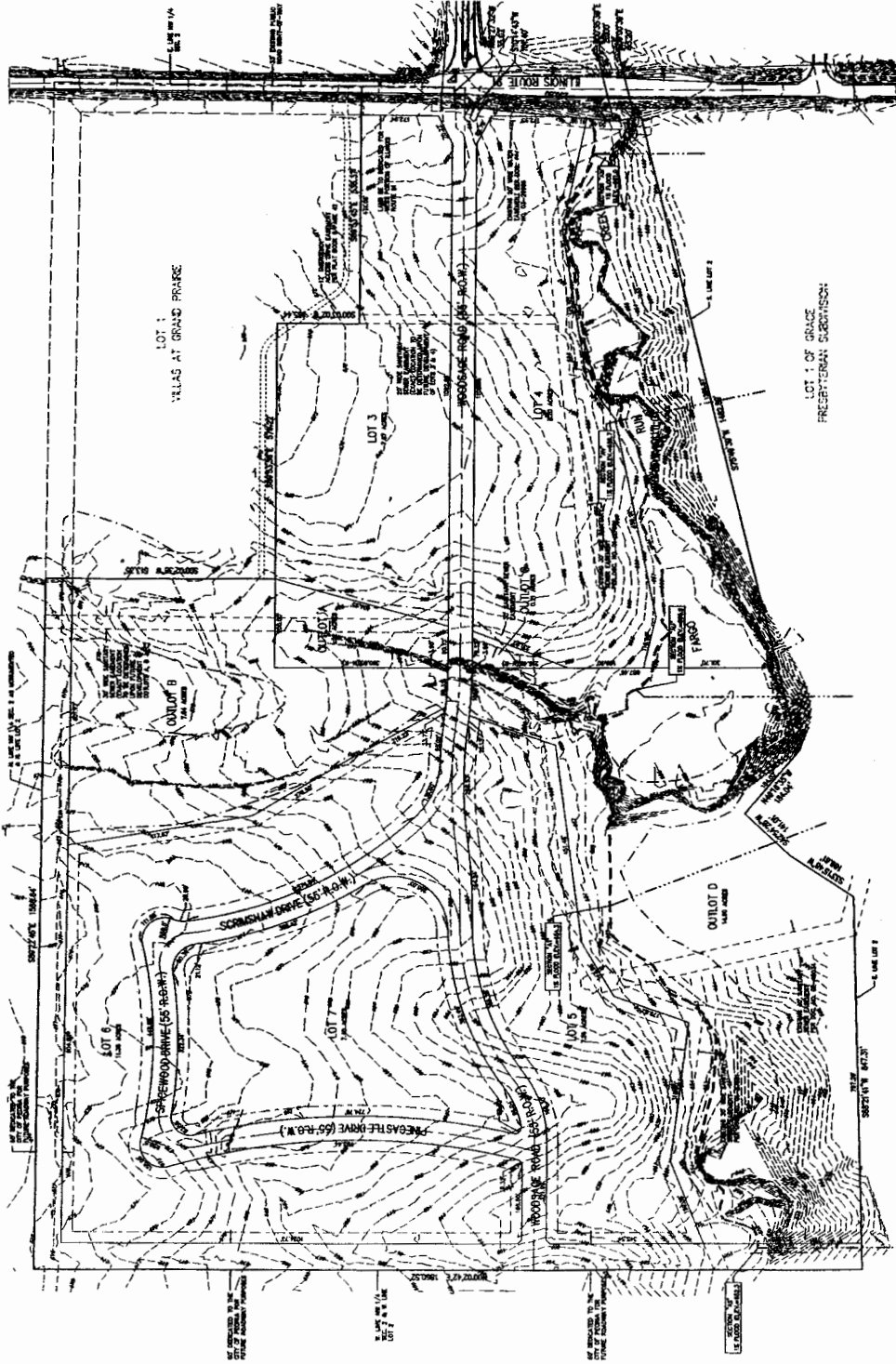
City of Grand Prairie, Texas
Grand Prairie Independent School District

EXPLANATION

1. The project is located in the City of Grand Prairie, Texas, within the Grand Prairie Independent School District.

EXPLANATION

1. The project is located in the City of Grand Prairie, Texas, within the Grand Prairie Independent School District.



| LOT 1 | LOT 2 |
|-------------------------|-------------------------|
| VILLAS AT GRAND PRAIRIE | VILLAS AT GRAND PRAIRIE |
| PRELIMINARY PLAT | PRELIMINARY PLAT |
| 10-15% SLOPE | 10-15% SLOPE |
| 15-20% SLOPE | 15-20% SLOPE |
| 20-25% SLOPE | 20-25% SLOPE |
| 25-30% SLOPE | 25-30% SLOPE |
| 30-35% SLOPE | 30-35% SLOPE |
| 35-40% SLOPE | 35-40% SLOPE |
| 40-45% SLOPE | 40-45% SLOPE |
| 45-50% SLOPE | 45-50% SLOPE |
| 50-55% SLOPE | 50-55% SLOPE |
| 55-60% SLOPE | 55-60% SLOPE |
| 60-65% SLOPE | 60-65% SLOPE |
| 65-70% SLOPE | 65-70% SLOPE |
| 70-75% SLOPE | 70-75% SLOPE |
| 75-80% SLOPE | 75-80% SLOPE |
| 80-85% SLOPE | 80-85% SLOPE |
| 85-90% SLOPE | 85-90% SLOPE |
| 90-95% SLOPE | 90-95% SLOPE |
| 95-100% SLOPE | 95-100% SLOPE |
| 100% SLOPE | 100% SLOPE |