

PLANNING AND GROWTH MANAGEMENT



TO: Reviewing Agencies
 Other Interested Parties

FROM: Leah Allison, AICP, Senior Urban Planner *LA*
 Planning and Growth Management Department

DATE: January 29, 2007

SUBJECT: **LIGHT HOUSE ACADEMY PRELIMINARY PLAT (CPC 07-C)**

Please see the next page for the site plan depicting the request for approval of a Preliminary Plat for Light House Academy, which is located west of Radnor Road, east of Route 91 along the north side of Alta Lane. The property is identified as Parcel Identification Number 08-26-400-004. The petitioner is proposing to subdivide 71.87 acres into 2 lots.

Please submit any comments or concerns relating to this case to the Planning and Growth Management Department no later than **Friday, February 9, 2007.**

Should you need more information, feel free to contact me at 494-8667.

LA/ps

Attachment

cc: Council Member Nichting

PAS\IP\PGM\Commissions\Planning Commission\CPC 07-C\CPC 07-C-REVIEWING AGENCIES & INTERESTED PARTIES.doc

**Twin Towers Building
456 Fulton Street, Suite 402
Peoria, Illinois 61602
309/494-8600
FAX 309/494-8680**

LEGAL DESCRIPTION

the study of the role of the family in the socialization process. The study was conducted in the United States and the results were compared with those of a similar study conducted in the United Kingdom. The study found that the family plays a significant role in the socialization process, particularly in the area of moral development. The study also found that the family's role in socialization is influenced by a number of factors, including the family's structure, the parents' education level, and the child's age. The study's findings have important implications for researchers and practitioners in the field of family studies.

[illegible]

STATE OF ALABAMA.

THIS INSTRUMENT HAS BEEN APPROVED IN ACCORDANCE WITH THE PROVISIONS OF THE PLAT ACT OF ALABAMA, TITLE 35, CHAPTER 30, OF THE ALABAMA CODE. IT IS IN CONFORMANCE WITH THE GOALS AND OBJECTIVES OF THE COUNTY LAND USE MANAGEMENT PLAN.

DATE OF RECORDING: 10/20/2011
 COUNTY OF FREEMAN

ALBANY COUNTY PLANT OFFICE

1. Write the numbers 1 through 10 in the boxes below.

ORDERED: Clerk / Court by Resolution No. _____ PASSED BY THE COUNCIL OF THE CITY OF
IN OKLAHOMA COUNTY ALTHOUGH AT A REGULAR MEETING HELD ON THE _____ DAY OF _____ A.D.

© 1999 by the International Board of Standards and Practices for Certified Financial Planners, Inc. (IBCFP). All rights reserved. This journal is the property of IBCFP. No part of this journal may be reproduced without the prior written permission of IBCFP.

CITIZENSHIP

(continued from page 10)

and will have full or near-full submission on the record by the fall. The bill is expected to be introduced in the House in the fall. The bill is expected to be introduced in the House in the fall. The bill is expected to be introduced in the House in the fall.

© 2000 Blackwell Science Ltd, *Journal of Internal Medicine* 247: 105–112

© 2006 The Authors
Journal compilation © 2006 Blackwell Publishing Ltd

STATE OF ALABAMA
COUNTY OF MOBILE

Dr. JAMES I. ANDERSON, JR., President, Anderson and Associates, Inc., is a member of the American Society of Mechanical Engineers, the American Society of Heating, Refrigerating and Air Conditioning Engineers, and the American Society of Professional Engineers. He is also a member of the American Society of Mechanical Engineers, the American Society of Heating, Refrigerating and Air Conditioning Engineers, and the American Society of Professional Engineers.

and One-way (1-10) Units (if the component units are incorporated on 100% of value) and Extraordinary (10-14) Subsequent Control. That the fact it is not within the "regulated" area must be an

Author's Address: Department of Psychology, University of California, San Diego, La Jolla, CA 92037, U.S.A.

© 2004 Blackwell Publishing Ltd *Journal of Internal Medicine* 255: 111–117

THE UNIVERSITY OF MICHIGAN

11/19/2016 10:00:00 AM

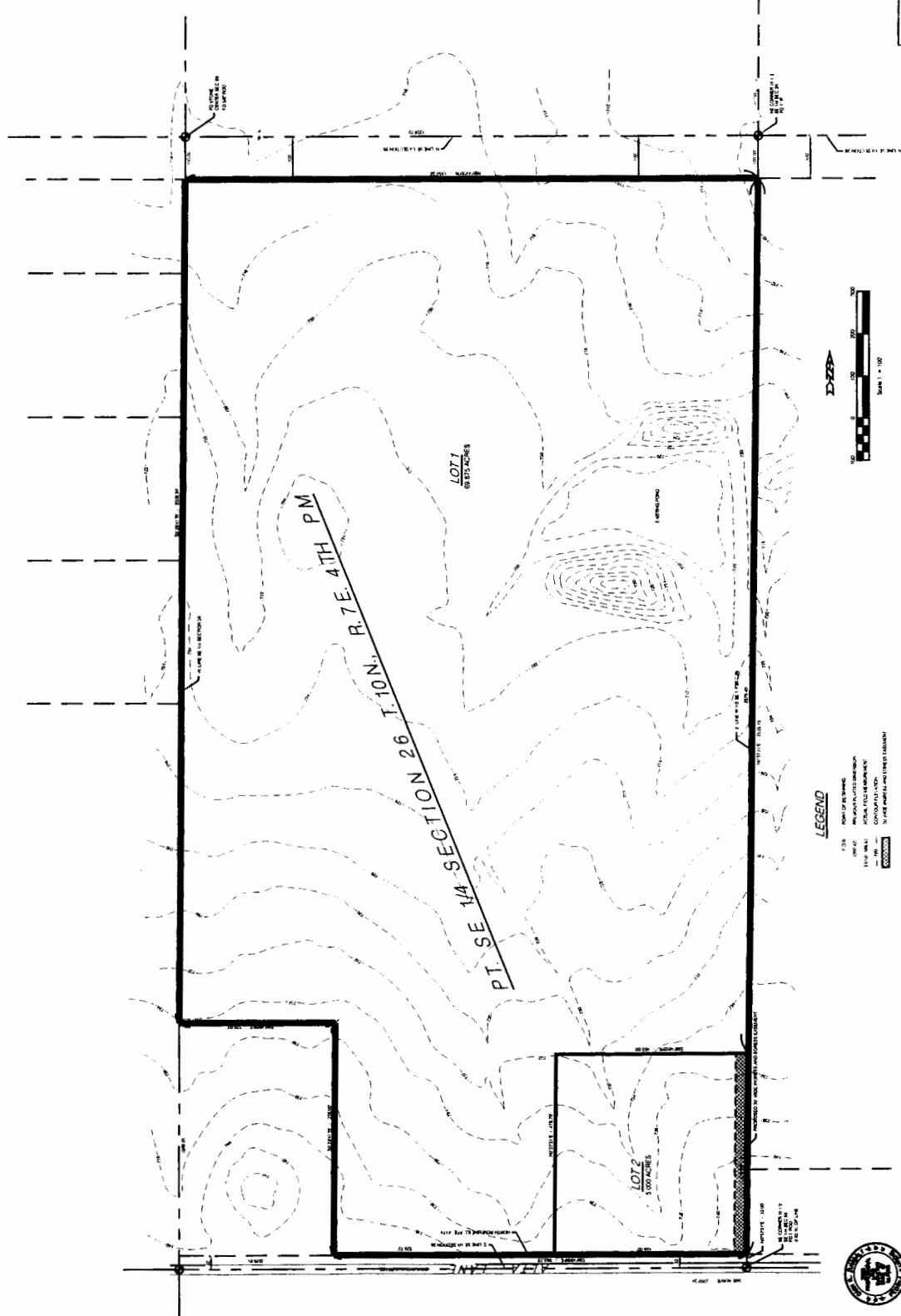
© 2004 Blackwell Publishing Ltd, *Journal of Internal Medicine* 255: 101–108

[5]

DATE	APPROVED
------	----------

One

Figure 1



LEGEND

- POINT OF BEGINNING
- MEASUREMENT OF DISTANCE
- ACTUAL FIELD MEASUREMENT
- CONTIGUOUS PLANTATION
- NO FENCE, ENCLOSURE AND CROSSING



NOTE: THE FULL LISTING OF CHARTS AND TABLES IS FOUND IN THE APPENDIX.

ZUMWALT & ASSOCIATES, INC.
PROFESSIONAL ENGINEERS-REGISTERED LAND SURVEYORS
1040 W. OLYMPIA DRIVE
MIAMI, ILLINOIS 61665-1091 FAX 815 9074
OFFICE PHONE REGISTRATION NO. 164-00119

DATE	DESCRIPTION	REVISIONS
01/11/2011	DOE	

APPROVED BY: CRZ
DATE: JANUARY 24, 2007
BY: [Signature]

PRELIMINARY PLAT

LIGHT HOUSE SUBDIVISION
PEORIA, ILLINOIS

1 of 1

