

**PLANNING AND GROWTH MANAGEMENT**



TO:           Reviewing Agencies  
              Other Interested Parties

FROM:       Leah Allison, Urban Planner *LA*  
              Planning and Growth Management Department

DATE:       January 29, 2004

SUBJECT:    **MULTI-FAMILY PLAN FOR WILLIAMSBURG OAKS TOWNHOUSES**  
              **CPC 03-P**

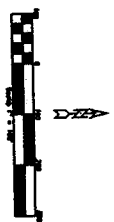
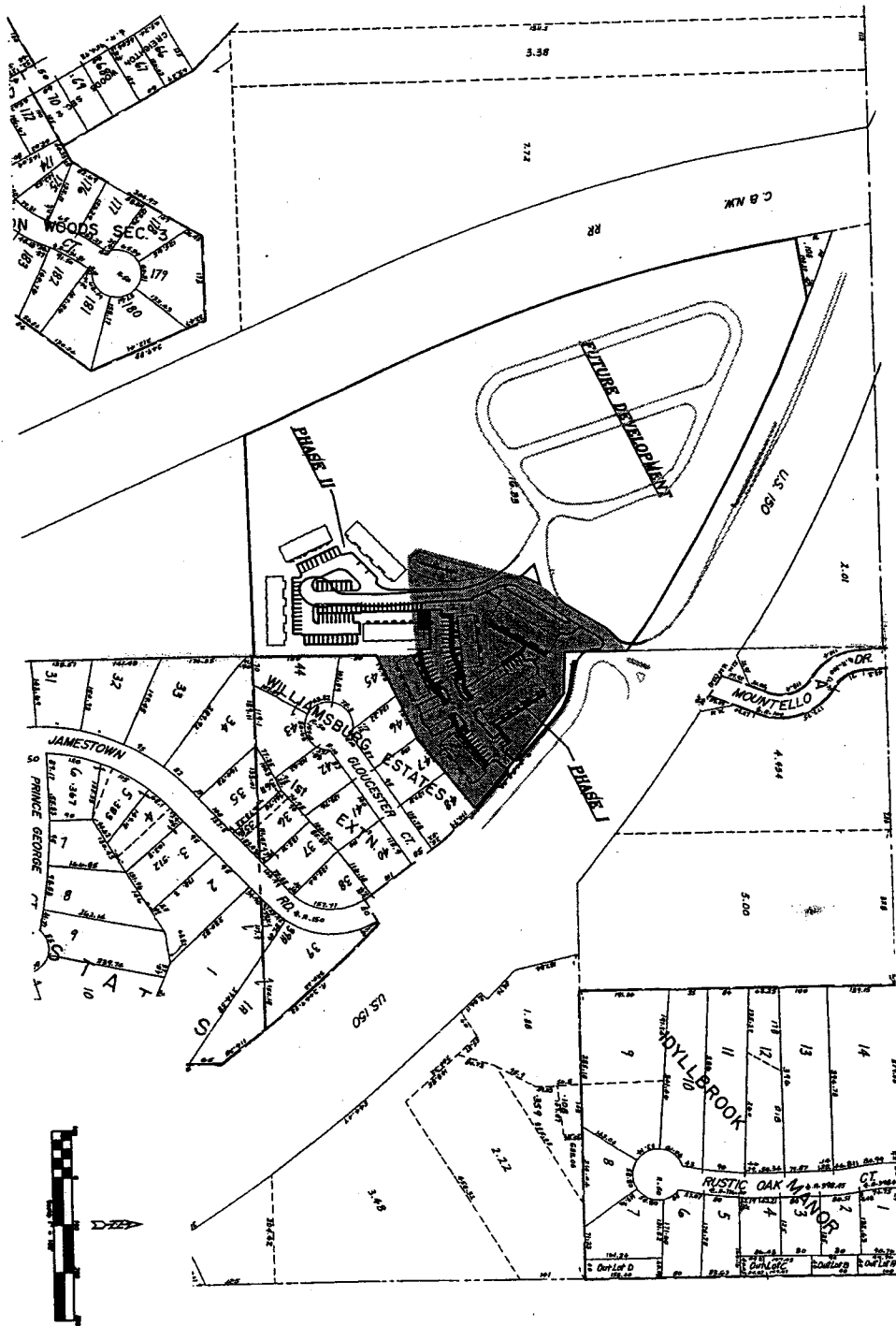
Please see the next page, a copy of the multi-family plan for Williamsburg Oaks Townhouses, a multi-family residential development located east of Big Hollow Road along the southern side of War Memorial Drive. The property address is 6529 N. War Memorial Drive. The developer is proposing 33 units on approximately 3.25 acres.

Please submit any comments or concerns relating to this case to the Planning and Growth Management Department no later than **Friday, February 6, 2004.**

Should you need more information, feel free to contact me at 494-8667.

LMA/ps

*Twin Towers Building  
456 Fulton Street, Suite 402  
Peoria, Illinois 61602  
309/494-8600  
FAX 309/494-8680*



DRAWN BY: CHL/2008  
 APPROVED BY: GHE  
 DATE: DECEMBER 23, 2008  
 SCALE: 1"=40'±



**ZUMWALT & ASSOCIATES, INC.**  
 PROFESSIONAL ARCHITECTS, ENGINEERS, PLANNERS  
 1000 N. GARDEN AVE.  
 PEORIA, ILLINOIS 61602-1000  
 PHONE: (309) 692-2000 FAX: (309) 692-2001  
 INTERNET: WWW.ZUMWALT-ASSOCIATES.COM

SITE LOCATION PLAN

DATE	BY	DATE
11/11/08	CHL	
11/11/08	CHL	
11/11/08	CHL	
11/11/08	CHL	
11/11/08	CHL	
11/11/08	CHL	
11/11/08	CHL	
11/11/08	CHL	
11/11/08	CHL	
11/11/08	CHL	

PROGRESS PRINT  
 PRELIMINARY  
 Not for Construction  
 Date: 11/11/08  
 LARSON & DARBY GROUP  
 ARCHITECTS ENGINEERS PLANNERS

**WILLIAMSBURG OAKS TOWNHOUSES**  
 FOR: PROSPECT ENTERPRISES L.L.C.  
 LOT 49, WILLIAMSBURG ESTATES  
 PEORIA, ILLINOIS



**LZT Associates, Inc.**  
**Larson & Darby Group**  
 Architects Engineers Planners  
 Peoria Office: 13150 Adams St., Suite 100 Peoria, IL 61604 Tel: (309) 692-1000 Fax: (309) 692-1001  
 Rockford Office: 13150 Adams St., Suite 100 Rockford, IL 61118 Tel: (815) 967-5350 Fax: (815) 967-5351