

PLANNING AND GROWTH MANAGEMENT



TO: Reviewing Agencies
Other Interested Parties

FROM: Leah Allison, Urban Planner 
Planning and Growth Management Department

DATE: June 21, 2004

SUBJECT: **PRELIMINARY/FINAL PLAN FOR GLEN/PERRY – CPC 04-N**

Please see the next page for a copy of the Preliminary/Final Plan of Glen/Perry, a single-family attached residential development located at 804 - 808 Glendale and 706 - 716 Wayne Street. The developer is proposing a .70-acre zoning lot with 5 single-family attached (duplex) buildings, totaling 10 dwelling units.

Please submit any comments or concerns relating to this case to the Planning and Growth Management Department no later than **Friday, June 25, 2004.**

Should you need more information, feel free to contact me at 494-8667.

LMA/ps

Enclosure



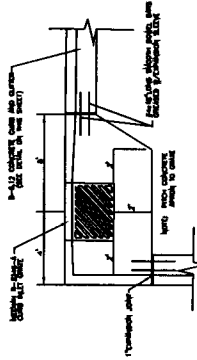
*Twin Towers Building
456 Fulton Street, Suite 402
Peoria, Illinois 61602
309/494-8600
FAX 309/494-8680*

[illegible]

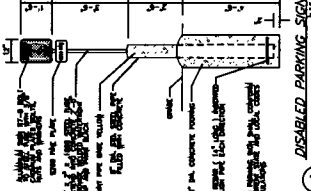
1 B-6.12 CONCRETE CURB AND GUTTER WITH TIE BARS N.J.S.
(PARENT TIE)



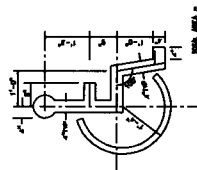
② B-6.12 CONCRETE CURB AND GUTTER WITH TIE BARS N.S.
(SECTION/PROJECT TIE)



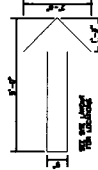
③ CORNER INLET APRON DETAIL



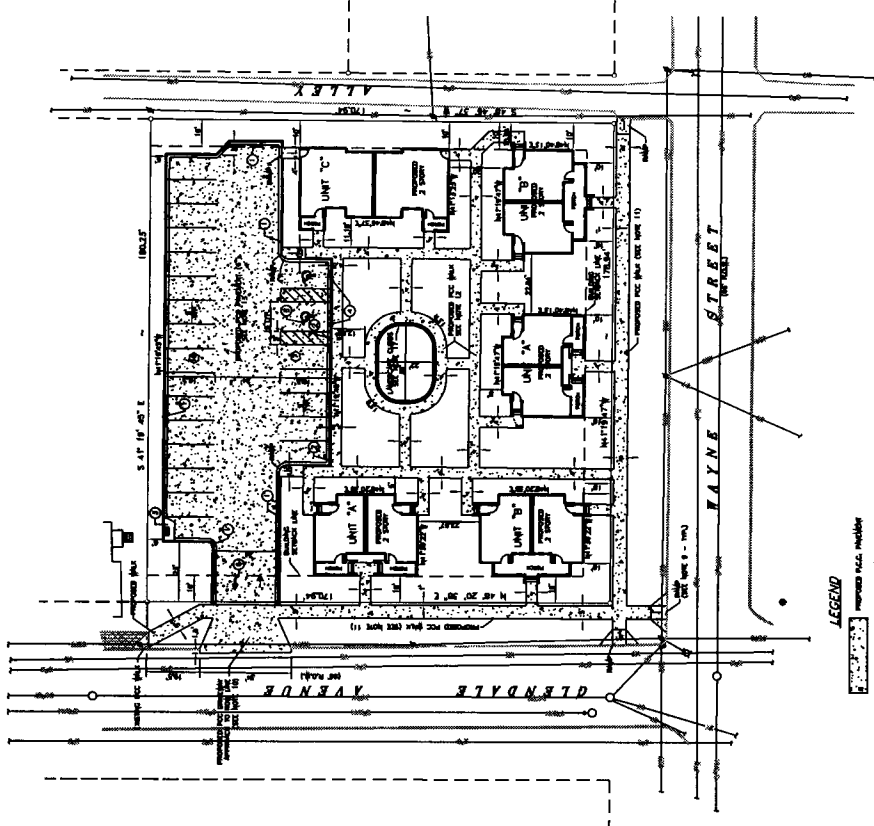
4 DISABLED PARKING SIGN ^{W-26}



5 DISABLED PARKING SYMBOL 475



⑥ DIRECTIONAL ARROW ^{4, 5, 6}



LEGEND

- [illegible]

Scale 1" = 20'

YWCA GLEN/PERRY
SUPPORTIVE HOUSING
PEORIA, IL

ZUMWALT & ASSOCIATES, INC.
PROFESSIONAL ENGINEERS • ARCHITECTS LAND SURVEYORS
1646 W. OLIVERA DRIVE
PHOENIX, ILLINOIS 61615 • (312) 682-6874
INDIAN FIELD REGISTRATION NO. 164-008188

Project No.	0011	Date	7/15/2003
-------------	------	------	-----------

C-2