

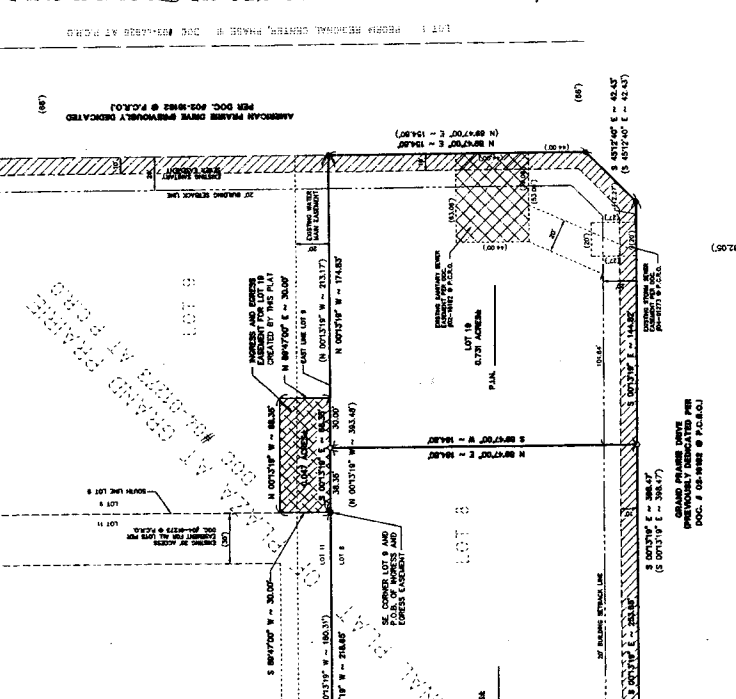
RESUBDIVISION OF LOT B AND PART OF LOT 9 FOR INGRESS & EGRESS PURPOSES OF PLAZA AT GRAND PRAIRIE (AS RECORDED IN DOCUMENT #04-01273 AT THE PEORIA COUNTY RECORDERS OFFICE), BEING A SUBDIVISION OF PART OF THE NORTHWEST QUARTER OF SECTION 11, TOWNSHIP-9-NORTH, RANGE-7-EAST OF THE FOURTH PRINCIPAL MERIDIAN, PEORIA COUNTY, ILLINOIS.

PART OF P.L.N. 13-11-151-008
 AREA = 1.801 ACRES

SECRET

(S)

SECRET

[illegible][illegible]


 CHARLES A. BRUN
 JUNIOR PROFESSIONAL LAND SURVEYOR 2020
 MY LICENSE EXPIRES: July 2025

[illegible]
