


PLANNING AND GROWTH MANAGEMENT DEPARTMENT

Memo

To: Bonnie D. Gavin, Township Assessor
Ken Andrejasich, Permit Engineer
Other Interested Parties
From: Leah Allison, AICP, Senior Urban Planner 
Date: February 9, 2007
Subject: **FINAL PLAT – PARKER SUBDIVISION (CPC MINOR 06-SS)**

Attached is the subject plat for your records. It has been approved.

LA/ps

Attachment

cc: Josh Naven

TAX I.D. # 18-19-400-003

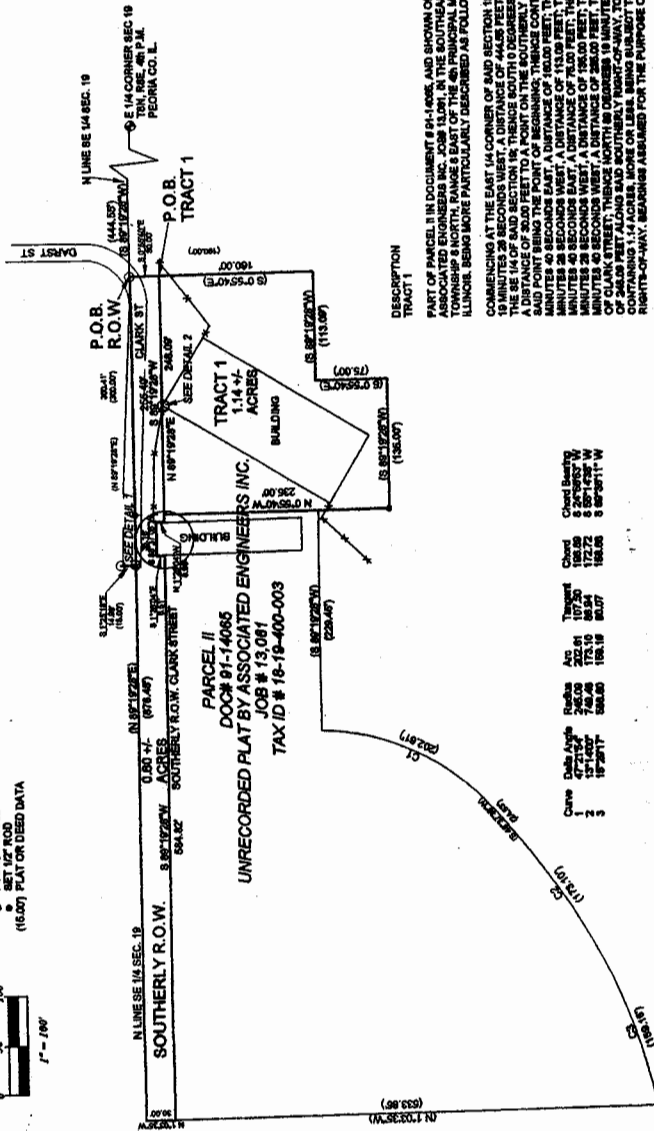
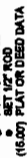
I HEREBY CERTIFY THAT THIS FINAL PLAN OF PARKER SUBDIVISION IS
APPROVED THIS 8 DAY OF January, 2007

Col. Robert M. Allison
DIRECTOR, PLANNING & GROWTH MANAGEMENT

FOR: JACK HOFFMAN

TITLE NOTE:
THIS OFFICE HAS NOT ABSTRACTED THIS PARCEL OR ANY CLAIMS OF TITLE EASEMENTS, OR RESTRICTIONS THAT MAY AFFECT THIS PARCEL. THE PRESENCE OR ABSENCE OF ANY SUCH CLAIMS ARE NOT CERTIFIED HEREON.

SURVEYOR NOTE:
SURVEYS ARE ASSUMED FOR THE PURPOSE OF DESCRIPTION ONLY. SEE ALSO TO ALL EXISTING EASEMENTS AND RIGHTS OF WAY.



CONSPICUOUS AT THE EAST (NORNER OF SECTION 19). THENCE SOUTH 90 DEGREES 19 MINUTES 28 SECONDS EAST, A DISTANCE OF 44.65 FEET ALONG THE NORTH LINE OF THE SE 1/4 OF SAID SECTION 19, THENCE SOUTH 10 DEGREES 15 MINUTES 40 SECONDS EAST, A DISTANCE OF 10.00 FEET TO THE POINT OF BEGINNING, THENCE CONTINUING SOUTH 10 DEGREES 15 MINUTES 40 SECONDS EAST, A DISTANCE OF 16.00 FEET, THENCE SOUTH 10 DEGREES 15 MINUTES 40 SECONDS EAST, A DISTANCE OF 73.00 FEET, THENCE SOUTH 10 DEGREES 15 MINUTES 28 SECONDS WEST, A DISTANCE OF 16.00 FEET, THENCE SOUTH 10 DEGREES 15 MINUTES 40 SECONDS WEST, A DISTANCE OF 16.00 FEET TO THE POINT OF BEGINNING, THENCE 1/4 CORNER OF SAID SECTION 19 AND SOUTHERLY 89 DEGREES 14 MINUTES 30 SECONDS WEST, A DISTANCE OF 1.14 ALONG, MORE OR LESS, BEING A RIGHT-ANGLE DISTORTION ONLY, CONTAINING 1.14 ACRES, MORE OR LESS, BEING A RIGHT-ANGLE DISTORTION ONLY.

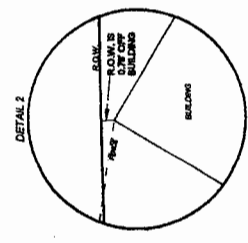
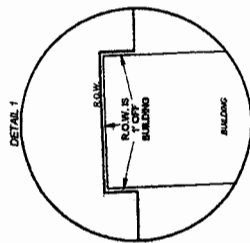
COMMENCING AT THE EAST QUARTER CORNER OF SECTION 18, THENCE SOUTH 60 DEGREES 15' TO THE POINT OF BEGINNING; THENCE SOUTH 90 DEGREES 25 MINUTES 45 SECONDS WEST, A DISTANCE OF 26.00 FEET; THENCE SOUTH 90 DEGREES 25 MINUTES 45 SECONDS WEST, A DISTANCE OF 356.47 FEET; THENCE NORTH 1 DEGREE 28 MINUTES 57 SECONDS EAST, A DISTANCE OF 35.00 FEET; THENCE NORTH 1 DEGREE 28 MINUTES 57 SECONDS EAST, A DISTANCE OF 35.00 FEET; THENCE SOUTH 1 DEGREE 28 MINUTES 57 SECONDS WEST, A DISTANCE OF 35.00 FEET; THENCE SOUTH 1 DEGREE 28 MINUTES 57 SECONDS WEST, A DISTANCE OF 35.00 FEET; THENCE SOUTH 89 DEGREES 19 MINUTES 26 SECONDS WEST, A DISTANCE OF 200.00 FEET; THENCE SOUTH 89 DEGREES 19 MINUTES 26 SECONDS WEST, A DISTANCE OF 200.00 FEET; THENCE NORTH 89 DEGREES 19 MINUTES 26 SECONDS EAST, A DISTANCE OF 200.00 FEET TO THE POINT OF BEGINNING, AND DESCRIBED SOUTHWESTLY FRONT-OF-WAY OF CLANK STREET CONTAINING C&D ACRE, MORE OR LESS, HEREIN SUBJECT TO ALL EASEMENTS AND ENCUMBRANCES.

STATE OF ILLINOIS } SS Filed for record
County of Peoria } in the office of
HENRY E. HORTON, County Recorder, on
JAN 08 2001 at 10 53 A. and recorded in
Plat Book 44 Page 124 Doc. No. 001-
Shirley J. [Signature]
Shirley J. [Signature]

RYEGRASS FOR ALL

THE ALBERTA LAND SURVEYORS ASSOCIATION, A PROFESSIONAL LAND SURVEYORS' ASSOCIATION, CERTIFIES THAT WE HAVE PREPARED THIS PLAT AS SHOWN HEREON, AND HAVE SURVEYED THE WEST LINE OF TRACT 1, TEN, 40 P.M. PERIA COUNTY, ALBERTA, IN THE SOUTHEAST QUARTER OF SECTION 19, T8N, R10W, 40 P.M. PERIA COUNTY, ALBERTA, AND THE EXCLUSIVE USE OF JACK HORN, TRACT 1, TEN, 40 P.M. PERIA COUNTY, ALBERTA, IN THE SOUTHEAST QUARTER OF SECTION 19, T8N, R10W, 40 P.M. PERIA COUNTY, ALBERTA, AS SHOWN ON COMMUNITY PANEL T808N 020W 40P.M. PERIA COUNTY, ALBERTA, 1, 180 OF THE FEDERAL INSURANCE RATE MAP PREPARED BY THE FEDERAL EMERGENCY MANAGEMENT AGENCY, IN ADDITION WE CERTIFY THAT LAND SHOWN HEREON DOES LIE WITHIN THE CITY OF PERIA, THOSE PROFESSIONAL LAND SURVEYORS WHOSE NAMES ARE LISTED HEREON ARE THE ONLY PROFESSIONAL LAND SURVEYORS WHOSE NAMES ARE LISTED HEREON.

DATED THIS 17 DAY OF Dec 2008.
 A.I. DOWNING INC.
 BY: 
 BY: 
 BY: 
 BY: 
 BY: 
 BY: 



TITLE NOTE:
THIS OFFICE HAS NOT ABSTRACTED THIS PARCEL OR ANY CLAIMS OF TITLE EASEMENTS, OR RESTRICTIONS THAT MAY AFFECT THIS PARCEL. THE PRESENCE OR ABSENCE OF ANY SUCH CLAIMS ARE NOT CERTIFIED HEREON.

SURVEYOR NOTE:
SURVEYS ARE ASSUMED FOR THE PURPOSE OF DESCRIPTION ONLY. REFERENCE TO ALL EXISTING EASEMENTS AND RIGHTS OF WAY.