

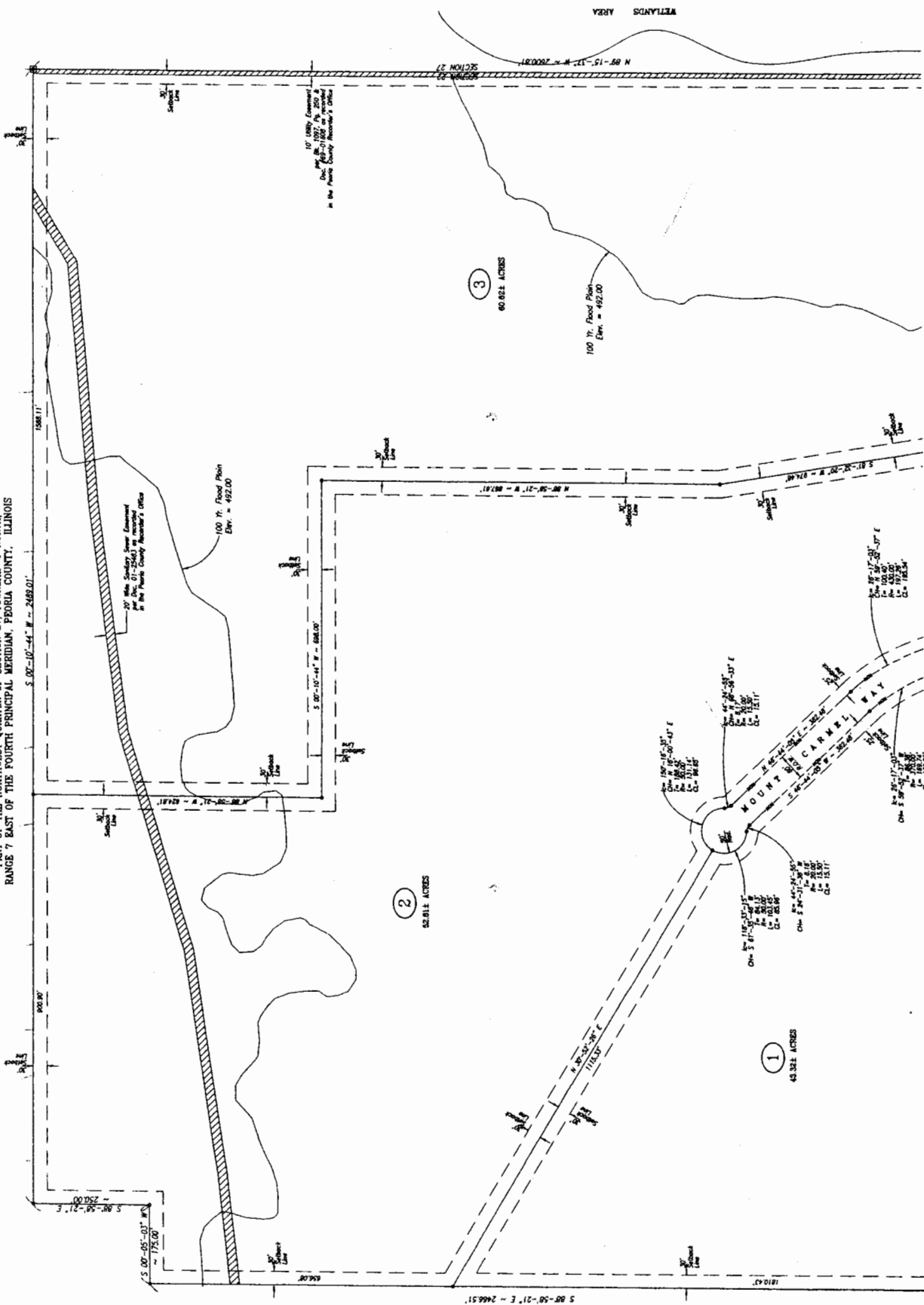
A PART OF THE SOUTHWEST QUARTER OF SECTION 22, AND A PART OF THE NORTHWEST QUARTER OF SECTION 27, TOWNSHIP 9 NORTH, RANGE 7 EAST OF THE FOURTH PRINCIPAL MERIDIAN, PEORIA COUNTY, ILLINOIS



A PART OF THE SOUTHWEST QUARTER OF SECTION 22, AND A PART OF THE NORTHWEST QUARTER OF SECTION 27, TOWNSHIP 9 NORTH, RANGE 7 EAST OF THE FOURTH PRINCIPAL MERIDIAN, PEORIA COUNTY, ILLINOIS



Scale: 1"=100'



Kate Smart
Mount Carmel Subdivision
Peoria, Illinois

FINAL PLAT

Consulting, Inc.
Land
Consulting
Engineers Surveyors
2320 E. Main, East Aurora, IL 61631
Tel. 309-699-2600 Fax. 309-699-2601

Certified by
 NAME
 Signed by
 OF HUSBAND/WIFE

Approved By: DLH
Date: FEBRUARY 2005

Project No.
004.005
Drawing 2 of 3

