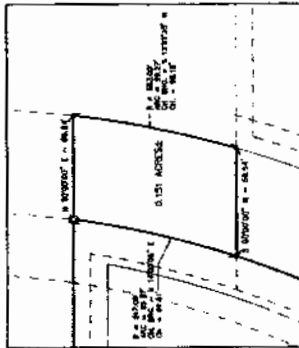
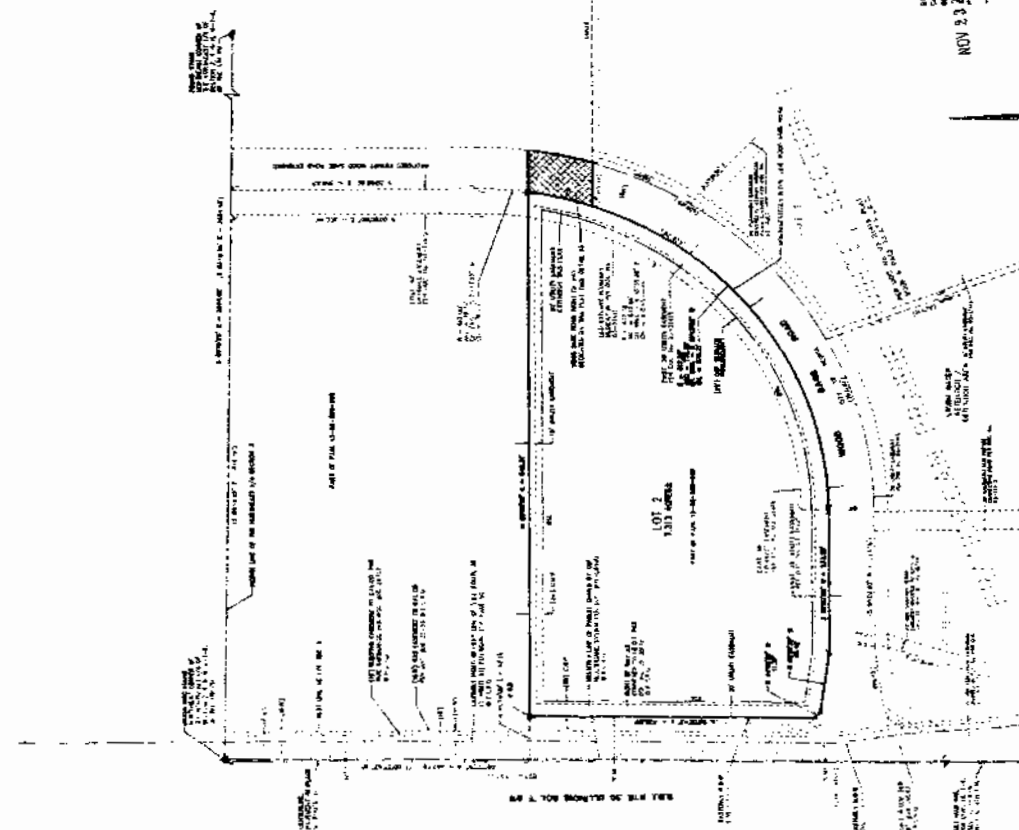


FINAL PLAT OF FRANCISCAN PRAIRIE POINTE, SECTION II  
A PART OF THE NORTHEAST QUARTER OF SECTION 2, TOWNSHIP-9-NORTH, RANGE-7-EAST OF THE FOURTH PRINCIPAL MERIDIAN,  
PEORIA COUNTY, ILLINOIS.

PART OF P.L.N. 13-02-200-005



DETAIL A  
SCALE: 1" = 40'

SET PLANNING DESIGN CERTIFICATE

STATE OF ILLINOIS

PEORIA COUNTY, ILLINOIS  
TOWNSHIP-9-NORTH, RANGE-7-EAST OF THE FOURTH PRINCIPAL MERIDIAN,  
PEORIA COUNTY, ILLINOIS

THIS PLAT IS SUBMITTED FOR RECORDING BY  
DATE OF RECORDING: 11/13/2008  
BY: [Signature]

NOTES

1. THE TOTAL AREA OF THE PLAT IS 1.000 ACRES.
2. THE TOTAL AREA OF THE PLAT IS 1.000 ACRES.
3. THE TOTAL AREA OF THE PLAT IS 1.000 ACRES.
4. THE TOTAL AREA OF THE PLAT IS 1.000 ACRES.
5. THE TOTAL AREA OF THE PLAT IS 1.000 ACRES.
6. THE TOTAL AREA OF THE PLAT IS 1.000 ACRES.
7. THE TOTAL AREA OF THE PLAT IS 1.000 ACRES.
8. THE TOTAL AREA OF THE PLAT IS 1.000 ACRES.
9. THE TOTAL AREA OF THE PLAT IS 1.000 ACRES.
10. THE TOTAL AREA OF THE PLAT IS 1.000 ACRES.

05-39208

NOV 23

RECORDED  
NOV 23 2008  
PEORIA COUNTY, ILLINOIS



LEGEND

- 1. TOTAL AREA: 1.000 ACRES
- 2. TOTAL AREA: 1.000 ACRES
- 3. TOTAL AREA: 1.000 ACRES
- 4. TOTAL AREA: 1.000 ACRES
- 5. TOTAL AREA: 1.000 ACRES
- 6. TOTAL AREA: 1.000 ACRES
- 7. TOTAL AREA: 1.000 ACRES
- 8. TOTAL AREA: 1.000 ACRES
- 9. TOTAL AREA: 1.000 ACRES
- 10. TOTAL AREA: 1.000 ACRES

PEORIA COUNTY, ILLINOIS

13

STATE OF ILLINOIS  
PEORIA COUNTY, ILLINOIS  
TOWNSHIP-9-NORTH, RANGE-7-EAST OF THE FOURTH PRINCIPAL MERIDIAN,  
PEORIA COUNTY, ILLINOIS

THIS PLAT IS SUBMITTED FOR RECORDING BY  
DATE OF RECORDING: 11/13/2008  
BY: [Signature]

STATE OF ILLINOIS  
PEORIA COUNTY, ILLINOIS  
TOWNSHIP-9-NORTH, RANGE-7-EAST OF THE FOURTH PRINCIPAL MERIDIAN,  
PEORIA COUNTY, ILLINOIS

STATE OF ILLINOIS  
PEORIA COUNTY, ILLINOIS  
TOWNSHIP-9-NORTH, RANGE-7-EAST OF THE FOURTH PRINCIPAL MERIDIAN,  
PEORIA COUNTY, ILLINOIS

STATE OF ILLINOIS  
PEORIA COUNTY, ILLINOIS  
TOWNSHIP-9-NORTH, RANGE-7-EAST OF THE FOURTH PRINCIPAL MERIDIAN,  
PEORIA COUNTY, ILLINOIS

STATE OF ILLINOIS  
PEORIA COUNTY, ILLINOIS  
TOWNSHIP-9-NORTH, RANGE-7-EAST OF THE FOURTH PRINCIPAL MERIDIAN,  
PEORIA COUNTY, ILLINOIS

STATE OF ILLINOIS  
PEORIA COUNTY, ILLINOIS  
TOWNSHIP-9-NORTH, RANGE-7-EAST OF THE FOURTH PRINCIPAL MERIDIAN,  
PEORIA COUNTY, ILLINOIS

STATE OF ILLINOIS  
PEORIA COUNTY, ILLINOIS  
TOWNSHIP-9-NORTH, RANGE-7-EAST OF THE FOURTH PRINCIPAL MERIDIAN,  
PEORIA COUNTY, ILLINOIS

STATE OF ILLINOIS  
PEORIA COUNTY, ILLINOIS  
TOWNSHIP-9-NORTH, RANGE-7-EAST OF THE FOURTH PRINCIPAL MERIDIAN,  
PEORIA COUNTY, ILLINOIS



FINAL PLAT OF  
FRANCISCAN PRAIRIE  
POINTE, SECTION II  
PART OF THE NORTHEAST QUARTER  
OF SECTION 2, TOWNSHIP-9-NORTH,  
RANGE-7-EAST OF THE FOURTH  
PRINCIPAL MERIDIAN, PEORIA COUNTY,  
ILLINOIS.  
SHEET 1  
UP 1