



March 11, 2005

P.M.A., L.L.C.
919 Detroit Court
Morton, IL 61550

RE: Case No. CPC 05-D

Please be advised that on Tuesday, March 1, 2005, the City Council approved the following request for:

RECOMMENDATION FOR APPROVAL OF THE PRELIMINARY PLAN FOR COLONY WOODS SUBDIVISION, A MULTI-FAMILY RESIDENTIAL DEVELOPMENT LOCATED SOUTH OF RICHWOODS BOULEVARD, NORTH OF W. FORREST HILL AVENUE, WEST OF MOLLECK DRIVE, OFF OF DORCHESTER RIDGE. CPC 05-D [DISTRICT 4]

This request was approved as outlined in the attached copies of the approved documents. If you have any questions, please contact me at 494-8667.

Sincerely,

A handwritten signature in cursive script that reads 'Leah Allison'.

Leah Allison, AICP
Urban Planner

LA/ps

Attachments



Peoria, Illinois March 1, 2005

A RESOLUTION APPROVING THE PRELIMINARY PLAN OF COLONY WOODS SUBDIVISION, A MULTI-FAMILY RESIDENTIAL DEVELOPMENT LOCATED SOUTH OF RICHWOODS BOULEVARD, NORTH OF W. FORREST HILL AVENUE, WEST OF MOLLECK DRIVE, OFF OF DORCHESTER RIDGE.

WHEREAS, the City of Peoria has the authority to review subdivisions and developments within the limits of its corporate boundaries and within its mile and one half extra-territorial jurisdiction; and

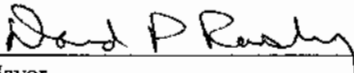
WHEREAS, the City Planning Commission reviewed this request on February 16, 2005,

NOW, THEREFORE, BE IT RESOLVED BY THE CITY COUNCIL OF THE CITY OF PEORIA, ILLINOIS:

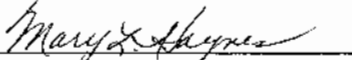
Section 1. That the preliminary plan of Colony Woods Subdivision, a multi-family residential development located south of Richwoods Boulevard, north of W. Forrest Hill Avenue, west of Molleck Drive, off of Dorchester Ridge (Attachment A), generally described as a subdivision of part of the SW ¼ of the SE ¼ of Section 25, T9N, R7E of the 4th Principal Meridian is hereby approved.

PASSED BY THE CITY COUNCIL OF THE CITY OF PEORIA, ILLINOIS THIS 1ST DAY OF MARCH, 2005.

APPROVED:

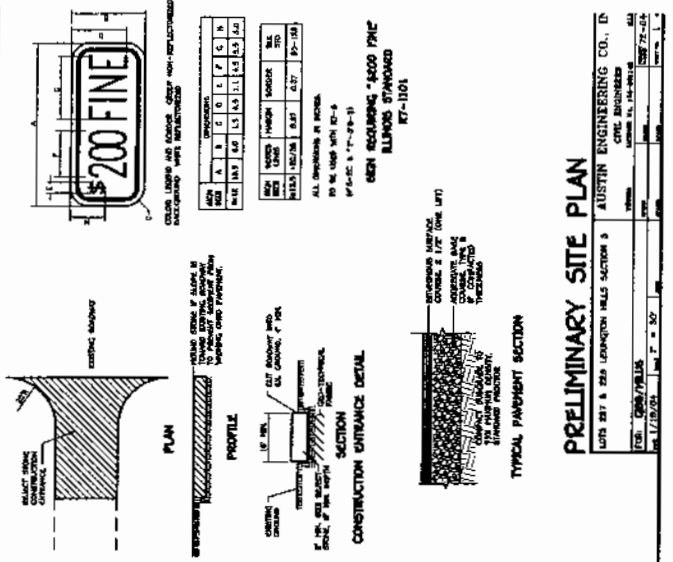
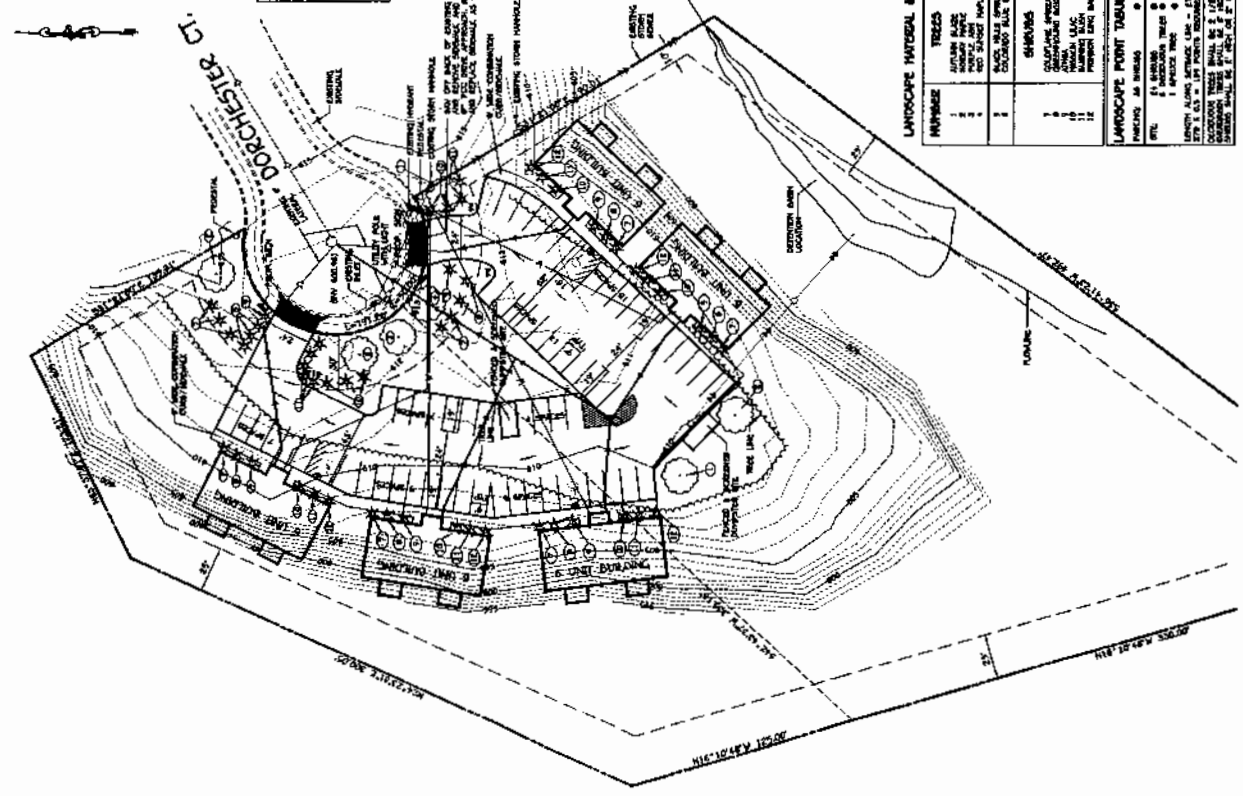

Mayor

ATTEST:


City Clerk

EXAMINED AND APPROVED


Corporation Counsel

[illegible]

LANDSCAPE MATERIAL & POINT TABLE			
NUMBER	TREES	POINTS	
1	SHRUBS	15	
2	SHRUBS		
3	SHRUBS		
4	SHRUBS		
5	SHRUBS		
6	SHRUBS		
7	SHRUBS		
8	SHRUBS		
9	SHRUBS		
10	SHRUBS		
11	SHRUBS		
12	SHRUBS		
13	SHRUBS		
14	SHRUBS		
15	SHRUBS		
16	SHRUBS		
17	SHRUBS		
18	SHRUBS		
19	SHRUBS		
20	SHRUBS		
21	SHRUBS		
22	SHRUBS		
23	SHRUBS		
24	SHRUBS		
25	SHRUBS		
26	SHRUBS		
27	SHRUBS		
28	SHRUBS		
29	SHRUBS		
30	SHRUBS		
31	SHRUBS		
32	SHRUBS		
33	SHRUBS		
34	SHRUBS		
35	SHRUBS		
36	SHRUBS		
37	SHRUBS		
38	SHRUBS		
39	SHRUBS		
40	SHRUBS		
41	SHRUBS		
42	SHRUBS		
43	SHRUBS		
44	SHRUBS		
45	SHRUBS		
46	SHRUBS		
47	SHRUBS		
48	SHRUBS		
49	SHRUBS		
50	SHRUBS		
51	SHRUBS		
52	SHRUBS		
53	SHRUBS		
54	SHRUBS		
55	SHRUBS		
56	SHRUBS		
57	SHRUBS		
58	SHRUBS		
59	SHRUBS		
60	SHRUBS		
61	SHRUBS		
62	SHRUBS		
63	SHRUBS		
64	SHRUBS		
65	SHRUBS		
66	SHRUBS		
67	SHRUBS		
68	SHRUBS		
69	SHRUBS		
70	SHRUBS		
71	SHRUBS		
72	SHRUBS		
73	SHRUBS		
74	SHRUBS		
75	SHRUBS		
76	SHRUBS		
77	SHRUBS		
78	SHRUBS		
79	SHRUBS		
80	SHRUBS		
81	SHRUBS		
82	SHRUBS		
83	SHRUBS		
84	SHRUBS		
85	SHRUBS		
86	SHRUBS		
87	SHRUBS		
88	SHRUBS		
89	SHRUBS		
90	SHRUBS		
91	SHRUBS		
92	SHRUBS		
93	SHRUBS		
94	SHRUBS		
95	SHRUBS		
96	SHRUBS		
97	SHRUBS		
98	SHRUBS		
99	SHRUBS		
100	SHRUBS		