



TO: Reviewing Agencies
Other Interested Parties

FROM: Leah Allison, Urban Planner *LA*
Planning and Growth Management Department

DATE: May 26, 2004

SUBJECT: **ANNEXATION PETITION, ANNEXATION AGREEMENT AND SITE PLAN –
CPC 04-K**

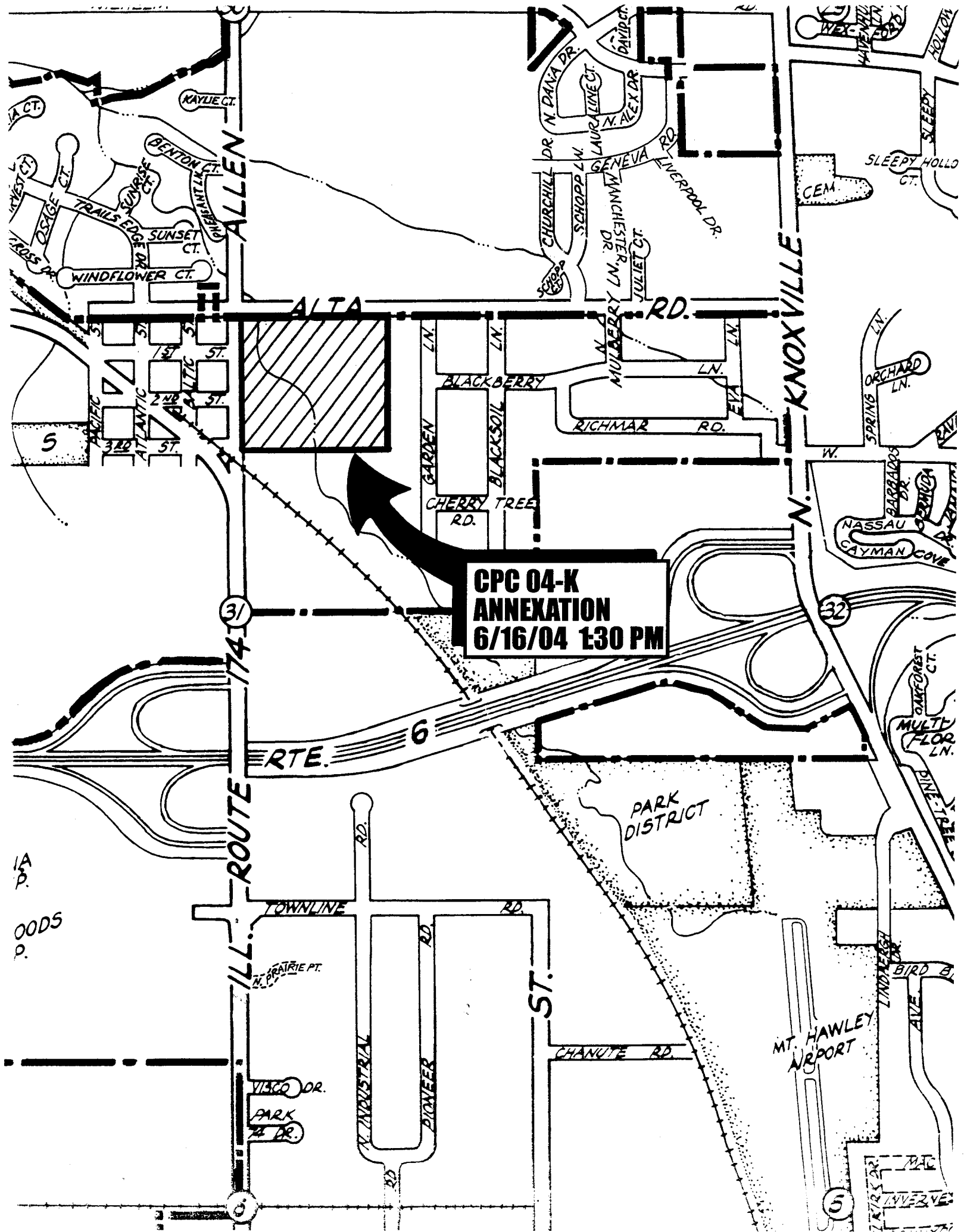
Please see the next two pages for a copy of the map depicting the request by RBT Trust for approval of an **Annexation Petition and Annexation Agreement, and a copy of the site plan** with a temporary address of 2300 W. Alta Road. The developer is proposing 53 single-family lots and 34 duplex lots on approximately 40 acres.

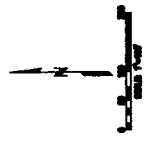
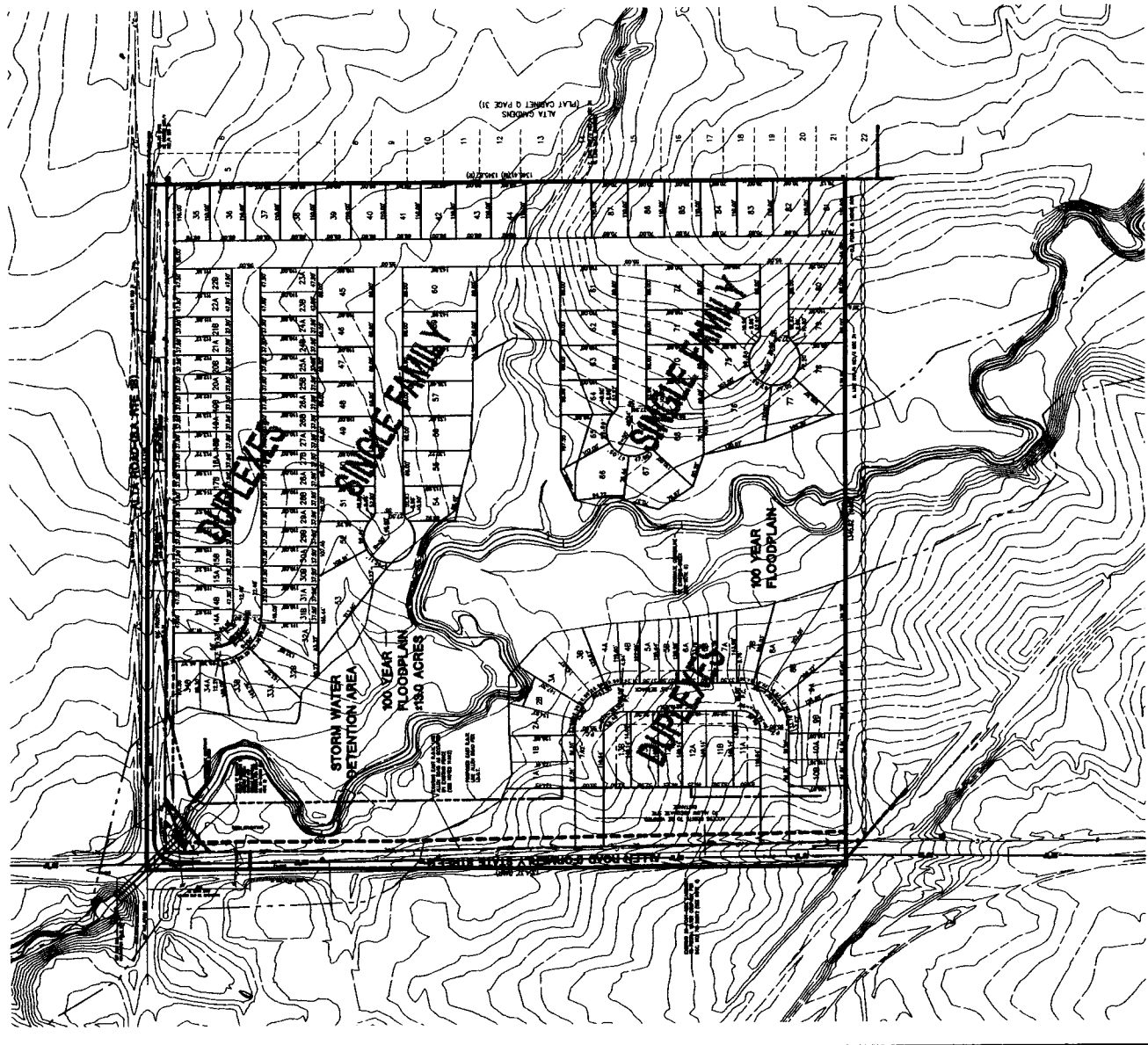
Please submit any comments or concerns relating to this case to the Planning and Growth Management Department no later than **Friday, June 4, 2004.**

Should you need more information, feel free to contact me at 494-8667.

LMA/ps

Attachments





LEGEND:

- (N) RECORDED
- (N) RECORDED RECORD
- CONCRETE MARKER
- UTILITY POLE
- UTILITY POLE W/ TRANSFORMER
- UTILITY POLE W/ SIGN
- OUTLINE
- EXIST. MARKER
- COMMUNICATIONS MARKER
- WATER VALVE
- SEWER
- DIRECTION OF FLOW
- FIRE HYDRANT
- OVERHEAD UTILITY LINE
- FENCE
- UNDERGROUND TELEPHONE LINE
- BOUNDARY OF 100-YEAR FLOOD PLAIN
- FROM TOP MAP

AREA OF SITE 439.38 AC
 SINGLE FAMILY LOTS 63
 DUPLEX LOTS 5423 = 68
 TOTAL LOTS 121

		PREPARED BY FAYRWEATHER 40 ACRES AT ALLEN & ALTA SITE PLAN
DATE 10/1/80	DRAWN BY J. L. ALLEN	SHEET NO. 1 OF 1
CHECKED BY J. L. ALLEN	SCALE 1" = 40'	PROJECT NO. 84-400