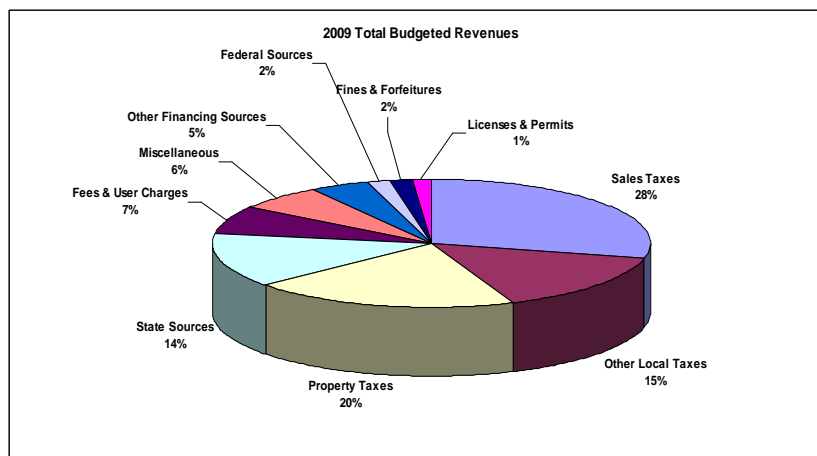




2009 Preliminary Budget Revenue Review

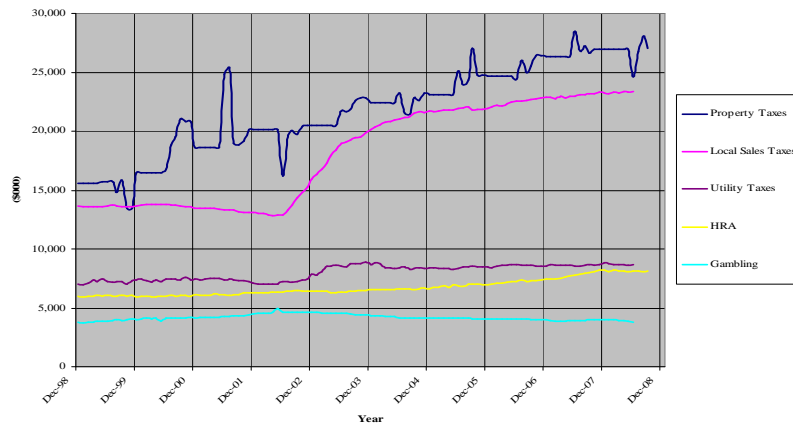


2009 Revenues





Local Tax Dollars

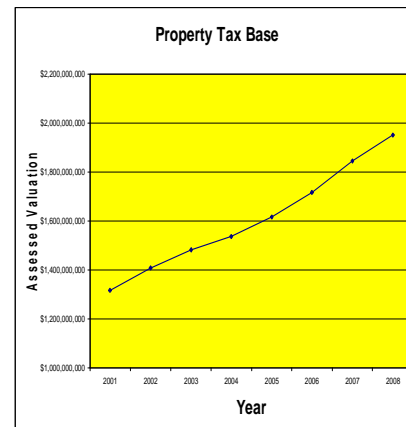


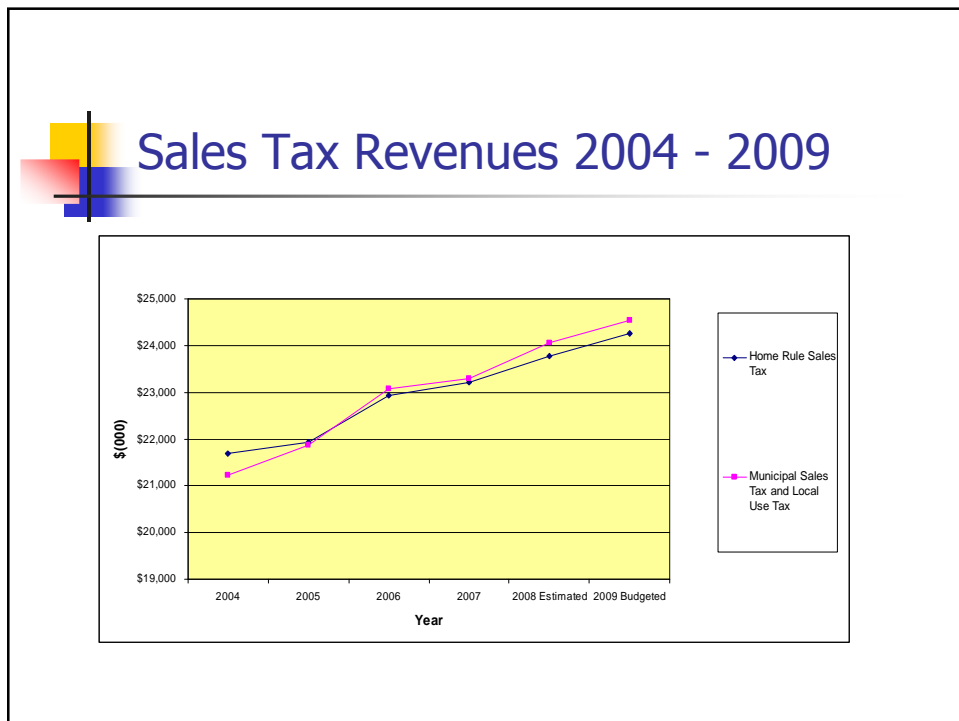
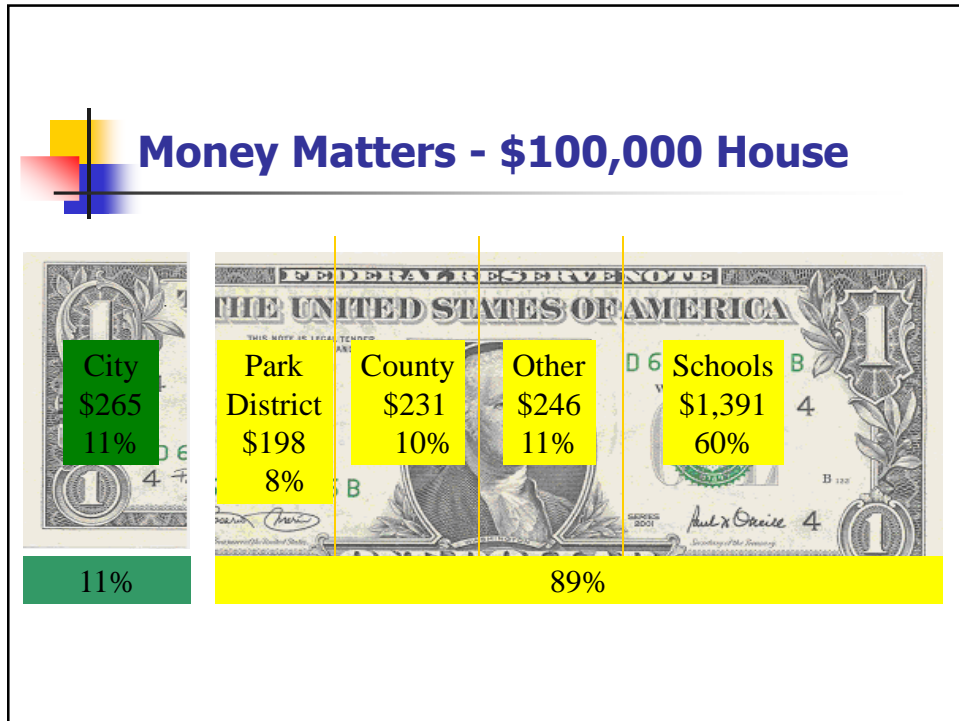
Property Tax Base (EAV) Growth

■ Property Tax Base (EAV) Growth Rate

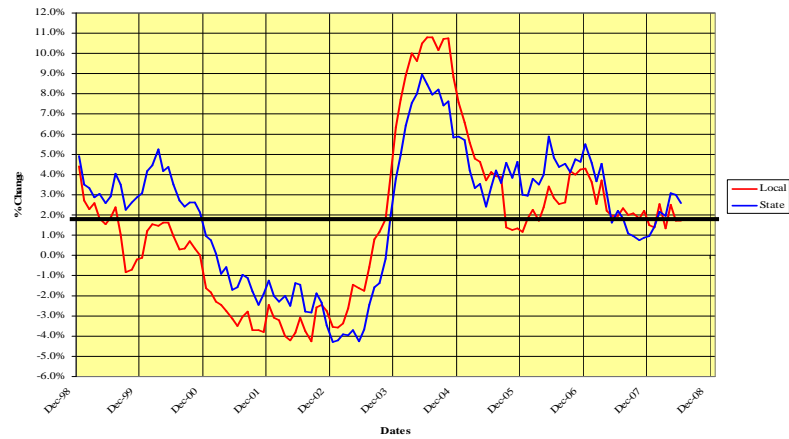
Year	Percentage Increase
2000	5.61%
2001	6.59%
2002	6.90%
2003	5.24%
2004	3.62%*
2005	5.19%
2006	6.17%
2007	7.63%
2008 Estimated	5.75%

* Includes impact of State mandated increase in homestead exemption and senior citizen property tax freeze

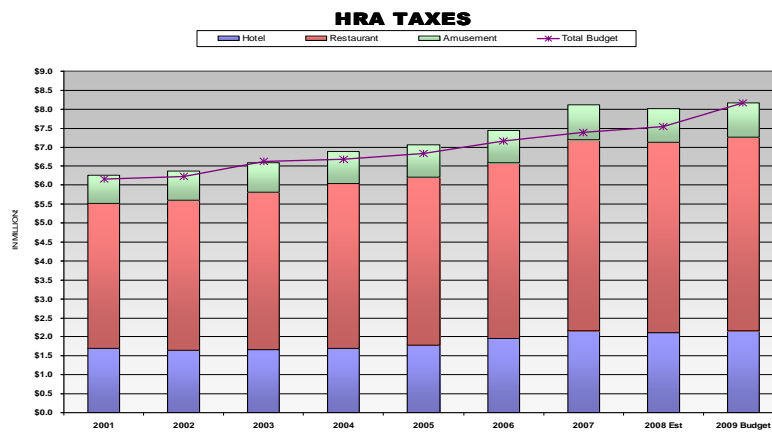


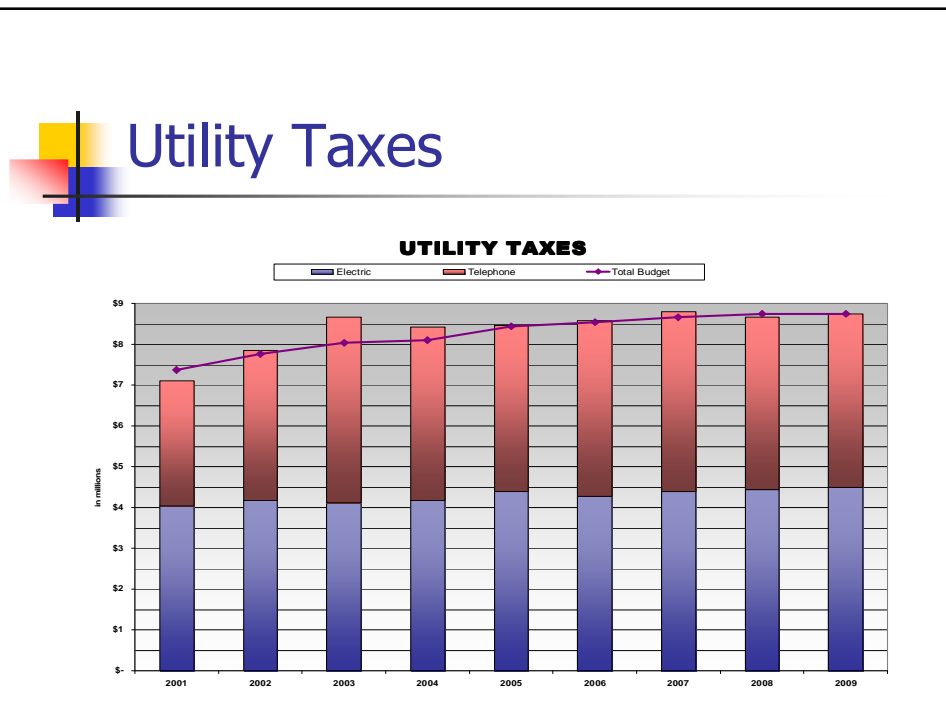
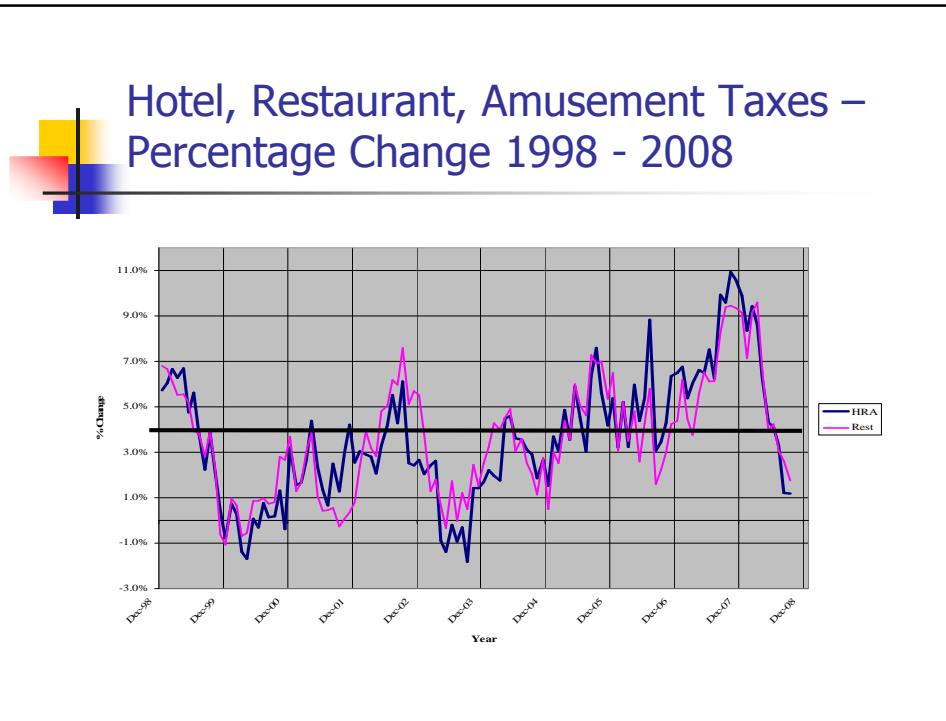


Sales Tax Revenues Percentage Change in Sales Tax Base

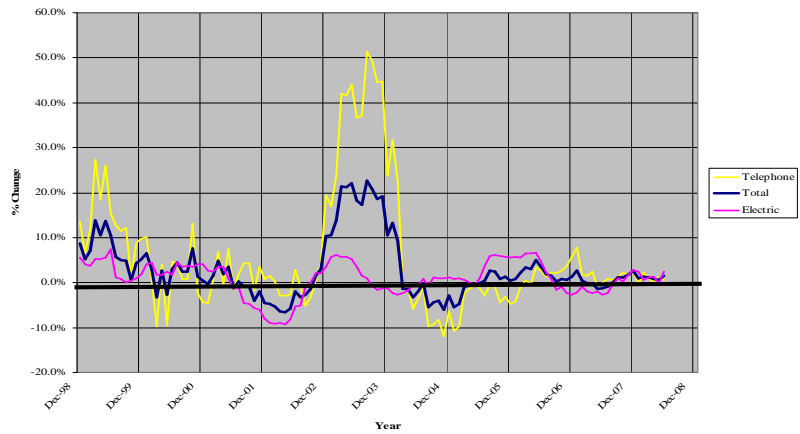


Hotel, Restaurant & Amusement Taxes

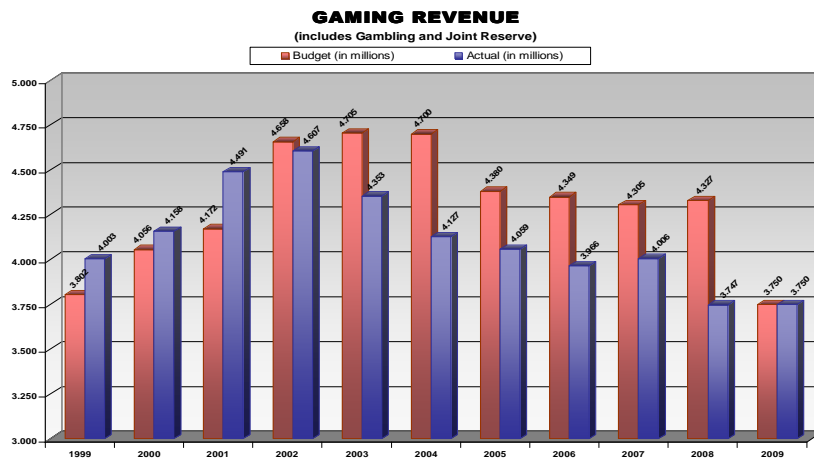




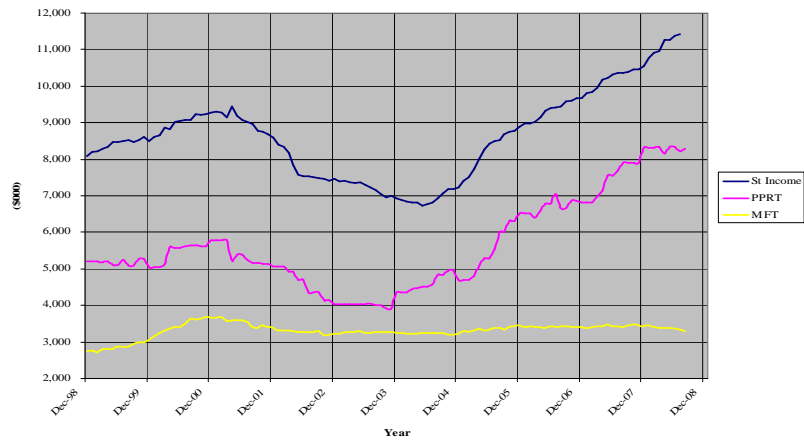
Utility Tax Revenues – Percentage Change 1998 - 2008



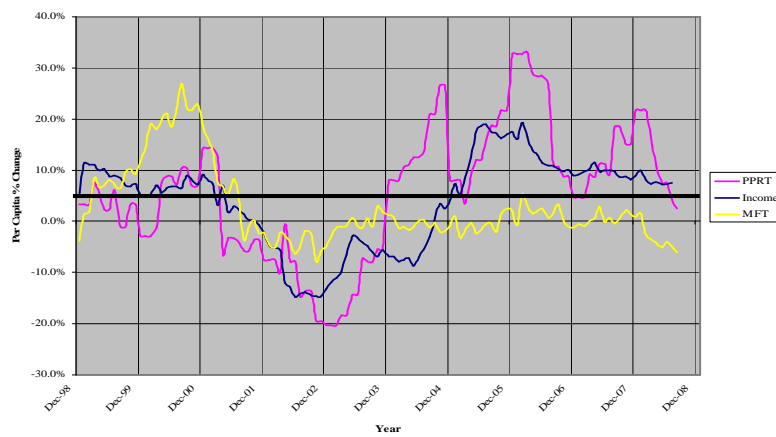
Gaming Revenues

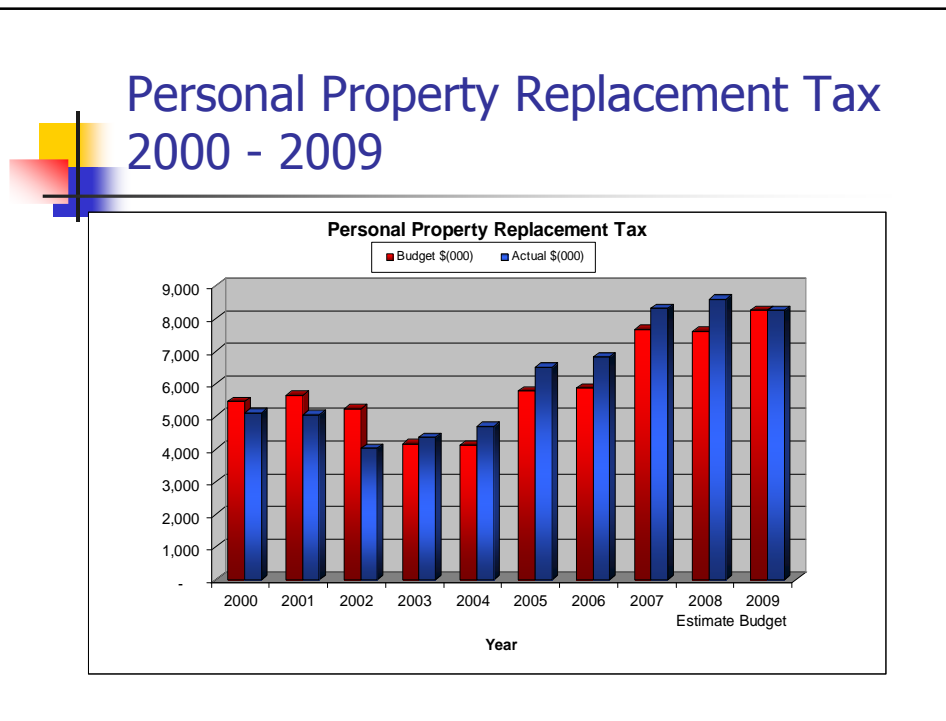
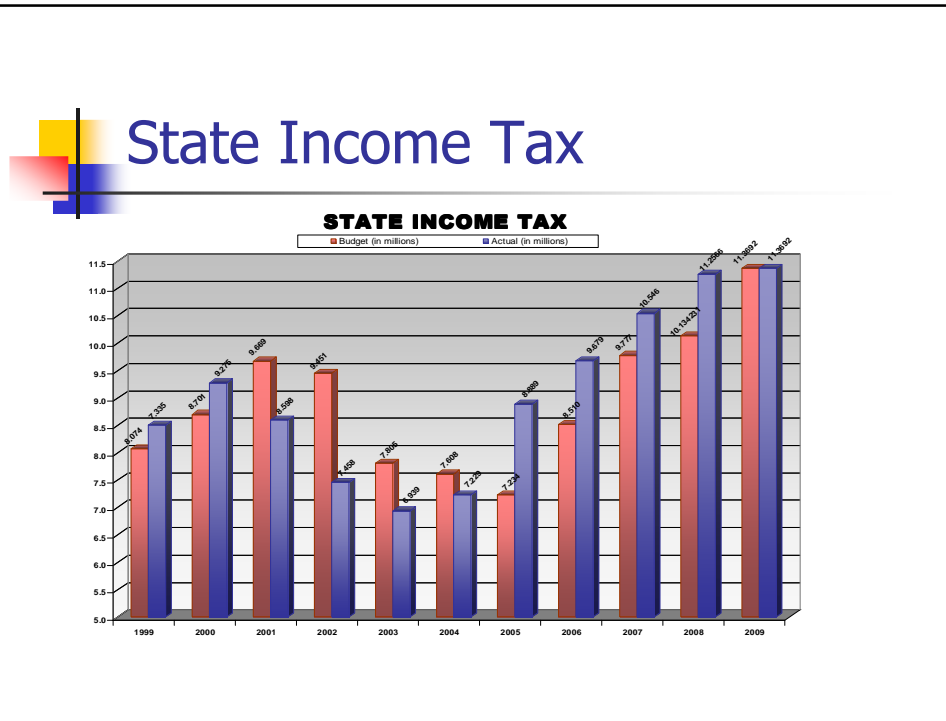


Per Capita State Shared Revenues – State Income Tax, Personal Property Replacement Tax (PPRT) and State Motor Fuel Tax (MFT)



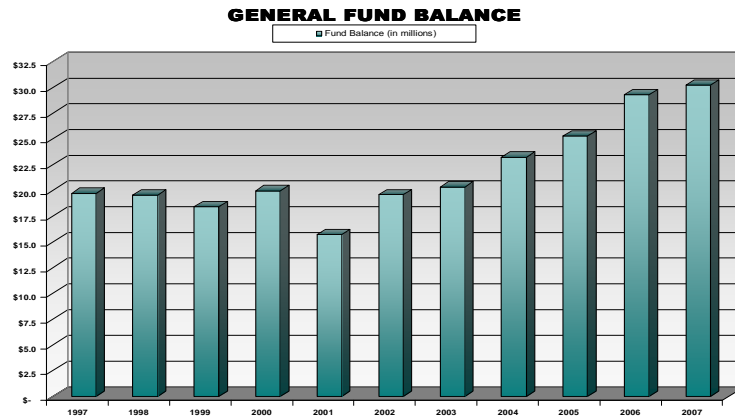
Percentage Change in Per Capita State Shared Revenues – State Income Tax, Personal Property Replacement Tax (PPRT) and State Motor Fuel Tax (MFT) 1998 - 2008







General Fund – Fund Balance



General Fund – Fund Balance

