

CRIME SUMMARY

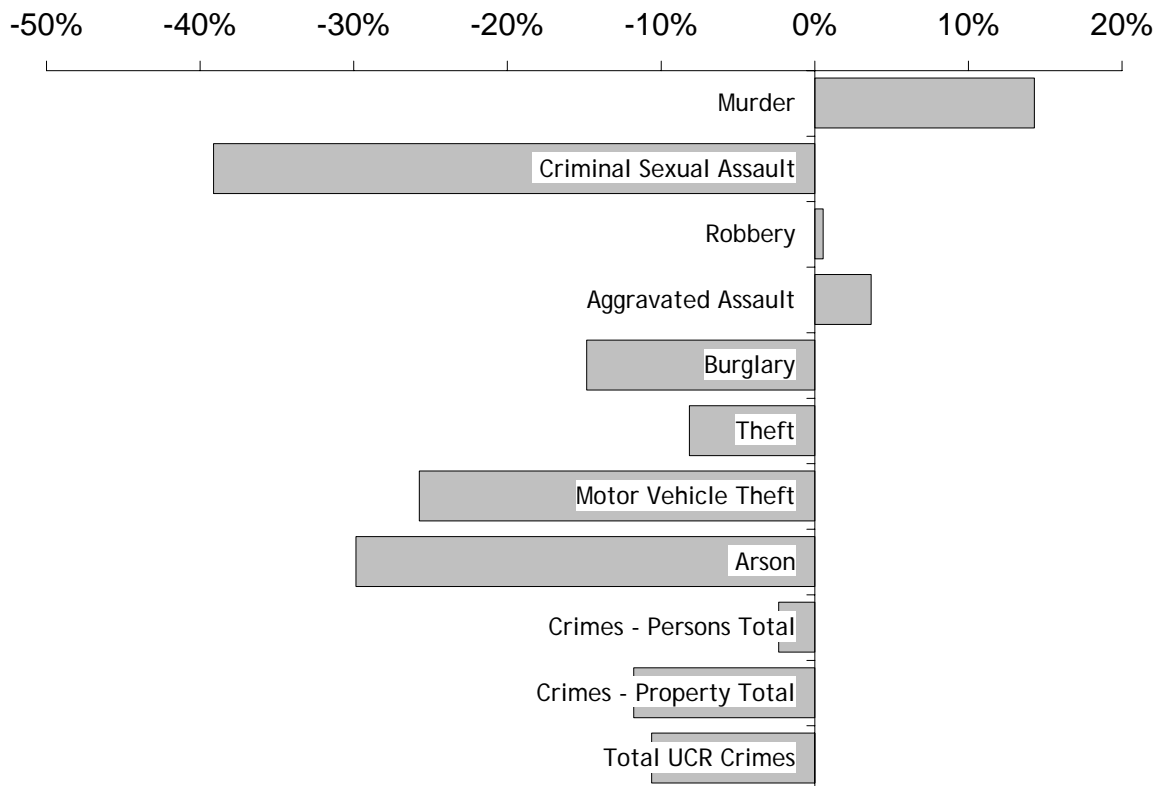
Index Crime January - November 2006

City of Peoria Index Crime DOWN -11%



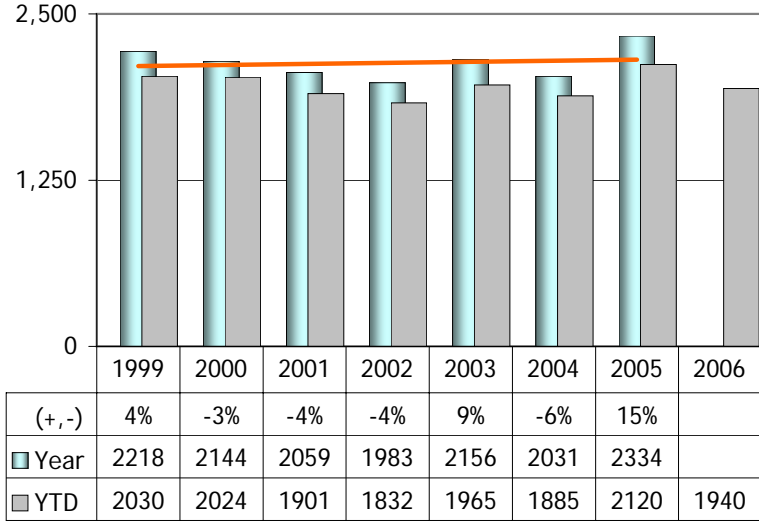
	Jan - Nov 2005	Jan - Nov 2006	(+ , -)
Murder	14	16	14%
Criminal Sexual Assault	115	70	-39%
Robbery	359	361	1%
Aggravated Assault	490	508	4%
Burglary	1,725	1,469	-15%
Theft	4,503	4,136	-8%
Motor Vehicle Theft	703	522	-26%
Arson	67	47	-30%
Crimes - Persons Total	978	955	-2%
Crimes - Property Total	6,998	6,174	-12%
Total UCR Crimes	7,976	7,129	-11%

Y-T-D PERCENT CHANGE 2005 vs. 2006



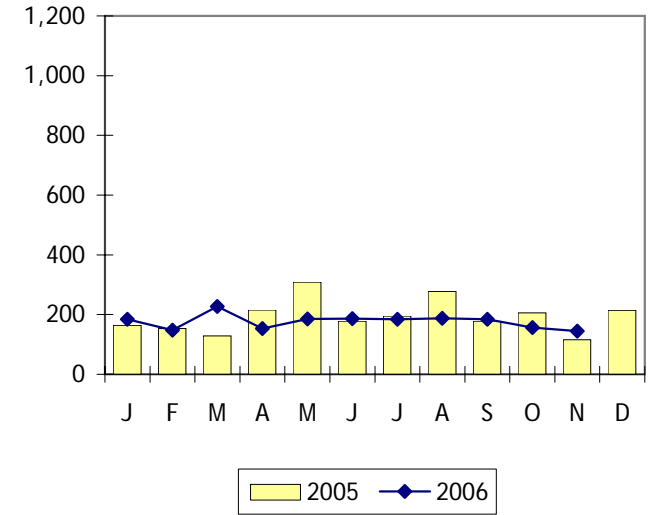
	% CHANGE		
	NOV	YTD	PAGE
Arrests			
First Offender	25	-8	2
Repeat Offender	27	10	2
Arrest Total	27	7	3
Calls			
Dispatched Urgent	8	3	3
Dispatched Routine	-2	-4	4
Dispatched Backlog	-1	-4	4
Dispatched Total	2	-1	5
On-View	2	7	5
Call Total (Dispatched and On-View)	2	2	6
Crimes - Persons			
Murder	200	14	10
Criminal Sexual Assault	-33	-39	10
Robbery	-15	1	11
Aggravated Assault	-5	4	11
Crimes - Persons Total	-11	-2	12
Crimes - Property			
Burglary	-1	-15	12
Theft	0	-8	13
Motor Vehicle Theft	-59	-26	13
Arson	25	-30	14
Crimes - Property Total	-10	-12	14
Crimes - Total Persons & Property	-10	-11	15
Drug Arrests			
Cannabis	-13	32	15
Controlled Substances	-34	-6	16
Drug Paraphernalia	-67	-7	16
Needles & Syringes	-100	-50	17

	% CHANGE		
	NOV	YTD	PAGE
Juvenile - Crimes Against Person Arrests			
Murder	0	0	17
Criminal Sexual Assault	0	0	18
Robbery	-100	-100	18
Aggravated Assault	-30	-2	19
Violent Total Juvenile Arrests	-33	-1	19
Juvenile - Property Crimes Arrests			
Burglary	33	49	20
Theft	67	15	20
Motor Vehicle Theft	-50	200	21
Arson	100	-40	21
Property Total Juvenile Arrests	41	17	22
Juvenile - Total Violent / Property Arrests	2	8	22
Municipal Ordinances - MOVNs			
Noise Violations	-64	-67	23
Trash and Litter	44	2	23
Curfew & Truancy	-16	9	24
Alcohol by Minor	165	-6	24
Tobacco by Minor	-13	-1	25
Total (all ordinances)	34	-20	25
MOVNS itemized 2006 vs 2005	34	-20	26
Quality of Life MOVNS	-8	-25	28
Traffic			
Tickets	19	6	30
Withdraw if Repaired Tickets	56	30	30
D.U.I. Arrests	-23	-5	31
Accidents	13	-3	31
Service Districts			
Districts 1-6, Part 1 and Drug			36
Districts 8-14, Part 1 and Drug			37
Districts 15-19, Part 1 and Drug			38
			39

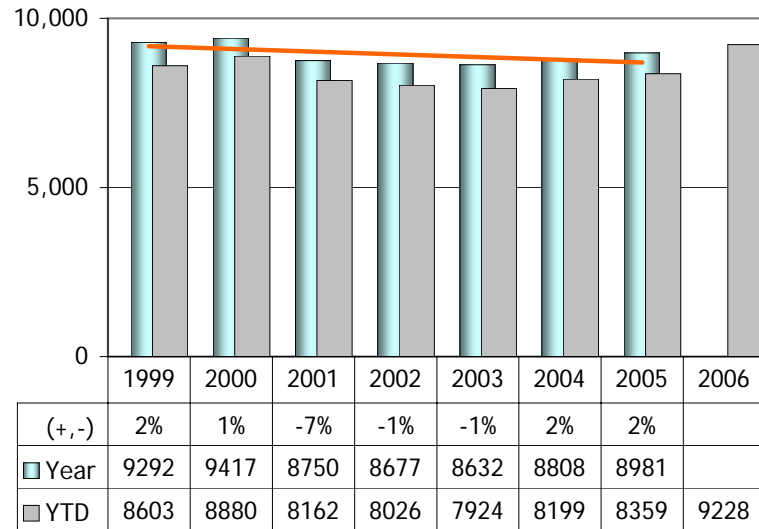


ARRESTS First Offender

	2005	2006	(+, -)
Jan	164	184	12%
Feb	153	148	-3%
Mar	129	227	76%
Apr	215	153	-29%
May	309	185	-40%
Jun	178	186	4%
Jul	195	184	-6%
Aug	277	188	-32%
Sep	178	184	3%
Oct	206	156	-24%
Nov	116	145	25%
Dec	214		
YEAR	2,334		
YTD	2,120	1,940	-8%

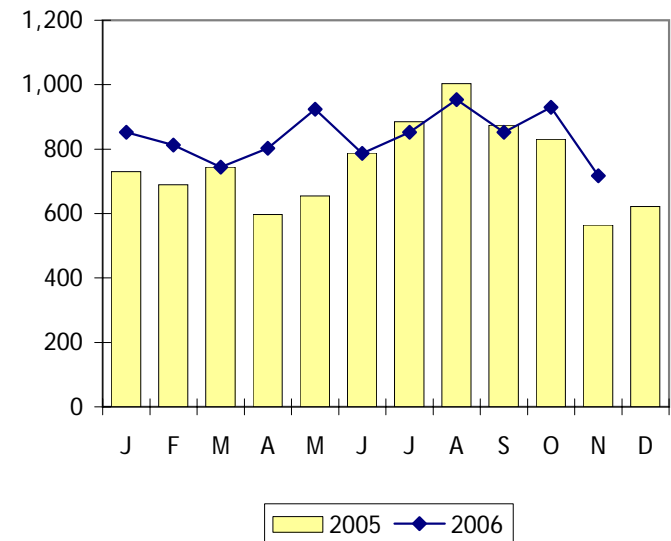


Data source: Records Dept.

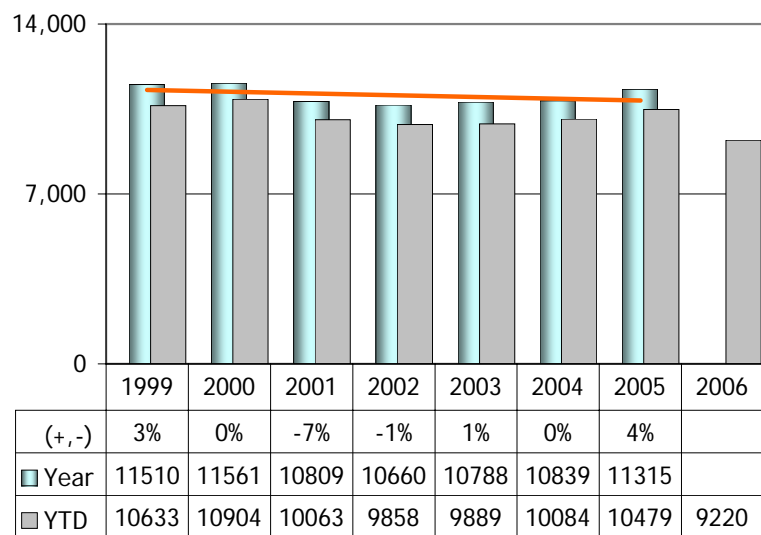


ARRESTS Repeat Offender

	2005	2006	(+, -)
Jan	730	852	17%
Feb	689	813	18%
Mar	744	744	0%
Apr	597	803	35%
May	655	924	41%
Jun	788	787	0%
Jul	885	852	-4%
Aug	1003	954	-5%
Sep	874	852	-3%
Oct	830	930	12%
Nov	564	717	27%
Dec	622		
YEAR	8,981		
YTD	8,359	9,228	10%



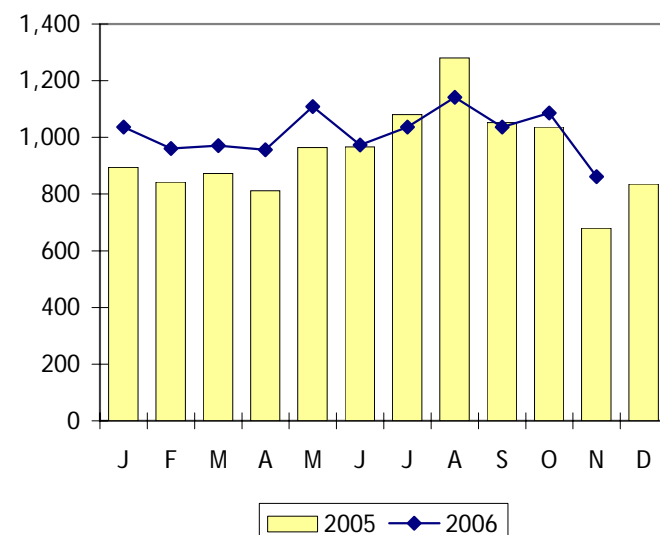
Data source: Records Dept.



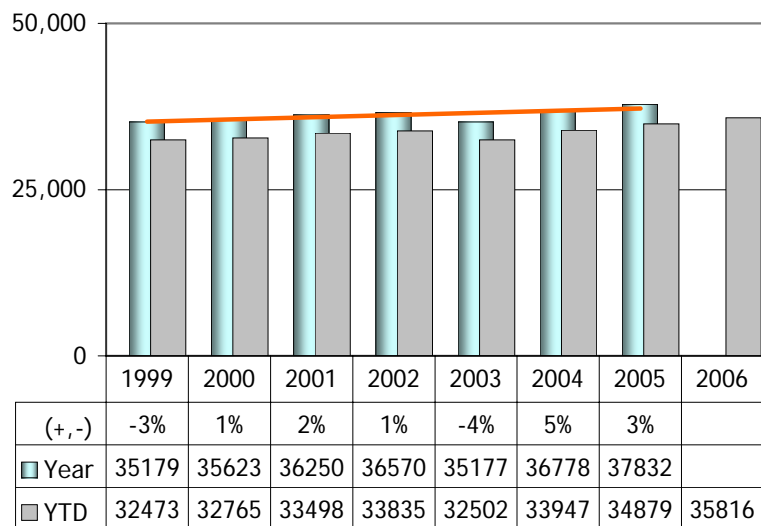
ARRESTS

Arrest Total

	2005	2006	(+, -)
Jan	894	1,036	16%
Feb	842	961	14%
Mar	873	971	11%
Apr	812	956	18%
May	964	1,109	15%
Jun	966	973	1%
Jul	1,080	1,036	-4%
Aug	1,280	1,142	-11%
Sep	1,052	1,036	-2%
Oct	1,036	1,086	5%
Nov	680	862	27%
Dec	836		
YEAR	11,315		
YTD	10,479	11,168	7%



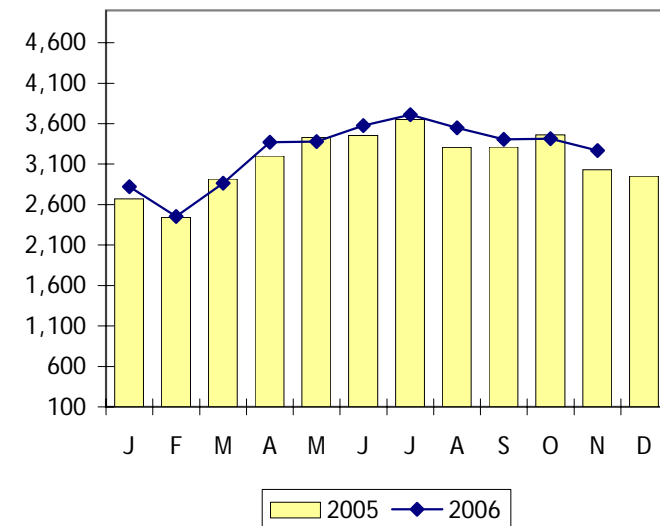
Data source: Records Dept.



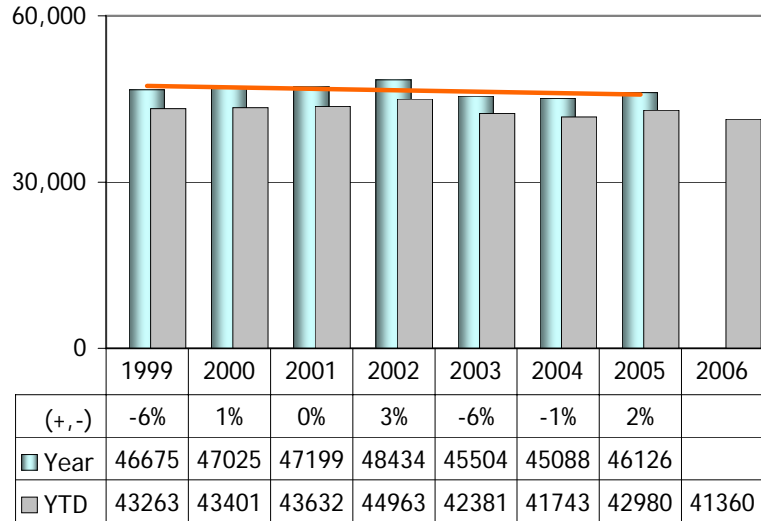
CALLS

Dispatched Urgent

	2005	2006	(+, -)
Jan	2669	2822	6%
Feb	2441	2453	0%
Mar	2914	2866	-2%
Apr	3202	3369	5%
May	3431	3380	-1%
Jun	3455	3578	4%
Jul	3653	3710	2%
Aug	3309	3549	7%
Sep	3313	3406	3%
Oct	3461	3416	-1%
Nov	3031	3267	8%
Dec	2953		
YEAR	37,832		
YTD	34,879	35,816	3%

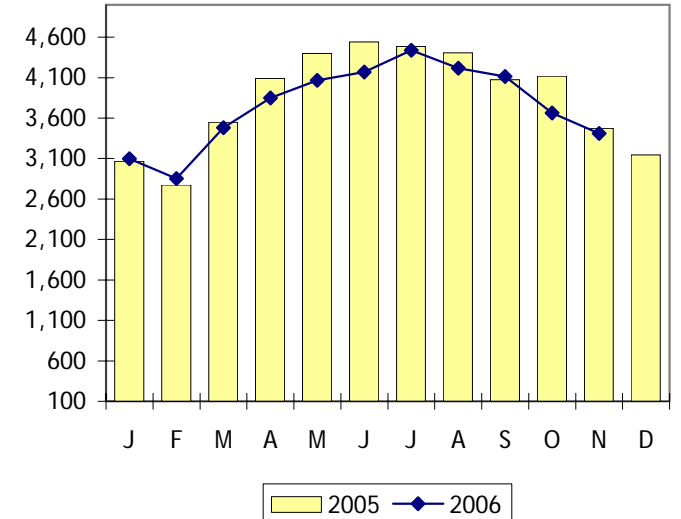


Data source: I.S. Dept / kad0m11 report

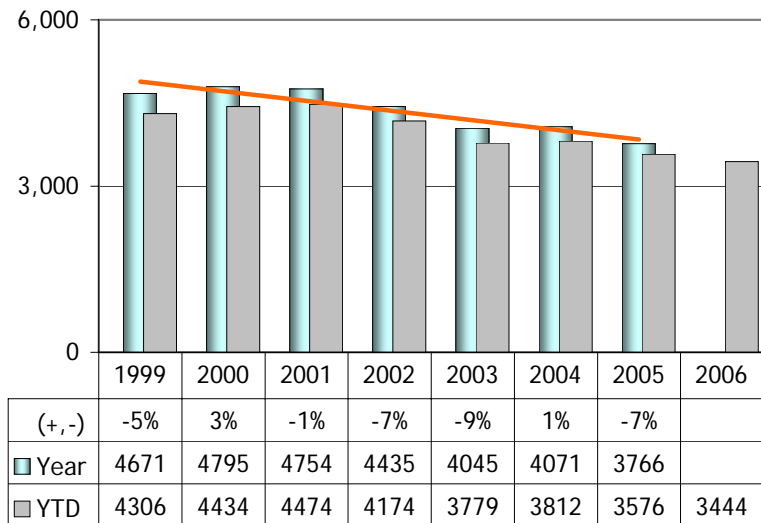


CALLS Dispatched Routine

	2005	2006	(+, -)
Jan	3068	3097	1%
Feb	2774	2852	3%
Mar	3550	3480	-2%
Apr	4090	3850	-6%
May	4397	4066	-8%
Jun	4540	4171	-8%
Jul	4486	4438	-1%
Aug	4408	4218	-4%
Sep	4073	4113	1%
Oct	4119	3665	-11%
Nov	3475	3410	-2%
Dec	3146		
YEAR	46,126		
YTD	42,980	41,360	-4%

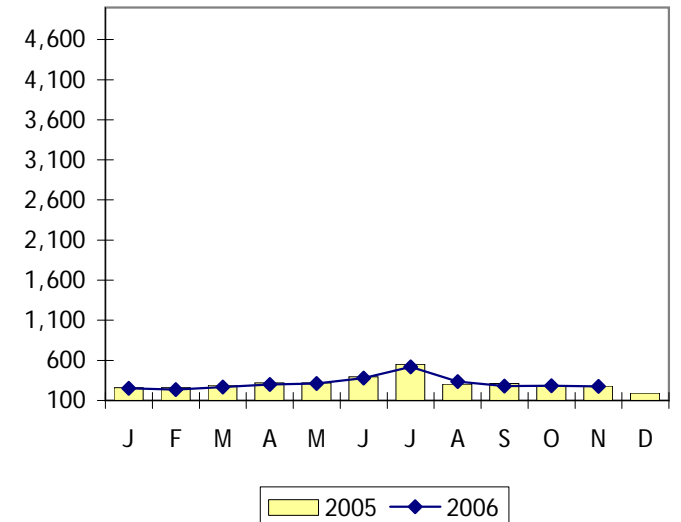


Data source: I.S. Dept / kad0m11 report

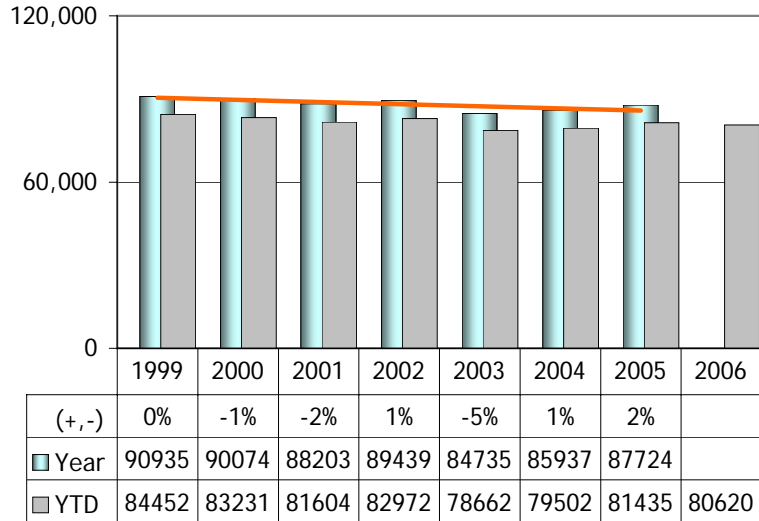


CALLS Dispatched Backlog

	2005	2006	(+, -)
Jan	260	251	-3%
Feb	261	234	-10%
Mar	292	269	-8%
Apr	320	301	-6%
May	321	312	-3%
Jun	395	381	-4%
Jul	549	517	-6%
Aug	305	337	10%
Sep	312	281	-10%
Oct	282	284	1%
Nov	279	277	-1%
Dec	190		
YEAR	3,766		
YTD	3,576	3,444	-4%

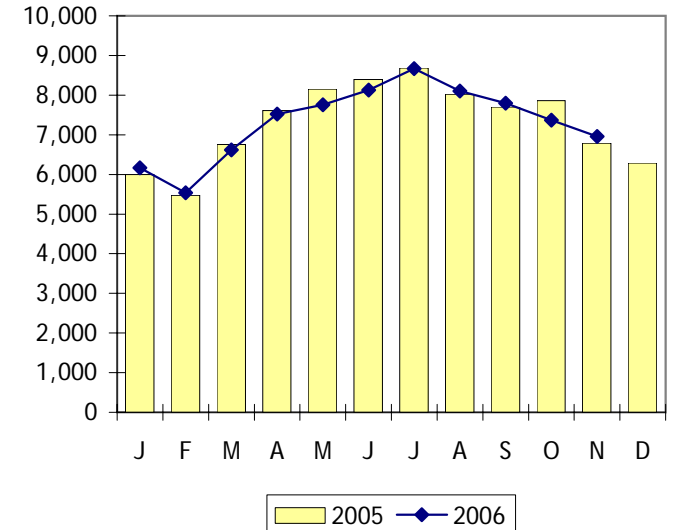


Data source: I.S. Dept / kad0m11 report

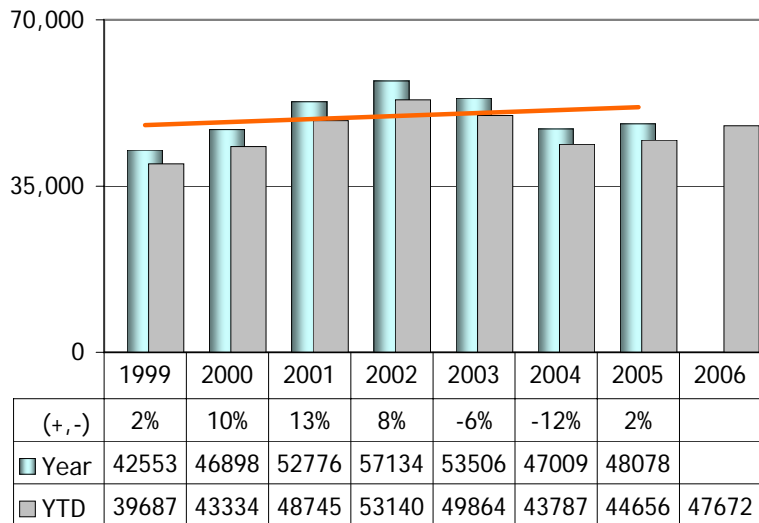


CALLS Dispatched Total

	2005	2006	(+, -)
Jan	5997	6170	3%
Feb	5476	5539	1%
Mar	6756	6615	-2%
Apr	7612	7520	-1%
May	8149	7758	-5%
Jun	8390	8130	-3%
Jul	8688	8665	0%
Aug	8022	8104	1%
Sep	7698	7800	1%
Oct	7862	7365	-6%
Nov	6785	6954	2%
Dec	6289		
YEAR	87,724		
YTD	81,435	80,620	-1%

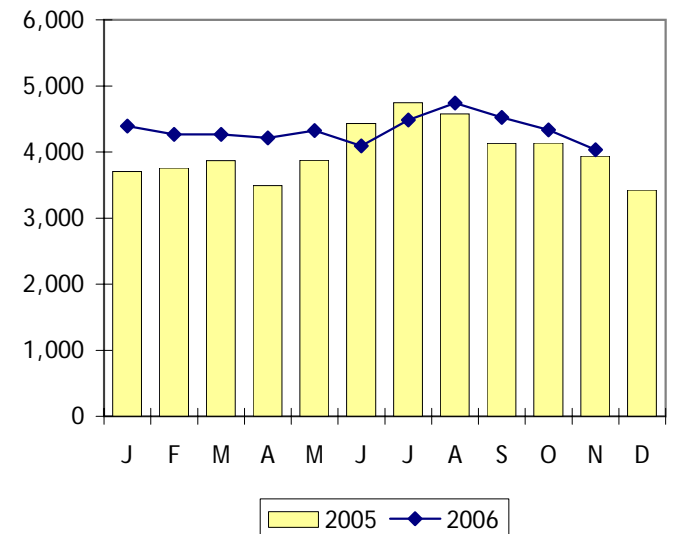


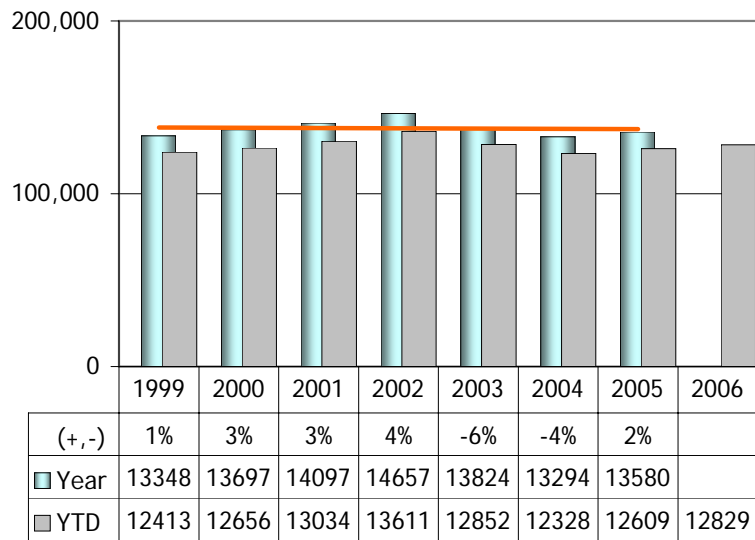
Data source: I.S. Dept / kad0m11 report



CALLS On-View

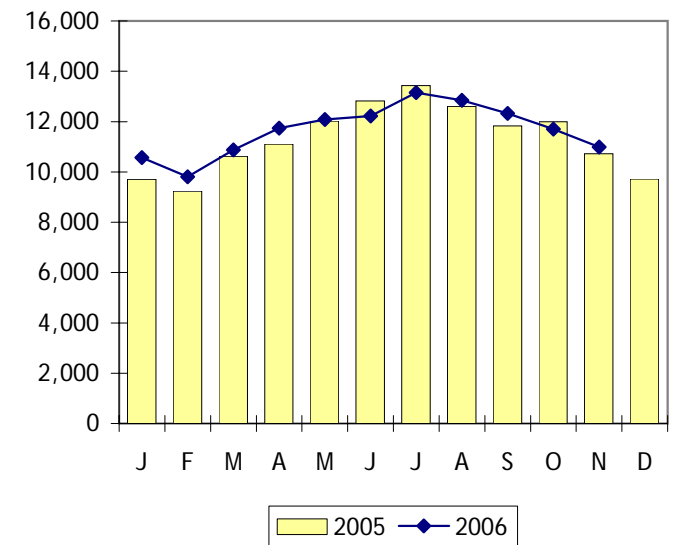
	2005	2006	(+, -)
Jan	3704	4394	19%
Feb	3757	4265	14%
Mar	3870	4265	10%
Apr	3493	4213	21%
May	3874	4324	12%
Jun	4431	4093	-8%
Jul	4747	4482	-6%
Aug	4576	4743	4%
Sep	4130	4525	10%
Oct	4135	4333	5%
Nov	3939	4035	2%
Dec	3422		
YEAR	48,078		
YTD	44,656	47,672	7%



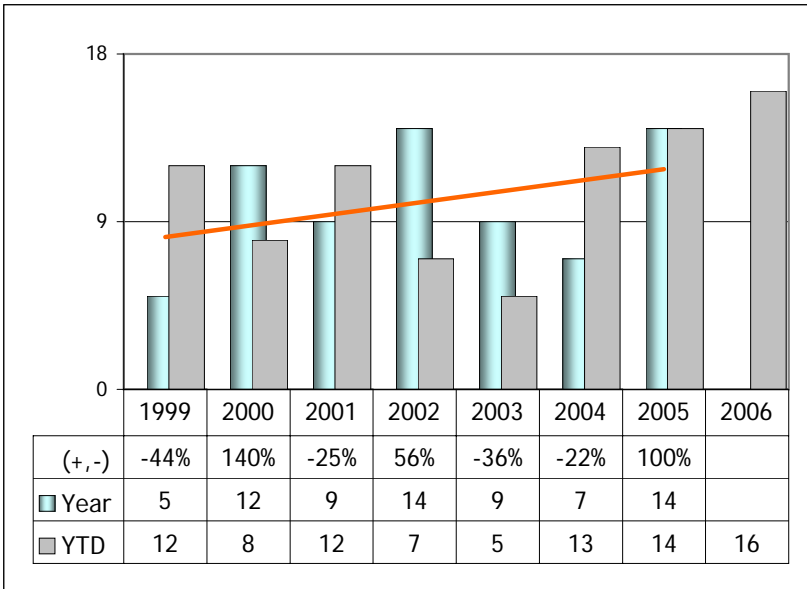


CALLS Dispatched and On-View

	2005	2006	(+, -)
Jan	9701	10564	9%
Feb	9233	9804	6%
Mar	10626	10880	2%
Apr	11105	11733	6%
May	12023	12082	0%
Jun	12821	12223	-5%
Jul	13435	13147	-2%
Aug	12598	12847	2%
Sep	11828	12325	4%
Oct	11997	11698	-2%
Nov	10724	10989	2%
Dec	9711		
YEAR	135,802		
YTD	126,091	128,292	2%

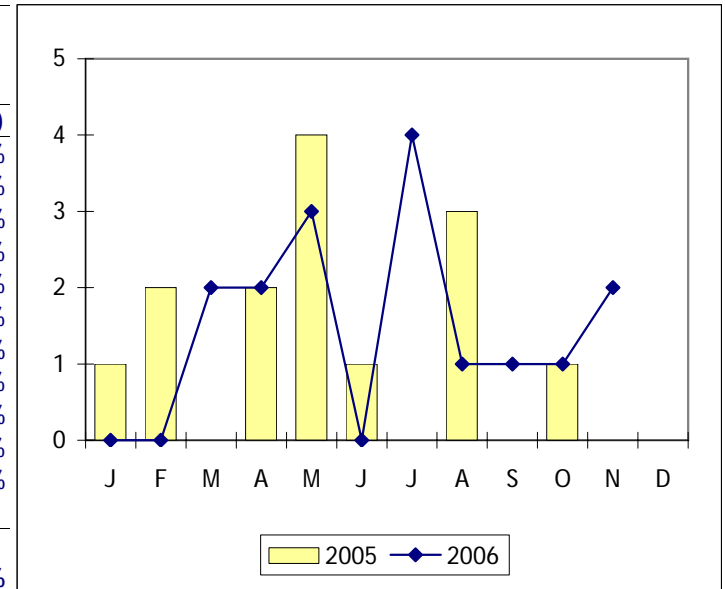


Data source: I.S. Dept / kad0m11 report

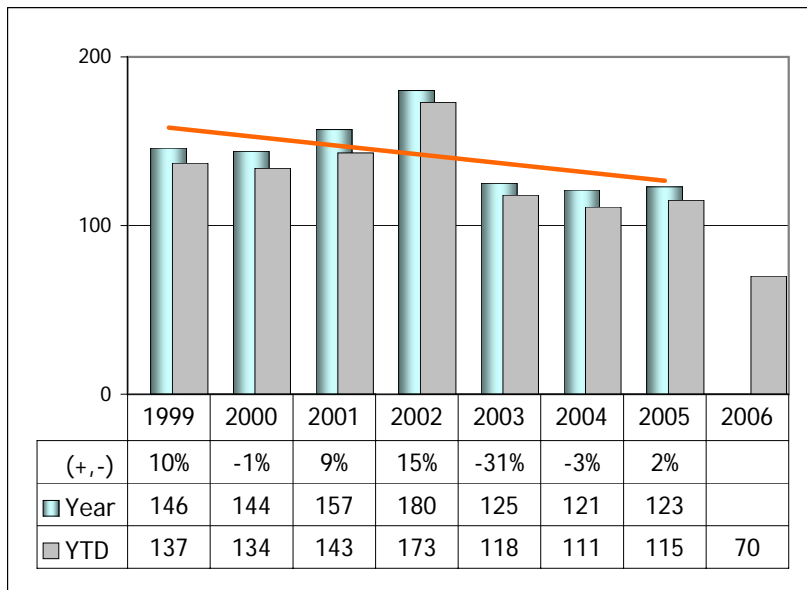


Offenses 0110, 30; does not include attempts.

CRIMES - PERSONS			
Murder			
	2005	2006	(+, -)
Jan	1	0	-100%
Feb	2	0	-100%
Mar	0	2	200%
Apr	2	2	0%
May	4	3	-25%
Jun	1	0	-100%
Jul	0	4	400%
Aug	3	1	-67%
Sep	0	1	100%
Oct	1	1	0%
Nov	0	2	200%
Dec	0		
YEAR	14		
YTD	14	16	14%

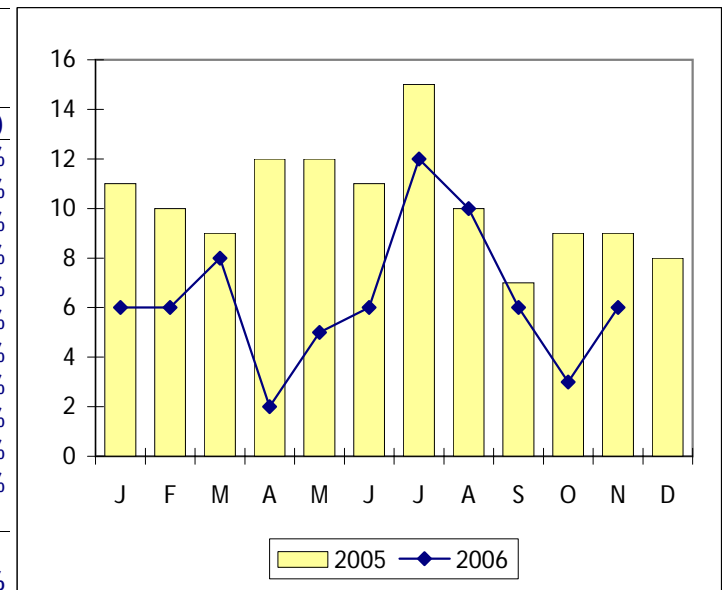


Data source: Records Dept UCR report

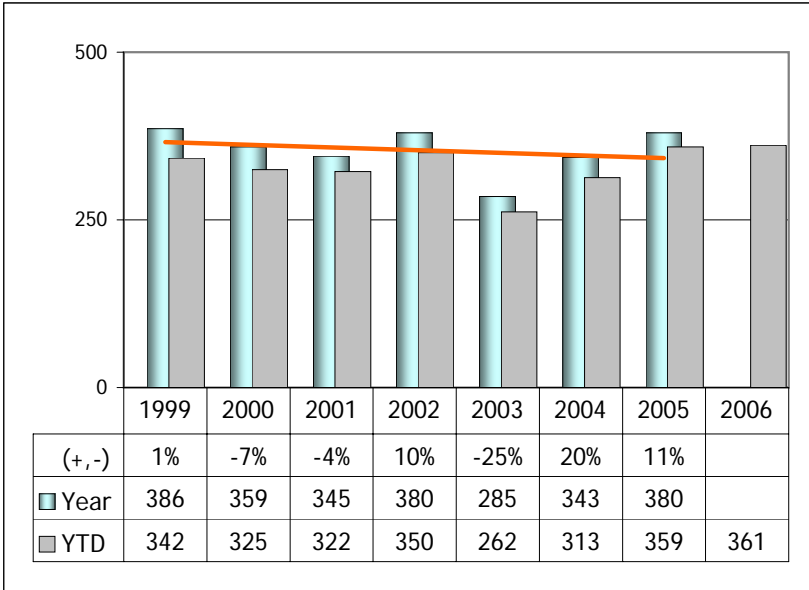


Offenses 0260, 61, 62, 81; attempts included.

CRIMES - PERSONS			
Criminal Sexual Assault			
	2005	2006	(+, -)
Jan	11	6	-45%
Feb	10	6	-40%
Mar	9	8	-11%
Apr	12	2	-83%
May	12	5	-58%
Jun	11	6	-45%
Jul	15	12	-20%
Aug	10	10	0%
Sep	7	6	-14%
Oct	9	3	-67%
Nov	9	6	-33%
Dec	8		
YEAR	123		
YTD	115	70	-39%

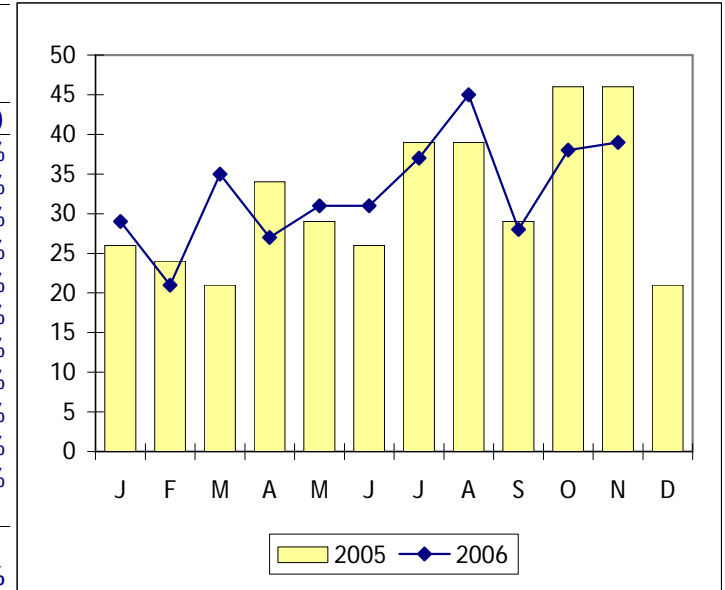


Data source: Records Dept UCR report

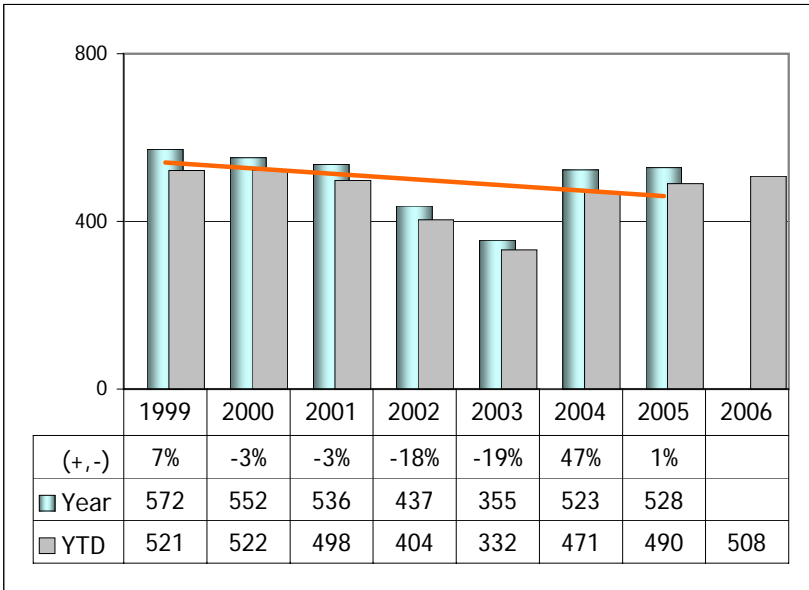


Offenses 0310, 20, 25, 26, 30; attempts included

CRIMES - PERSONS			
Robbery			
	2005	2006	(+, -)
Jan	26	29	12%
Feb	24	21	-13%
Mar	21	35	67%
Apr	34	27	-21%
May	29	31	7%
Jun	26	31	19%
Jul	39	37	-5%
Aug	39	45	15%
Sep	29	28	-3%
Oct	46	38	-17%
Nov	46	39	-15%
Dec	21		
YEAR	380		
YTD	359	361	1%

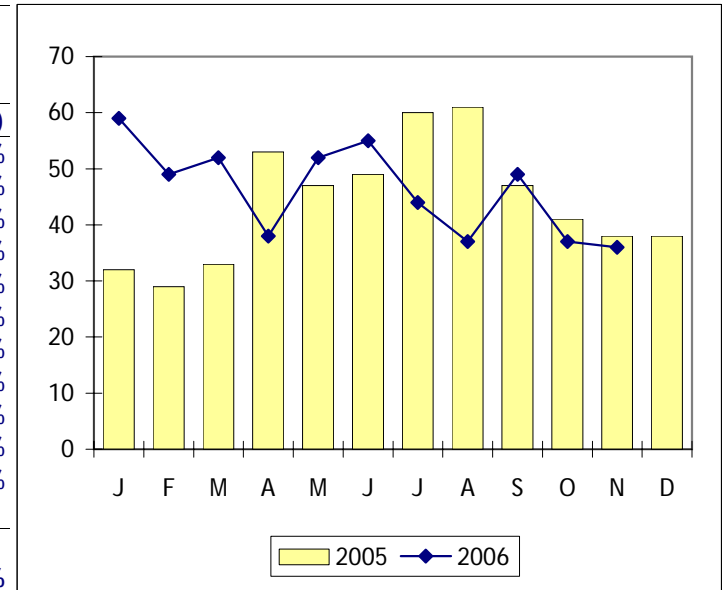


Data source: Records Dept UCR report

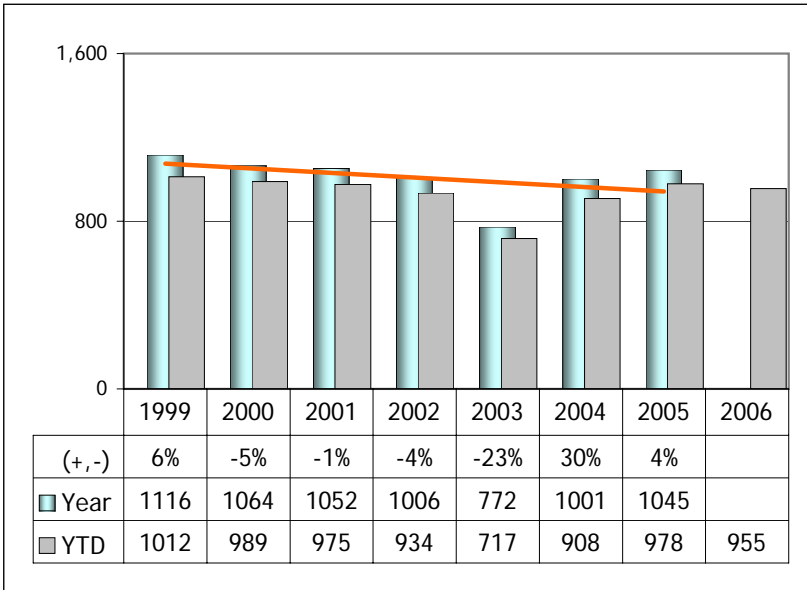


Offenses 0410, 80, 85, 90, 95, 0510, 0110 attempts, 0130 attempts

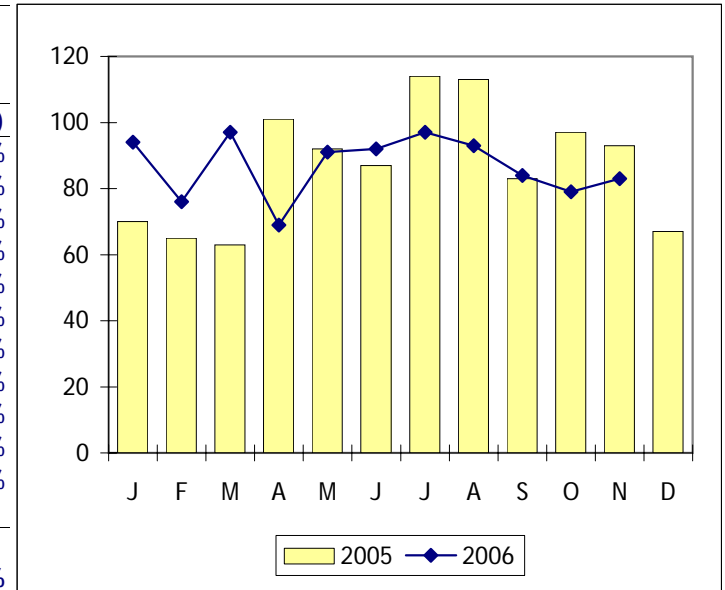
CRIMES - PERSONS			
Aggravated Assault / Battery			
	2005	2006	(+, -)
Jan	32	59	84%
Feb	29	49	69%
Mar	33	52	58%
Apr	53	38	-28%
May	47	52	11%
Jun	49	55	12%
Jul	60	44	-27%
Aug	61	37	-39%
Sep	47	49	4%
Oct	41	37	-10%
Nov	38	36	-5%
Dec	38		
YEAR	528		
YTD	490	508	4%



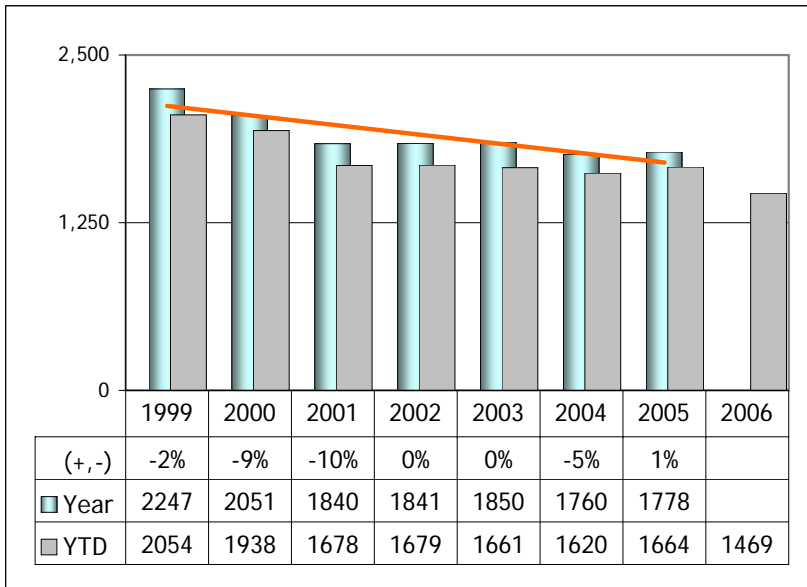
Data source: Records Dept UCR report



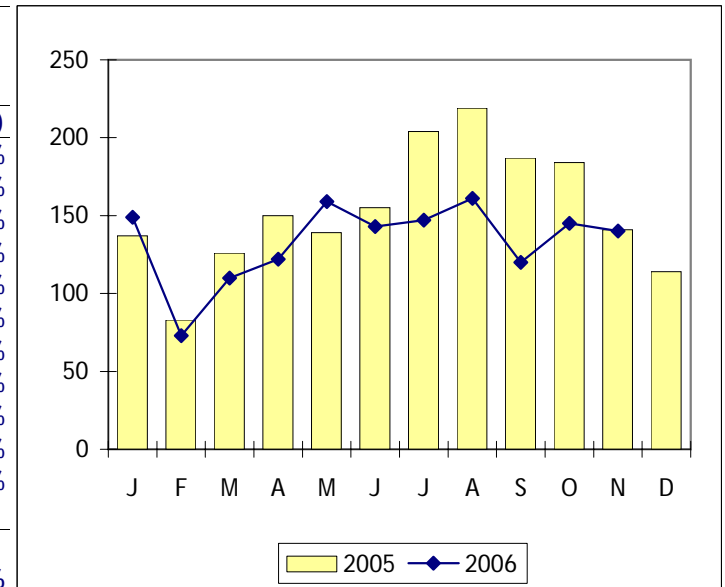
CRIMES - PERSONS			
Total			
	2005	2006	(+, -)
Jan	70	94	34%
Feb	65	76	17%
Mar	63	97	54%
Apr	101	69	-32%
May	92	91	-1%
Jun	87	92	6%
Jul	114	97	-15%
Aug	113	93	-18%
Sep	83	84	1%
Oct	97	79	-19%
Nov	93	83	-11%
Dec	67		
YEAR	1,045		
YTD	978	955	-2%



Data source: Records Dept UCR report

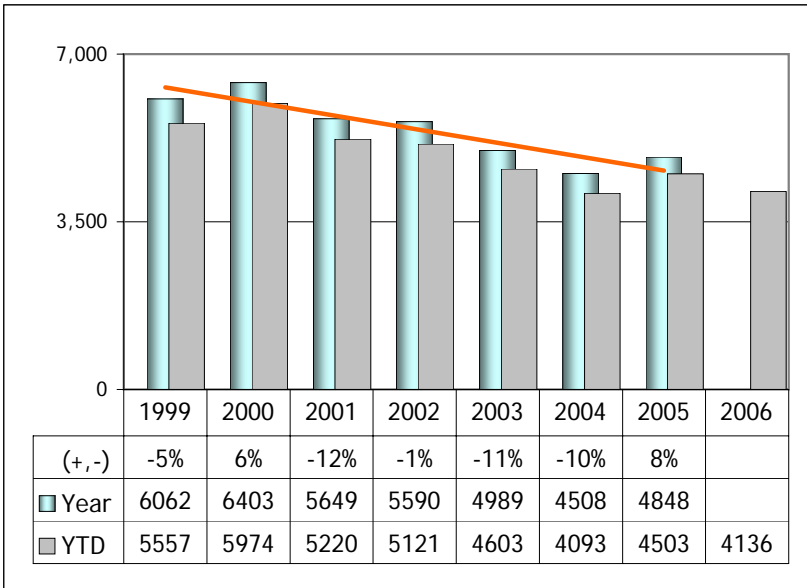


CRIMES - PROPERTY			
Burglary			
	2005	2006	(+, -)
Jan	137	149	9%
Feb	83	73	-12%
Mar	126	110	-13%
Apr	150	122	-19%
May	139	159	14%
Jun	155	143	-8%
Jul	204	147	-28%
Aug	219	161	-26%
Sep	187	120	-36%
Oct	184	145	-21%
Nov	141	140	-1%
Dec	114		
YEAR	1,839		
YTD	1,725	1,469	-15%



Data source: Records Dept UCR report

Offenses 0610, 25, 50; attempts included

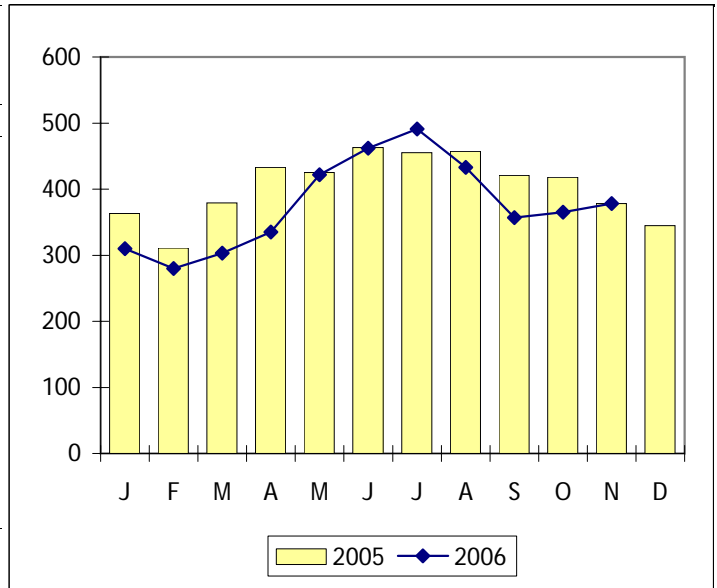


Offenses 0610, 25, 50; attempts included

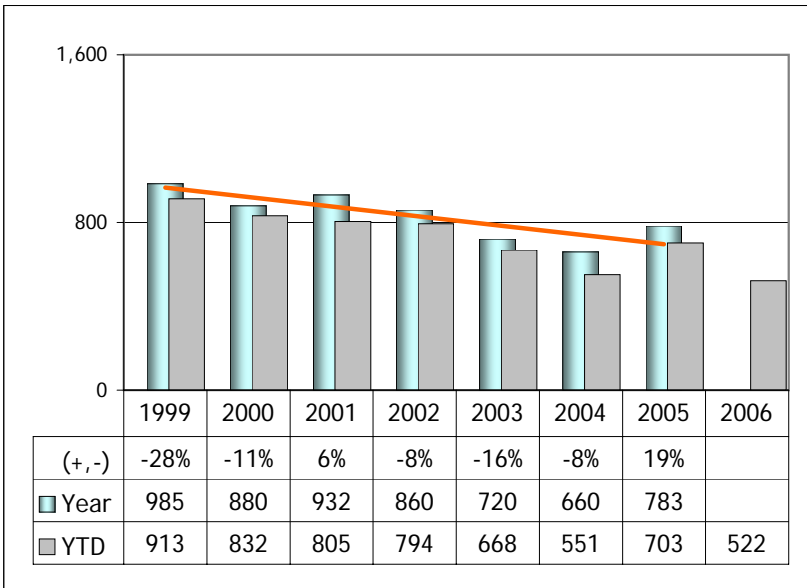
CRIMES - PROPERTY

Theft

	2005	2006	(+, -)
Jan	363	310	-15%
Feb	311	280	-10%
Mar	379	303	-20%
Apr	433	335	-23%
May	425	422	-1%
Jun	463	462	0%
Jul	455	491	8%
Aug	457	433	-5%
Sep	421	357	-15%
Oct	418	365	-13%
Nov	378	378	0%
Dec	345		
YEAR	4,848		
YTD	4,503	4,136	-8%



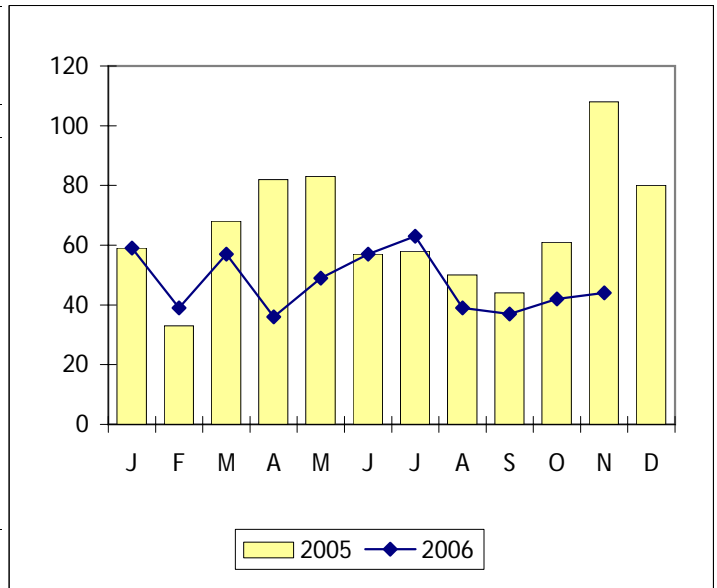
Data source: Records Dept UCR report



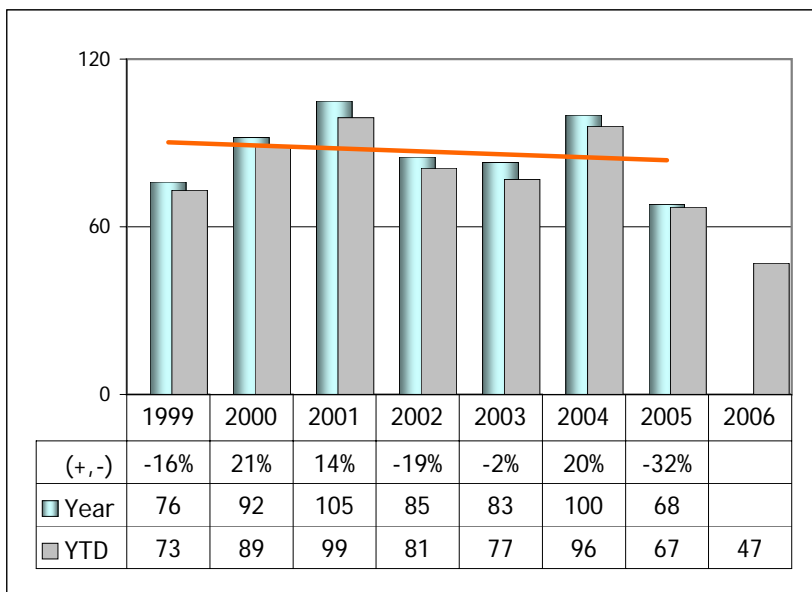
CRIMES - PROPERTY

Motor Vehicle Theft

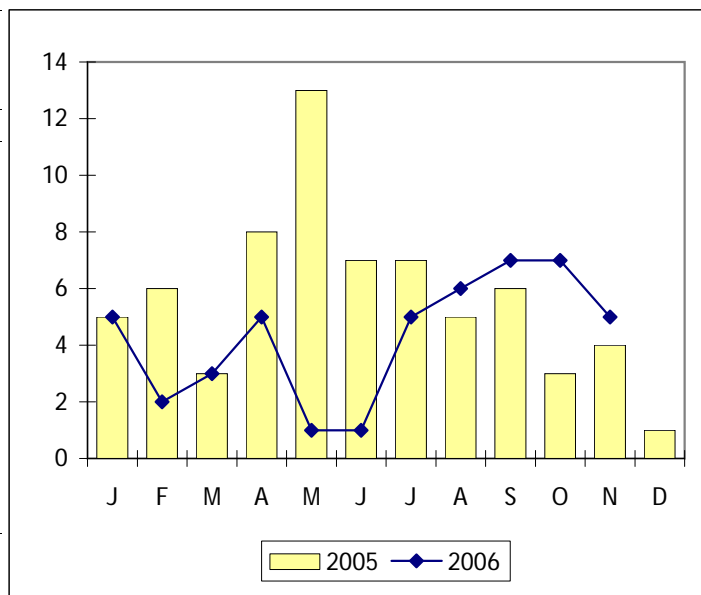
	2005	2006	(+, -)
Jan	59	59	0%
Feb	33	39	18%
Mar	68	57	-16%
Apr	82	36	-56%
May	83	49	-41%
Jun	57	57	0%
Jul	58	63	9%
Aug	50	39	-22%
Sep	44	37	-16%
Oct	61	42	-31%
Nov	108	44	-59%
Dec	80		
YEAR	783		
YTD	703	522	-26%



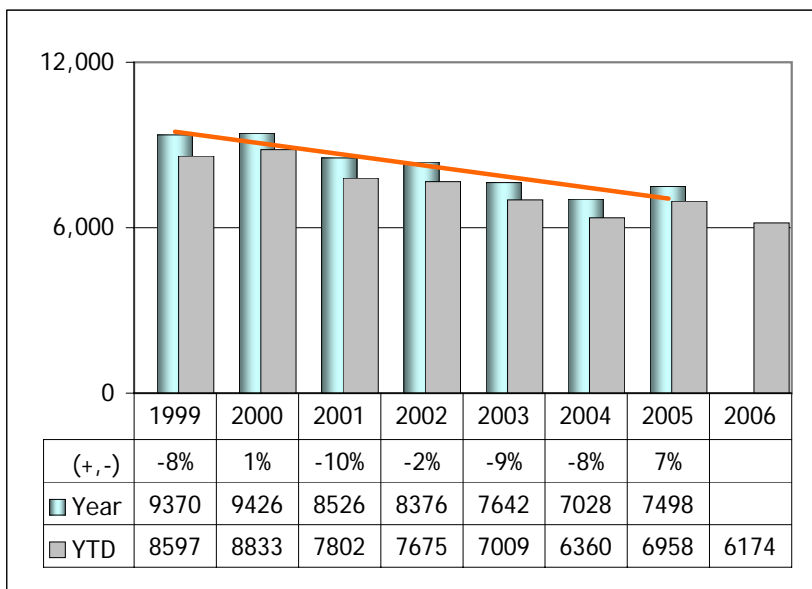
Data source: Records Dept UCR report



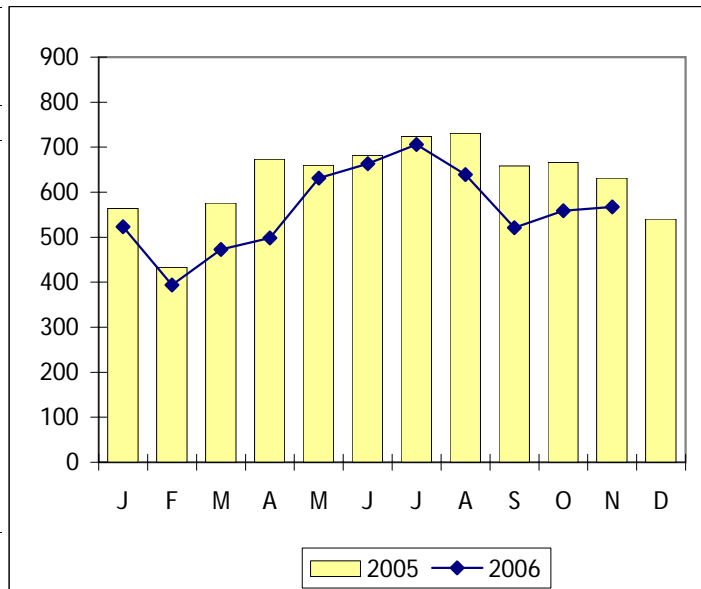
CRIMES - PROPERTY			
Arson			
	2005	2006	(+, -)
Jan	5	5	0%
Feb	6	2	-67%
Mar	3	3	0%
Apr	8	5	-38%
May	13	1	-92%
Jun	7	1	-86%
Jul	7	5	-29%
Aug	5	6	20%
Sep	6	7	17%
Oct	3	7	133%
Nov	4	5	25%
Dec	1		
YEAR	68		
YTD	67	47	-30%



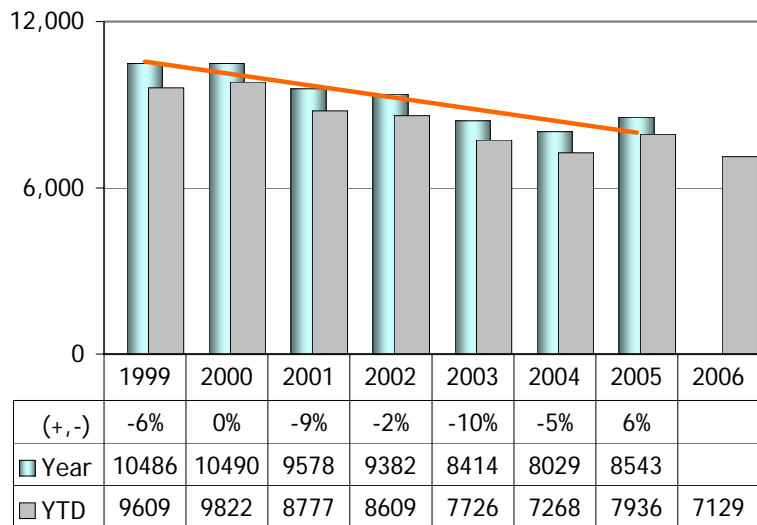
Data source: Records Dept UCR report



CRIMES - PROPERTY			
Total			
	2005	2006	(+, -)
Jan	564	523	-7%
Feb	433	394	-9%
Mar	576	473	-18%
Apr	673	498	-26%
May	660	631	-4%
Jun	682	663	-3%
Jul	724	706	-2%
Aug	731	639	-13%
Sep	658	521	-21%
Oct	666	559	-16%
Nov	631	567	-10%
Dec	540		
YEAR	7,538		
YTD	6,998	6,174	-12%

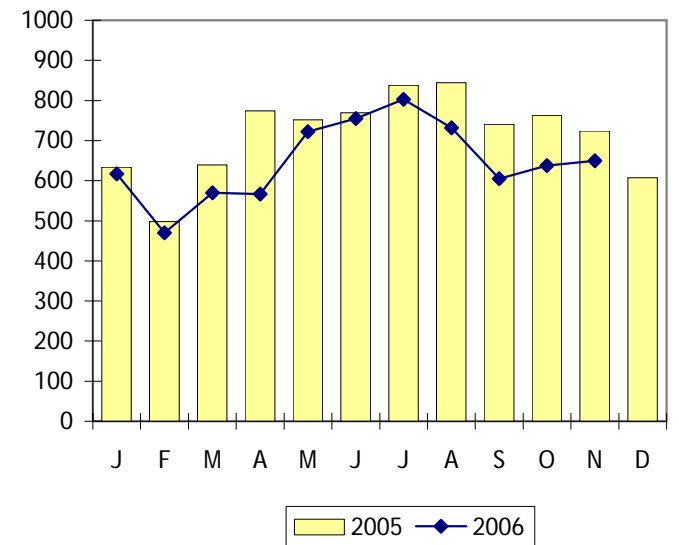


Data source: Records Dept UCR report

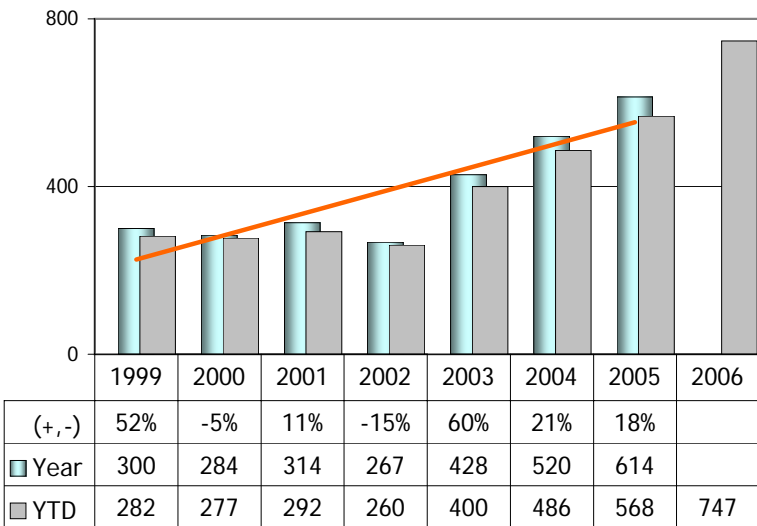


CRIMES VIOLENT & PROPERTY Total

	2005	2006	(+, -)
Jan	634	617	-3%
Feb	498	470	-6%
Mar	639	570	-11%
Apr	774	567	-27%
May	752	722	-4%
Jun	769	755	-2%
Jul	838	803	-4%
Aug	844	732	-13%
Sep	741	605	-18%
Oct	763	638	-16%
Nov	724	650	-10%
Dec	607		
YEAR	8,583		
YTD	7,976	7,129	-11%

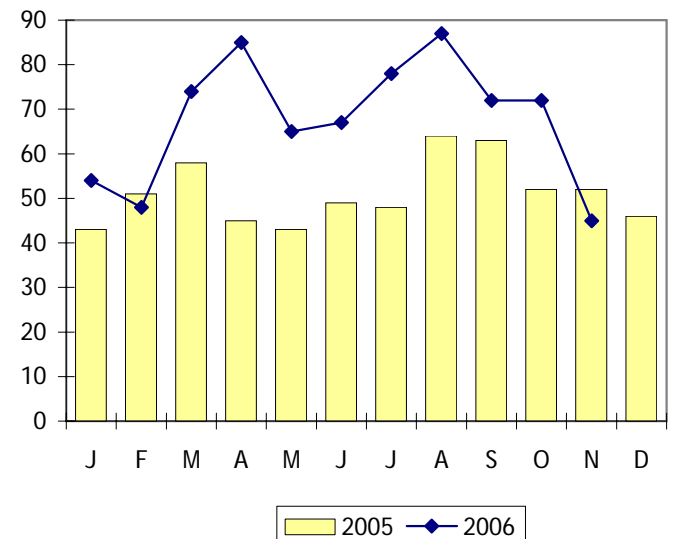


Data source: Records Dept UCR report



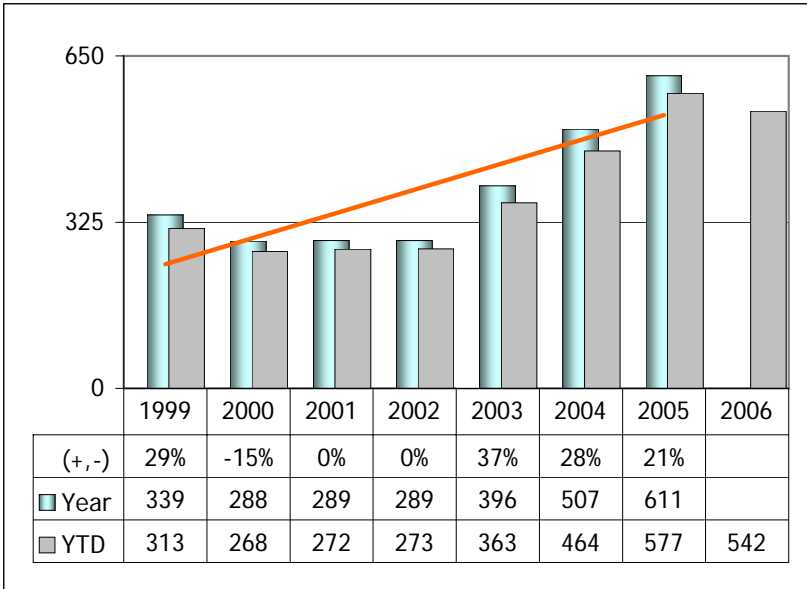
DRUG ARRESTS Cannabis

	2005	2006	(+, -)
Jan	43	54	26%
Feb	51	48	-6%
Mar	58	74	28%
Apr	45	85	89%
May	43	65	51%
Jun	49	67	37%
Jul	48	78	63%
Aug	64	87	36%
Sep	63	72	14%
Oct	52	72	38%
Nov	52	45	-13%
Dec	46		
YEAR	614		
YTD	568	747	32%



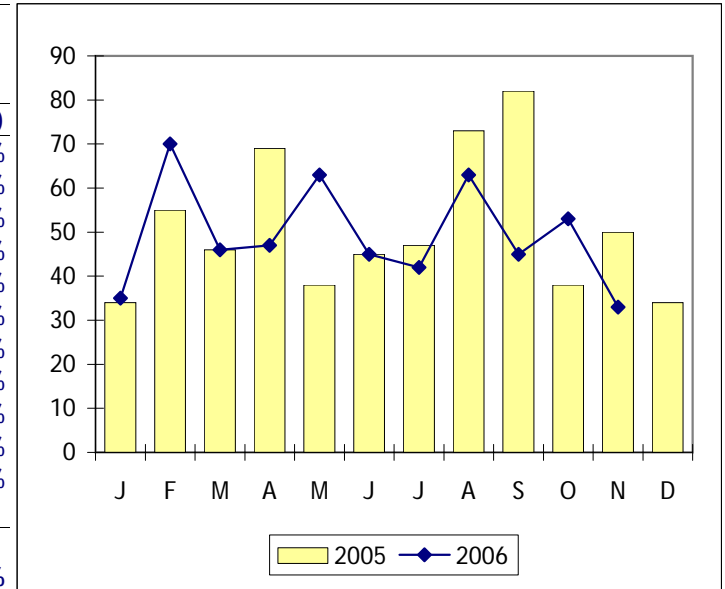
Data source: Records Dept UCR

Offenses 1811, 12, 21, 22, 30, 40, 50, 60, 1900

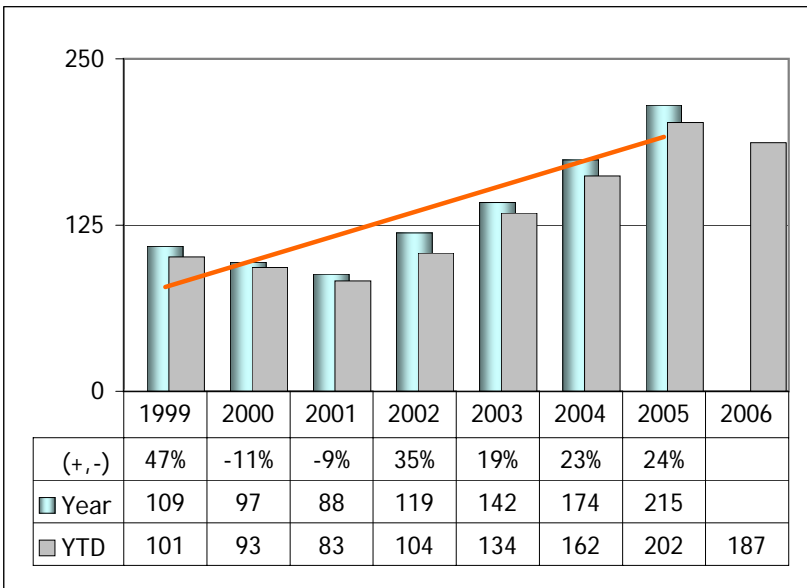


Offenses 2010, 20, 30, 40, 50, 60, 70, 80

DRUG ARRESTS			
Controlled Substances			
	2005	2006	(+, -)
Jan	34	35	3%
Feb	55	70	27%
Mar	46	46	0%
Apr	69	47	-32%
May	38	63	66%
Jun	45	45	0%
Jul	47	42	-11%
Aug	73	63	-14%
Sep	82	45	-45%
Oct	38	53	39%
Nov	50	33	-34%
Dec	34		
YEAR	611		
YTD	577	542	-6%

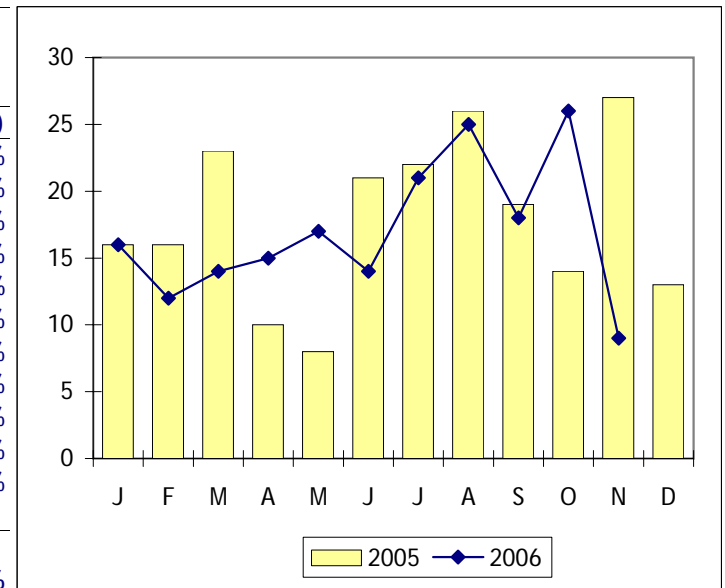


Data source: Records Dept UCR report

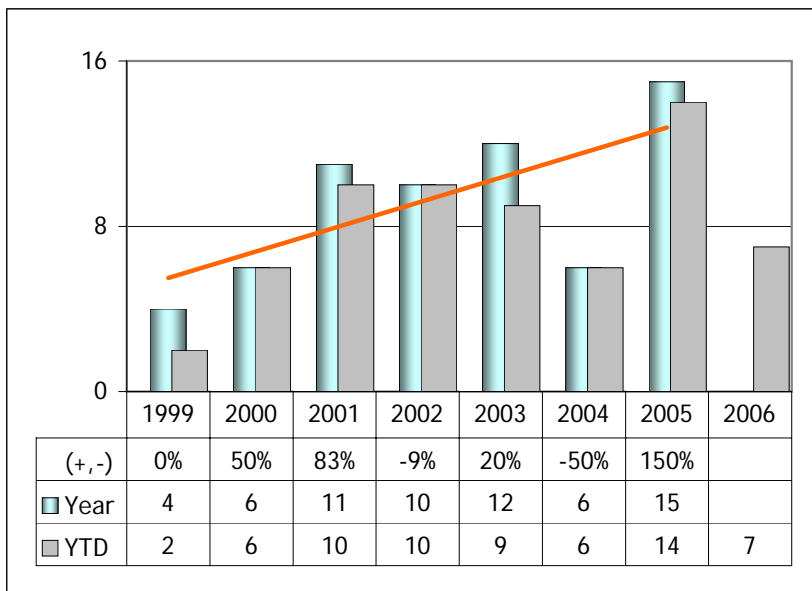


Offenses 2160, 70

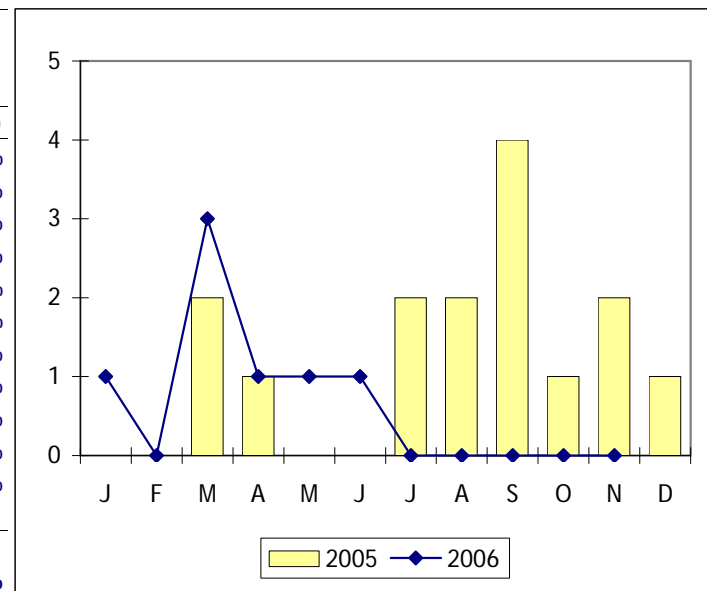
DRUG ARRESTS			
Drug Paraphernalia			
	2004	2005	(+, -)
Jan	16	16	0%
Feb	16	12	-25%
Mar	23	14	-39%
Apr	10	15	50%
May	8	17	113%
Jun	21	14	-33%
Jul	22	21	-5%
Aug	26	25	-4%
Sep	19	18	-5%
Oct	14	26	86%
Nov	27	9	-67%
Dec	13		
YEAR	215		
YTD	202	187	-7%



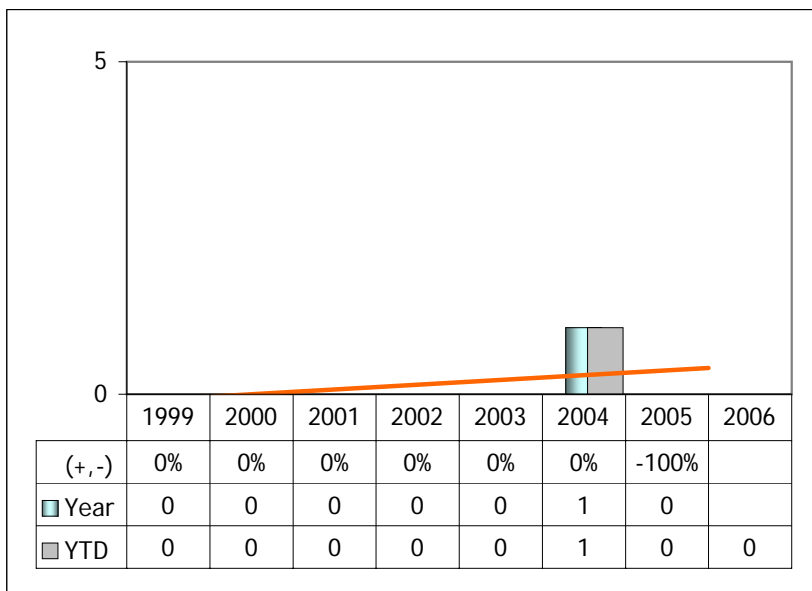
Data source: Records Dept UCR report



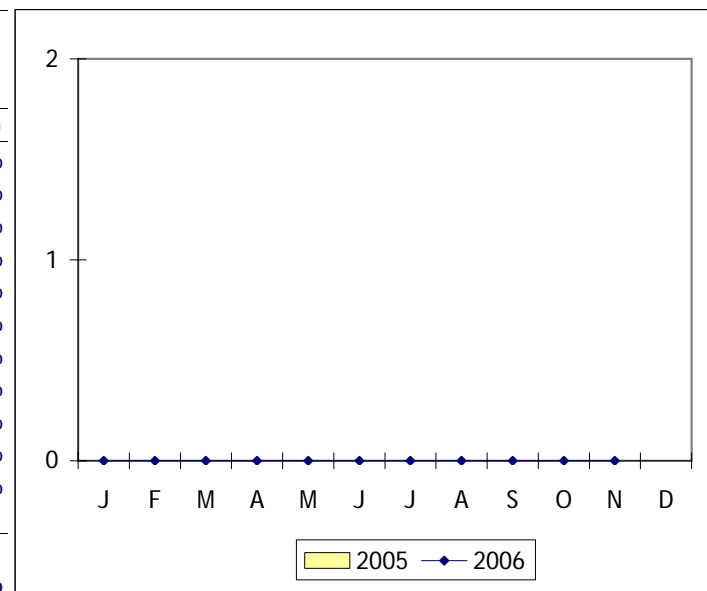
DRUG ARRESTS			
Needles & Syringes			
	2005	2006	(+, -)
Jan	0	1	100%
Feb	0	0	0%
Mar	2	3	50%
Apr	1	1	0%
May	0	1	100%
Jun	0	1	100%
Jul	2	0	-100%
Aug	2	0	-100%
Sep	4	0	-100%
Oct	1	0	-100%
Nov	2	0	-100%
Dec	1		
YEAR	15		
YTD	14	7	-50%



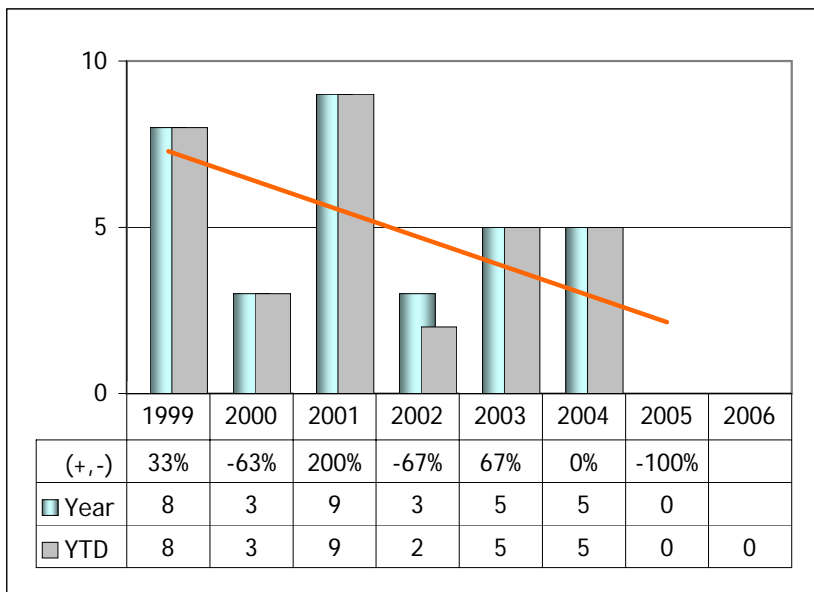
Data source: Records Dept UCR report



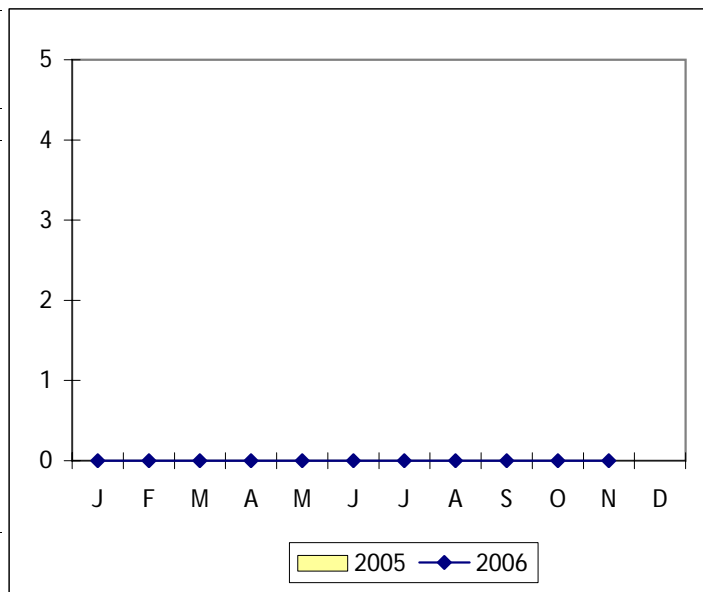
JUVENILE ARRESTS			
Murder			
	2005	2006	(+, -)
Jan	0	0	0%
Feb	0	0	0%
Mar	0	0	0%
Apr	0	0	0%
May	0	0	0%
Jun	0	0	0%
Jul	0	0	0%
Aug	0	0	0%
Sep	0	0	0%
Oct	0	0	0%
Nov	0	0	0%
Dec	0		
YEAR	0		
YTD	0	0	0%



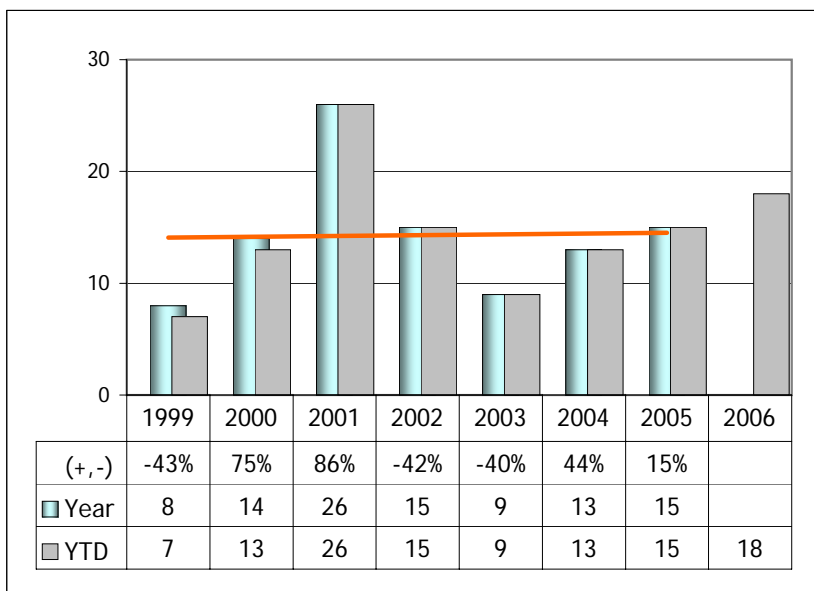
Data source: I.S. Dept / juv-part report



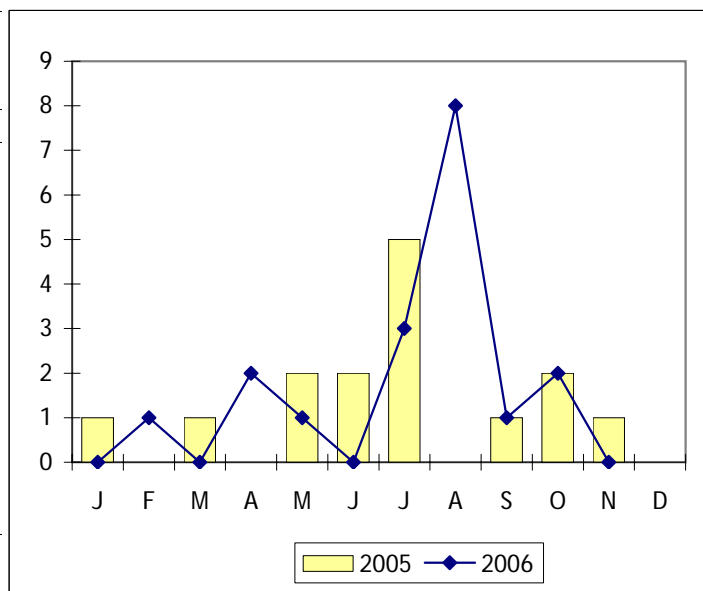
JUVENILE ARRESTS			
Criminal Sexual Assault			
	2005	2006	(+, -)
Jan	0	0	0%
Feb	0	0	0%
Mar	0	0	0%
Apr	0	0	0%
May	0	0	0%
Jun	0	0	0%
Jul	0	0	0%
Aug	0	0	0%
Sep	0	0	0%
Oct	0	0	0%
Nov	0	0	0%
Dec	0	0	0%
YEAR	0		
YTD	0	0	0%



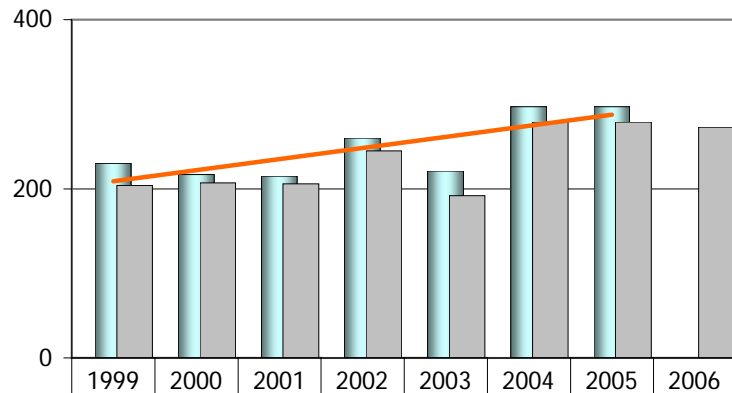
Data source: I.S. Dept / juv-part report



JUVENILE ARRESTS			
Robbery			
	2005	2006	(+, -)
Jan	1	0	-100%
Feb	0	1	100%
Mar	1	0	-100%
Apr	0	2	200%
May	2	1	-100%
Jun	2	0	-100%
Jul	5	3	-40%
Aug	0	8	800%
Sep	1	1	0%
Oct	2	2	0%
Nov	1	0	-100%
Dec	0		
YEAR	15		
YTD	15	18	20%



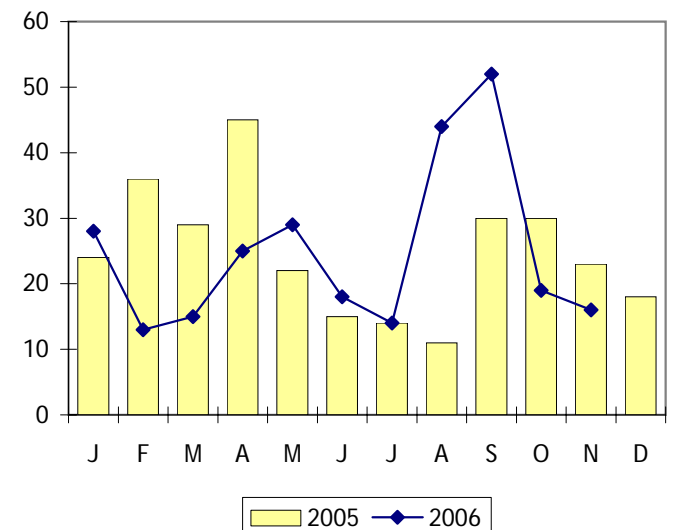
Data source: I.S. Dept / juv-part report



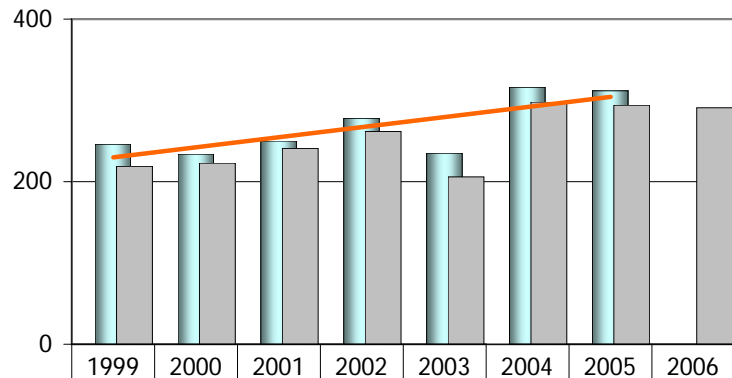
(+, -)	-3%	-6%	-1%	21%	-15%	34%	0%	
Year	230	217	215	260	221	297	297	
YTD	204	207	206	245	192	279	279	273

JUVENILE ARRESTS Aggravated Assault / Battery

	2005	2006	(+, -)
Jan	24	28	17%
Feb	36	13	-64%
Mar	29	15	-48%
Apr	45	25	-44%
May	22	29	32%
Jun	15	18	20%
Jul	14	14	0%
Aug	11	44	300%
Sep	30	52	73%
Oct	30	19	-37%
Nov	23	16	-30%
Dec	18		
YEAR	297		
YTD	279	273	-2%



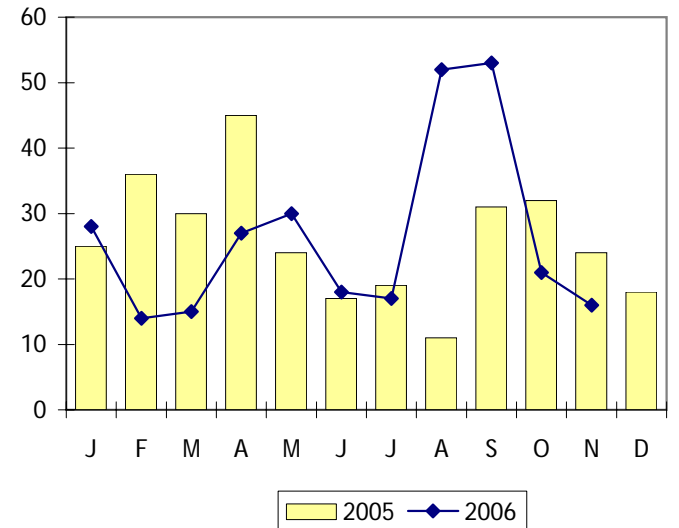
Data source: I.S. Dept / juv-part report



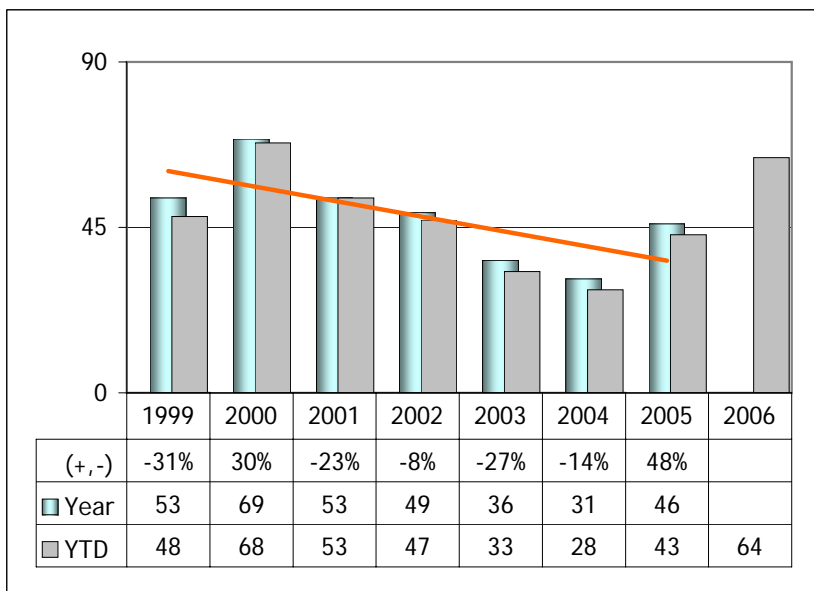
(+, -)	-5%	-5%	7%	11%	-15%	34%	-1%	
Year	246	234	250	278	235	316	312	
YTD	219	223	241	262	206	298	294	291

JUVENILE ARRESTS Violent Total

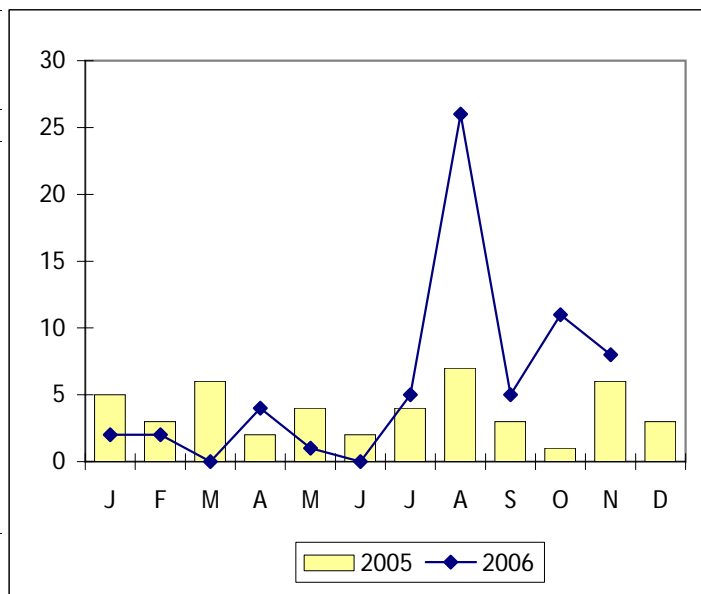
	2005	2006	(+, -)
Jan	25	28	12%
Feb	36	14	-61%
Mar	30	15	-50%
Apr	45	27	-40%
May	24	30	25%
Jun	17	18	6%
Jul	19	17	-11%
Aug	11	52	373%
Sep	31	53	71%
Oct	32	21	-34%
Nov	24	16	-33%
Dec	18		
YEAR	312		
YTD	294	291	-1%



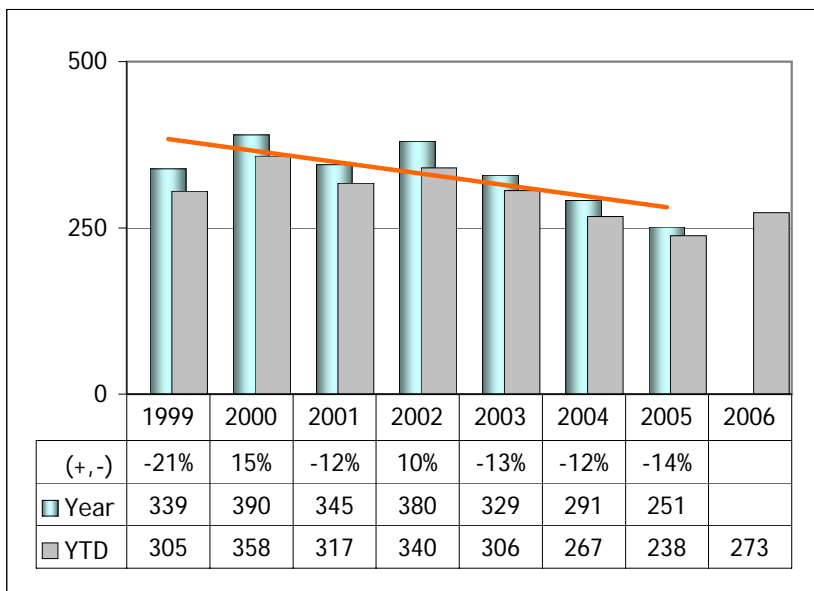
Data source: I.S. Dept / juv-part report



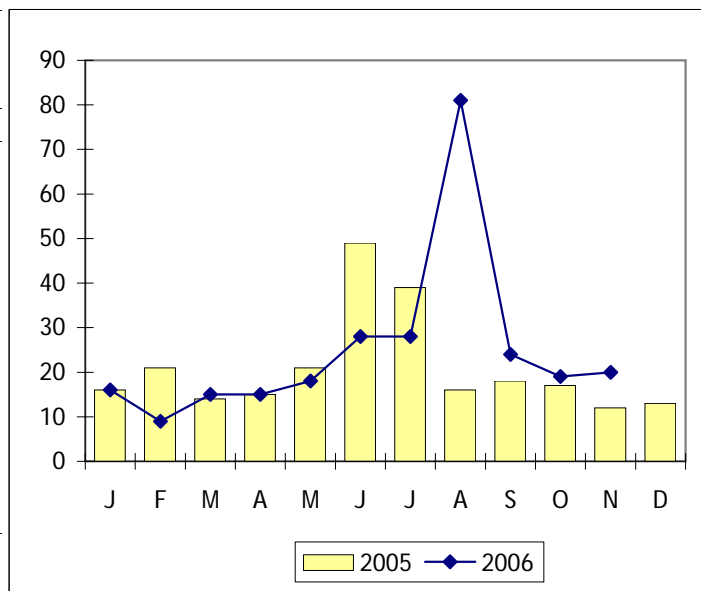
JUVENILE ARRESTS			
Burglary			
	2005	2006	(+, -)
Jan	5	2	-60%
Feb	3	2	-33%
Mar	6	0	-100%
Apr	2	4	100%
May	4	1	-75%
Jun	2	0	-100%
Jul	4	5	25%
Aug	7	26	271%
Sep	3	5	67%
Oct	1	11	1000%
Nov	6	8	33%
Dec	3		
YEAR	46		
YTD	43	64	49%



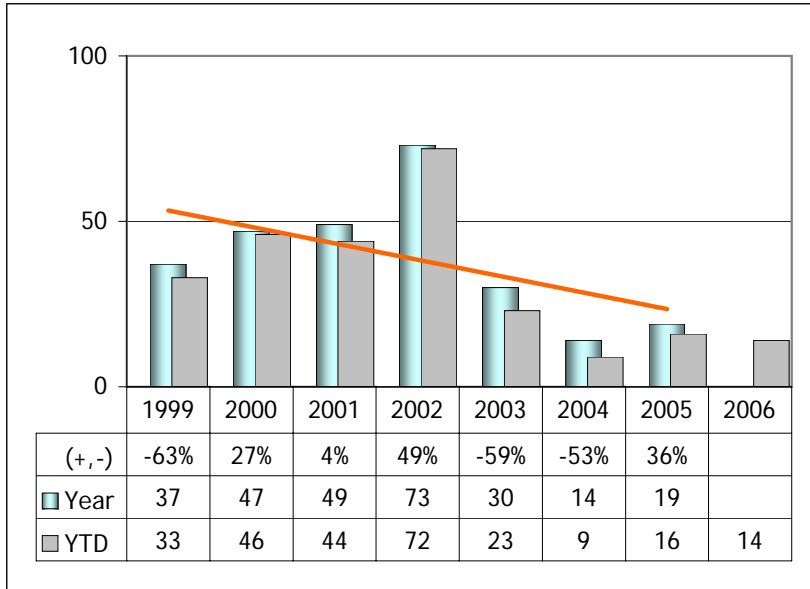
Data source: I.S. Dept / juv-part report



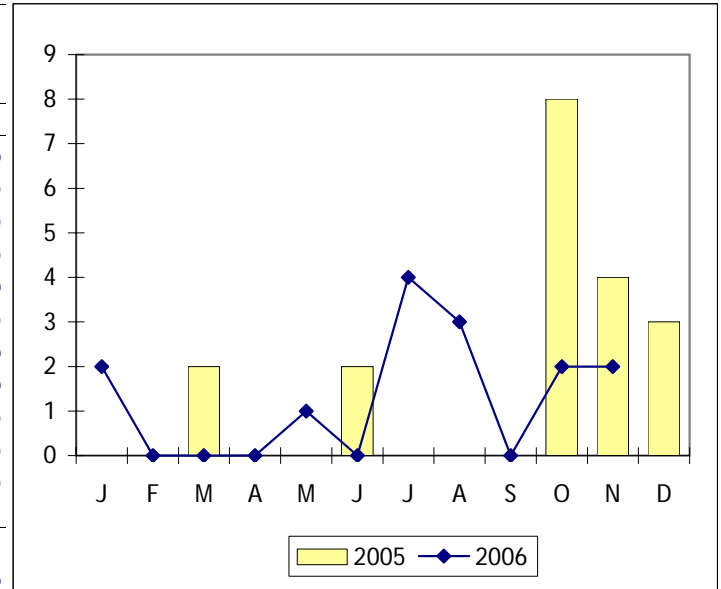
JUVENILE ARRESTS			
Theft			
	2005	2006	(+, -)
Jan	16	16	0%
Feb	21	9	-57%
Mar	14	15	7%
Apr	15	15	0%
May	21	18	-14%
Jun	49	28	-43%
Jul	39	28	-28%
Aug	16	81	406%
Sep	18	24	33%
Oct	17	19	12%
Nov	12	20	67%
Dec	13		
YEAR	251		
YTD	238	273	15%



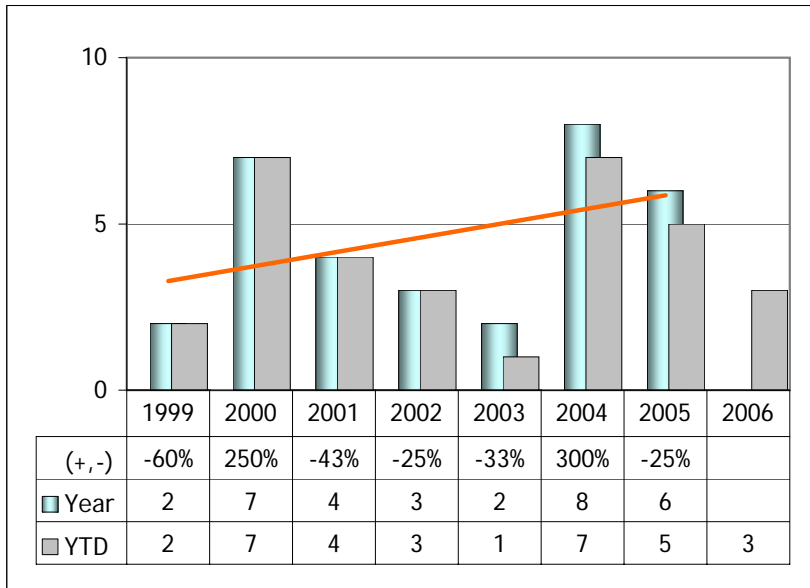
Data source: I.S. Dept / juv-part report



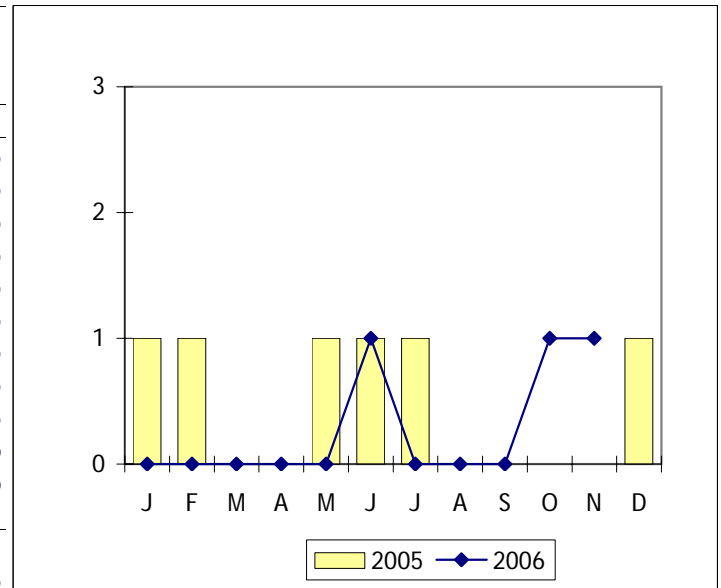
JUVENILE ARRESTS			
Motor Vehicle Theft			
	2005	2006	(+, -)
Jan	0	2	200%
Feb	0	0	0%
Mar	2	0	-100%
Apr	0	0	0%
May	0	1	100%
Jun	2	0	-100%
Jul	0	4	400%
Aug	0	3	300%
Sep	0	0	0%
Oct	8	2	-75%
Nov	4	2	-50%
Dec	3		
YEAR	19		
YTD	16	14	200%



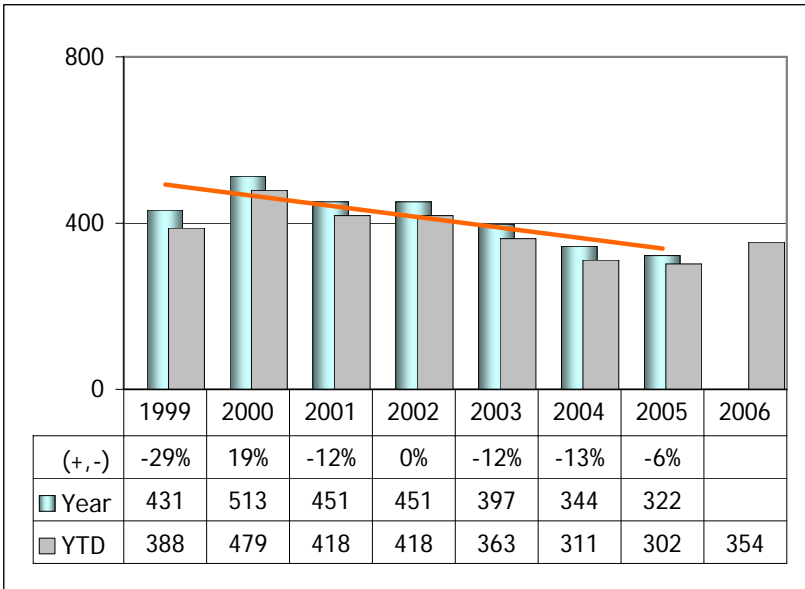
Data source: I.S. Dept / juv-part report



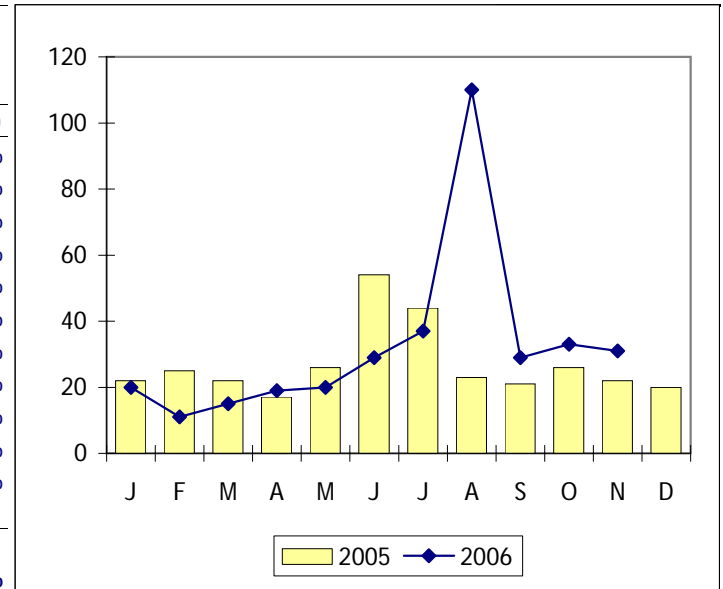
JUVENILE ARRESTS			
Arson			
	2005	2006	(+, -)
Jan	1	0	-100%
Feb	1	0	-100%
Mar	0	0	0%
Apr	0	0	0%
May	1	0	-100%
Jun	1	1	0%
Jul	1	0	-100%
Aug	0	0	0%
Sep	0	0	0%
Oct	0	1	100%
Nov	0	1	100%
Dec	1		
YEAR	6		
YTD	5	3	-40%



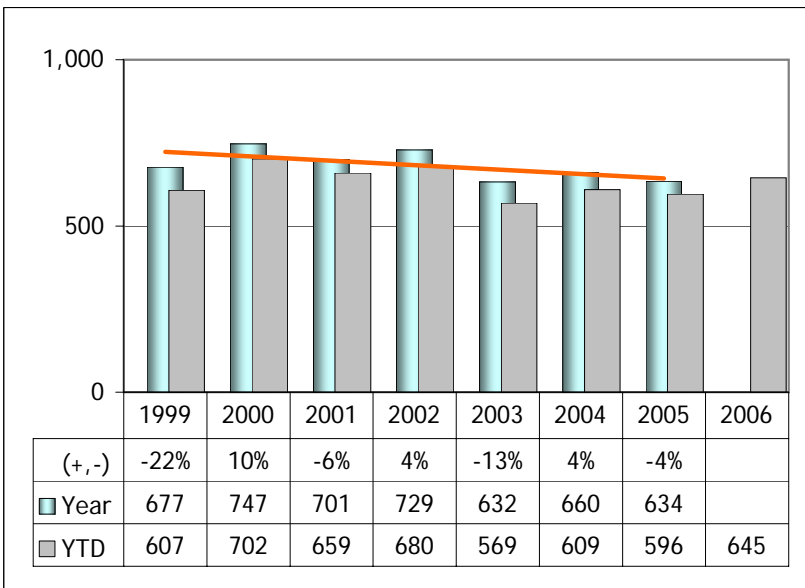
Data source: I.S. Dept / juv-part report



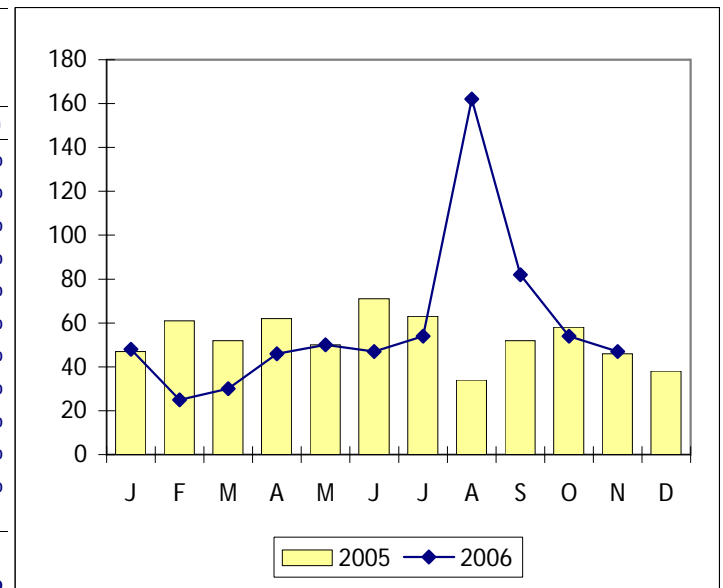
JUVENILE ARRESTS			
Property Total			
	2005	2006	(+, -)
Jan	22	20	-9%
Feb	25	11	-56%
Mar	22	15	-32%
Apr	17	19	12%
May	26	20	-23%
Jun	54	29	-46%
Jul	44	37	-16%
Aug	23	110	378%
Sep	21	29	38%
Oct	26	33	27%
Nov	22	31	41%
Dec	20		
YEAR	322		
YTD	302	354	17%



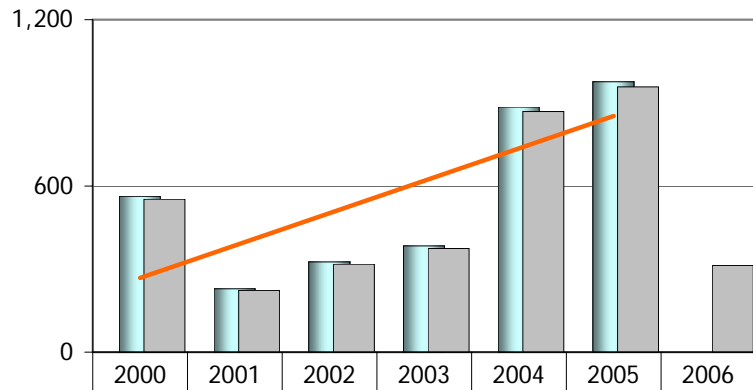
Data source: I.S. Dept / juv-part report



JUVENILE ARRESTS			
Violent and Property Total			
	2005	2006	(+, -)
Jan	47	48	2%
Feb	61	25	-59%
Mar	52	30	-42%
Apr	62	46	-26%
May	50	50	0%
Jun	71	47	-34%
Jul	63	54	-14%
Aug	34	162	376%
Sep	52	82	58%
Oct	58	54	-7%
Nov	46	47	2%
Dec	38		
YEAR	634		
YTD	596	645	8%



Data source: I.S. Dept / juv-part report



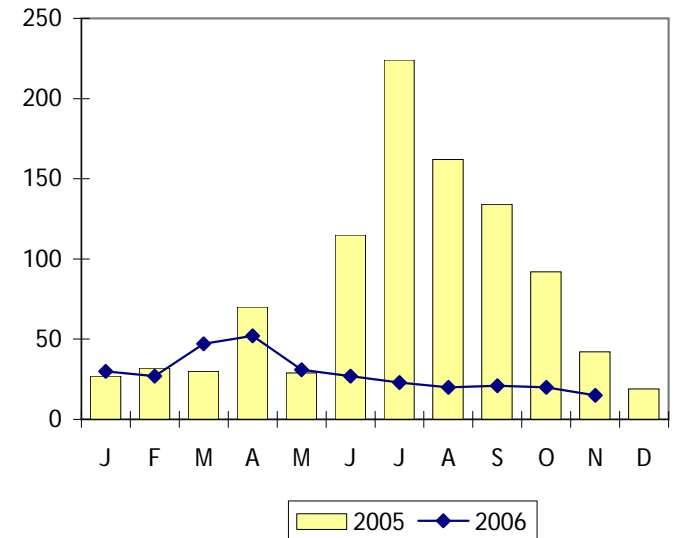
(+, -)		-59%	42%	18%	130%	10%	
Year	562	229	326	384	885	976	
YTD	552	223	318	374	868	957	313

Ordinances 15-061, 062, 063, 064, 070, 071, 074, 075, 101

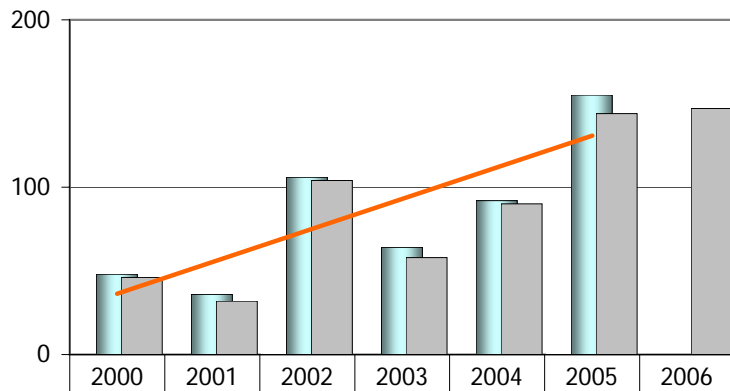
MUNICIPAL ORDINANCES

Noise

	2005	2006	(+, -)
Jan	27	30	11%
Feb	32	27	-16%
Mar	30	47	57%
Apr	70	52	-26%
May	29	31	7%
Jun	115	27	-77%
Jul	224	23	-90%
Aug	162	20	-88%
Sep	134	21	-84%
Oct	92	20	-78%
Nov	42	15	-64%
Dec	19		
YEAR	976		
YTD	957	313	-67%



Data source: Records Dept / MOVN report



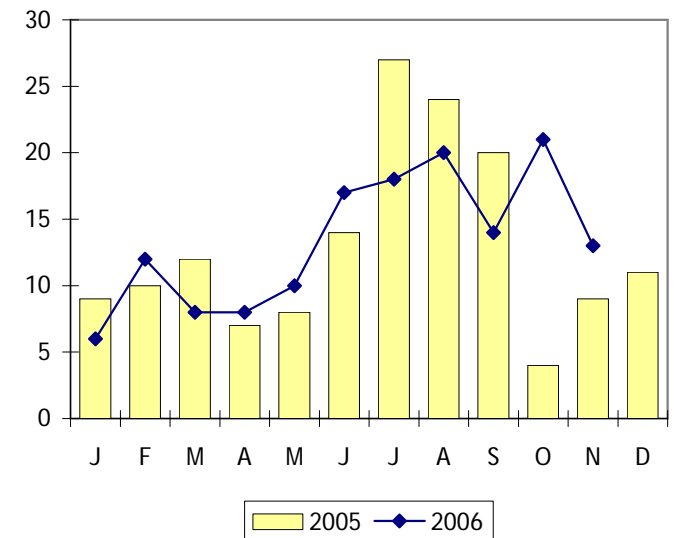
(+, -)		-25%	194%	-40%	44%	68%	
Year	48	36	106	64	92	155	
YTD	46	32	104	58	90	144	147

Ordinances 11-161, 13-003, 37, 41, 045, 046, 77, 101, 102, 15-2A9C

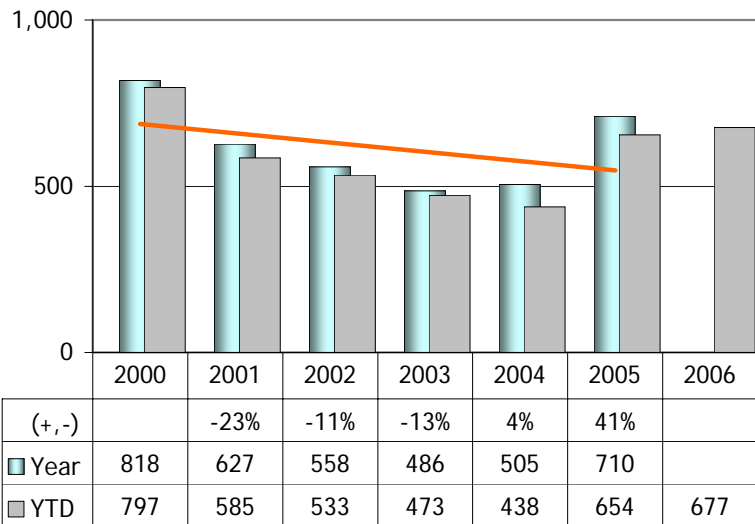
MUNICIPAL ORDINANCES

Trash and Litter

	2005	2006	(+, -)
Jan	9	6	-33%
Feb	10	12	20%
Mar	12	8	-33%
Apr	7	8	14%
May	8	10	25%
Jun	14	17	21%
Jul	27	18	-33%
Aug	24	20	-17%
Sep	20	14	-30%
Oct	4	21	425%
Nov	9	13	44%
Dec	11		
YEAR	155		
YTD	144	147	2%



Data source: Records Dept / MOVN report

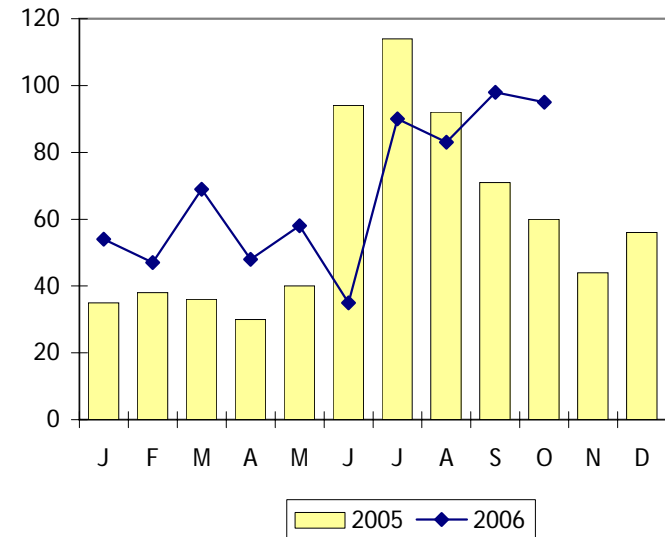


Ordinances 20-71, 72, 73, 79

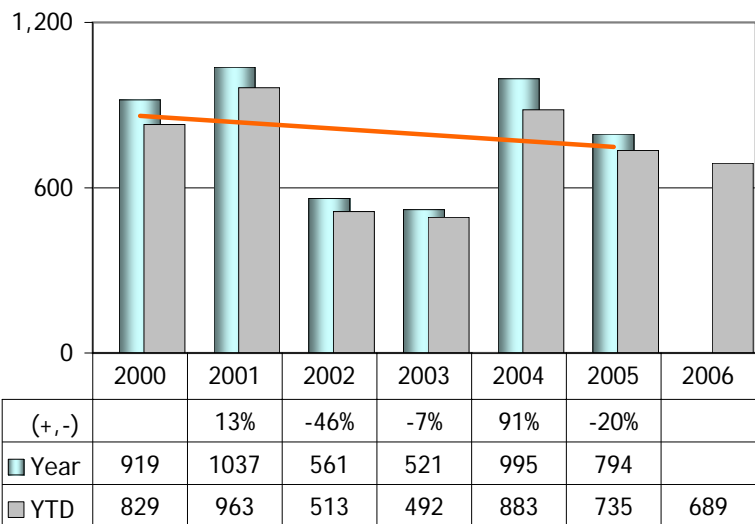
MUNICIPAL ORDINANCES

Curfew & Truancy

	2005	2006	(+, -)
Jan	35	54	54%
Feb	38	47	24%
Mar	36	69	92%
Apr	30	48	60%
May	40	58	45%
Jun	94	35	-63%
Jul	114	90	-21%
Aug	92	83	-10%
Sep	71	98	38%
Oct	60	95	58%
Nov	44		
Dec	56		
YEAR	710		
YTD	654	677	4%



Data source: Records Dept / MOVN report

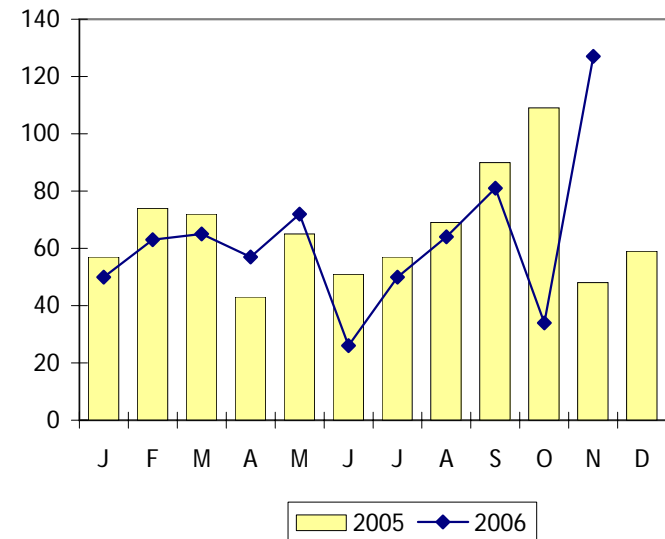


Ordinances 3-07, 08, 09, 20-104

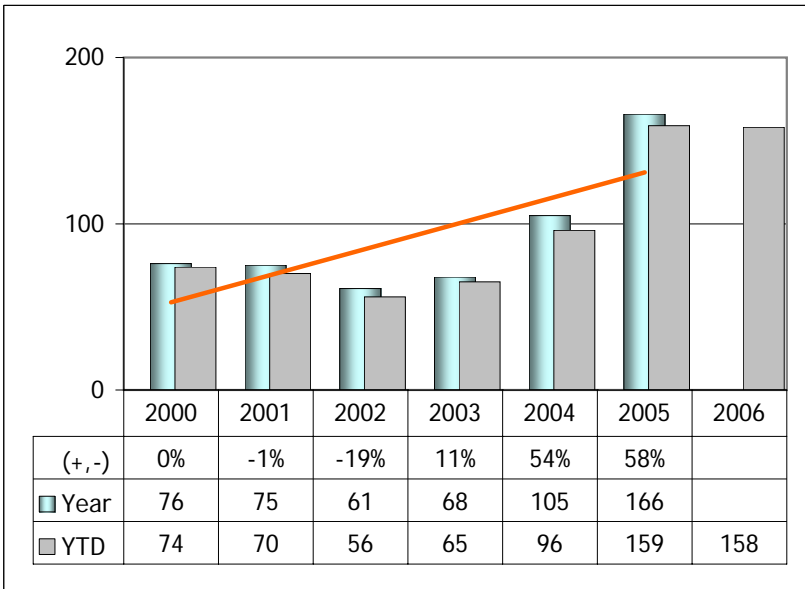
MUNICIPAL ORDINANCES

Alcohol by Minor

	2005	2006	(+, -)
Jan	57	50	-12%
Feb	74	63	-15%
Mar	72	65	-10%
Apr	43	57	33%
May	65	72	11%
Jun	51	26	-49%
Jul	57	50	-12%
Aug	69	64	-7%
Sep	90	81	-10%
Oct	109	34	-69%
Nov	48	127	165%
Dec	59		
YEAR	794		
YTD	735	689	-6%

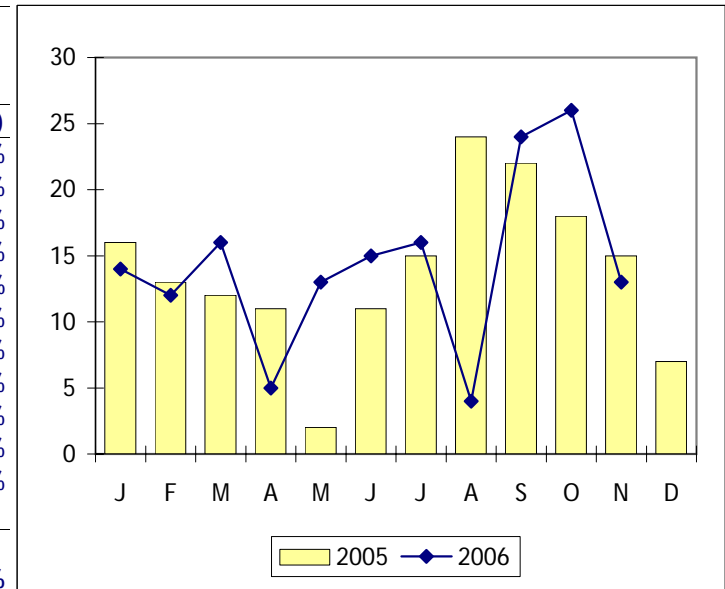


Data source: Records Dept / MOVN report

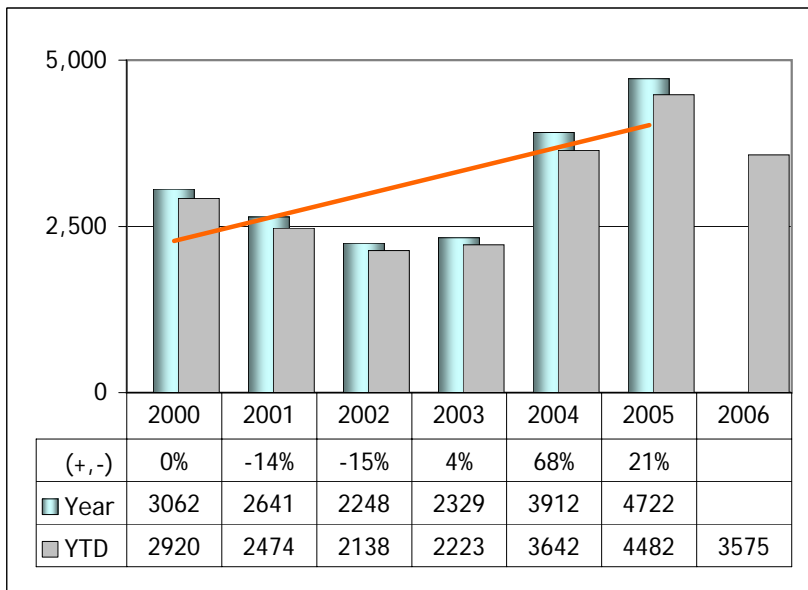


Ordinance 20-52

MUNICIPAL ORDINANCES			
Tobacco by Minor			
	2005	2006	(+, -)
Jan	16	14	-13%
Feb	13	12	-8%
Mar	12	16	33%
Apr	11	5	-55%
May	2	13	550%
Jun	11	15	36%
Jul	15	16	7%
Aug	24	4	-83%
Sep	22	24	9%
Oct	18	26	44%
Nov	15	13	-13%
Dec	7		
YEAR	166		
YTD	159	158	-1%

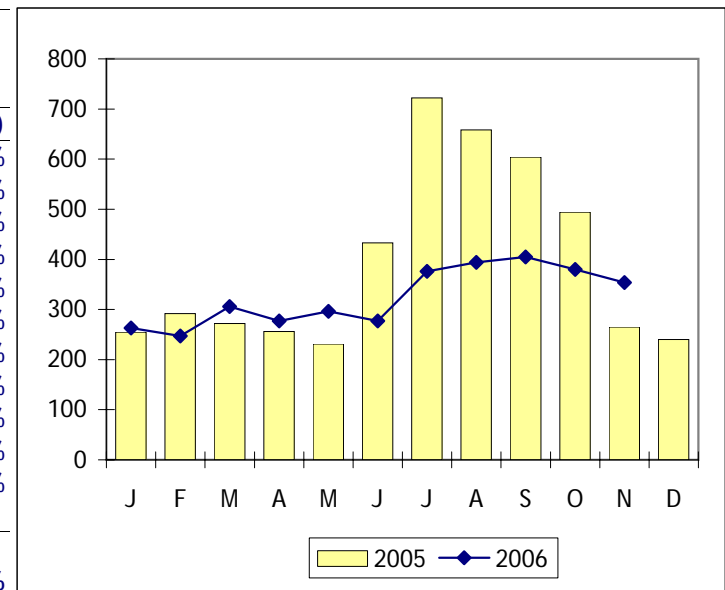


Data source: Records Dept / MOVN report



All ordinances, including truancy/curfew.

MUNICIPAL ORDINANCES			
All Violations			
	2005	2006	(+, -)
Jan	255	263	3%
Feb	292	247	-15%
Mar	272	306	13%
Apr	256	277	8%
May	231	296	28%
Jun	433	277	-36%
Jul	722	376	-48%
Aug	658	394	-40%
Sep	604	405	-33%
Oct	494	380	-23%
Nov	265	354	34%
Dec	240		
YEAR	4,722		
YTD	4,482	3,575	-20%



Data source: Records Dept / MOVN report

	MONTHLY MOVN VIOLATIONS	NOV	NOV	%	YEAR TO DATE	YEAR TO DATE	%
OFFENSE	DESCRIPTION	2005	2006	(+,-)	2005	2006	(+,-)
	ALCOHOLIC BEVERAGES						
3-03	HOURS OF SALE		4	400%	6	7	17%
3-06	FOOD OR DRINK LICENSE						
3-07	SALE TO UNDERAGE PERSONS		3	300%	6	6	0%
3-08	POSS. OR CONSUM. BY MINOR	37	117	216%	554	621	12%
3-09	UNDERAGE PERSONS ON PREMISE		1	100%	20	5	-75%
3-17	CARRYING OPEN ALCOHOL	3		-100%	20	8	-60%
3-19	IMPROPER MARKING OF DELIVERY VEHICLES						
3-21	GENERAL CONDITION OF PREMISE						
3-24	LOITERING IN LICENSED PREMISE				2	2	0%
3-27	TELEPHONE REQUIRED FOR REPORTING				10	6	-40%
3-28	ILLEGAL ACTIVITIES ON THE PREMISES		1	100%	2	7	250%
3-51	RETAIL LICENSE WHERE REQUIRED					2	200%
3-52	VIOLATION OF LICENSE RESTRICTION						
3-57	FURNISHING FALSE INFORMATION						
3-64	FAILING TO REPORT A MANAGER						
3-97A							
	ANIMAL ORDINANCES						
4-02	ANIMALS RUNNING AT LARGE		3	300%	8	10	25%
4-08	CRUELTY TO ANIMALS		1	100%	3	1	-67%
4-18	INTERFERENCE W/ ANIMAL SHELTER PERS.						
4-22	ANIMAL CONSIDERED A NUISANCE	1		-100%	7	2	-71%
4-51	INOCULATION REQUIRED						
4-54	ATTACHMENT OF REGISTRATION TAGS						
	TRASH AND LITTER						
11-161	OPEN BURNING PROHIBITED		2		10	3	-70%
13-003	LPTS WITH OCCUPANCY						
13-37	ACC. OF LITTER/ MOTOR VEHICLE PARTS				13	15	15%
13-41	LITTER ON PRIVATE PROPERTY	2	1	-50%	17	18	6%
13-045	DEPOSITING LITTER INTO PUBLIC WAYS	5	9	80%	78	84	8%
13-046	THROWING LITTER FROM VEHICLES	2	1	-50%	21	26	24%
13-77	GROWTH OF WEEDS PROHIBITED						
13-101	DECLARED NUISANCE MOTOR VEHICLES					1	100%
13-102	DAMAGED/INOPERABLE MOTOR VEHICLE				7		-100%
15-2A9C	OFF-STREET PARKING						
	NOISE						
15-061	NOISE - MUSICAL INSTRUMENTS					1	100%
15-062	NOISE - RADIOS, PHONOGRAPHS, ETC	21	12	-43%	197	126	-36%
15-063	NOISE - SOUND ADVERTISING DEVICES					3	
15-064	NOISE - IN AIR/ ON WATER						
15-70	YELLING SHOUTING ON A PUBLIC STREET	11	2	-82%	99	58	-41%
15-071	NOISE - VICINITY OF SCHOOLS OR HOSPITALS				6		-100%
15-074	NOISE - TRANSPORTATION RAILS / PILLARS						
15-75	NOISE - LOUD MUSIC ON PUBLIC WAY	10	1	-90%	654	121	-81%
15-101	ENUMERATION OF PARTICULAR NUISANCES						
	LICENSING						
18-27	LICENSE REQUIRED						
18-206	DANCE HALL LICENSE REQUIRED						
18-266	MASSAGE EST. PERMIT REQUIRED						
18-357	PEDDLERS RESTRICTIONS				1		-100%
18-376	PEDDLERS LICENSE REQUIRED				27	13	-52%
18-380	PEDDLERS LICENSE POSS. / DISPLAYED						
18-471	SECOND HAND DEALER LICENSE REQUIRED						

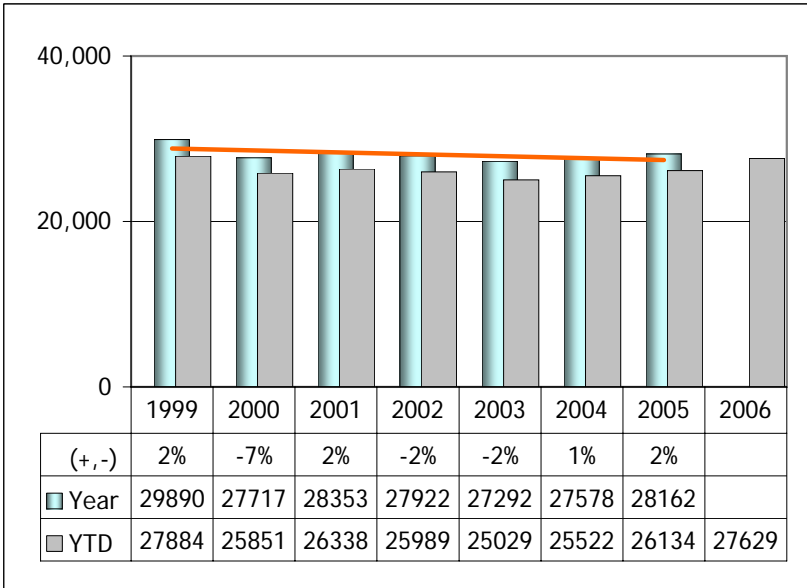
	MONTHLY MOVN VIOLATIONS	NOV	NOV	%	YEAR TO DATE	YEAR TO DATE	%
OFFENSE	DESCRIPTION	2005	2006	(+,-)	2005	2006	(+,-)
	CIGARETTE SALES						
18-592	CIGARETTE SALES TO MINORS	4	10	150%	30	51	70%
18-611	CIGARETTE LICENSE REQUIRED				4		-100%
18-619	SALE OF SINGLE CIGARETTE PROHIBITED				3	3	0%
20-001	STATE MIS. LAWS ADOPTED BY REFERENCE	5	10	100%	125	95	-24%
20-002	STATE LAW PRINCIPLES CRIMINAL LIABILITY						
	TOBACCO						
20-52	POSSESSION OF TOBACCO BY MINORS	15	13	-13%	159	175	10%
	CURFEW						
20-71	MINORS CURFEW: VIOLATION TO MINOR	31	26	-16%	478	397	-17%
20-72	MINORS CURFEW: PUBLIC ESTABLISHMENT					1	100%
20-73	CURFEW - DAYTIME	7	6	-14%	64	99	55%
20-79	TRUANCY	6	43	617%	112	255	128%
	DISORDERLY						
20-91	DISORDERLY CONDUCT	30	18	-40%	369	279	-24%
20-92	DISORDERLY HOUSES	4	5	25%	84	65	-23%
20-96	OBSTRUCTING A PUBLIC WAY	5	5	0%	245	204	-17%
20-97	PICKETING REGULATIONS						
20-98	THROWING MISSILES, ETC. PROHIBITED		1	100%	15	14	-7%
20-99	ILLEGAL POSS./ COMSUMP. IN PUBLIC PLACE	23	15	-35%	305	238	-22%
20-100	SPITTING	3	5	67%	56	36	-36%
	PUBLIC NUISANCES						
2701.1	SALE/DISCHARGE OF FIREWORKS				38	25	-34%
20-103	OPERATION OF SKATEBOARDS PROHIBITED				2	4	100%
20-104	PRESENCE OF MINORS POSS/CON ALCOHOL	8	6	-25%	152	57	-63%
20-105	SOLICITATION TO COMMIT PROSTITUTION	1		-100%	13	2	-85%
20-106	USE OF VEHICLE IN POSSESSION OF NARCOTICS				2		-100%
20-108	PANHANDLING	5	4	-20%	41	53	29%
20-121	PUBLIC INDECENCY	7	12	71%	120	155	29%
20-141	GAMBLING	5	3	-40%	21	16	-24%
20-192	GRAFFITI - DEFAACEMENT OF PROPERTY				2	4	100%
20-200	CHRONIC PUBLIC NUISANCE				8	1	-88%
20-220	GANG LOITERING						
20-221	NARCOTICS LOITERING				10	2	-80%
	WEAPONS						
20-161	WEAPONS - DISCHARGE PROHIBITED	1			5	3	-40%
20-161A	DISCHARGING FIREARM IN THE CITY						
20-188	CARRYING CONCEALED WEAPON PROHIBITED				4	1	-75%
	OTHER						
27-149	LICENCE REQUIRED, HOTEL/MOTEL						
28-227	WALKING/PLAYING ON THE HIGHWAY	6	4	-33%	92	85	-8%
28-496	BICYCLE LAMPS & OTHER EQUIPMENT REQ'D	7	7	0%	124	98	-21%
30-71	TAXICABS OWNER'S LICENSE REQUIRED					1	100%
5-18	OCCUPANCY OF UNINHABITABAL BLDG		2	200%	8	2	-75%
5-406	OCCUPYING PLACARDED STRUCTURE					1	100%
	OTHER/ UNKNOWN		1	100%	23	7	-70%
	TOTALS	265	354	34%	4482	3575	-20%

MOVNS - QUALITY OF LIFE

2006																
		JAN	FEB	MAR	APR	MAY	JUN	JUL	AUG	SEP	OCT	NOV	DEC	YTD	% (+, -)	
ALCOHOLIC BEVERAGES																
3-17	CARRYING OPEN ALCOHOL	1	1			1		2	2		1	0		8	-60%	
TRASH AND LITTER																
13-41	LITTER ON PRIVATE PROPERTY		2			3	5	2	4		1	1		18	6%	
13-045	DEPOSITING LITTER INTO PUBLIC WAYS	5	7	6	5	3	7	9	8	12	13	9		84	8%	
13-046	THROWING LITTER FROM VEHICLES	1	2		2	4	1	4	5	2	4	1		26	24%	
13-102	DAMAGED/INOPERABLE MOTOR VEHICLE											0		0		
NOISE																
15-062	NOISE - RADIOS, PHONOGRAPHS, ETC	13	12	13	13	10	13	12	10	6	12	12		126	-36%	
15-70	YELLING SHOUTING ON A PUBLIC STREET	7	3	4	6	3	6	5	8	9	5	2		58	-41%	
15-071	NOISE - VICINITY OF SCHOOLS											0		0		
15-75	NOISE - LOUD MUSIC ON PUBLIC WAY	10	12	24	33	17	8	6	1	6	3	1		121	-81%	
CURFEW																
20-71	MINORS CURFEW: VIOLATION TO MINOR	16	20	17	17	21	31	90	77	50	32	26		397	-17%	
20-73	CURFEW - DAYTIME	10	9	8	11	17	4		3	20	11	6		99	55%	
20-79	TRUANCY	28	18	44	20	20			3	28	51	43		255	128%	
DISORDERLY																
20-91	DISORDERLY CONDUCT	29	22	21	18	21	35	33	33	27	22	18		279	-24%	
20-92	DISORDERLY HOUSES	6	3	3	3	4	12	7	8	5	9	5		65	-23%	
20-96	OBSTRUCTING A PUBLIC WAY	6	10	18	14	23	21	25	21	34	27	5		204	-17%	
20-99	ILLEGAL POSS./ COMSUMP. IN PUBLIC PLACE	21	18	12	26	25	24	25	30	21	21	15		238	-22%	
20-100	SPITTING	1	1	3	4	1	4	3	6	2	6	5		36	-36%	
PUBLIC NUISANCES																
20-105	SOLICITATION TO COMMIT PROSTITUTION	2										0		2	-85%	
20-108	PANHANDLING		2	7	4	9	3	4	16	2	2	4		53	29%	
20-121	PUBLIC INDECENCY	11	12	18	19	7	14	10	26	6	20	12		155	29%	
20-141	GAMBLING					2		3		8		3		16	-24%	
20-200	CHRONIC PUBLIC NUISANCE								1			0		1	-88%	
20-221	NARCOTICS LOITERING	2										0		2	-80%	
OTHER																
28-11 / 227	WALKING /PLAYING ON THE HIGHWAY	2	6	8	4	4	5	13	13	7	19	4		85	-8%	
QOL MOVN TOTAL		171	160	206	199	195	193	253	275	245	259	172		2328	-25%	
2005 INCREASE / DECREASE		20	-4	45	22	48	-137	-311	-213	-188	-56	-15		-789		
2005 % CHANGE		13%	-2%	28%	12%	33%	-42%	-55%	-44%	-43%	-18%	-8%		-25%		

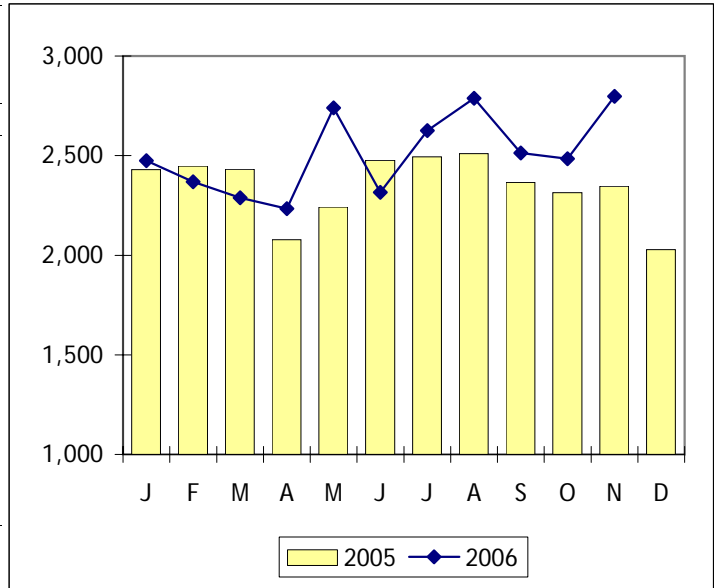
MOVNS - QUALITY OF LIFE

2005															
		JAN	FEB	MAR	APR	MAY	JUN	JUL	AUG	SEP	OCT	NOV	DEC	YTD	
ALCOHOLIC BEVERAGES															
3-17	CARRYING OPEN ALCOHOL	1	1	1	1	1	3	4	3	1	1	3		20	
TRASH AND LITTER															
13-41	LITTER ON PRIVATE PROPERTY	2			2	4	1	2	2	2		2		17	
13-045	DEPOSITING LITTER INTO PUBLIC WAYS	2	4	6	6	3	5	16	16	11	4	5		78	
13-046	THROWING LITTER FROM VEHICLES	1	1	3			3	4	2	5		2		21	
13-102	DAMAGED/INOPERABLE MOTOR VEHICLE	3	3	1								0		7	
NOISE															
15-062	NOISE - RADIOS, PHONOGRAPHS, ETC	15	12	8	18	4	11	45	26	22	15	21		197	
15-70	YELLING SHOUTING ON A PUBLIC STREET	2	1	4	15	10	5	9	15	10	17	11		99	
15-071	NOISE - VICINITY OF SCHOOLS OR HOSPITALS		5	1								0		6	
15-75	NOISE - LOUD MUSIC ON PUBLIC WAY	10	14	17	37	15	99	170	121	102	59	10		654	
CURFEW															
20-71	MINORS CURFEW: VIOLATION TO MINOR	9	11	18	18	19	93	114	83	43	39	31		478	
20-73	CURFEW - DAYTIME	8	11	5	11	10	1		1	4	6	7		64	
20-79	TRUANCY	18	16	13	1	11			8	24	15	6		112	
DISORDERLY															
20-91	DISORDERLY CONDUCT	27	36	39	15	24	14	38	48	53	45	30		369	
20-92	DISORDERLY HOUSES	1		4	9	10	6	13	12	20	5	4		84	
20-96	OBSTRUCTING A PUBLIC WAY	18	7	11	13	11	30	37	52	34	27	5		245	
20-99	ILLEGAL POSS./ COMSUMP. IN PUBLIC PLACE	7	17	13	9	11	32	57	50	56	30	23		305	
20-100	SPITTING	5	8	2	4	1	4	7	12	6	4	3		56	
PUBLIC NUISANCES															
20-105	SOLICITATION TO COMMIT PROSTITUTION						1	3	3	4	1	1		13	
20-108	PANHANDLING	4	2	1	4	1	6	7	4	1	6	5		41	
20-121	PUBLIC INDECENCY	6	3	7	6	6	6	23	14	28	14	7		120	
20-141	GAMBLING							2	2		12	5		21	
20-200	CHRONIC PUBLIC NUISANCE			2	2		2		2			0		8	
20-221	NARCOTICS LOITERING	8					1	1				0		10	
OTHER															
28-227	WALKING /PLAYING ON THE HIGHWAY	4	12	5	6	6	7	12	12	7	15	6		92	
QOL MOVN TOTAL															
		151	164	161	177	147	330	564	488	433	315	187		3117	

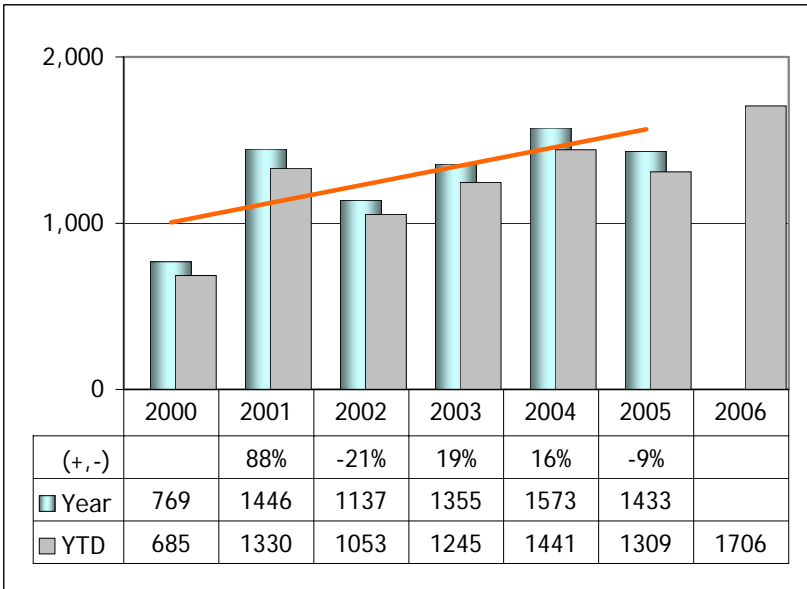


Does not include "Withdraw if Repaired" tickets

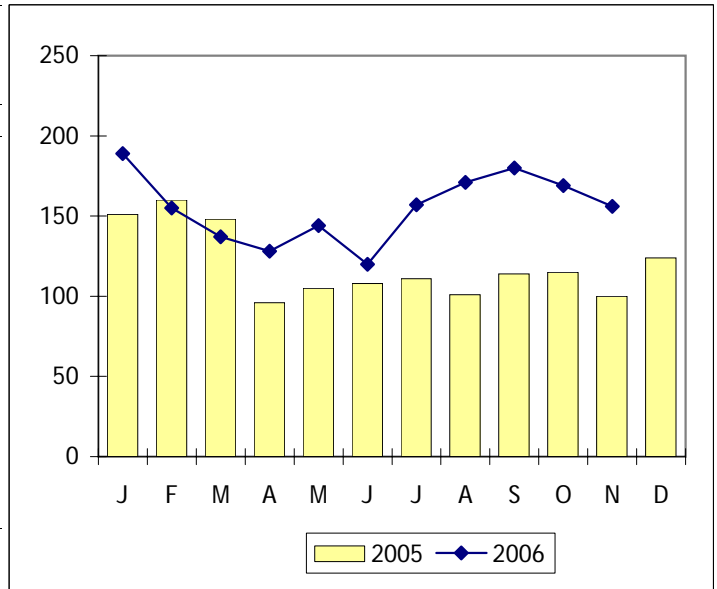
TRAFFIC Tickets			
	2005	2006	(+, -)
Jan	2430	2474	2%
Feb	2448	2368	-3%
Mar	2432	2288	-6%
Apr	2078	2234	8%
May	2241	2739	22%
Jun	2476	2316	-6%
Jul	2494	2626	5%
Aug	2510	2788	11%
Sep	2365	2514	6%
Oct	2314	2484	7%
Nov	2346	2798	19%
Dec	2028		
YEAR	28,162		
YTD	26,134	27,629	6%



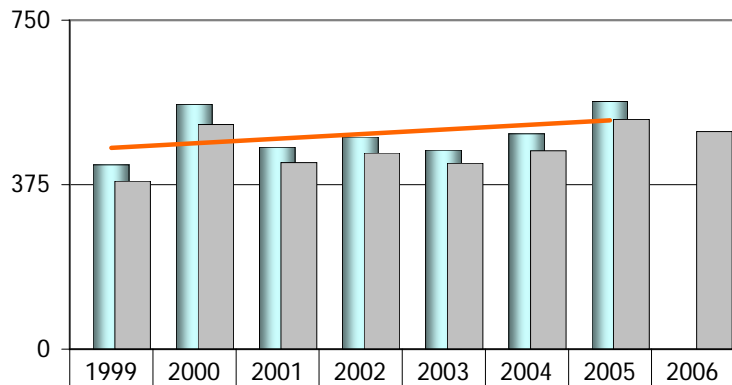
Data source: I.S. Dept / tcc-tally report



TRAFFIC Withdraw if Repaired Tickets			
	2005	2006	(+, -)
Jan	151	189	25%
Feb	160	155	-3%
Mar	148	137	-7%
Apr	96	128	33%
May	105	144	37%
Jun	108	120	11%
Jul	111	157	41%
Aug	101	171	69%
Sep	114	180	58%
Oct	115	169	47%
Nov	100	156	56%
Dec	124		
YEAR	1,433		
YTD	1,309	1,706	30%



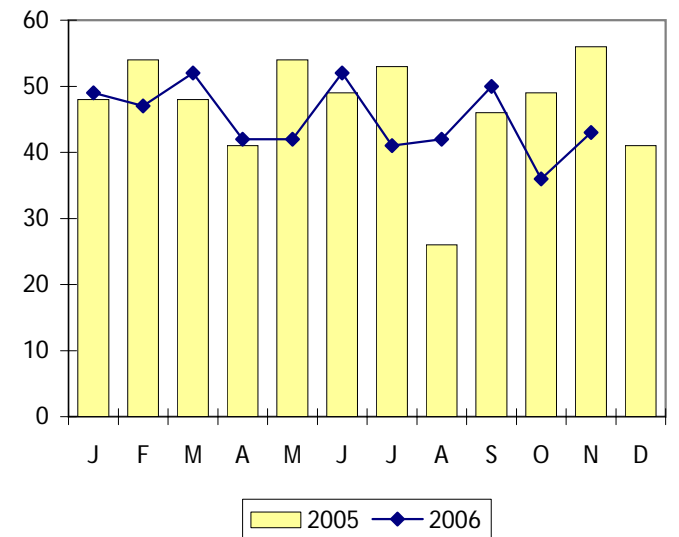
Data source: I.S. Dept / tcc-tally report



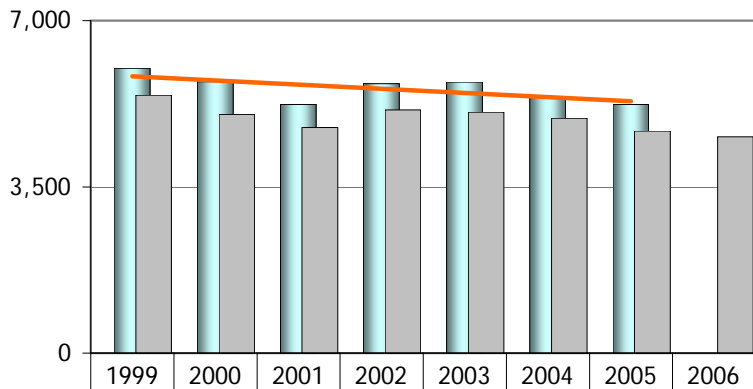
(+, -)	-21%	33%	-18%	5%	-6%	8%	15%	
Year	420	558	460	484	454	491	565	
YTD	383	512	425	447	424	452	524	496

TRAFFIC D.U.I. Arrests

	2005	2006	(+, -)
Jan	48	49	2%
Feb	54	47	-13%
Mar	48	52	8%
Apr	41	42	2%
May	54	42	-22%
Jun	49	52	6%
Jul	53	41	-23%
Aug	26	42	62%
Sep	46	50	9%
Oct	49	36	-27%
Nov	56	43	-23%
Dec	41		
YEAR	565		
YTD	524	496	-5%



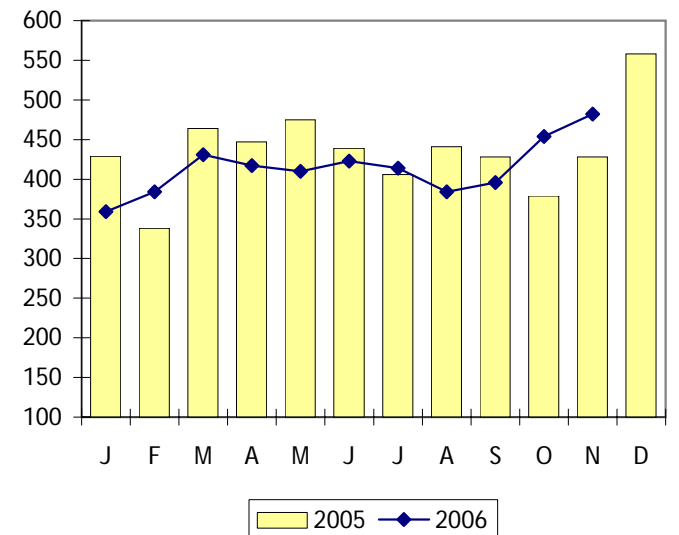
Data Source: I.S. Dept / dui-ppd.report



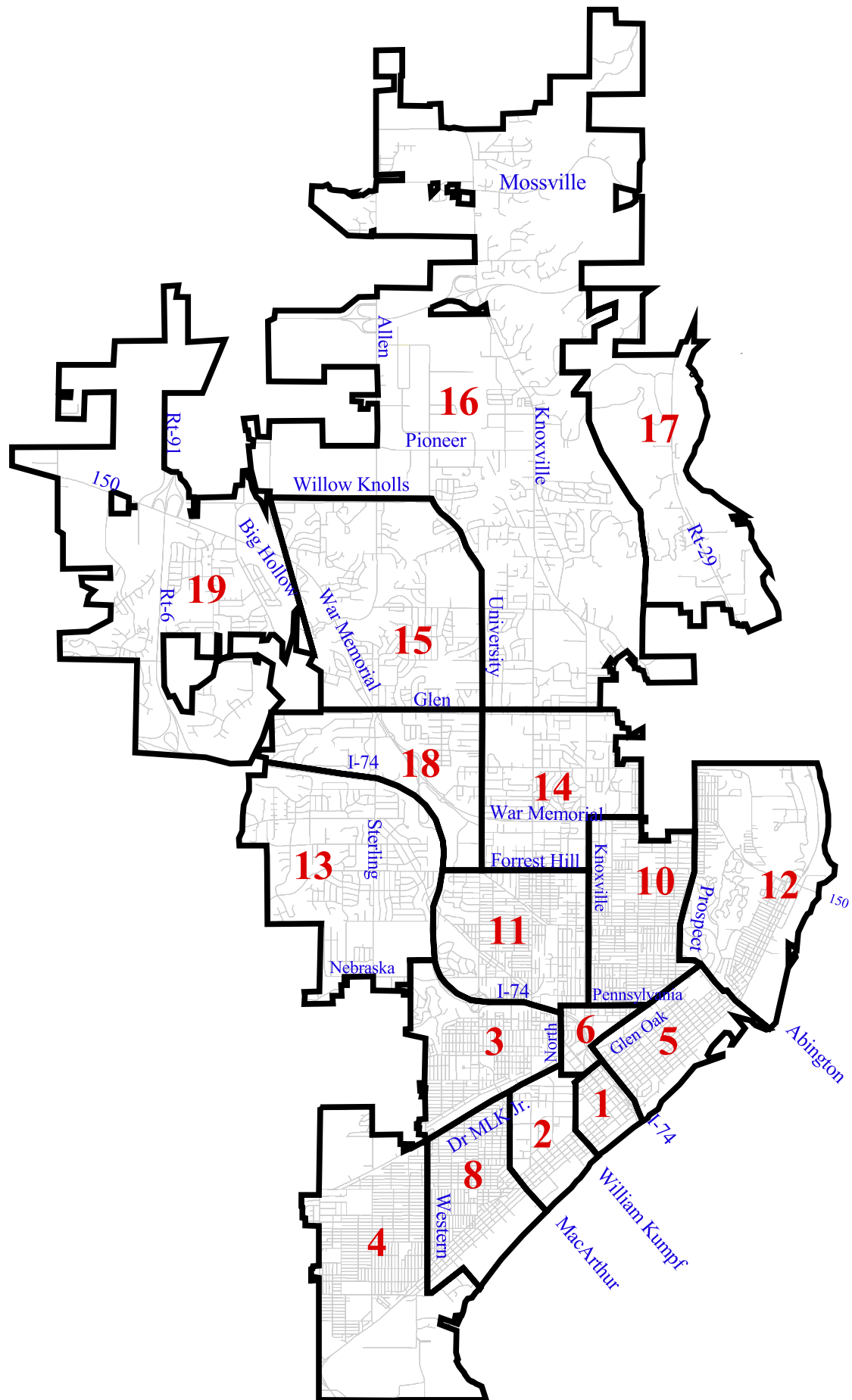
(+, -)	2%	-5%	-8%	8%	1%	-5%	-3%	
Year	5998	5715	5235	5675	5709	5403	5232	
YTD	5429	5027	4752	5118	5074	4944	4674	4554

TRAFFIC Accidents

	2005	2006	(+, -)
Jan	429	359	-16%
Feb	338	384	14%
Mar	464	431	-7%
Apr	447	417	-7%
May	475	410	-14%
Jun	439	423	-4%
Jul	406	414	2%
Aug	441	384	-13%
Sep	428	396	-7%
Oct	379	454	20%
Nov	428	482	13%
Dec	558		
YEAR	5,232		
YTD	4,674	4,554	-3%



Data source: I.S. Dept / accident.ppd.report



Square Miles		Dispatched Calls			Case Numbers Assigned		
2006	Police District	November		Police District	November		Police District
		2005	2006		2005	2006	
0.3	1	250	280	1	83	87	1
0.3	6	370	410	2	106	117	2
0.7	2	387	446	3	127	154	3
1.1	5	934	877	4	249	211	4
1.4	3	427	472	5	94	118	5
1.4	8	157	187	6	56	71	6
1.6	10	599	563	8	164	171	8
1.7	18	774	789	10	220	247	10
1.8	11	541	541	11	150	141	11
2.0	14	365	358	12	127	110	12
2.6	12	459	457	13	131	136	13
2.9	17	228	285	14	74	118	14
3.0	13	201	206	15	70	79	15
3.2	4	506	472	16	153	154	16
3.4	15	18	19	17	9	11	17
5.6	19	300	308	18	117	112	18
11.9	16	269	284	19	97	75	19
		6,785	6,954		2,027	2,112	

Data source: IS Dept / kad0m16 report

DISTRICT PART I CRIMES (1-6)

November 2006

Districts		1			2			3			4			5			6		
		2005	2006	%	2005	2006	%	2005	2006	%	2005	2006	%	2005	2006	%	2005	2006	%
Murder	Month	0	0	0	0	0	0	0	0	0	0	1	100	0	0	0	0	0	0
	YTD	1	0	-100	1	0	-100	1	2	100	5	5	0	1	0	-100	0	0	0
Criminal Sexual Assault	Month	0	0	0	0	0	0	2	3	50	3	0	-100	2	0	-100	0	1	100
	YTD	1	7	600	8	10	25	9	15	67	19	15	-21	8	8	0	16	20	25
Robbery	Month	1	1	0	2	2	0	6	2	-67	12	3	-75	4	3	-25	0	4	400
	YTD	10	24	140	15	23	53	39	38	-3	61	49	-20	40	36	-10	12	22	83
Aggravated Assault (Reported)	Month	4	6	50	6	4	-33	8	5	-38	27	19	-30	10	12	20	8	7	-13
	YTD	60	74	23	55	67	22	53	72	36	274	261	-5	167	185	11	68	63	-7
VIOLENT CRIMES SUB-TOTAL	Month	5	7	40	8	6	-25	16	10	-38	42	23	-45	16	15	-6	8	12	50
	YTD	72	105	46	79	100	27	102	127	25	359	330	-8	216	229	6	96	105	9
Burglary	Month	1	3	200	6	7	17	7	25	257	28	15	-46	9	9	0	3	3	0
	YTD	31	24	-23	55	69	25	154	163	6	288	331	15	101	91	-10	23	16	-30
Theft	Month	27	22	-19	12	22	83	26	31	19	42	31	-26	34	19	-44	4	12	200
	YTD	222	235	6	208	173	-17	381	332	-13	410	369	-10	252	233	-8	78	92	18
Motor Vehicle Theft	Month	1	1	0	14	9	-36	4	6	50	23	6	-74	8	1	-88	3	1	-67
	YTD	30	15	-50	46	53	15	43	38	-12	153	84	-45	43	41	-5	13	5	-62
Arson	Month	0	0	0	0	0	0	0	3	300	1	1	0	0	1	100	0	0	0
	YTD	1	0	-100	1		-100	2	6	200	25	18	-28	7	6	-14	1	0	-100
PROPERTY CRIMES SUB-TOTAL	Month	29	26	-10	32	38	19	37	65	76	94	53	-44	51	30	-41	10	16	60
	YTD	284	274	-4	310	295	-5	580	539	-7	876	802	-8	403	371	-8	115	113	-2
TOTAL VIOLENT & PROPERTY		34	33	-3	40	44	10	53	75	42	136	76	-44	67	45	-33	18	28	56
		356	379	6	389	395	2	682	666	-2	1235	1132	-8	619	600	-3	211	218	3
DRUG OFFENSES	Month	6	2	-67	4	8	100	8	5	-38	21	9	-57	23	15	-35	2	0	-100
	YTD	60	47	-22	91	93	2	72	114	58	327	264	-19	174	194	11	20	17	-15

Includes all incidents where a report was issued, founded AND unfounded.

Data source: I.S. Dept / rim-part report

DISTRICT PART I CRIMES (8-14)

November 2006

Districts		8			10			11			12			13			14		
		2005	2006	%	2005	2006	%	2005	2006	%	2005	2006	%	2005	2006	%	2005	2006	%
Murder	Month	0	1	100	0	0	0	0	0	0	0	1	100	0	0	0	0	0	0
	YTD	3	3	0	0	0	0	0	2	200	0	1	100	0	0	0	0	0	0
Criminal Sexual Assault	Month	0	0	0	2	3	50	1	1	0	4	6	50	0	0	0	1	0	-100
	YTD	13	8	-38	14	17	21	9	8	-11	23	23	0	8	8	0	4	3	-25
Robbery	Month	5	2	-60	7	7	0	3	3	0	3	2	-33	2	1	-50	2	0	-100
	YTD	38	27	-29	57	63	11	40	32	-20	16	25	56	20	22	10	11	7	-36
Aggravated Assault	Month	12	3	-75	10	15	50	4	8	100	1	3	200	13	5	-62	1	0	-100
	YTD	170	128	-25	163	176	8	128	98	-23	25	51	104	89	90	1	17	24	41
VIOLENT CRIMES SUB-TOTAL	Month	17	6	-65	19	25	32	8	12	50	8	12	50	15	6	-60	4	0	-100
	YTD	224	166	-26	234	256	9	177	140	-21	64	100	56	117	120	3	32	34	6
Burglary	Month	29	32	10	17	20	18	14	12	-14	9	6	-33	10	15	50	4	10	150
	YTD	241	241	0	307	273	-11	165	147	-11	74	61	-18	135	125	-7	62	54	-13
Theft	Month	32	29	-9	39	35	-10	19	21	11	33	16	-52	19	8	-58	9	34	278
	YTD	364	278	-24	451	466	3	269	255	-5	178	144	-19	205	231	13	269	254	-6
Motor Vehicle Theft	Month	16	9	-44	18	7	-61	12	6	-50	5	1	-80	6	1	-83	1	0	-100
	YTD	101	92	-9	117	91	-22	64	70	9	38	26	-32	53	38	-28	15	11	-27
Arson	Month	2	2	0	1	1	0	0	1	100	0	0	0	0	0	0	0	0	0
	YTD	17	17	0	12	9	-25	3	4	33	9	6	-33	3	3	0	1	2	100
PROPERTY CRIMES SUB-TOTAL	Month	79	72	-9	75	63	-16	45	40	-11	47	23	-51	35	24	-31	14	44	214
	YTD	723	628	-13	887	839	-5	501	476	-5	299	237	-21	396	397	0	347	321	-7
TOTAL VIOLENT & PROPERTY	Month	96	78	-19	94	88	-6	53	52	-2	55	35	-36	50	30	-40	18	44	144
	YTD	947	794	-16	1121	1095	-2	678	616	-9	363	337	-7	513	517	1	379	355	-6
DRUG OFFENSES	Month	21	14	-33	18	19	6	18	19	6	8	6	-25	4	5	25	1	1	0
	YTD	273	310	14	180	216	20	113	179	58	41	63	54	33	66	100	19	17	-11

Includes all incidents where a report was issued, founded AND unfounded.

Data source: I.S. Dept / rim-part report

DISTRICT PART I CRIMES (15-19)

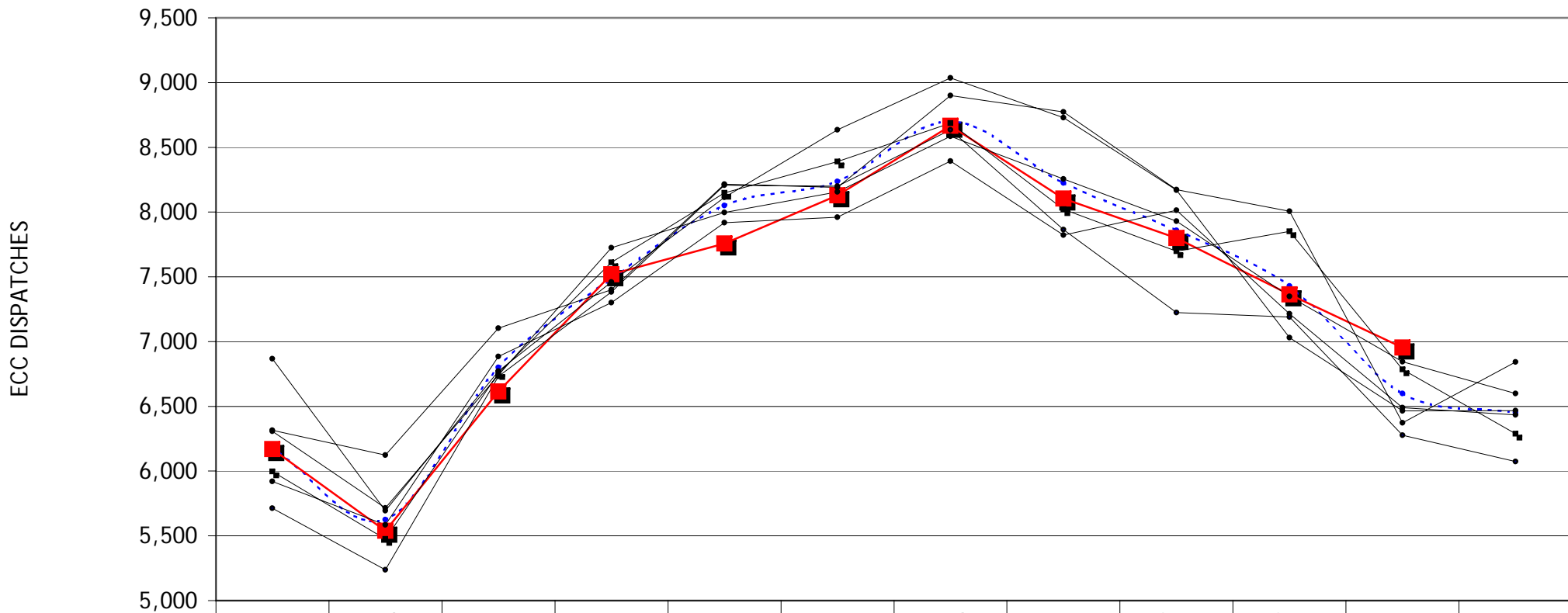
November 2006

Districts		15			16			17			18			19			
		2005	2006	%	2005	2006	%	2005	2006	%	2005	2006	%	2005	2006	%	
Murder	Month	0	0	0	0	0	0	0	0	0	0	0	0	0	0	0	
	YTD	0	2	200	0	1	100	0	0	0	0	0	0	0	0	0	
Criminal Sexual Assault	Month	1	1	0	1	1	0	0	1	100	0	0	0	0	1	100	
	YTD	4	4	0	5	7	40	0	1	100	2	2	0	2	1	-50	
Robbery	Month	0	2	200	0	4	400	0	0	0	1	3	200	1	0	-100	
	YTD	3	10	233	13	9	-31	0	0	0	12	12	0	4	3	-25	
Aggravated Assault	Month	2	0	-100	0	1	100	0	0	0	0	5	500	3	3	0	
	YTD	21	20	-5	19	27	42	0	0	0	24	27	13	15	16	7	
VIOLENT CRIMES SUB-TOTAL	Month	3	3	0	1	6	500	0	1	100	1	8	700	4	4	0	
	YTD	28	36	29	37	44	19	0	1	100	38	41	8	21	20	-5	
Burglary	Month	7	0	-100	11	10	-9	1	0	-100	2	9	350	4	3	-25	
	YTD	38	49	29	118	116	-2	3	0	-100	33	34	3	59	69	17	
Theft	Month	9	10	11	20	38	90	2	0	-100	23	25	9	29	19	-34	
	YTD	163	141	-13	361	352	-2	8	8	0	455	355	-22	223	214	-4	
Motor Vehicle Theft	Month	1	1	0	1	0	-100	0	0	0	1	1	0	2	1	-50	
	YTD	8	13	63	21	22	5	0	0	0	15	18	20	15	14	-7	
Arson	Month	0	0	0	0	0	0	0	0	0	0	0	0	0	0	0	
	YTD	1	1	0	4	0	-100	0	0	0	2	0	-100	3	0	-100	
PROPERTY CRIMES SUB-TOTAL	Month	17	11	-35	32	48	50	3	0	-100	26	35	35	35	23	-34	
	YTD	210	204	-3	504	490	-3	11	8	-27	505	407	-19	300	297	-1	
TOTAL VIOLENT & PROPERTY	Month	20	14	-30	33	54	64	3	1	-67	27	43	59	39	27	-31	
	YTD	238	240	1	541	534	-1	11	9	-18	543	448	-17	321	317	-1	
DRUG OFFENSES	Month	0	1	100	0	1	100	0	0	0	8	4	-50	0	0	0	
	YTD	11	23	109	24	26	8	0	0	0	37	37	0	10	11	10	

Includes all incidents where a report was issued, founded AND unfounded.

Data source: I.S. Dept / rim-part report

DISPATCHES (Urgent + Routine + Backlog)



	Jan	Feb	Mar	Apr	May	Jun	Jul	Aug	Sep	Oct	Nov	Dec
----- Average	6185	5624	6800	7486	8051	8237	8700	8224	7859	7429	6598	6451
—■— 2006	6170	5539	6615	7520	7758	8130	8665	8104	7800	7365	6954	
—■— 2005	5997	5476	6756	7612	8149	8390	8688	8022	7698	7852	6785	6289
—●— 2004	5920	5584	6884	7301	7919	7960	8394	7822	8014	7214	6490	6435
—●— 2003	5714	5237	6731	7383	8207	8200	8635	7864	7225	7189	6277	6073
—●— 2002	6868	5694	6771	7460	8113	8635	9036	8730	8169	7031	6465	6467
—●— 2001	6308	5716	6741	7724	7997	8155	8585	8255	7930	7348	6845	6599
—●— 2000	6316	6124	7104	7400	8216	8191	8899	8773	8174	8007	6373	6843

MURDER - PEORIA IL

1966 - 2006 (thru November)

