

Activity / Crime Report

for

December 2005



Steven M. Settingsgaard
Chief of Police

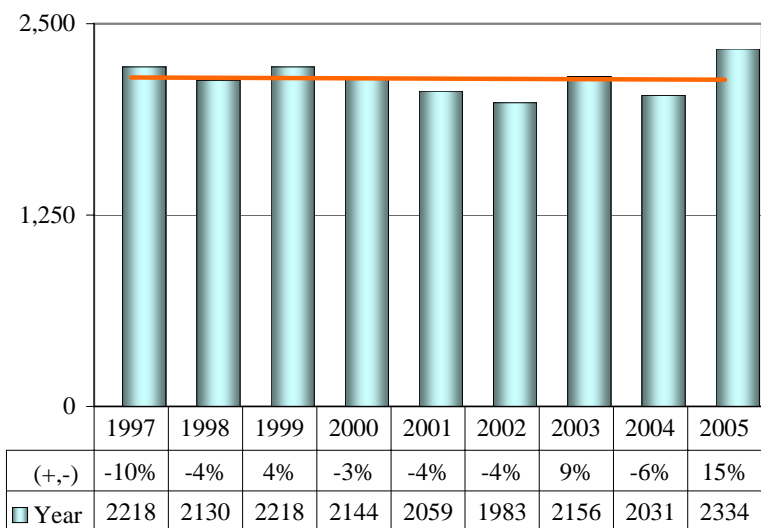
*Prepared by Police Administration, Records, Information System
Peoria, Illinois Police Department*

ACTIVITY / CRIME REPORT

		2001	2002	2003	2004	2005	(+ , -) 2005	PAGE
ARRESTS	New Offenders	2059	1983	2156	2031	2334	15%	2
	Repeat Offenders	8750	8677	8632	8808	8981	2%	2
	ALL	10809	10660	10788	10839	11315	4%	3
DISPATCH CALLS	Urgent	36250	36570	35177	36778	37832	3%	3
	Routine	47199	48434	45504	45088	46126	2%	4
	Backlog	4754	4435	4045	4071	3766	-7%	4
	Dispatch Total	88203	89439	84726	85937	87724	2%	5
ON-VIEW CALLS		52776	57134	53506	47009	48078	2%	5
DISPATCH AND ON-VIEW CALLS		140979	146573	138232	132946	135802	2%	6
CRIMES - PERSON (VIOLENT)	Murder	14	9	7	14	14	0%	9
	Criminal Sexual Assault	157	180	125	121	123	2%	10
	Robbery	345	380	285	343	380	11%	11
	Aggravated Assault	536	437	355	523	528	1%	12
	Crimes - Persons Total	1052	1006	772	1001	1045	4%	13
CRIMES - PROPERTY	Burglary	1840	1841	1850	1760	1778	1%	14
	Theft	5649	5590	4989	4508	4848	8%	15
	Motor Vehicle Theft	932	860	720	660	783	19%	16
	Arson	105	85	83	100	89	-11%	17
	Crimes - Property Total	8526	8376	7642	7028	7498	7%	18
CRIMES - PERSON (VIOLENT) & PROPERTY		9578	9382	8414	8029	8543	6%	19
DRUG ARRESTS	Cannabis	314	267	428	520	614	18%	20
	Controlled Substance	289	289	396	507	611	21%	20
	Drug Paraphernalia	88	119	142	174	215	24%	21
	Needles & Syringes	11	10	12	6	15	150%	21
JUVENILE - PERSON (VIOLENT) ARRESTS	Murder	0	0	0	1	0	-100%	22
	Criminal Sexual Assault	9	3	5	5	0	-100%	22
	Robbery	26	15	9	13	15	15%	23
	Aggravated Assault	215	260	221	271	297	10%	23
	Crimes - Persons Total	250	278	235	290	312	8%	24
JUVENILE - PROPERTY CRIME ARRESTS	Burglary	53	49	36	31	46	48%	24
	Theft	345	380	329	291	251	-14%	25
	Motor Vehicle Theft	49	73	30	14	19	36%	25
	Arson	4	3	2	8	6	-25%	26
	Crimes - Property Total	451	451	397	344	322	-6%	26
JUVENILE - PERSON (VIOLENT) & PROPERTY	Juv Per. & Property Total	701	729	632	634	634	0%	27
MUNICIPAL ORDINANCES	Noise	229	326	384	885	976	10%	27
	Trash & Litter	36	106	64	92	155	68%	28
	Curfew	627	558	486	505	710	41%	28
	Alcohol by Minor	1037	561	521	995	794	-20%	29
	All Violations	2641	2248	2329	3912	4722	21%	29
	MOVNS itemized						21%	30
	MOVNS Quality of Life						49%	32
TRAFFIC	Tickets	28353	27922	27292	27578	28162	2%	34
	Withdraw if Repaired	1446	1137	1355	1573	1433	-9%	34
	D.U.I. Arrests	460	484	454	491	565	15%	35
	Accidents	5235	5675	5709	5403	5232	-3%	35

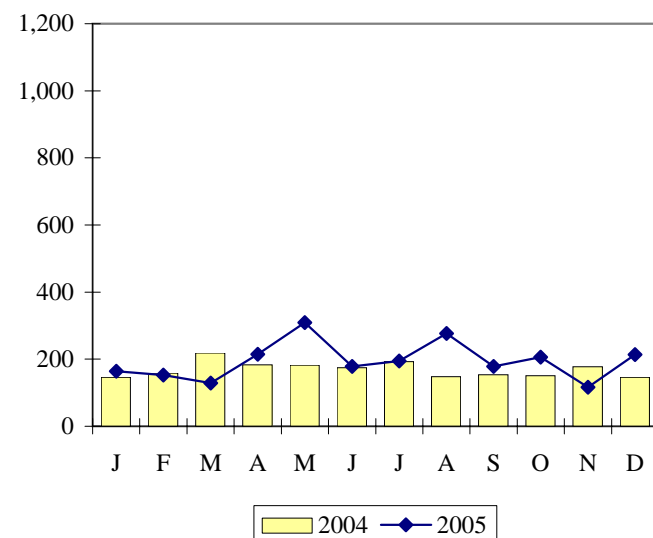
	% CHANGE		
	DEC	2005	PAGE
Arrests			
First Offender.....	47	15	2
Repeat Offender	2	2	2
Arrest Total	11	4	3
Calls			
Dispatched Urgent	4	3	3
Dispatched Routine	-6	2	4
Dispatched Backlog	-27	-7	4
Dispatched Total	-2	2	5
On-View	6	2	5
Call Total (Dispatched and On-View)	1	2	6
Crimes - Persons			
Murder	-100	0	9
Murder Arrests.....	0	50	9
Criminal Sexual Assault	-20	2	10
Criminal Sexual Assault Arrests	-26	-26	10
Robbery	-30	11	11
Robbery Arrests.....	0	5	11
Aggravated Assault	-27	1	12
Aggravated Assault Arrests.....	50	-2	12
Crimes - Persons Total	-28	4	13
Crimes - Persons Total Arrests.....	37	-2	13
Crimes - Property			
Burglary	-19	1	14
Burglary Arrests.....	-36	12	14
Theft	-17	8	15
Theft Arrests.....	-6	-3	15
Motor Vehicle Theft	-27	19	16
Motor Vehicle Theft Arrests.....	-71	62	16
Arson	-75	-11	17
Arson Arrests.....	-100	-39	17
Crimes - Property Total	-19	7	18
Crimes - Property Total Arrests.....	-21	3	18
Crimes - Total Persons & Property	-20	6	19
Crimes - Total Persons & Property Arrests	-13	2	19

	% CHANGE		
	DEC	2005	PAGE
Drug Arrests			
Cannabis	35	18	20
Controlled Substances	-21	21	20
Drug Paraphernalia	8	24	21
Needles & Syringes	100	150	21
Juvenile - Crimes Against Person Arrests			
Murder	0	-100	22
Criminal Sexual Assault	0	-100	22
Robbery	0	15	23
Aggravated Assault	-49	10	23
Violent Total Juvenile Arrests	-49	8	24
Juvenile - Property Crimes Arrests			
Burglary	0	48	24
Theft	-46	-14	25
Motor Vehicle Theft	-40	36	25
Arson	0	-25	26
Property Total Juvenile Arrests	-39	-6	26
Juvenile - Total Violent / Property Arrests	-44	0	27
Municipal Ordinances - MOVNs			
Noise Violations	12	10	27
Trash and Litter	450	68	28
Curfew	-16	41	28
Alcohol by Minor	-47	-20	29
Total (all ordinances)	-11	21	29
MOVNS itemized 2005 vs 2004.....		21	30
Quality of Life MOVNS.....		49	32
Traffic			
Tickets	-1	2	34
Withdraw if Repaired Tickets	-6	-9	34
D.U.I. Arrests	5	15	35
Accidents	22	-3	35
Service Districts			39
Districts 1-6, Part 1 and Drug			40
Districts 8-14, Part 1 and Drug			41
Districts 15-19, Part 1 and Drug			42

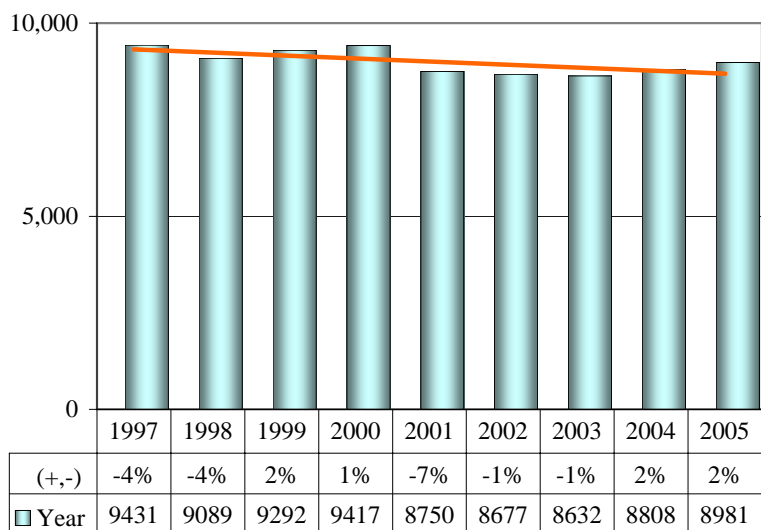


ARRESTS First Offender

	2004	2005	(+, -)
Jan	146	164	12%
Feb	158	153	-3%
Mar	218	129	-41%
Apr	183	215	17%
May	182	309	70%
Jun	175	178	2%
Jul	193	195	1%
Aug	148	277	87%
Sep	154	178	16%
Oct	151	206	36%
Nov	177	116	-34%
Dec	146	214	47%
YEAR	2,031	2,334	15%

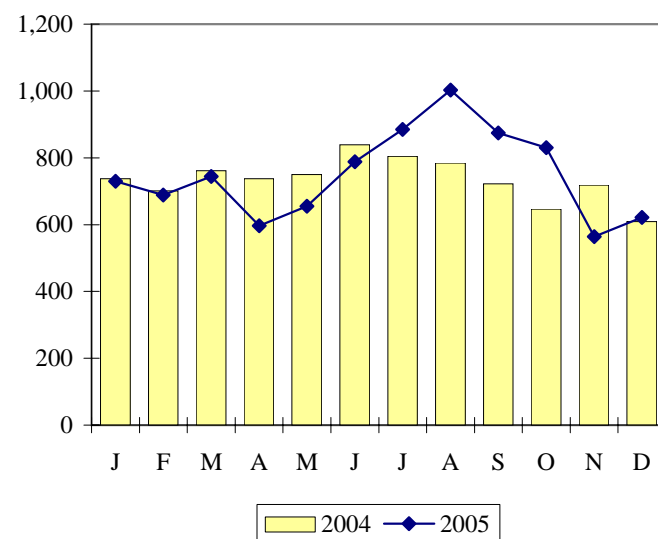


Data source: Records Dept.

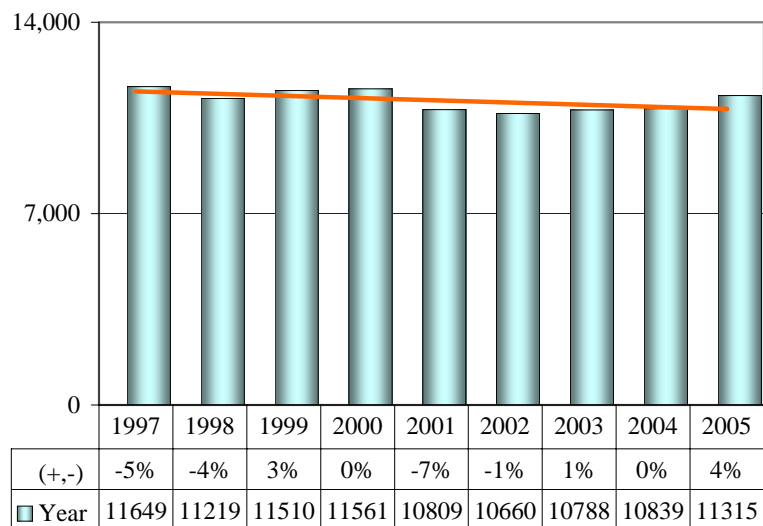


ARRESTS Repeat Offender

	2004	2005	(+, -)
Jan	737	730	-1%
Feb	701	689	-2%
Mar	761	744	-2%
Apr	737	597	-19%
May	750	655	-13%
Jun	839	788	-6%
Jul	804	885	10%
Aug	784	1003	28%
Sep	722	874	21%
Oct	646	830	28%
Nov	718	564	-21%
Dec	609	622	2%
YEAR	8,808	8,981	2%

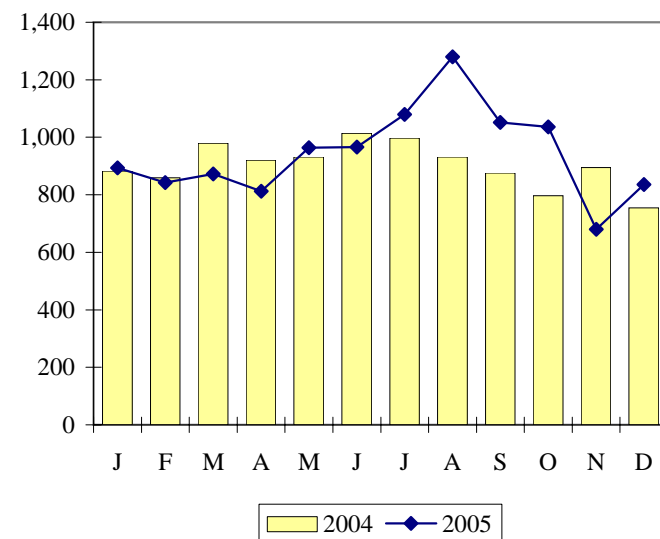


Data source: Records Dept.

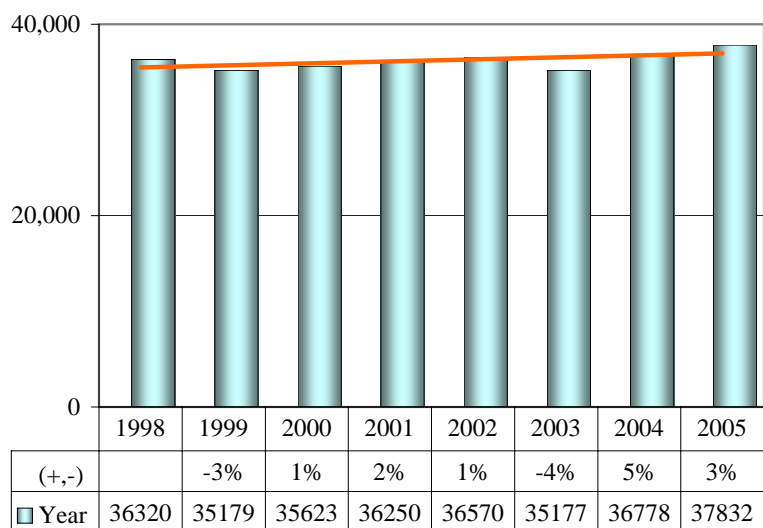


ARRESTS Arrest Total

	2004	2005	(+, -)
Jan	883	894	1%
Feb	859	842	-2%
Mar	979	873	-11%
Apr	920	812	-12%
May	932	964	3%
Jun	1,014	966	-5%
Jul	997	1,080	8%
Aug	932	1,280	37%
Sep	876	1,052	20%
Oct	797	1,036	30%
Nov	895	680	-24%
Dec	755	836	11%
YEAR	10,839	11,315	4%

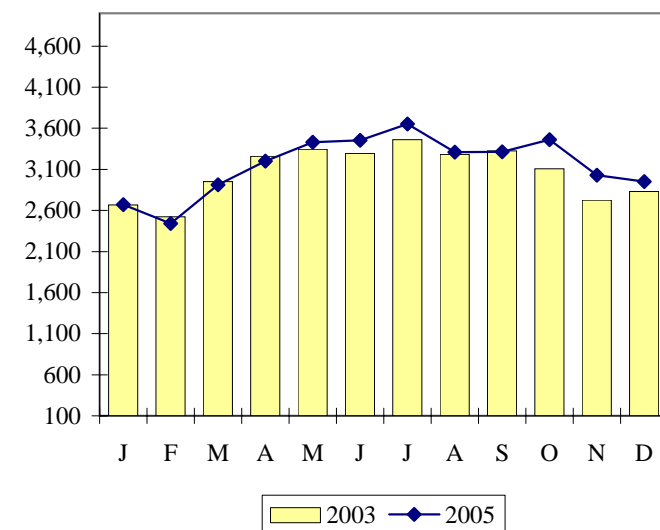


Data source: Records Dept.

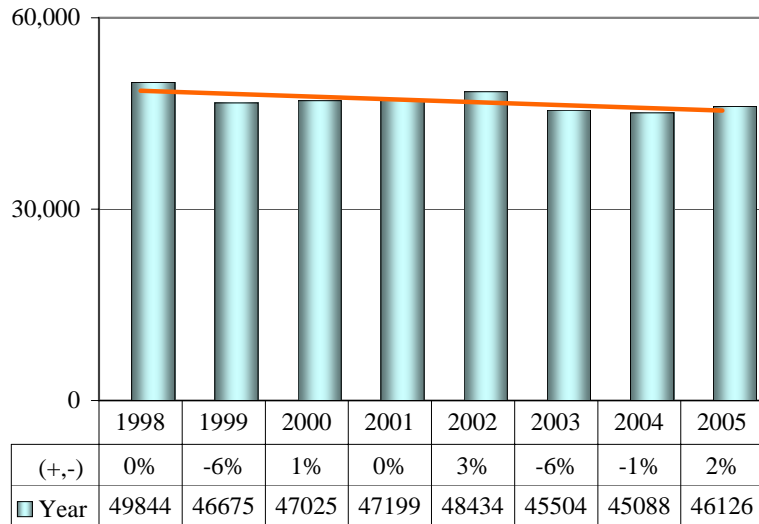


CALLS Dispatched Urgent

	2004	2005	(+, -)
Jan	2668	2669	0%
Feb	2524	2441	-3%
Mar	2950	2914	-1%
Apr	3259	3202	-2%
May	3345	3431	3%
Jun	3295	3455	5%
Jul	3461	3653	6%
Aug	3284	3309	1%
Sep	3327	3313	0%
Oct	3108	3461	11%
Nov	2726	3031	11%
Dec	2831	2953	4%
YEAR	36,778	37,832	3%

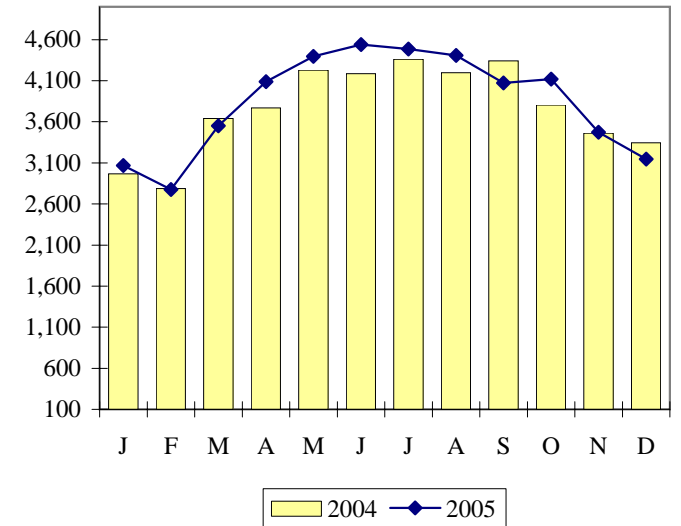


Data source: I.S. Dept / kad0m11 report

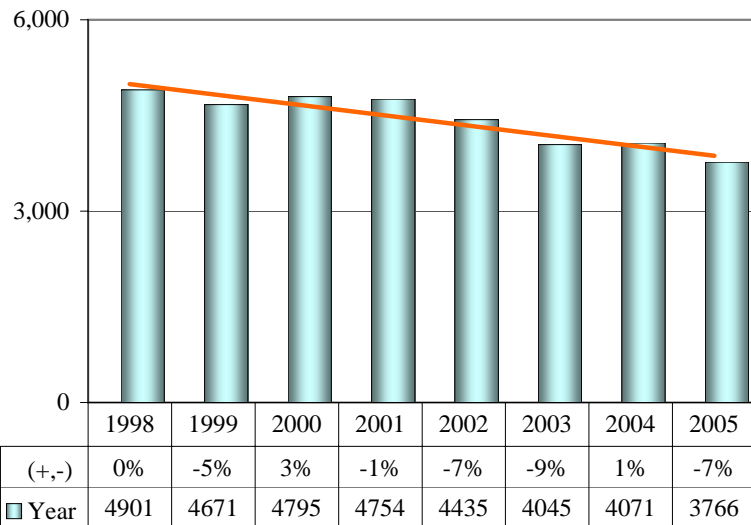


CALLS Dispatched Routine

	2004	2005	(+, -)
Jan	2965	3068	3%
Feb	2787	2774	0%
Mar	3642	3550	-3%
Apr	3768	4090	9%
May	4229	4397	4%
Jun	4186	4540	8%
Jul	4363	4486	3%
Aug	4198	4408	5%
Sep	4340	4073	-6%
Oct	3804	4119	8%
Nov	3461	3475	0%
Dec	3345	3146	-6%
YEAR	45,088	46,126	2%

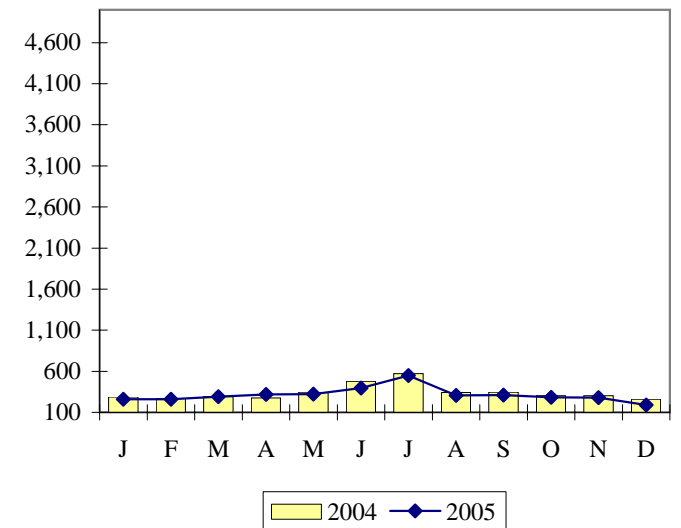


Data source: I.S. Dept / kad0m11 report

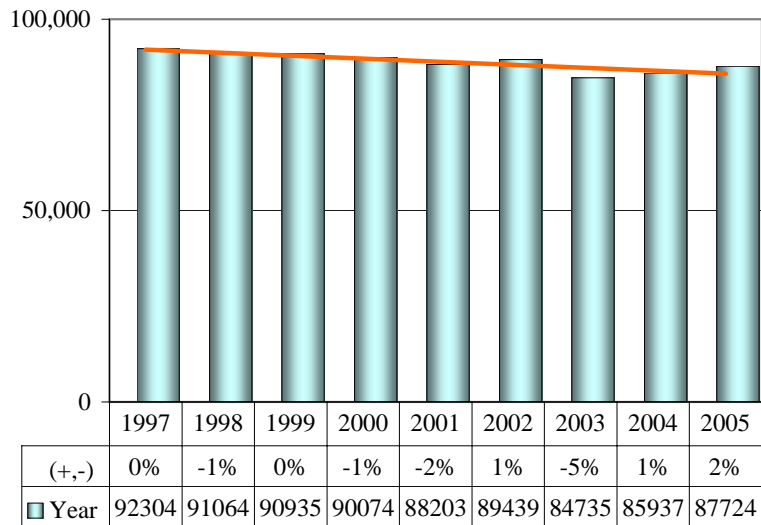


CALLS Dispatched Backlog

	2004	2005	(+, -)
Jan	287	260	-9%
Feb	273	261	-4%
Mar	292	292	0%
Apr	274	320	17%
May	345	321	-7%
Jun	479	395	-18%
Jul	570	549	-4%
Aug	340	305	-10%
Sep	347	312	-10%
Oct	302	282	-7%
Nov	303	279	-8%
Dec	259	190	-27%
YEAR	4,071	3,766	-7%

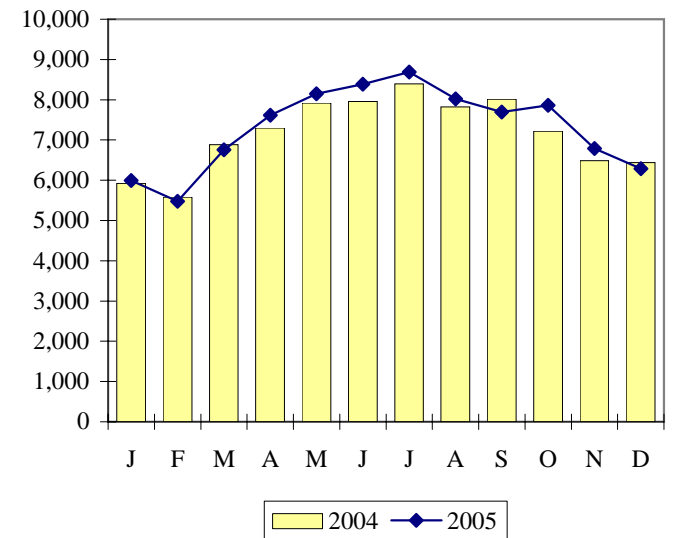


Data source: I.S. Dept / kad0m11 report

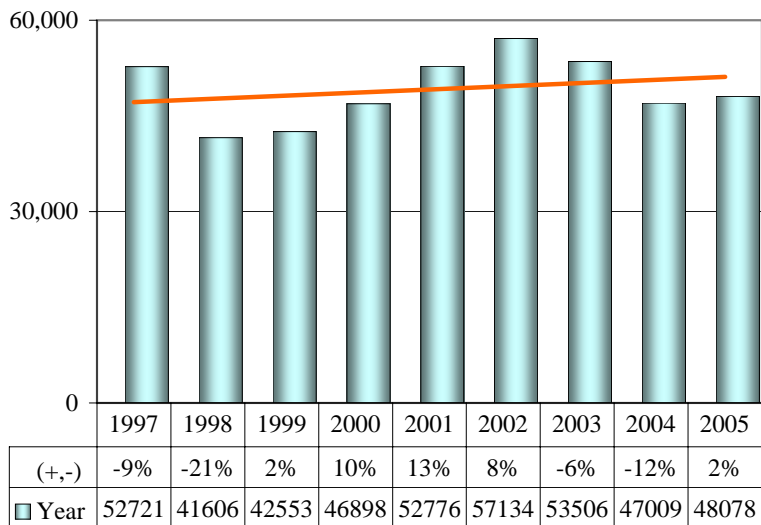


CALLS Dispatched Total

	2004	2005	(+, -)
Jan	5920	5997	1%
Feb	5584	5476	-2%
Mar	6884	6756	-2%
Apr	7301	7612	4%
May	7919	8149	3%
Jun	7960	8390	5%
Jul	8394	8688	4%
Aug	7822	8022	3%
Sep	8014	7698	-4%
Oct	7214	7862	9%
Nov	6490	6785	5%
Dec	6435	6289	-2%
YEAR	85,937	87,724	2%

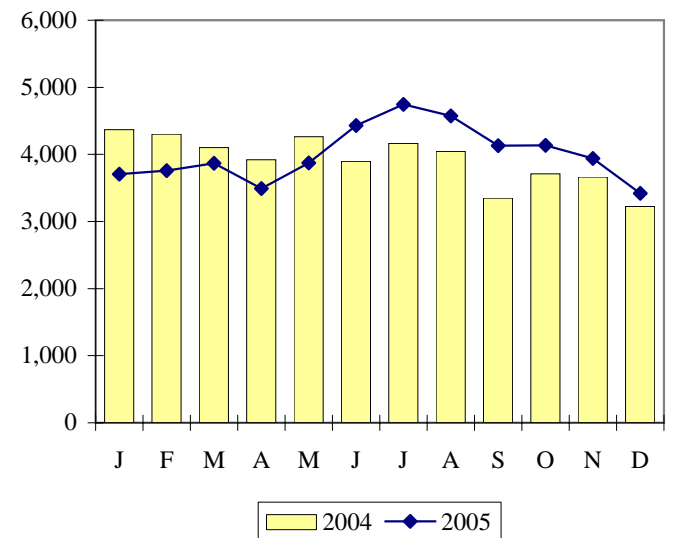


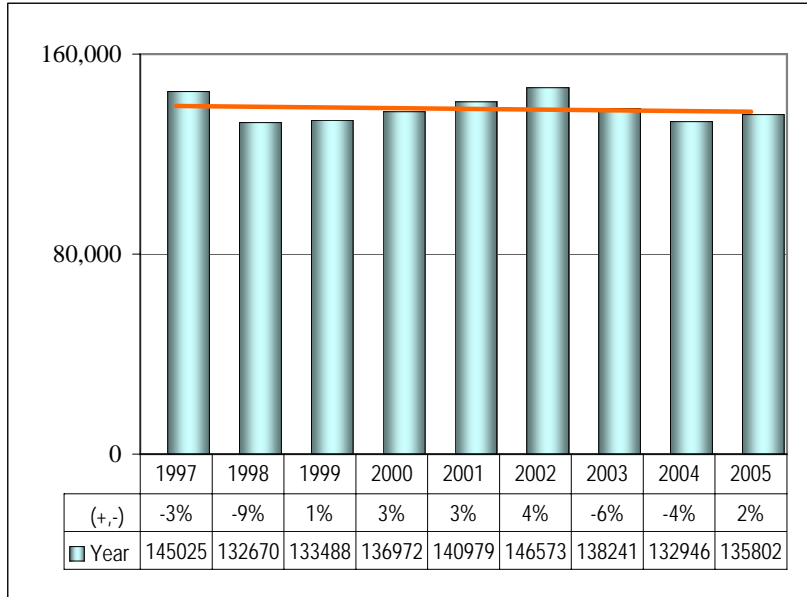
Data source: I.S. Dept / kad0m11 report



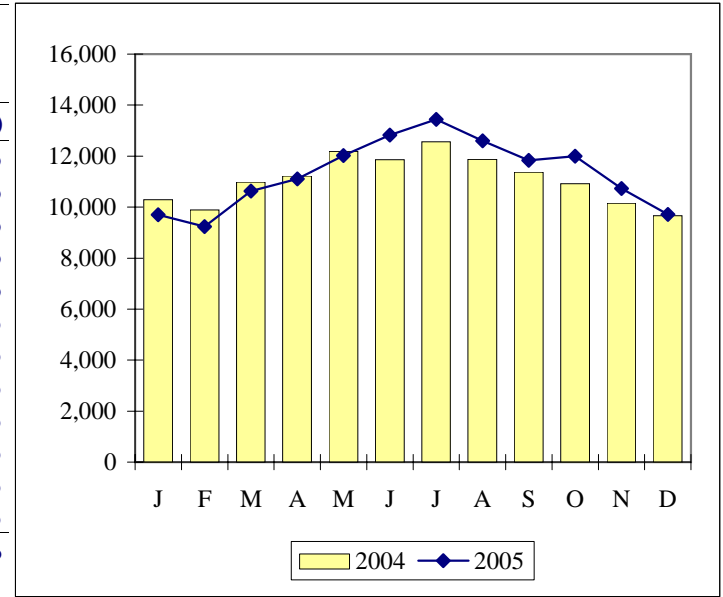
CALLS On-View

	2004	2005	(+, -)
Jan	4367	3704	-15%
Feb	4303	3757	-13%
Mar	4102	3870	-6%
Apr	3922	3493	-11%
May	4263	3874	-9%
Jun	3897	4431	14%
Jul	4165	4747	14%
Aug	4045	4576	13%
Sep	3350	4130	23%
Oct	3709	4135	11%
Nov	3664	3939	8%
Dec	3222	3422	6%
YEAR	47,009	48,078	2%

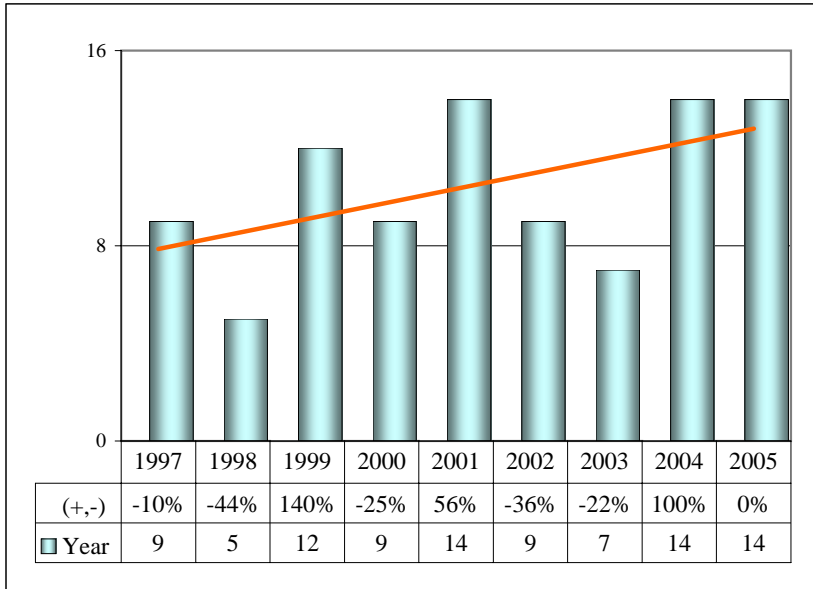




CALLS Dispatched and On-View			
	2004	2005	(+, -)
Jan	10287	9701	-6%
Feb	9887	9233	-7%
Mar	10986	10626	-3%
Apr	11223	11105	-1%
May	12182	12023	-1%
Jun	11857	12821	8%
Jul	12559	13435	7%
Aug	11867	12598	6%
Sep	11364	11828	4%
Oct	10923	11997	10%
Nov	10154	10724	6%
Dec	9657	9711	1%
YEAR	132,946	135,802	2%

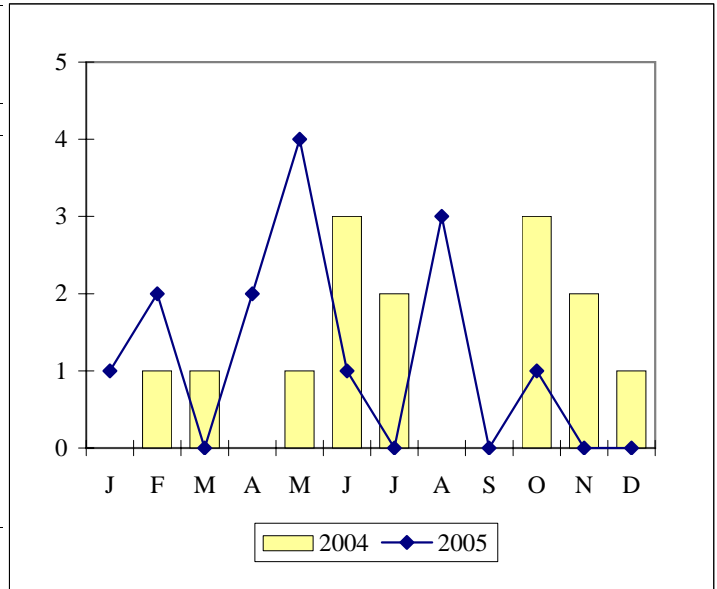


Data source: I.S. Dept / kad0m11 report

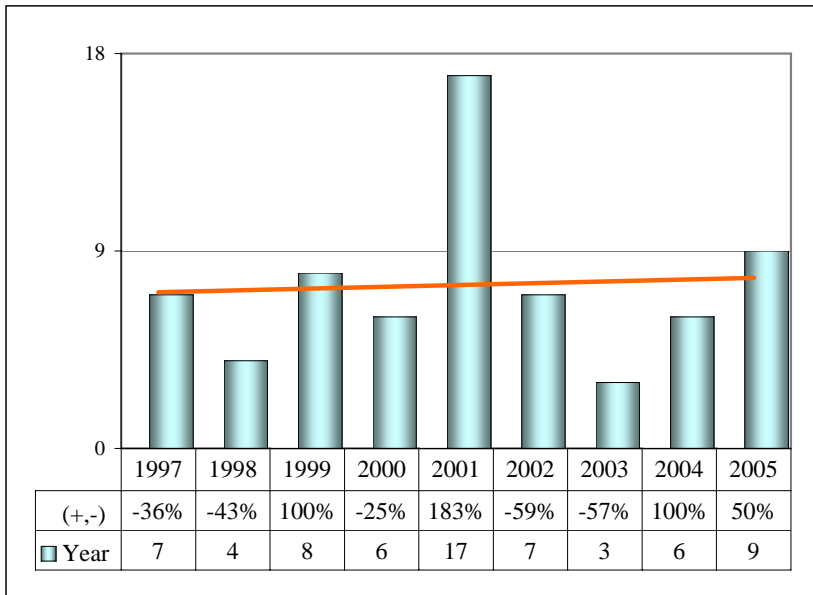


Offenses 0110, 30; does not include attempts.

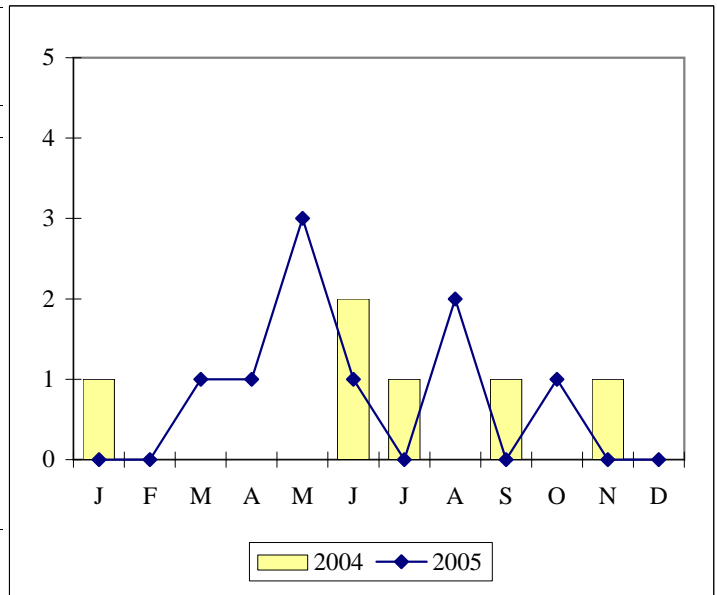
CRIMES - PERSONS			
Murder			
	2004	2005	(+, -)
Jan	0	1	100%
Feb	1	2	100%
Mar	1	0	-100%
Apr	0	2	200%
May	1	4	300%
Jun	3	1	-67%
Jul	2	0	-100%
Aug	0	3	300%
Sep	0	0	0%
Oct	3	1	-67%
Nov	2	0	-100%
Dec	1	0	-100%
YEAR	14	14	0%



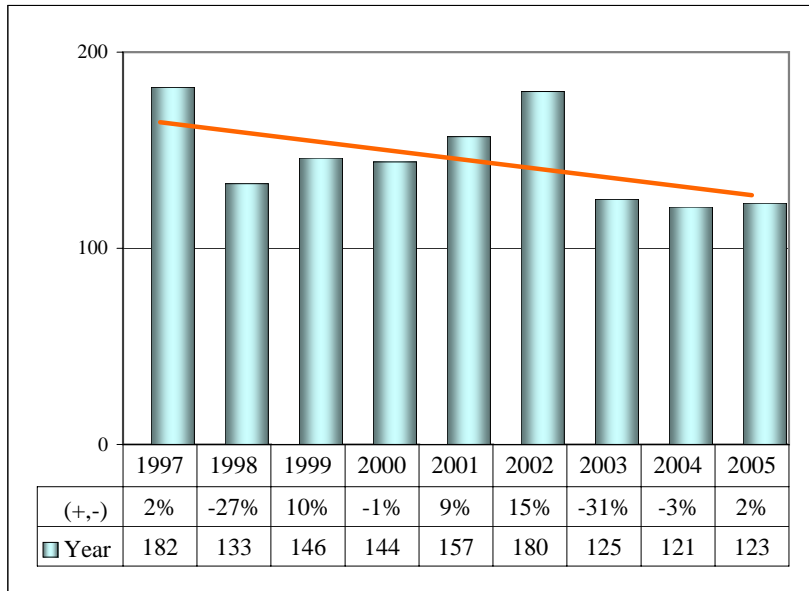
Data source: Records Dept UCR report



CRIMES - PERSONS			
Murder Arrests			
	2004	2005 (+, -)	
Jan	1	0	-100%
Feb	0	0	0%
Mar	0	1	100%
Apr	0	1	100%
May	0	3	300%
Jun	2	1	-50%
Jul	1	0	-100%
Aug	0	2	200%
Sep	1	0	-100%
Oct	0	1	100%
Nov	1	0	-100%
Dec	0	0	0%
YEAR	6	9	50%

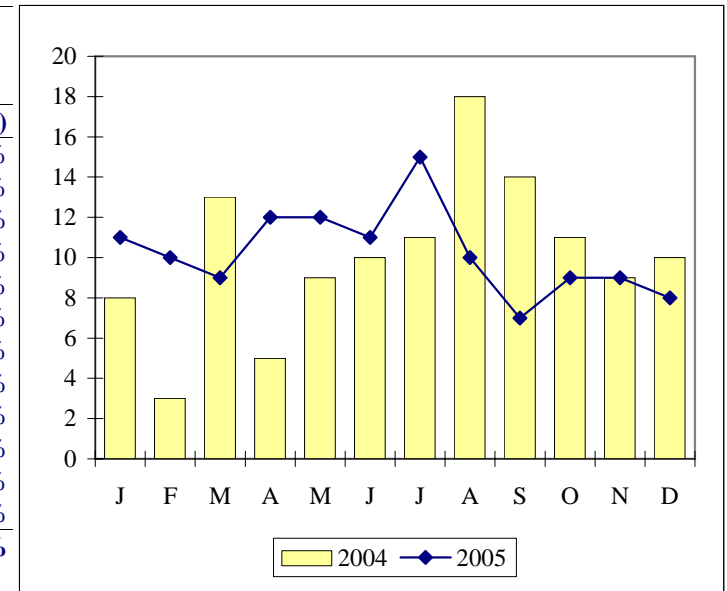


Data source: Records Dept UCR report

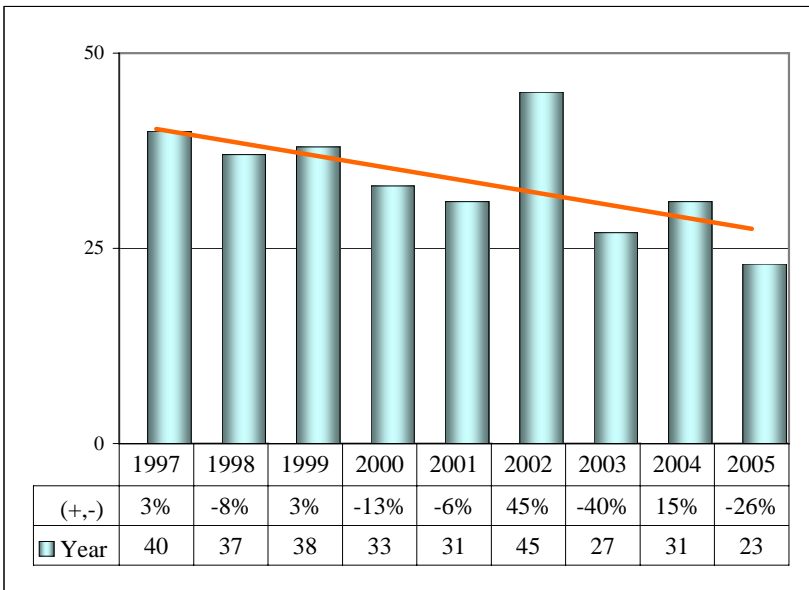


Offenses 0260, 61, 62, 81; attempts included.

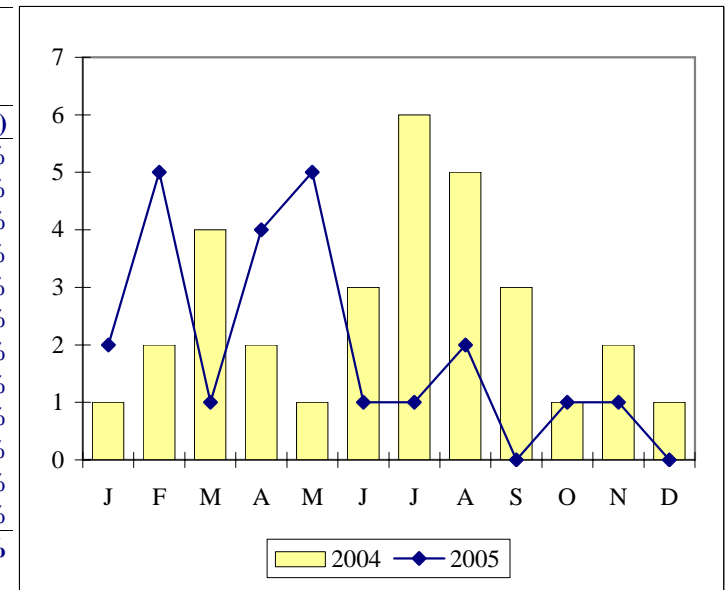
CRIMES - PERSONS Criminal Sexual Assault			
	2004	2005	(+, -)
Jan	8	11	38%
Feb	3	10	233%
Mar	13	9	-31%
Apr	5	12	140%
May	9	12	33%
Jun	10	11	10%
Jul	11	15	36%
Aug	18	10	-44%
Sep	14	7	-50%
Oct	11	9	-18%
Nov	9	9	0%
Dec	10	8	-20%
YEAR	121	123	2%



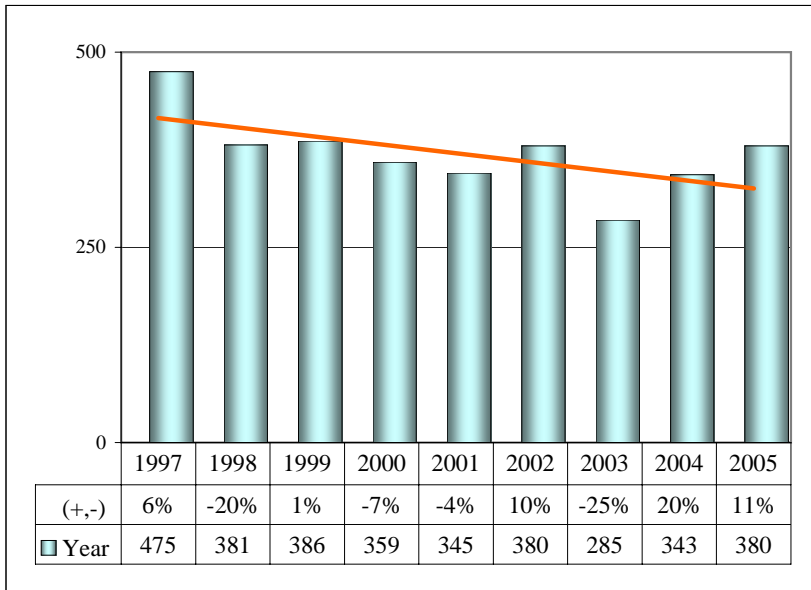
Data source: Records Dept UCR report



CRIMES - PERSONS Criminal Sexual Assault Arrests			
	2004	2005	(+, -)
Jan	1	2	100%
Feb	2	5	150%
Mar	4	1	-75%
Apr	2	4	100%
May	1	5	400%
Jun	3	1	-67%
Jul	6	1	-83%
Aug	5	2	-60%
Sep	3	0	-300%
Oct	1	1	0%
Nov	2	1	-50%
Dec	1	0	-100%
YEAR	31	23	-26%

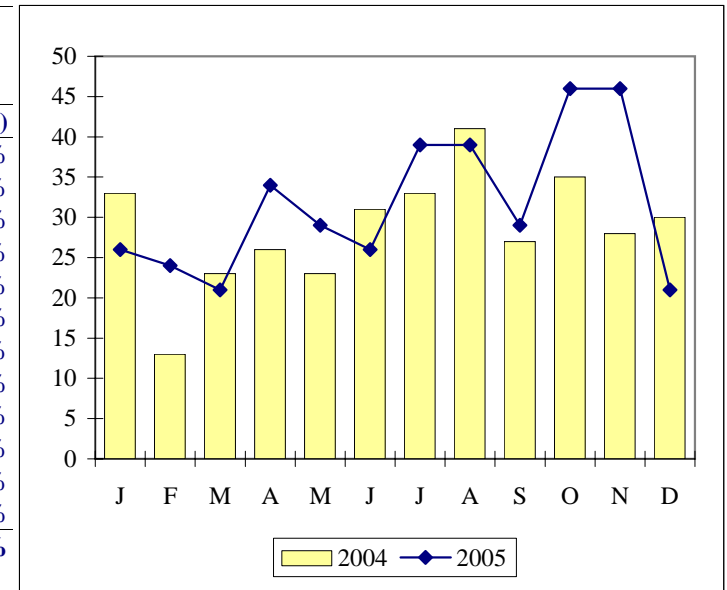


Data source: Records Dept UCR report

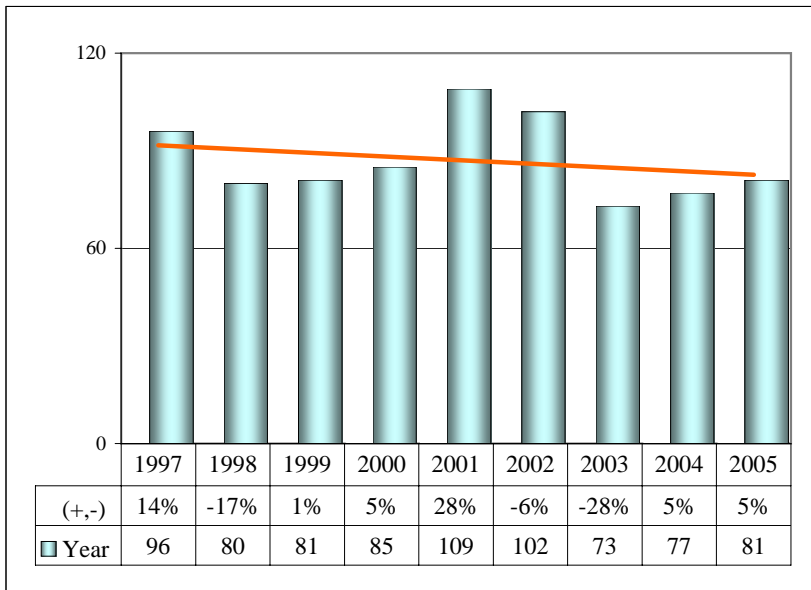


Offenses 0310, 20, 25, 26, 30; attempts included

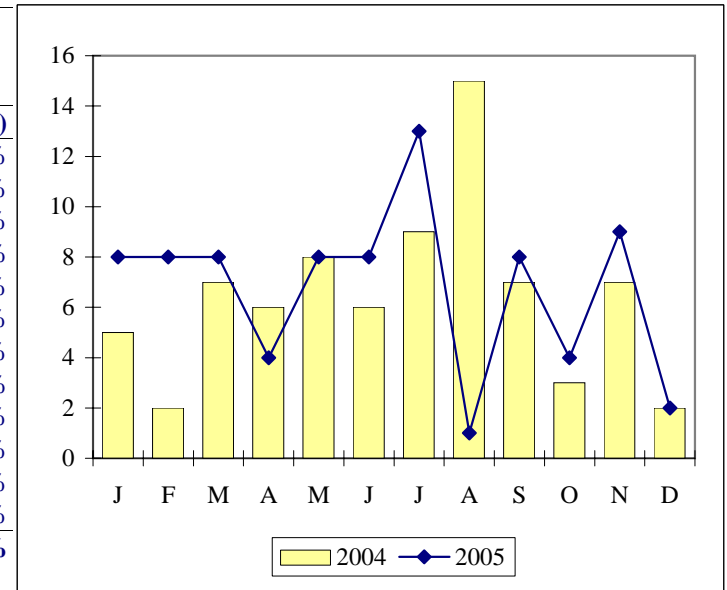
CRIMES - PERSONS			
Robbery			
	2004	2005	(+, -)
Jan	33	26	-21%
Feb	13	24	85%
Mar	23	21	-9%
Apr	26	34	31%
May	23	29	26%
Jun	31	26	-16%
Jul	33	39	18%
Aug	41	39	-5%
Sep	27	29	7%
Oct	35	46	31%
Nov	28	46	64%
Dec	30	21	-30%
YEAR	343	380	11%



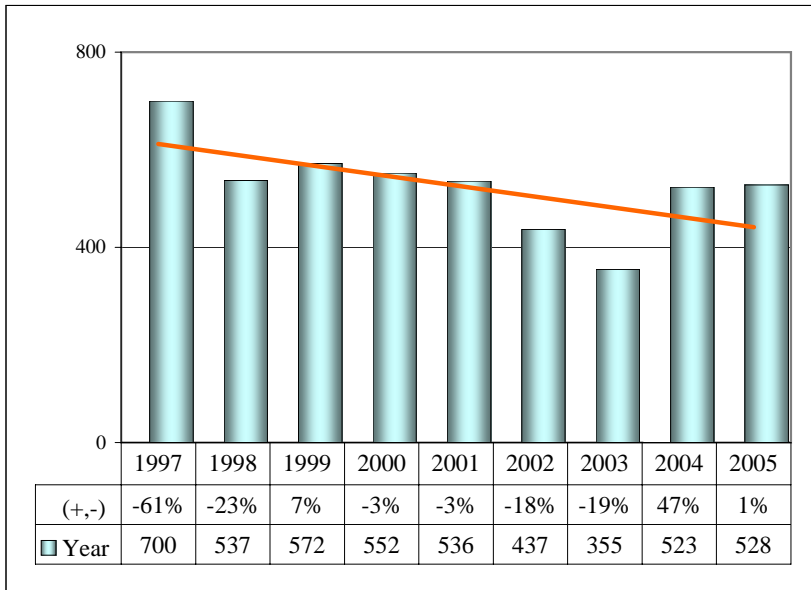
Data source: Records Dept UCR report



CRIMES - PERSONS			
Robbery Arrests			
	2004	2005	(+, -)
Jan	5	8	60%
Feb	2	8	300%
Mar	7	8	14%
Apr	6	4	-33%
May	8	8	0%
Jun	6	8	33%
Jul	9	13	44%
Aug	15	1	-93%
Sep	7	8	14%
Oct	3	4	33%
Nov	7	9	29%
Dec	2	2	0%
YEAR	77	81	5%



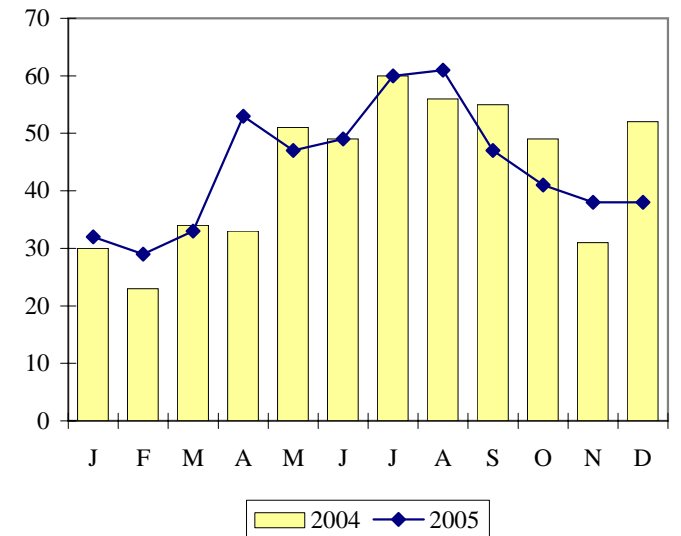
Data source: Records Dept UCR report



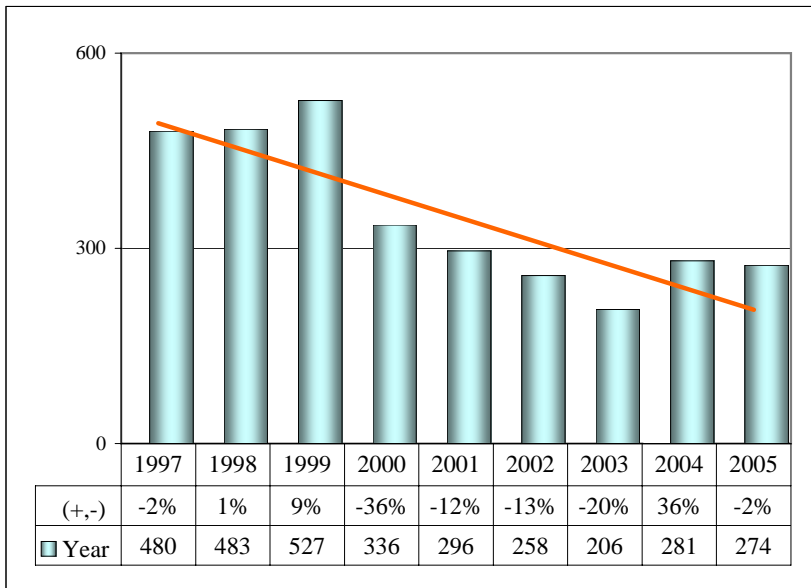
Offenses 0410, 80, 85, 90, 95, 0510, 0110 attempts, 0130 attempts

CRIMES - PERSONS Aggravated Assault / Battery

	2004	2005	(+, -)
Jan	30	32	7%
Feb	23	29	26%
Mar	34	33	-3%
Apr	33	53	61%
May	51	47	-8%
Jun	49	49	0%
Jul	60	60	0%
Aug	56	61	9%
Sep	55	47	-15%
Oct	49	41	-16%
Nov	31	38	23%
Dec	52	38	-27%
YEAR	523	528	1%

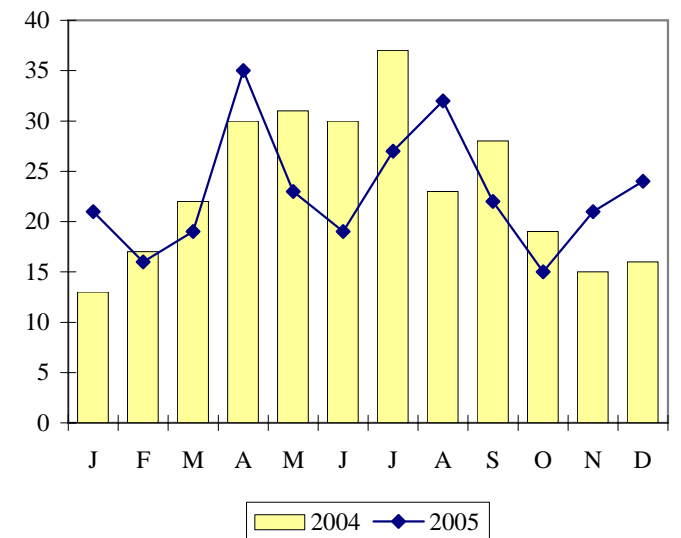


Data source: Records Dept UCR report

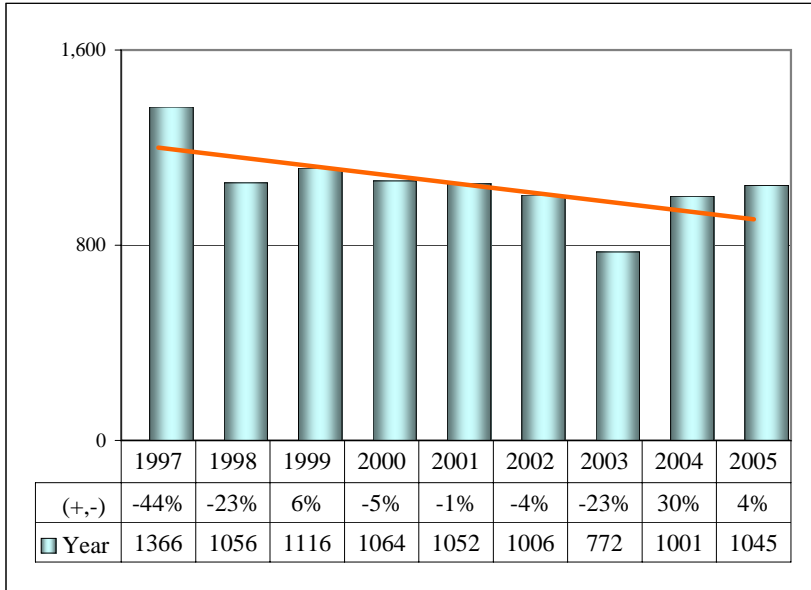


CRIMES - PERSONS Agg. Assault & Battery Arrests

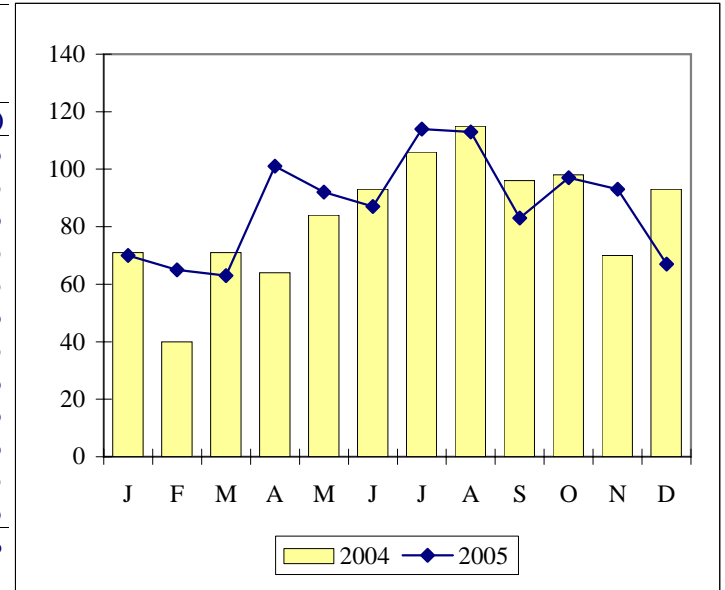
	2004	2005	(+, -)
Jan	13	21	62%
Feb	17	16	-6%
Mar	22	19	-14%
Apr	30	35	17%
May	31	23	-26%
Jun	30	19	-37%
Jul	37	27	-27%
Aug	23	32	39%
Sep	28	22	-21%
Oct	19	15	-21%
Nov	15	21	40%
Dec	16	24	50%
YEAR	281	274	-2%



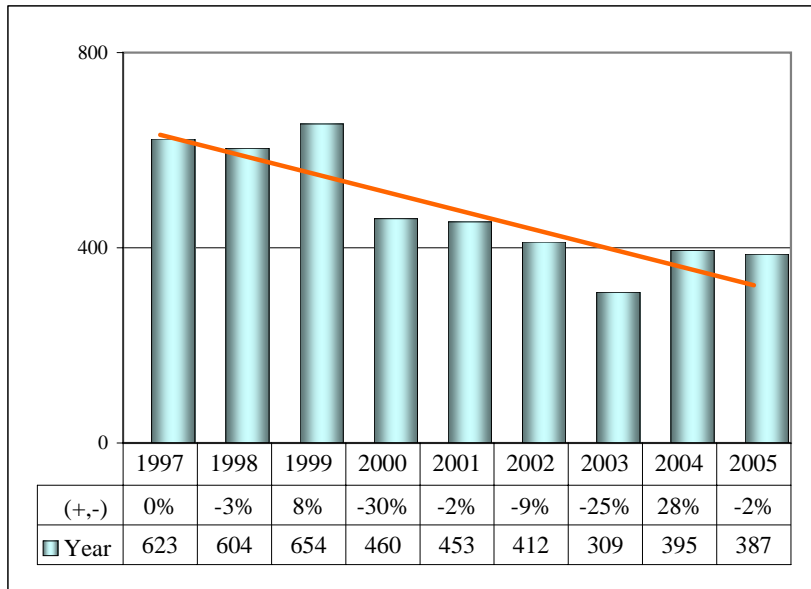
Data source: Records Dept UCR report



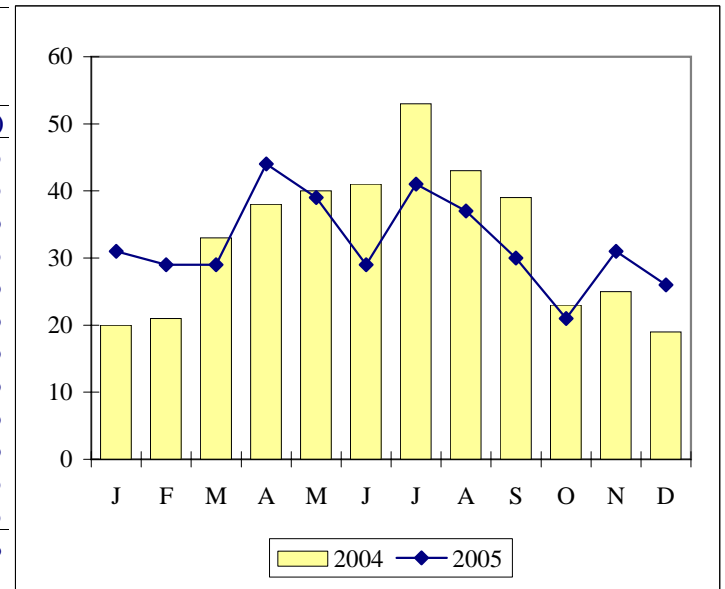
CRIMES - PERSONS			
Total			
	2004	2005	(+, -)
Jan	71	70	-1%
Feb	40	65	63%
Mar	71	63	-11%
Apr	64	101	58%
May	84	92	10%
Jun	93	87	-6%
Jul	106	114	8%
Aug	115	113	-2%
Sep	96	83	-14%
Oct	98	97	-1%
Nov	70	93	33%
Dec	93	67	-28%
YEAR	1,001	1,045	4%



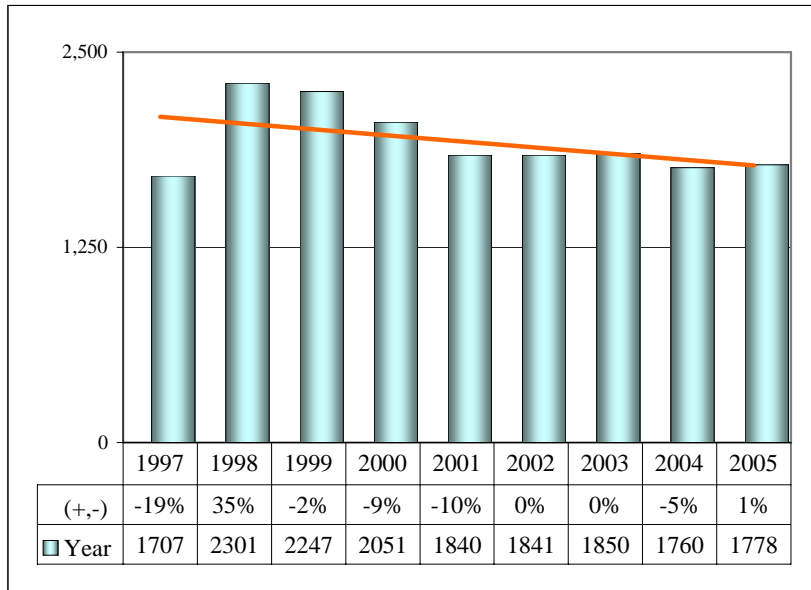
Data source: Records Dept UCR report



CRIMES - PERSONS			
Total Violent Crime Arrests			
	2004	2005	(+, -)
Jan	20	31	55%
Feb	21	29	38%
Mar	33	29	-12%
Apr	38	44	16%
May	40	39	-3%
Jun	41	29	-29%
Jul	53	41	-23%
Aug	43	37	-14%
Sep	39	30	-23%
Oct	23	21	-9%
Nov	25	31	24%
Dec	19	26	37%
YEAR	395	387	-2%

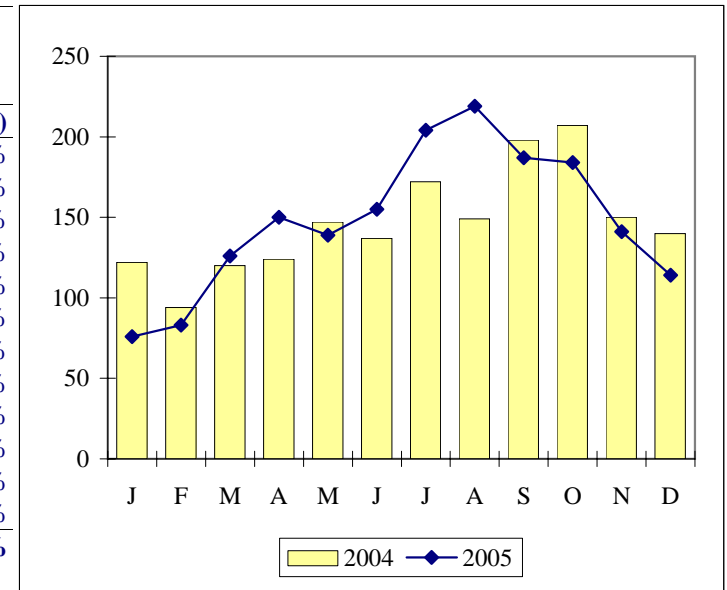


Data source: Records Dept UCR report

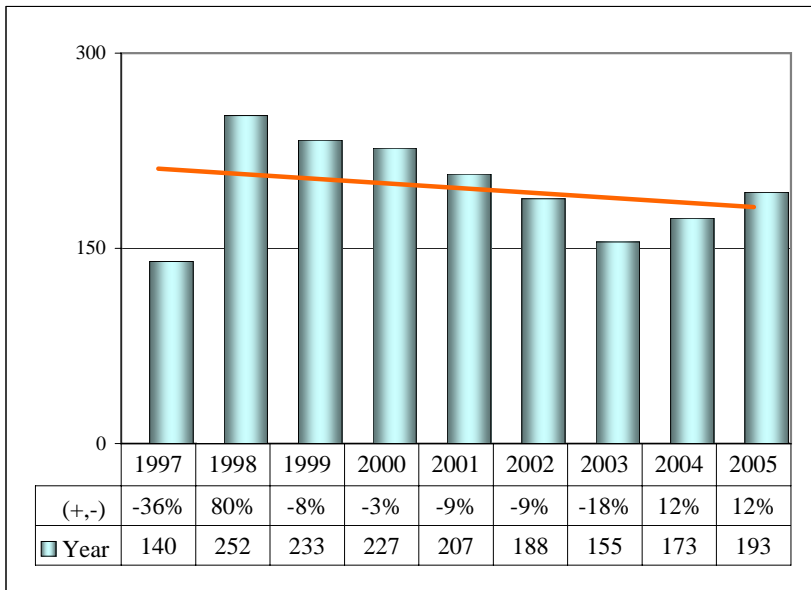


Offenses 0610, 25, 50; attempts included

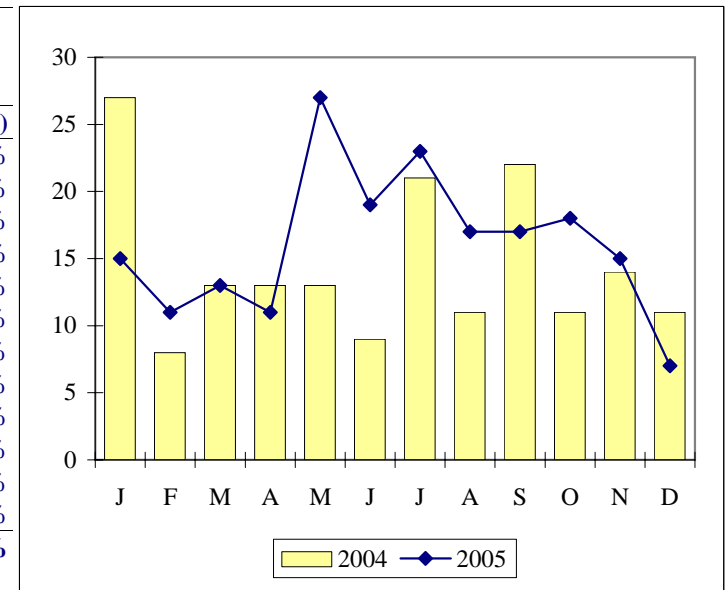
CRIMES - PROPERTY			
Burglary			
	2004	2005	(+, -)
Jan	122	76	-38%
Feb	94	83	-12%
Mar	120	126	5%
Apr	124	150	21%
May	147	139	-5%
Jun	137	155	13%
Jul	172	204	19%
Aug	149	219	47%
Sep	198	187	-6%
Oct	207	184	-11%
Nov	150	141	-6%
Dec	140	114	-19%
YEAR	1,760	1,778	1%



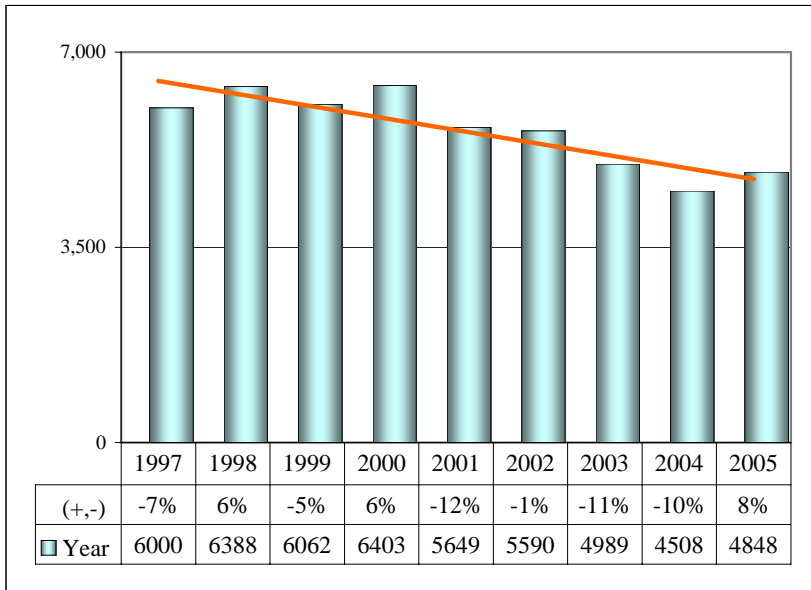
Data source: Records Dept UCR report



CRIMES - PROPERTY			
Burglary Arrests			
	2004	2005	(+, -)
Jan	27	15	-44%
Feb	8	11	38%
Mar	13	13	0%
Apr	13	11	-15%
May	13	27	108%
Jun	9	19	111%
Jul	21	23	10%
Aug	11	17	55%
Sep	22	17	-23%
Oct	11	18	64%
Nov	14	15	7%
Dec	11	7	-36%
YEAR	173	193	12%

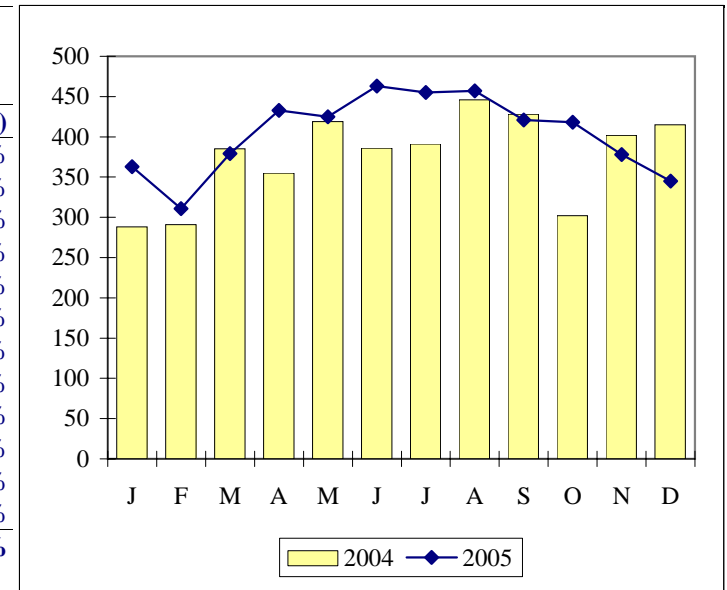


Data source: Records Dept UCR report

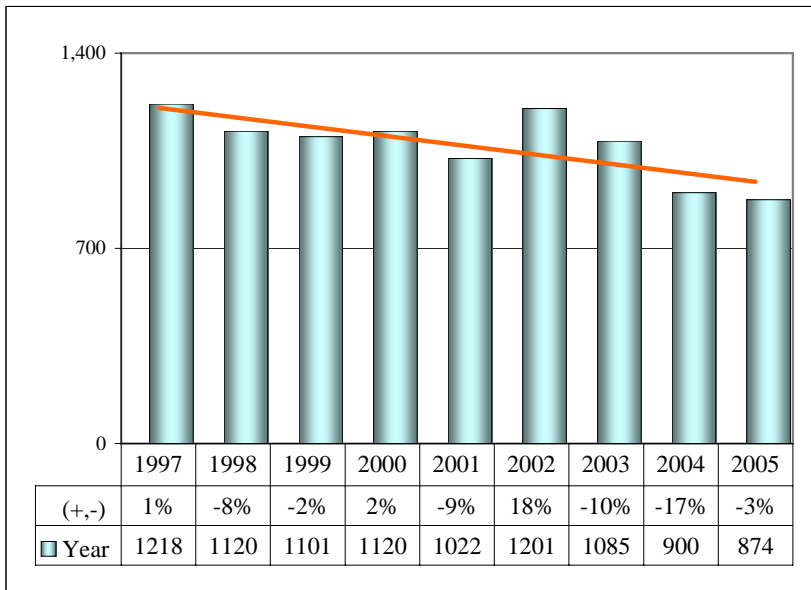


Offenses 0610, 25, 50; attempts included

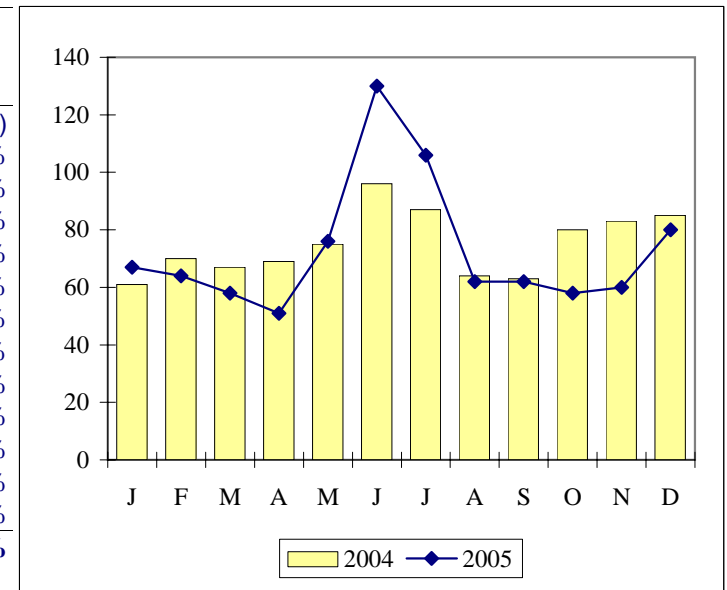
CRIMES - PROPERTY			
Theft			
	2004	2005	(+, -)
Jan	288	363	26%
Feb	291	311	7%
Mar	385	379	-2%
Apr	355	433	22%
May	419	425	1%
Jun	386	463	20%
Jul	391	455	16%
Aug	446	457	2%
Sep	428	421	-2%
Oct	302	418	38%
Nov	402	378	-6%
Dec	415	345	-17%
YEAR	4,508	4,848	8%



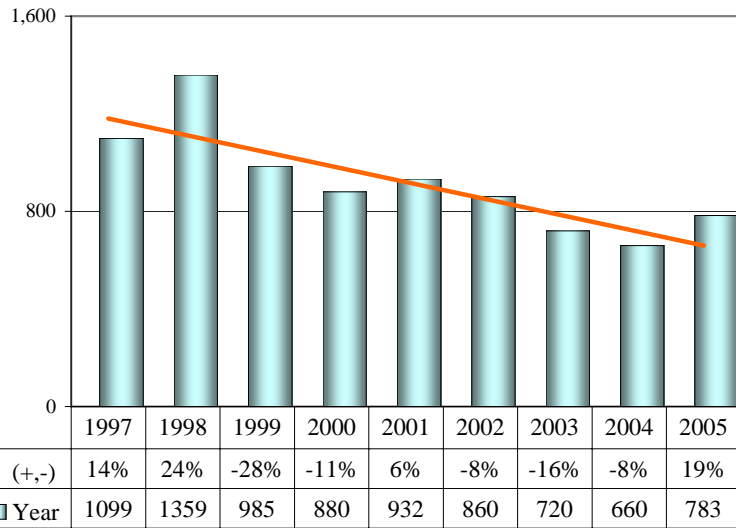
Data source: Records Dept UCR report



CRIMES - PROPERTY			
Theft Arrests			
	2,004	2,005	(+, -)
Jan	61	67	10%
Feb	70	64	-9%
Mar	67	58	-13%
Apr	69	51	-26%
May	75	76	1%
Jun	96	130	35%
Jul	87	106	22%
Aug	64	62	-3%
Sep	63	62	-2%
Oct	80	58	-28%
Nov	83	60	-28%
Dec	85	80	-6%
YEAR	900	874	-3%

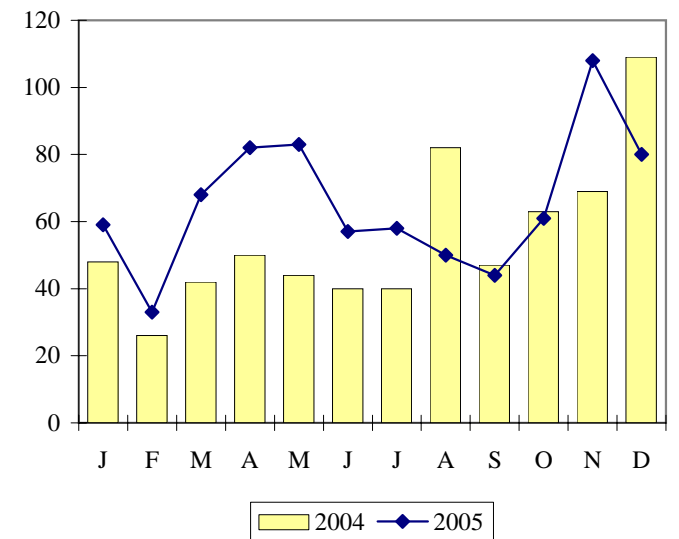


Data source: Records Dept UCR report

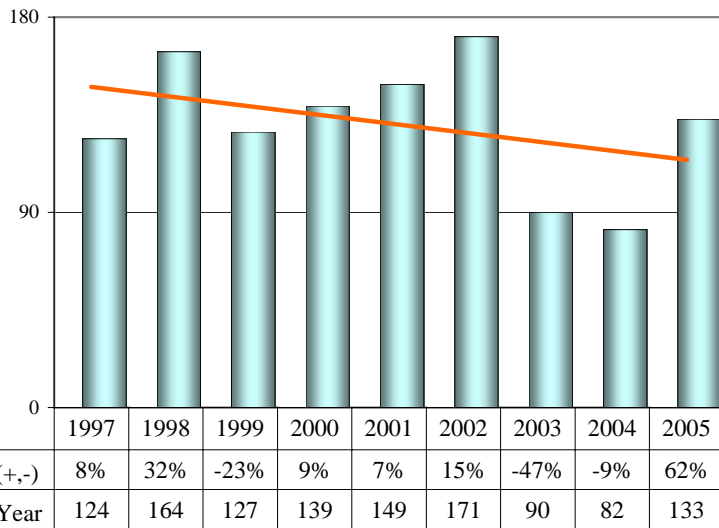


CRIMES - PROPERTY Motor Vehicle Theft

	2004	2005	(+, -)
Jan	48	59	23%
Feb	26	33	27%
Mar	42	68	62%
Apr	50	82	64%
May	44	83	89%
Jun	40	57	43%
Jul	40	58	45%
Aug	82	50	-39%
Sep	47	44	-6%
Oct	63	61	-3%
Nov	69	108	57%
Dec	109	80	-27%
YEAR	660	783	19%

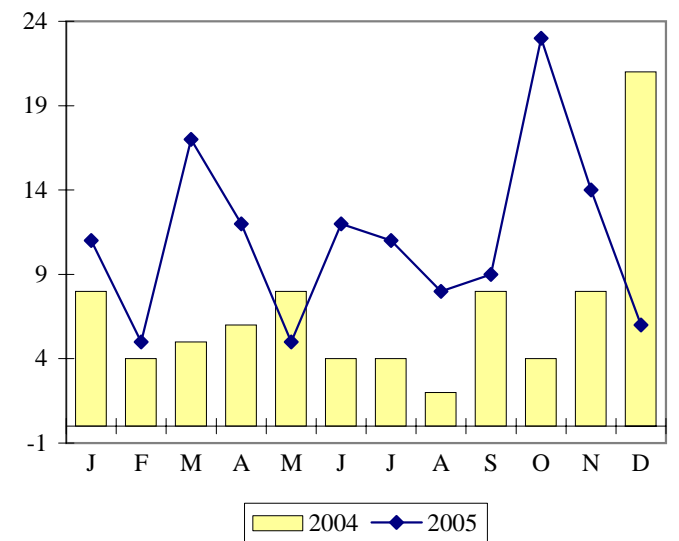


Data source: Records Dept UCR report

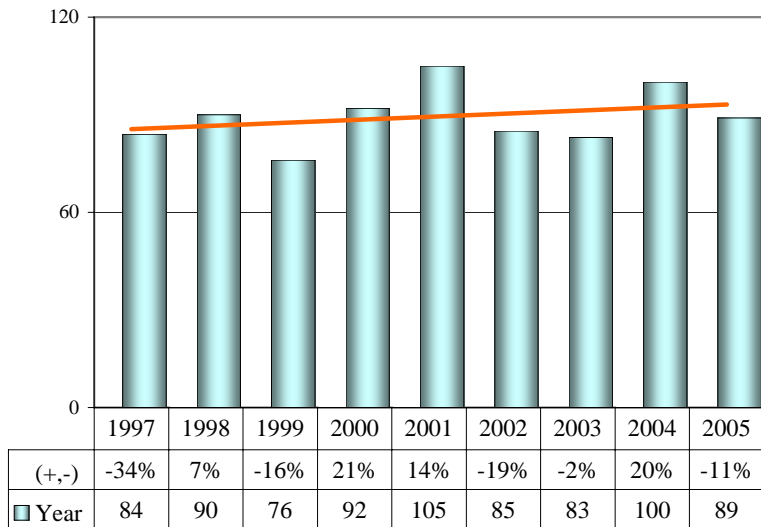


CRIMES - PROPERTY Motor Vehicle Theft Arrests

	2004	2005	(+, -)
Jan	8	11	38%
Feb	4	5	25%
Mar	5	17	240%
Apr	6	12	100%
May	8	5	-38%
Jun	4	12	200%
Jul	4	11	175%
Aug	2	8	300%
Sep	8	9	13%
Oct	4	23	475%
Nov	8	14	75%
Dec	21	6	-71%
YEAR	82	133	62%



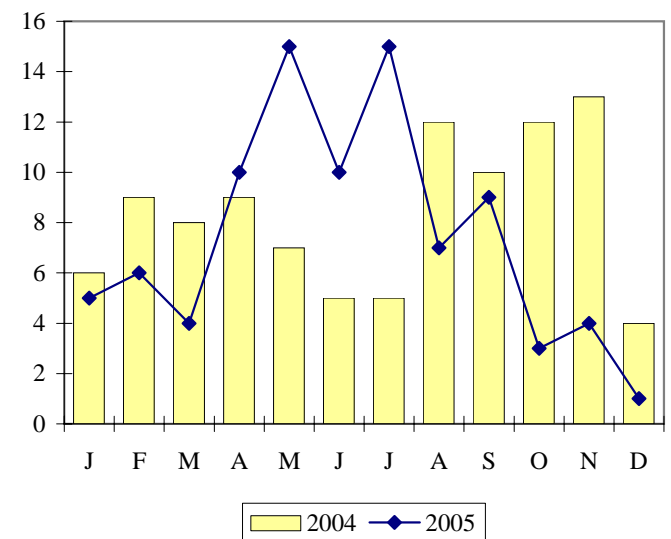
Data source: Records Dept UCR report



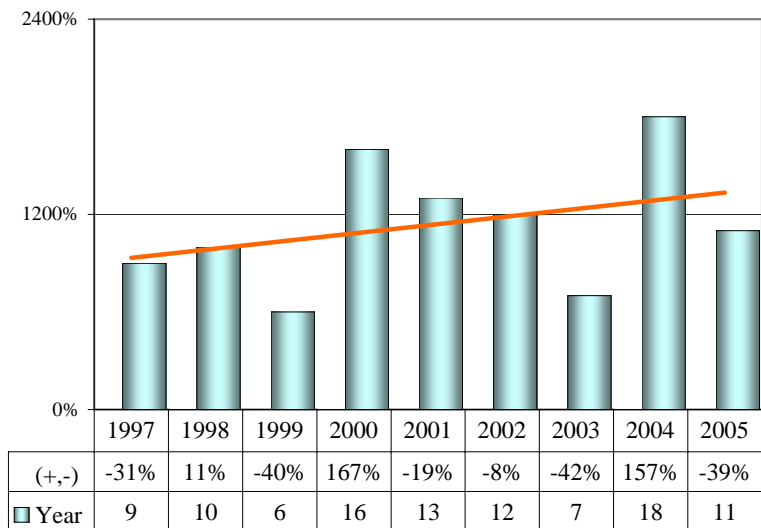
CRIMES - PROPERTY

Arson

	2004	2005	(+, -)
Jan	6	5	-17%
Feb	9	6	-33%
Mar	8	4	-50%
Apr	9	10	11%
May	7	15	114%
Jun	5	10	100%
Jul	5	15	200%
Aug	12	7	-42%
Sep	10	9	-10%
Oct	12	3	-75%
Nov	13	4	-69%
Dec	4	1	-75%
YEAR	100	89	-11%



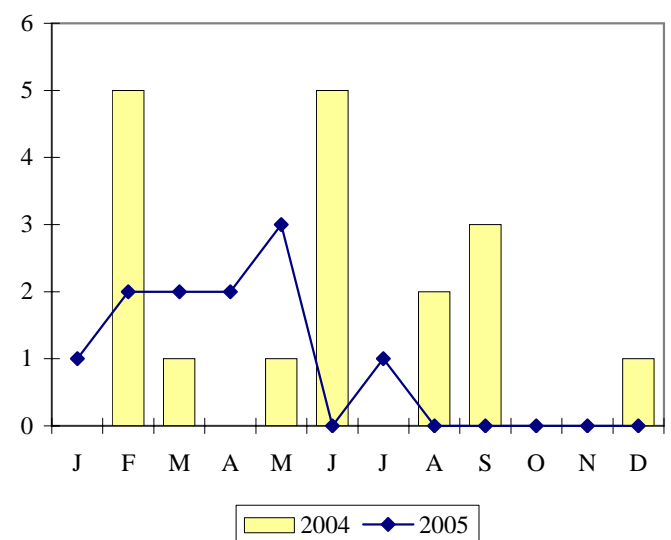
Data source: Records Dept UCR report



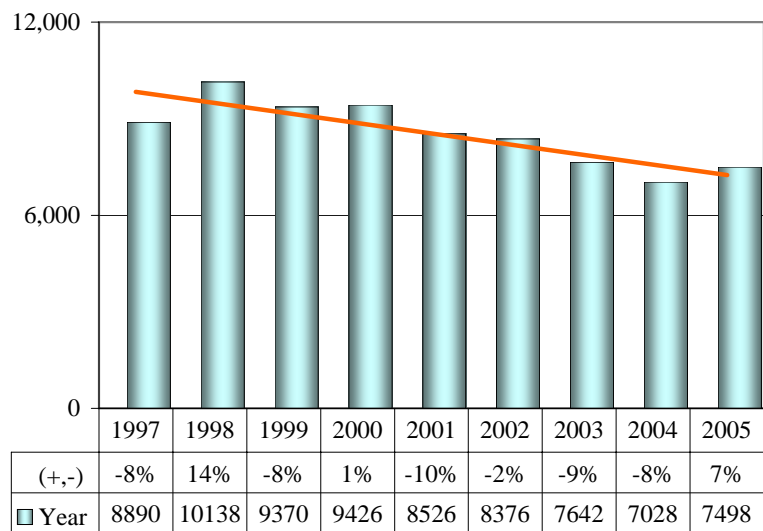
CRIMES - PROPERTY

Arson Arrests

	2004	2005	(+, -)
Jan	0	1	100%
Feb	5	2	-60%
Mar	1	2	100%
Apr	0	2	200%
May	1	3	200%
Jun	5	0	-100%
Jul	0	1	100%
Aug	2	0	-100%
Sep	3	0	-300%
Oct	0	0	0%
Nov	0	0	0%
Dec	1	0	-100%
YEAR	18	11	-39%



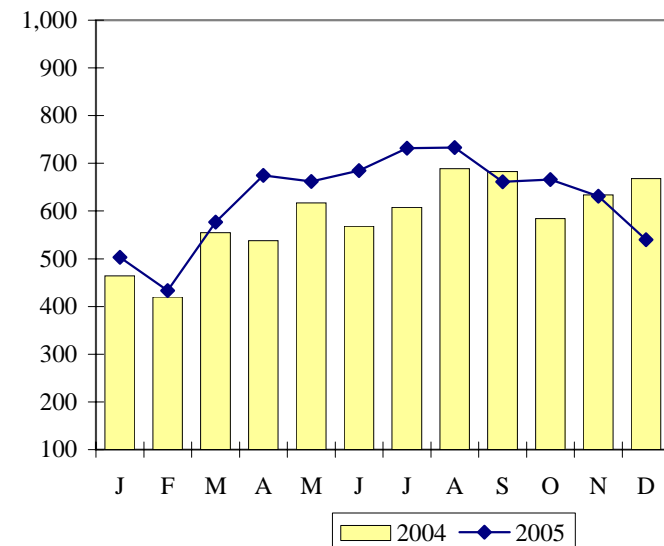
Data source: Records Dept UCR report



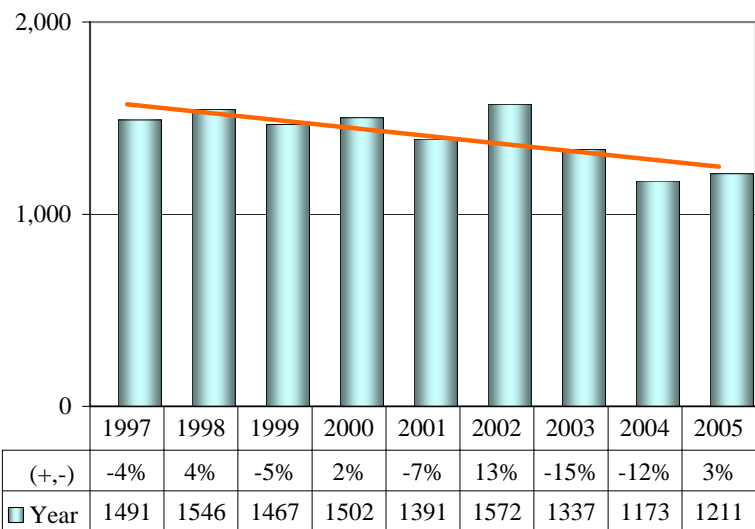
CRIMES - PROPERTY

Total

	2004	2005	(+, -)
Jan	464	503	8%
Feb	420	433	3%
Mar	555	577	4%
Apr	538	675	25%
May	617	662	7%
Jun	568	685	21%
Jul	608	732	20%
Aug	689	733	6%
Sep	683	661	-3%
Oct	584	666	14%
Nov	634	631	0%
Dec	668	540	-19%
YEAR	7,028	7,498	7%



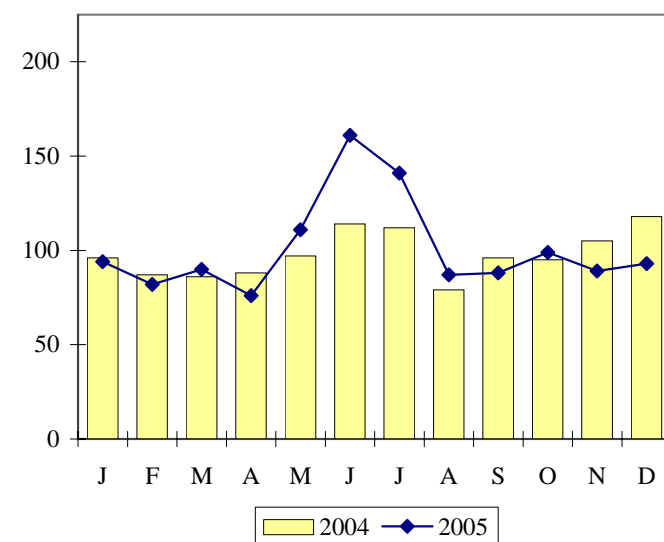
Data source: Records Dept UCR report



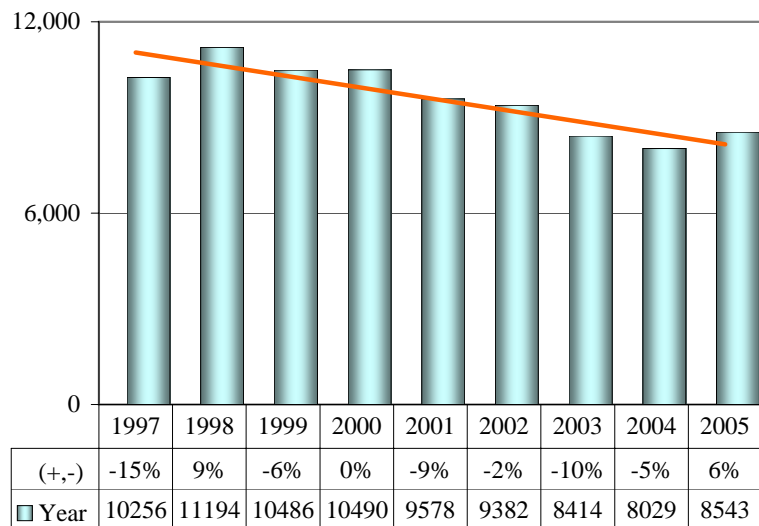
CRIMES - PROPERTY

Total Arrests

	2004	2005	(+, -)
Jan	96	94	-2%
Feb	87	82	-6%
Mar	86	90	5%
Apr	88	76	-14%
May	97	111	14%
Jun	114	161	41%
Jul	112	141	26%
Aug	79	87	10%
Sep	96	88	-8%
Oct	95	99	4%
Nov	105	89	-15%
Dec	118	93	-21%
YEAR	1,173	1,211	3%

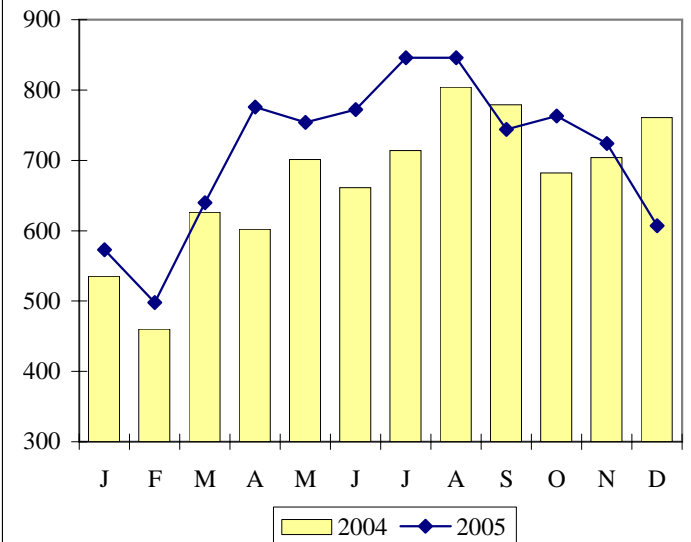


Data source: Records Dept UCR report

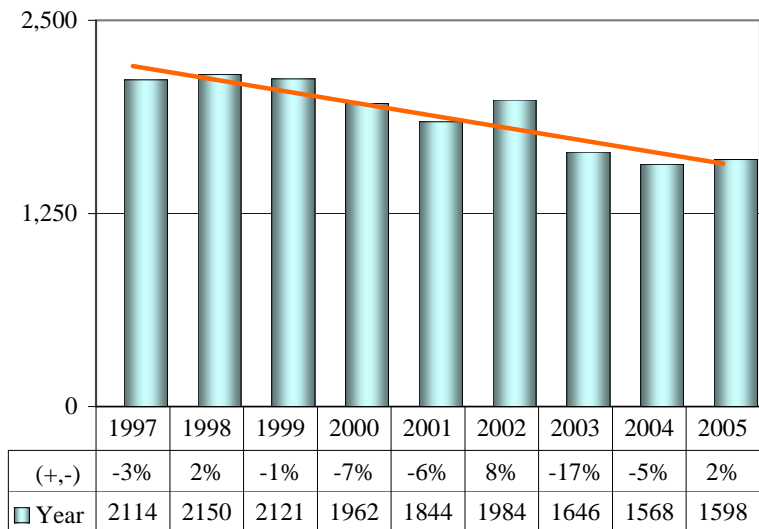


CRIMES VIOLENT & PROPERTY Total

	2004	2005	(+, -)
Jan	535	573	7%
Feb	460	498	8%
Mar	626	640	2%
Apr	602	776	29%
May	701	754	8%
Jun	661	772	17%
Jul	714	846	18%
Aug	804	846	5%
Sep	779	744	-4%
Oct	682	763	12%
Nov	704	724	3%
Dec	761	607	-20%
YEAR	8,029	8,543	6%

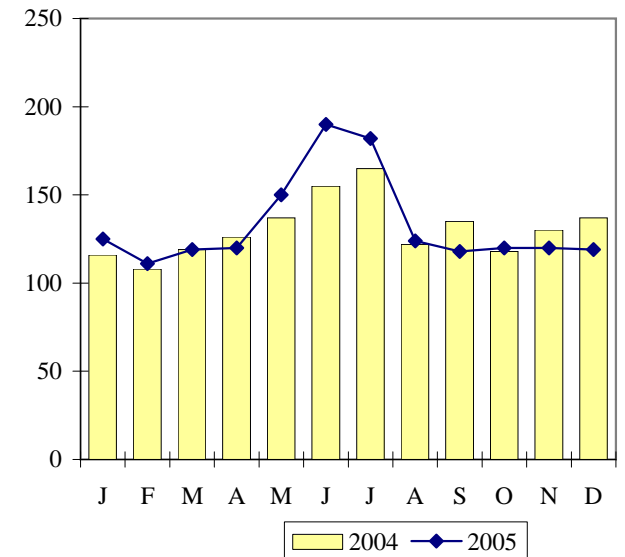


Data source: Records Dept UCR report

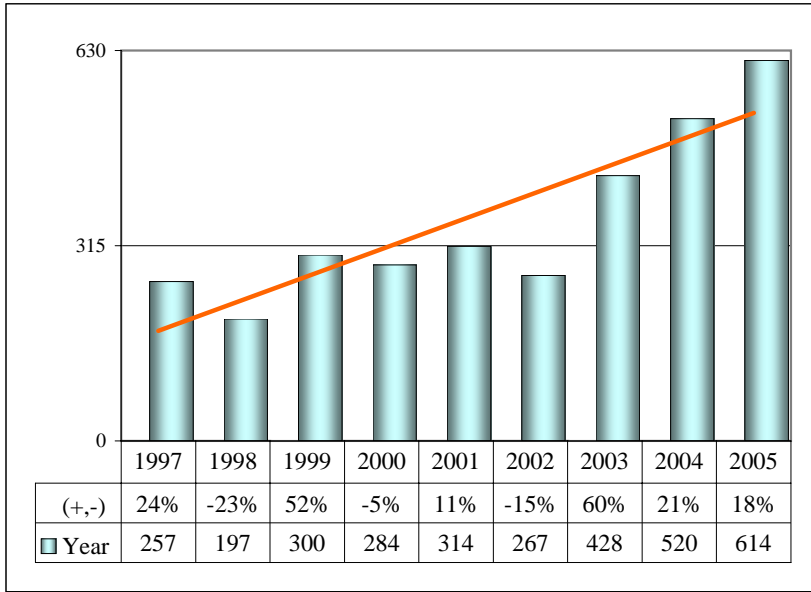


CRIMES VIOLENT & PROPERTY Violent and Property Total Arrests

	2004	2005	(+, -)
Jan	116	125	8%
Feb	108	111	3%
Mar	119	119	0%
Apr	126	120	-5%
May	137	150	9%
Jun	155	190	23%
Jul	165	182	10%
Aug	122	124	2%
Sep	135	118	-13%
Oct	118	120	2%
Nov	130	120	-8%
Dec	137	119	-13%
YEAR	1,568	1,598	2%

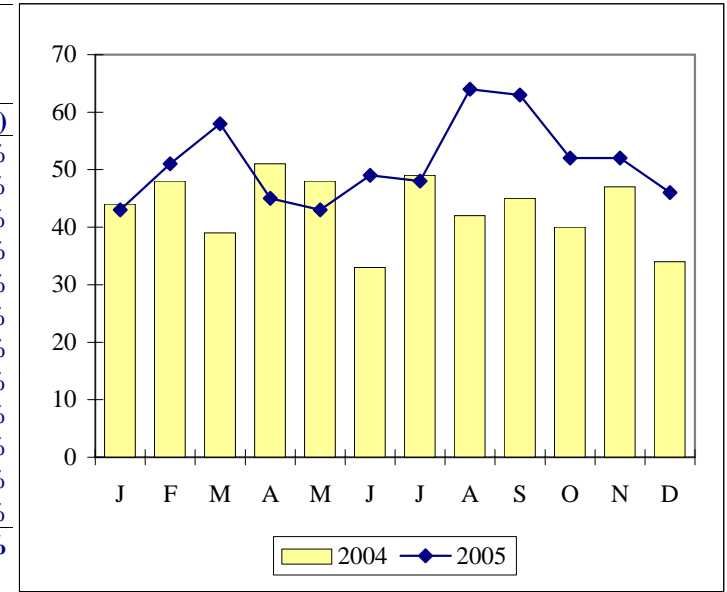


Data source: Records Dept UCR report

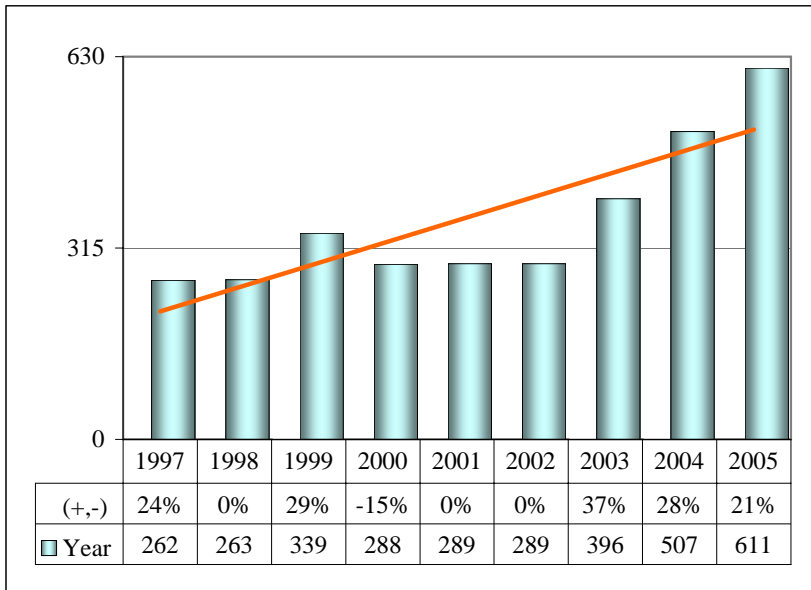


Offenses 1811, 12, 21, 22, 30, 40, 50, 60, 1900

DRUG ARRESTS			
Cannabis			
	2004	2005	(+, -)
Jan	44	43	-2%
Feb	48	51	6%
Mar	39	58	49%
Apr	51	45	-12%
May	48	43	-10%
Jun	33	49	48%
Jul	49	48	-2%
Aug	42	64	52%
Sep	45	63	40%
Oct	40	52	30%
Nov	47	52	11%
Dec	34	46	35%
YEAR	520	614	18%

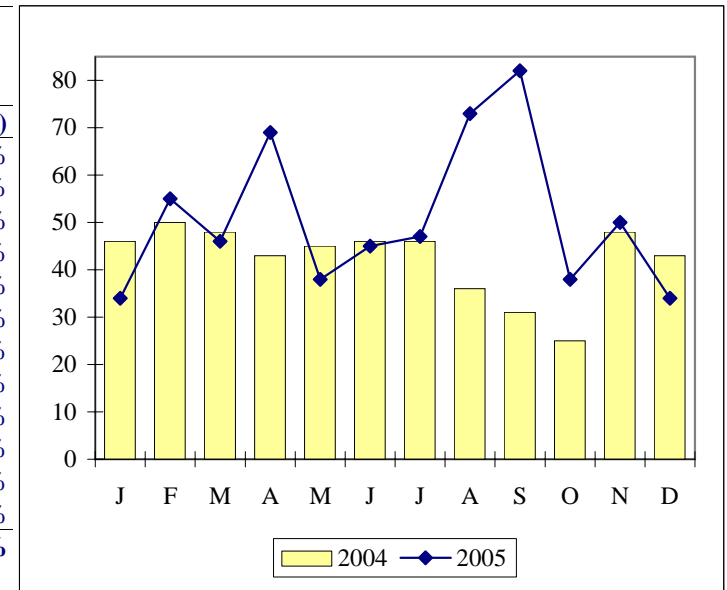


Data source: Records Dept UCR

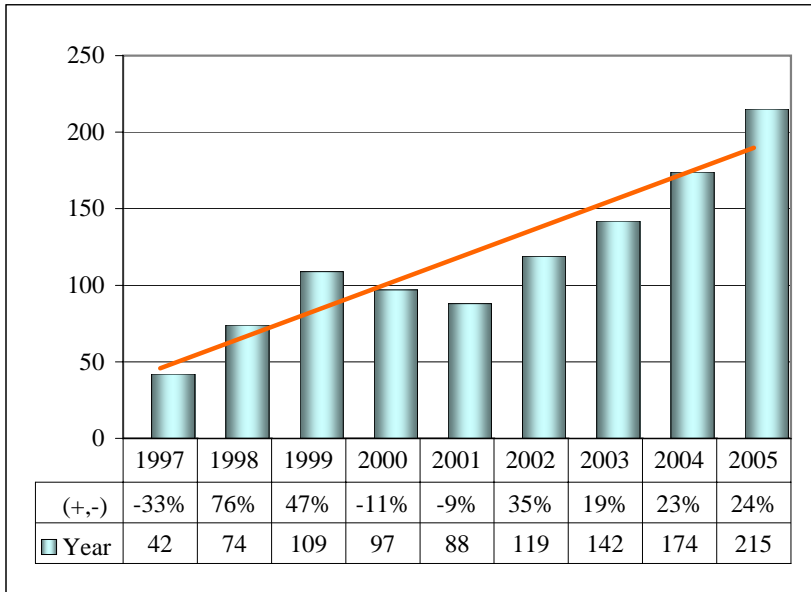


Offenses 2010, 20, 30, 40, 50, 60, 70, 80

DRUG ARRESTS			
Controlled Substances			
	2004	2005	(+, -)
Jan	46	34	-26%
Feb	50	55	10%
Mar	48	46	-4%
Apr	43	69	60%
May	45	38	-16%
Jun	46	45	-2%
Jul	46	47	2%
Aug	36	73	103%
Sep	31	82	165%
Oct	25	38	52%
Nov	48	50	4%
Dec	43	34	-21%
YEAR	507	611	21%

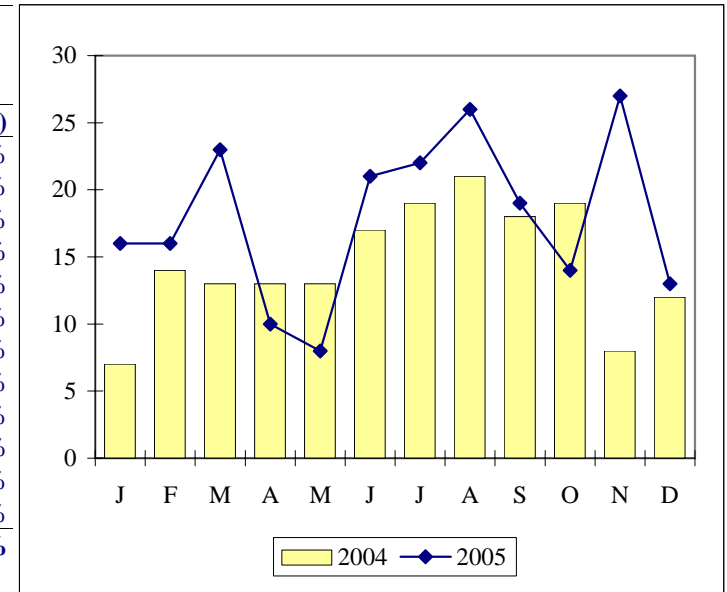


Data source: Records Dept UCR report

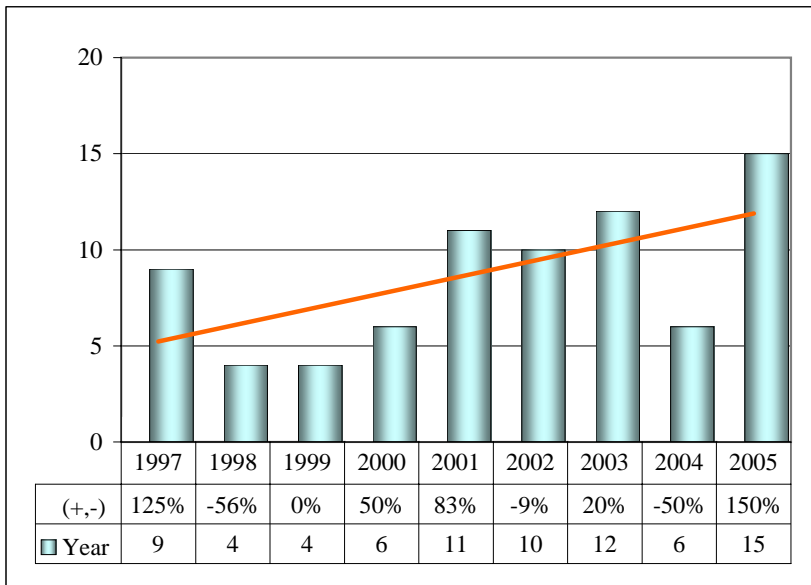


Offenses 2160, 70

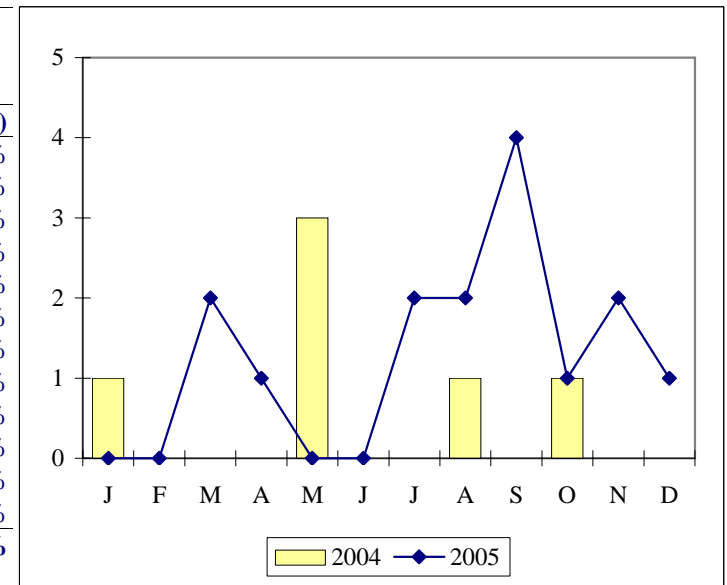
DRUG ARRESTS Drug Paraphernalia			
	2004	2005	(+, -)
Jan	7	16	129%
Feb	14	16	14%
Mar	13	23	77%
Apr	13	10	-23%
May	13	8	-38%
Jun	17	21	24%
Jul	19	22	16%
Aug	21	26	24%
Sep	18	19	6%
Oct	19	14	-26%
Nov	8	27	238%
Dec	12	13	8%
YEAR	174	215	24%



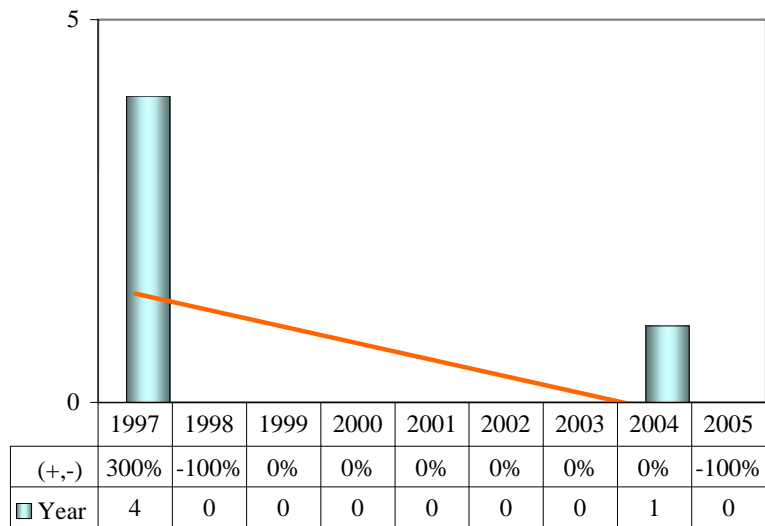
Data source: Records Dept UCR report



DRUG ARRESTS Needles & Syringes			
	2004	2005	(+, -)
Jan	1	0	-100%
Feb	0	0	0%
Mar	0	2	200%
Apr	0	1	100%
May	3	0	-100%
Jun	0	0	0%
Jul	0	2	200%
Aug	1	2	100%
Sep	0	4	400%
Oct	1	1	0%
Nov	0	2	200%
Dec	0	1	100%
YEAR	6	15	150%



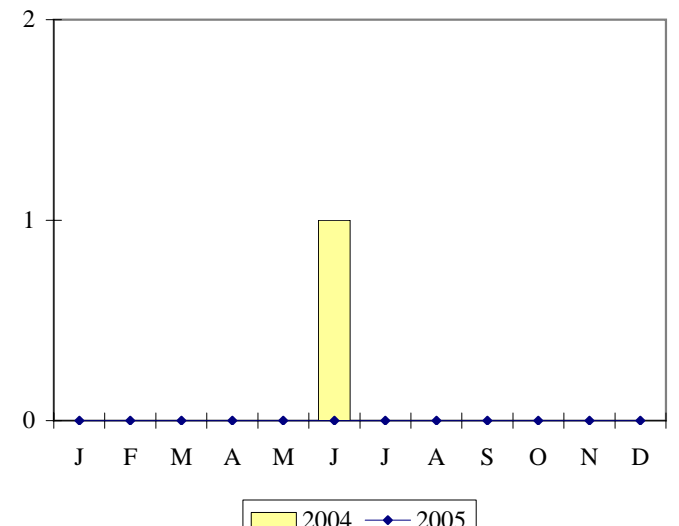
Data source: Records Dept UCR report



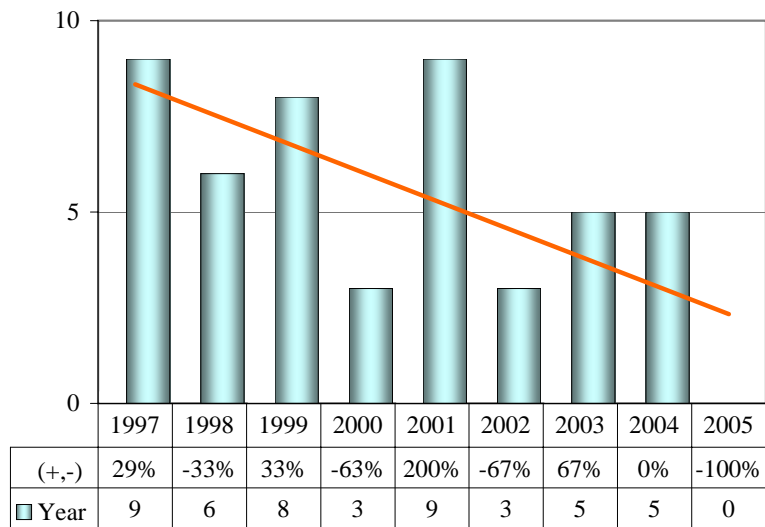
JUVENILE ARRESTS

Murder

	2004	2005	(+, -)
Jan	0	0	0%
Feb	0	0	0%
Mar	0	0	0%
Apr	0	0	0%
May	0	0	0%
Jun	1	0	-100%
Jul	0	0	0%
Aug	0	0	0%
Sep	0	0	0%
Oct	0	0	0%
Nov	0	0	0%
Dec	0	0	0%
YEAR	1	0	-100%



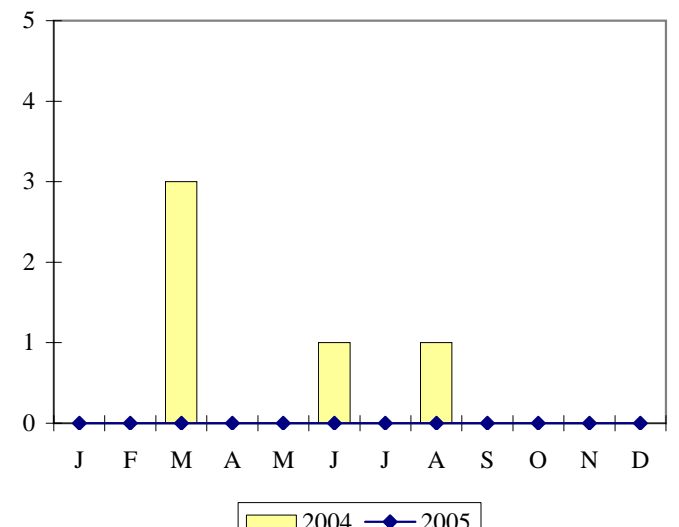
Data source: I.S. Dept / juv-part report



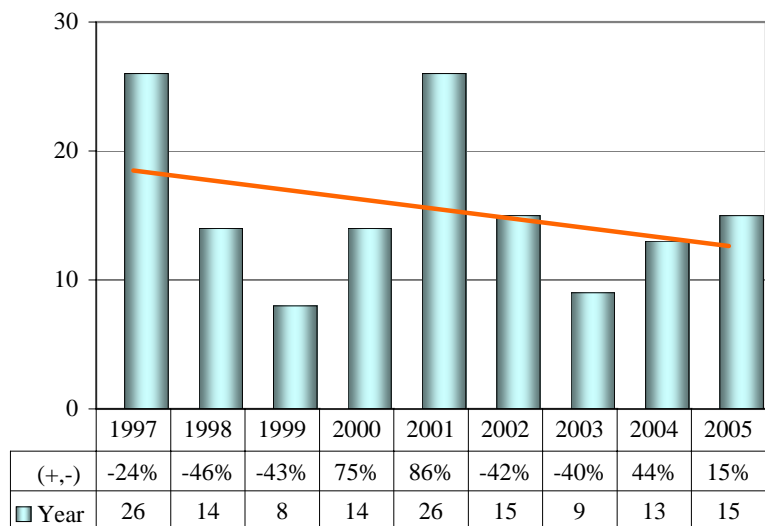
JUVENILE ARRESTS

Criminal Sexual Assault

	2004	2005	(+, -)
Jan	0	0	0%
Feb	0	0	0%
Mar	3	0	-100%
Apr	0	0	0%
May	0	0	0%
Jun	1	0	-100%
Jul	0	0	0%
Aug	1	0	-100%
Sep	0	0	0%
Oct	0	0	0%
Nov	0	0	0%
Dec	0	0	0%
YEAR	5	0	-100%



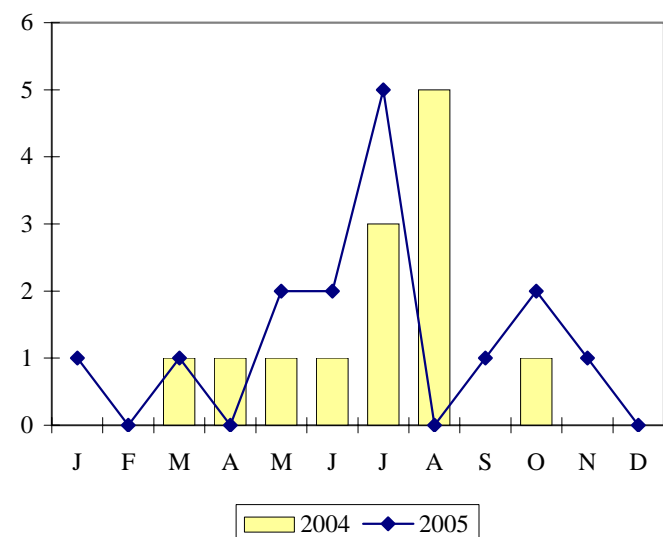
Data source: I.S. Dept / juv-part report



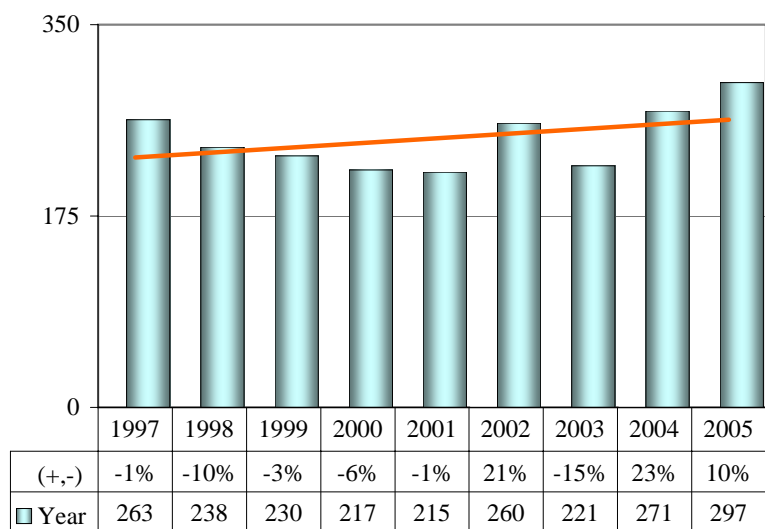
JUVENILE ARRESTS

Robbery

	2004	2005	(+, -)
Jan	0	1	100%
Feb	0	0	0%
Mar	1	1	0%
Apr	1	0	-100%
May	1	2	100%
Jun	1	2	100%
Jul	3	5	67%
Aug	5	0	-100%
Sep	0	1	100%
Oct	1	2	100%
Nov	0	1	100%
Dec	0	0	0%
YEAR	13	15	15%



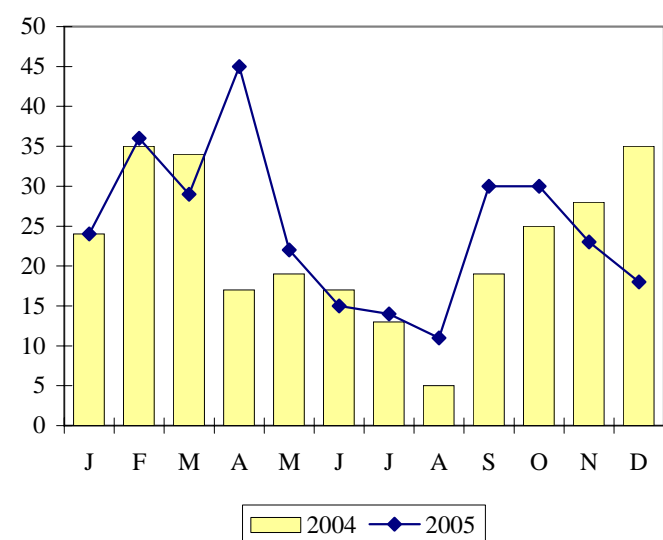
Data source: I.S. Dept / juv-part report



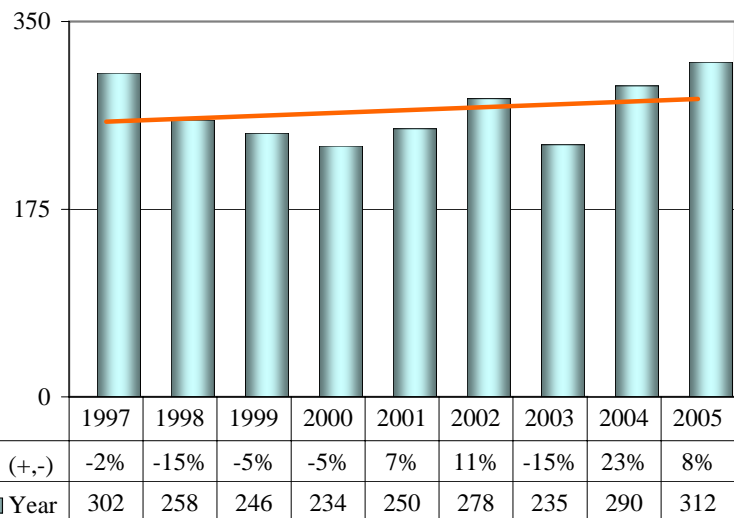
JUVENILE ARRESTS

Aggravated Assault / Battery

	2004	2005	(+, -)
Jan	24	24	0%
Feb	35	36	3%
Mar	34	29	-15%
Apr	17	45	165%
May	19	22	16%
Jun	17	15	-12%
Jul	13	14	8%
Aug	5	11	120%
Sep	19	30	58%
Oct	25	30	20%
Nov	28	23	-18%
Dec	35	18	-49%
YEAR	271	297	10%



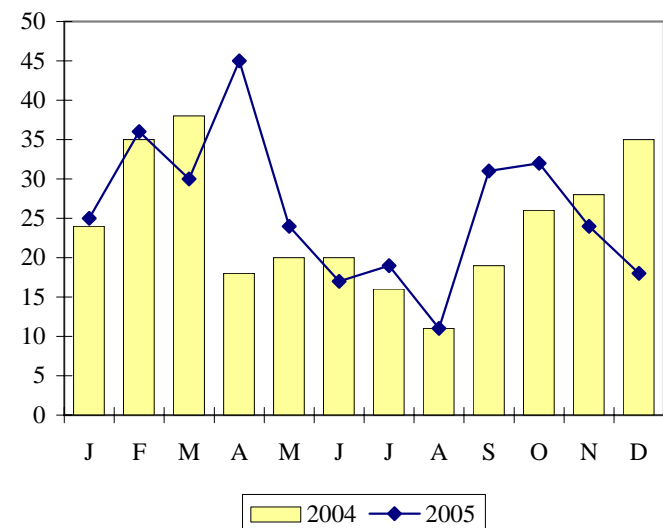
Data source: I.S. Dept / juv-part report



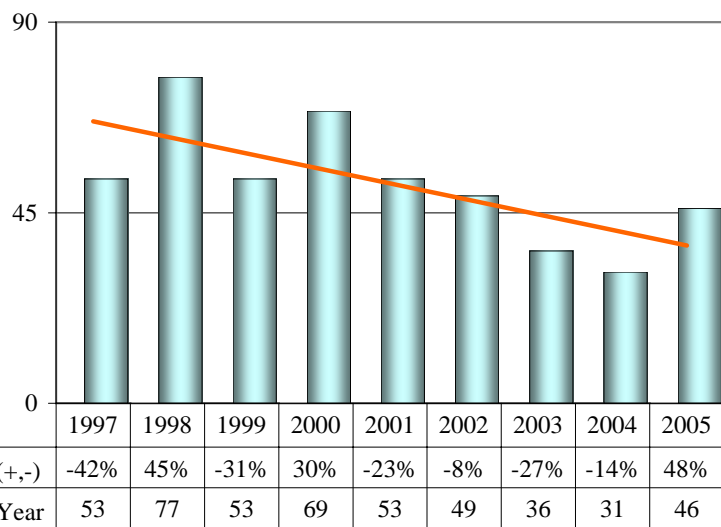
JUVENILE ARRESTS

Violent Total

	2004	2005	(+, -)
Jan	24	25	4%
Feb	35	36	3%
Mar	38	30	-21%
Apr	18	45	150%
May	20	24	20%
Jun	20	17	-15%
Jul	16	19	19%
Aug	11	11	0%
Sep	19	31	63%
Oct	26	32	23%
Nov	28	24	-14%
Dec	35	18	-49%
YEAR	290	312	8%



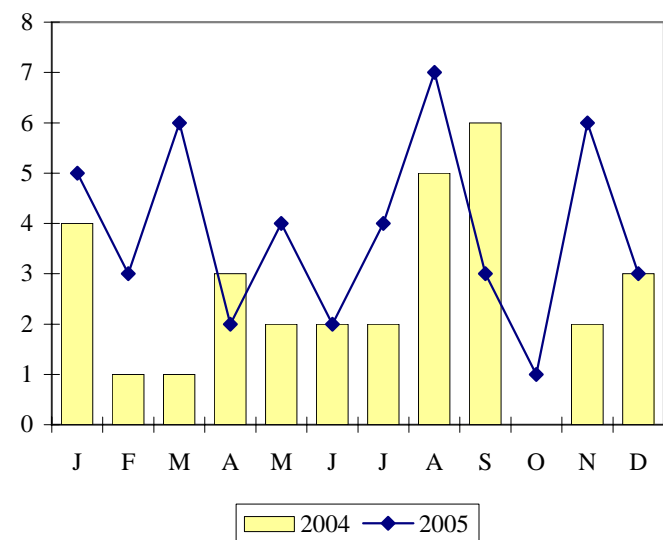
Data source: I.S. Dept / juv-part report



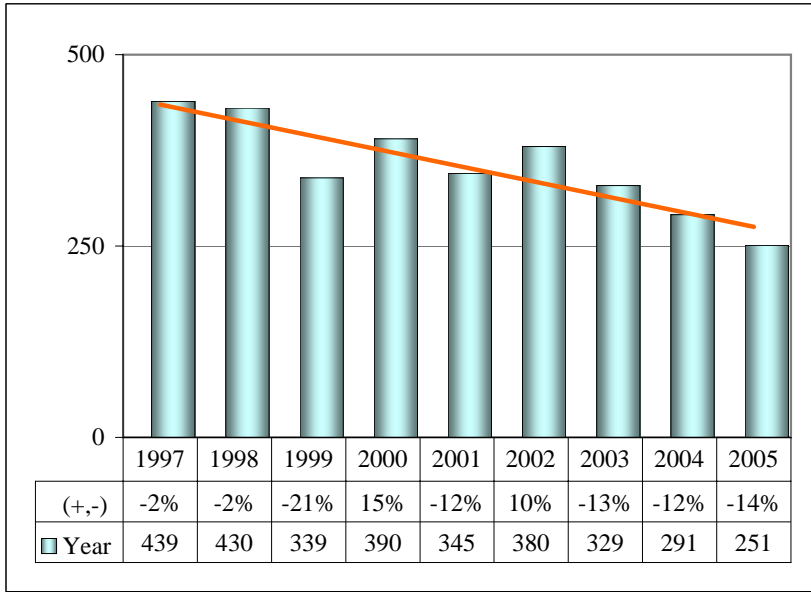
JUVENILE ARRESTS

Burglary

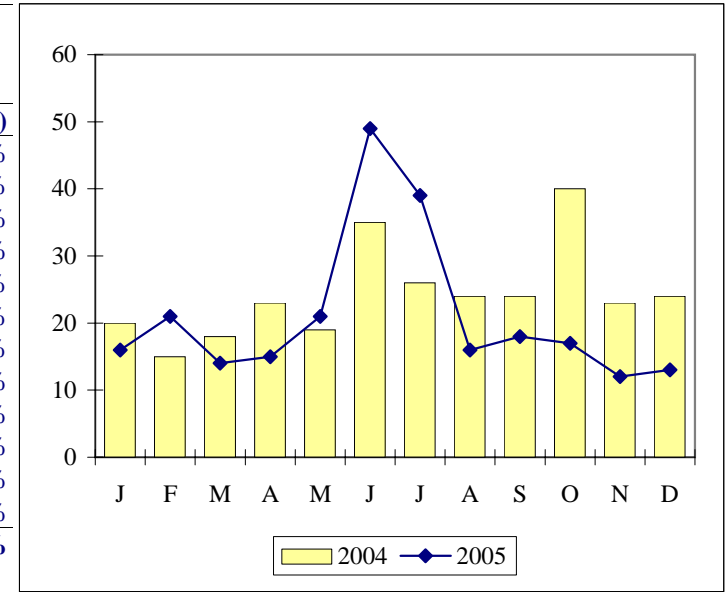
	2004	2005	(+, -)
Jan	4	5	25%
Feb	1	3	200%
Mar	1	6	500%
Apr	3	2	-33%
May	2	4	100%
Jun	2	2	0%
Jul	2	4	100%
Aug	5	7	40%
Sep	6	3	-50%
Oct	0	1	100%
Nov	2	6	100%
Dec	3	3	0%
YEAR	31	46	48%



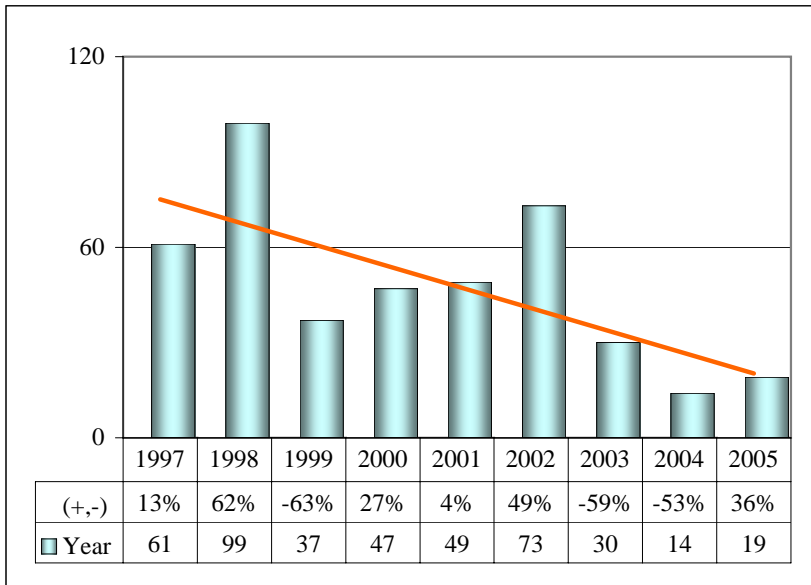
Data source: I.S. Dept / juv-part report



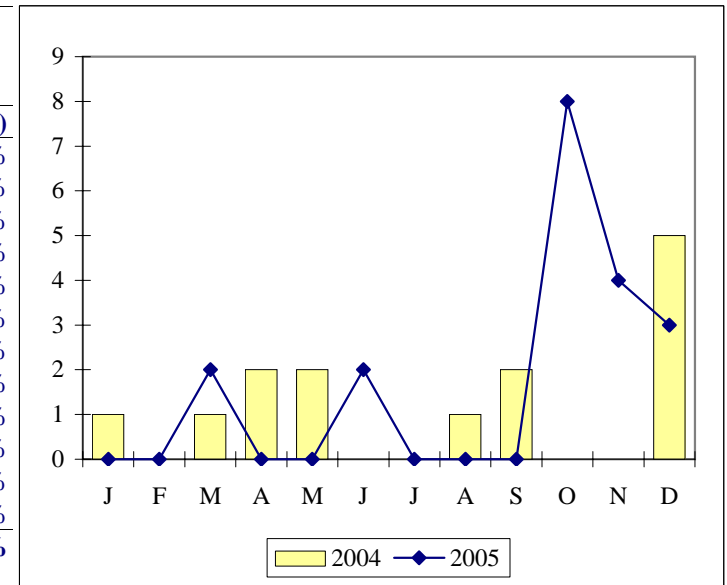
JUVENILE ARRESTS			
Theft			
	2004	2005	(+, -)
Jan	20	16	-20%
Feb	15	21	40%
Mar	18	14	-22%
Apr	23	15	-35%
May	19	21	11%
Jun	35	49	40%
Jul	26	39	50%
Aug	24	16	-33%
Sep	24	18	-25%
Oct	40	17	-58%
Nov	23	12	-48%
Dec	24	13	-46%
YEAR	291	251	-14%



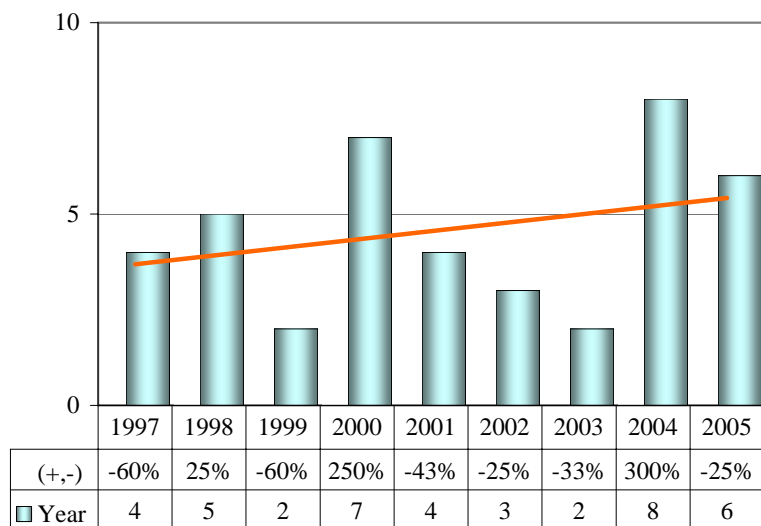
Data source: I.S. Dept / juv-part report



JUVENILE ARRESTS			
Motor Vehicle Theft			
	2004	2005	(+, -)
Jan	1	0	-100%
Feb	0	0	0%
Mar	1	2	100%
Apr	2	0	-100%
May	2	0	-100%
Jun	0	2	200%
Jul	0	0	0%
Aug	1	0	-100%
Sep	2	0	-100%
Oct	0	8	800%
Nov	0	4	400%
Dec	5	3	-40%
YEAR	14	19	36%



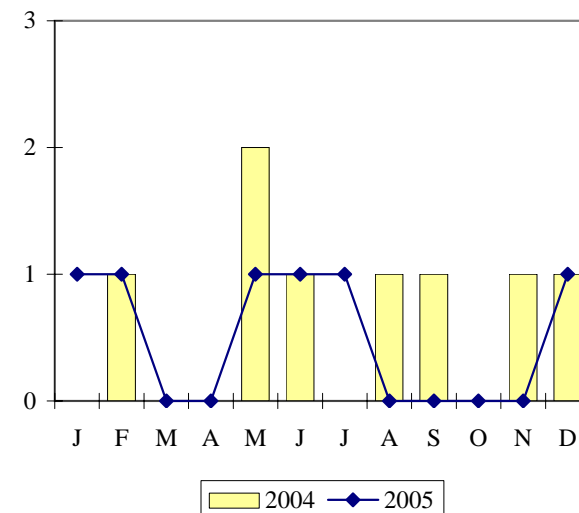
Data source: I.S. Dept / juv-part report



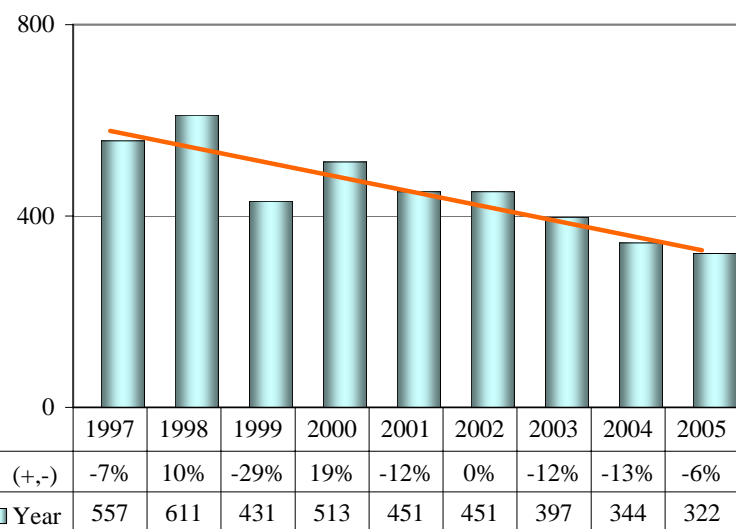
JUVENILE ARRESTS

Arson

	2004	2005	(+, -)
Jan	0	1	100%
Feb	1	1	100%
Mar	0	0	0%
Apr	0	0	0%
May	2	1	-50%
Jun	1	1	0%
Jul	0	1	100%
Aug	1	0	-100%
Sep	1	0	-100%
Oct	0	0	0%
Nov	1	0	-100%
Dec	1	1	0%
YEAR	8	6	-25%



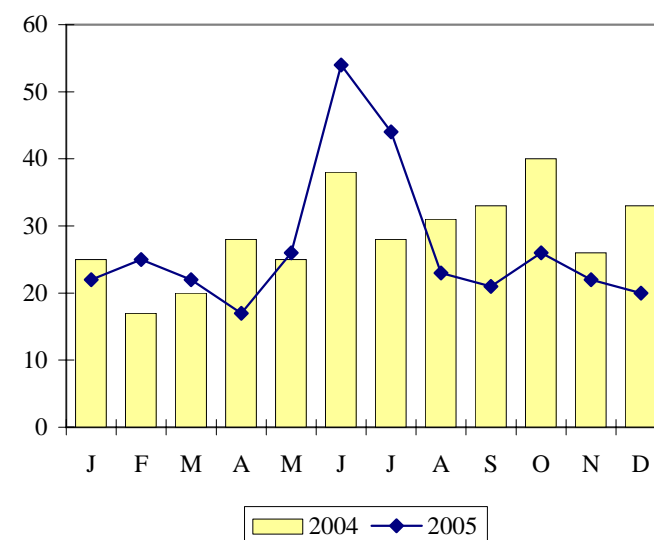
Data source: I.S. Dept / juv-part report



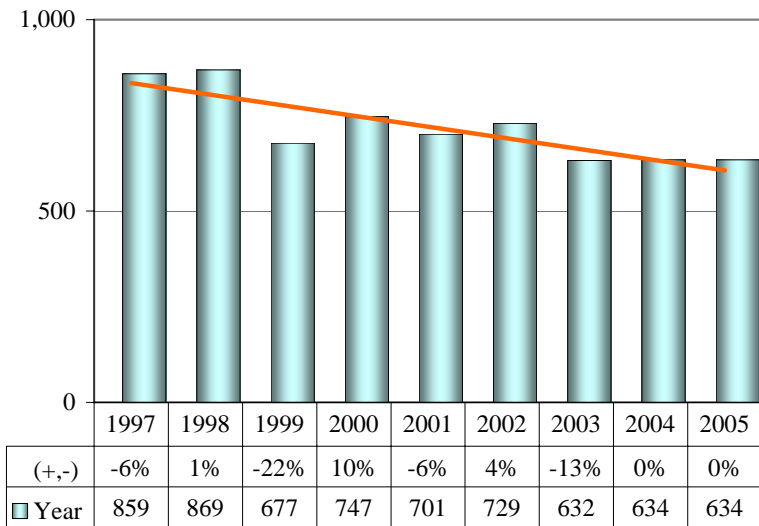
JUVENILE ARRESTS

Property Total

	2004	2005	(+, -)
Jan	25	22	-12%
Feb	17	25	47%
Mar	20	22	10%
Apr	28	17	-39%
May	25	26	4%
Jun	38	54	42%
Jul	28	44	57%
Aug	31	23	-26%
Sep	33	21	-36%
Oct	40	26	-35%
Nov	26	22	-15%
Dec	33	20	-39%
YEAR	344	322	-6%

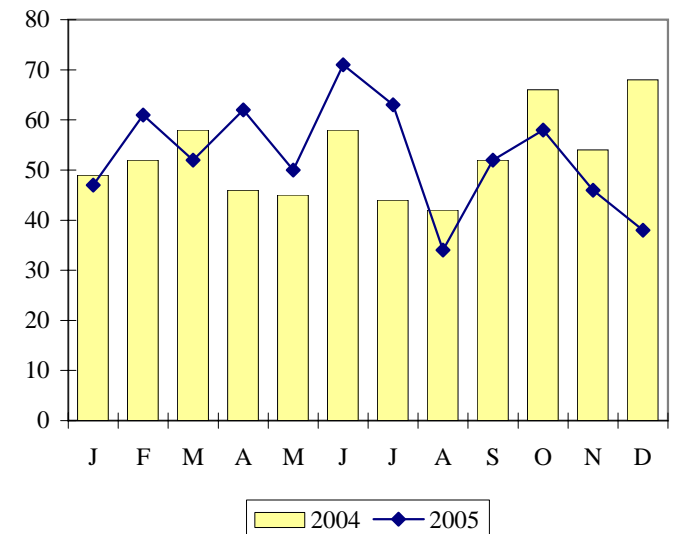


Data source: I.S. Dept / juv-part report

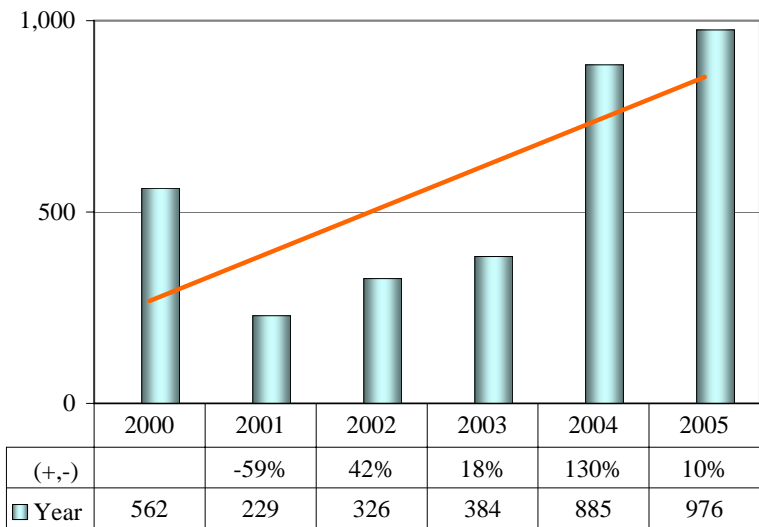


JUVENILE ARRESTS Violent and Property Total

	2004	2005	(+, -)
Jan	49	47	-4%
Feb	52	61	17%
Mar	58	52	-10%
Apr	46	62	35%
May	45	50	11%
Jun	58	71	22%
Jul	44	63	43%
Aug	42	34	-19%
Sep	52	52	0%
Oct	66	58	-12%
Nov	54	46	-15%
Dec	68	38	-44%
YEAR	634	634	0%



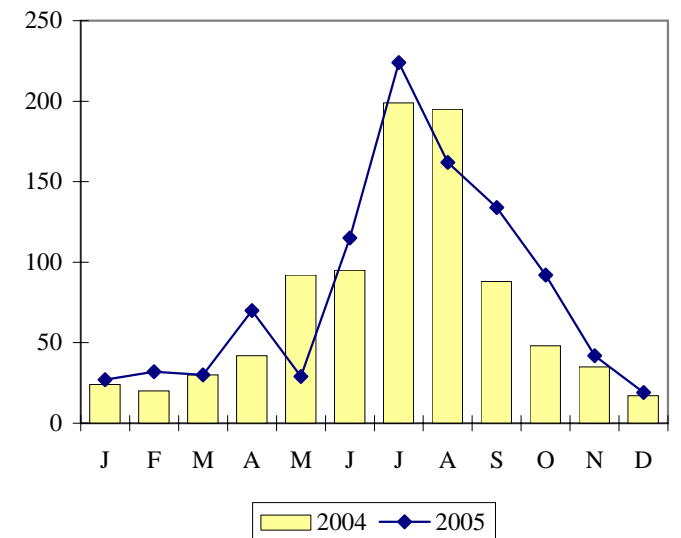
Data source: I.S. Dept / juv-part report



MUNICIPAL ORDINANCES

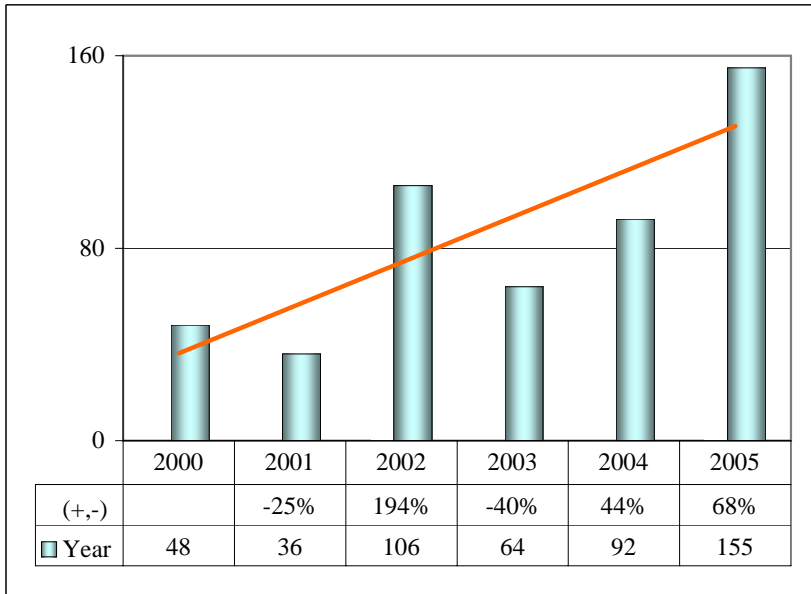
Noise

	2004	2005	(+, -)
Jan	24	27	13%
Feb	20	32	60%
Mar	30	30	0%
Apr	42	70	67%
May	92	29	-68%
Jun	95	115	21%
Jul	199	224	13%
Aug	195	162	-17%
Sep	88	134	52%
Oct	48	92	92%
Nov	35	42	20%
Dec	17	19	12%
YEAR	885	976	10%



Data source: Records Dept / MOVN report

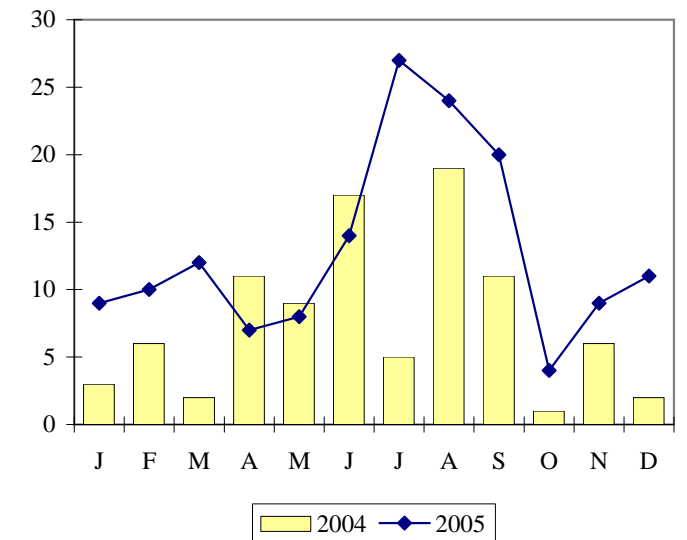
Ordinances 15-061, 062, 063, 064, 070, 071, 074, 075, 101



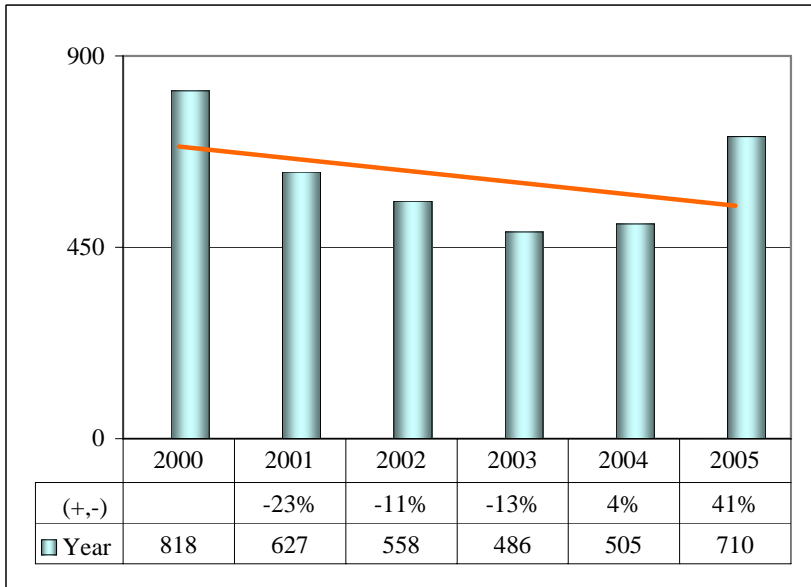
Ordinances 11-161, 13-003, 37, 41, 045, 046, 77, 101, 102, 15-2A9C

MUNICIPAL ORDINANCES Trash and Litter

	2004	2005	(+, -)
Jan	3	9	200%
Feb	6	10	67%
Mar	2	12	500%
Apr	11	7	-36%
May	9	8	-11%
Jun	17	14	-18%
Jul	5	27	440%
Aug	19	24	26%
Sep	11	20	82%
Oct	1	4	300%
Nov	6	9	50%
Dec	2	11	450%
YEAR	92	155	68%



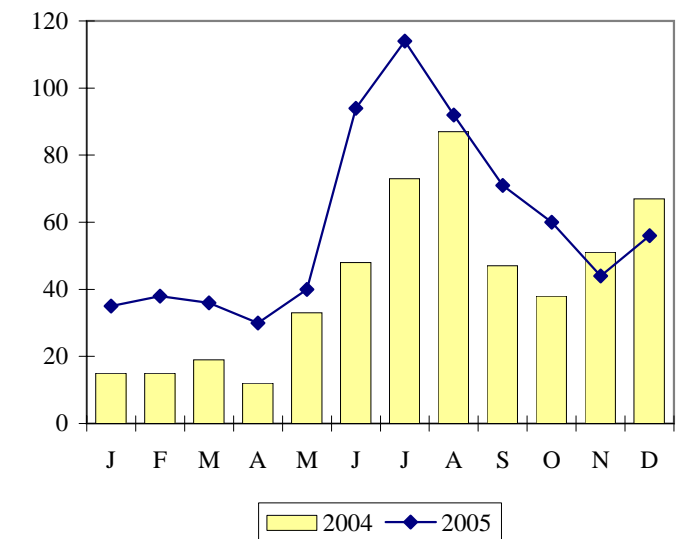
Data source: Records Dept / MOVN report



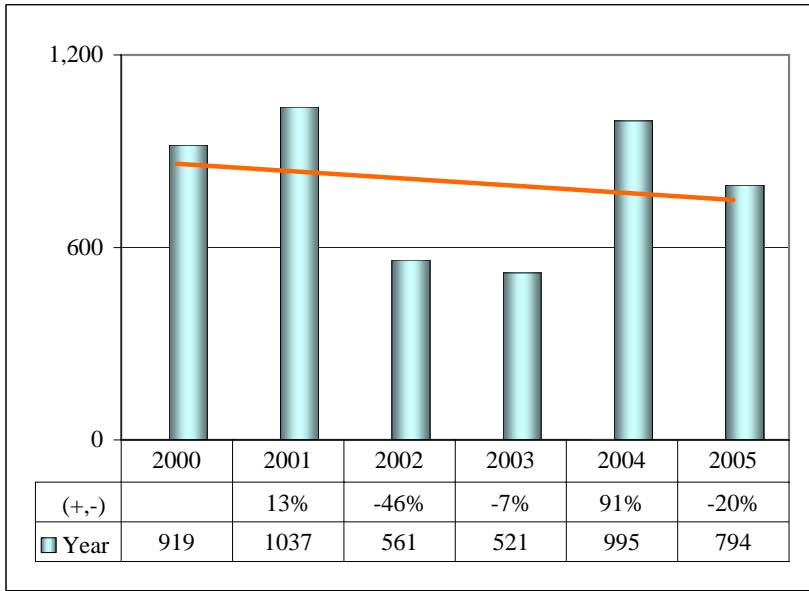
Ordinances 20-71, 72, 73, 79

MUNICIPAL ORDINANCES Curfew

	2004	2005	(+, -)
Jan	15	35	133%
Feb	15	38	153%
Mar	19	36	89%
Apr	12	30	150%
May	33	40	21%
Jun	48	94	96%
Jul	73	114	56%
Aug	87	92	6%
Sep	47	71	51%
Oct	38	60	58%
Nov	51	44	-14%
Dec	67	56	-16%
YEAR	505	710	41%

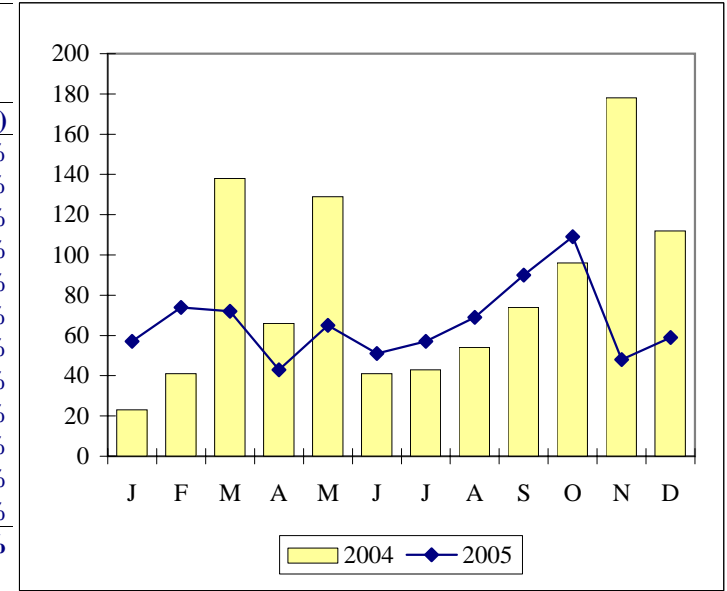


Data source: Records Dept / MOVN report

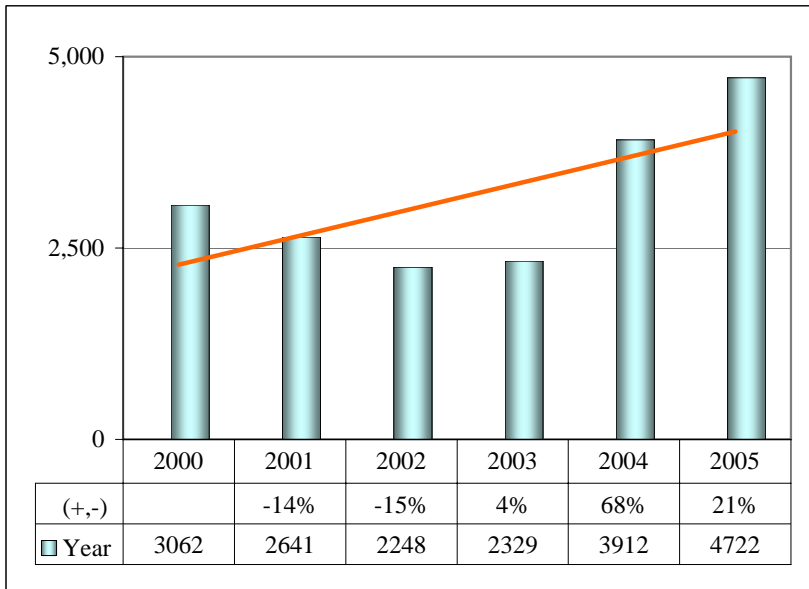


Ordinances 3-07, 08, 09, 20-104

MUNICIPAL ORDINANCES			
Alcohol by Minor			
	2004	2005	(+, -)
Jan	23	57	148%
Feb	41	74	80%
Mar	138	72	-48%
Apr	66	43	-35%
May	129	65	-50%
Jun	41	51	24%
Jul	43	57	33%
Aug	54	69	28%
Sep	74	90	22%
Oct	96	109	14%
Nov	178	48	-73%
Dec	112	59	-47%
YEAR	995	794	-20%

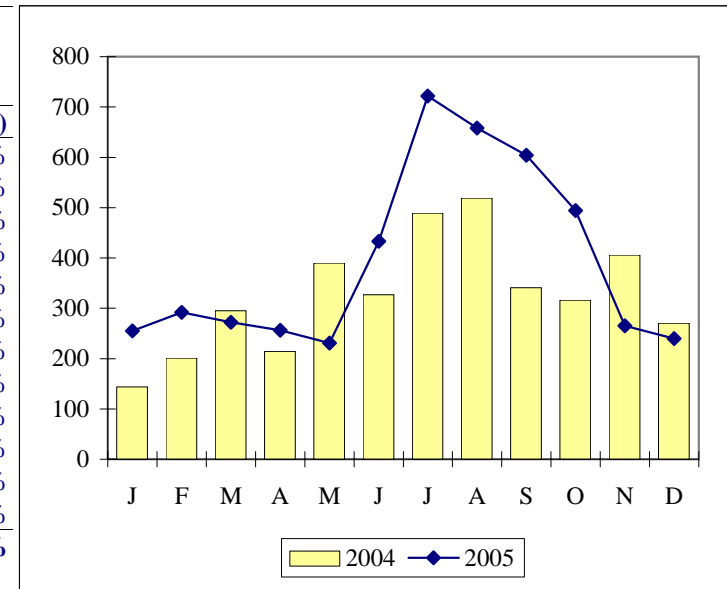


Data source: Records Dept / MOVN report

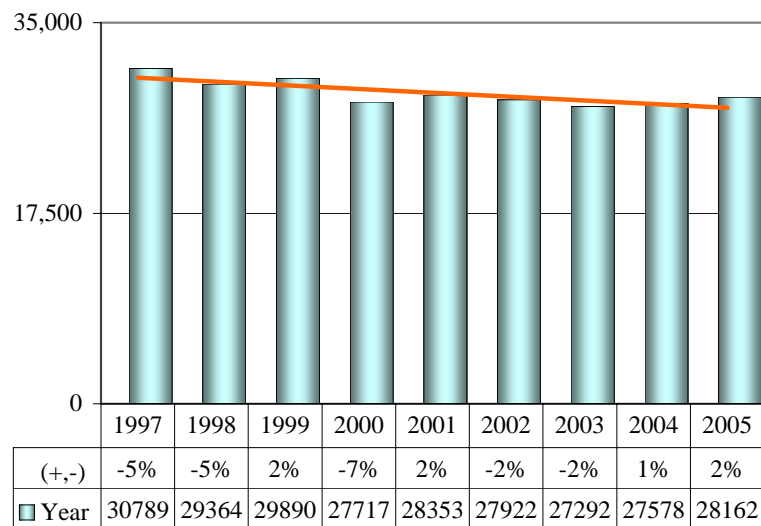


All ordinances, including truancy/curfew

MUNICIPAL ORDINANCES			
All Violations			
	2004	2005	(+, -)
Jan	144	255	77%
Feb	201	292	45%
Mar	295	272	-8%
Apr	214	256	20%
May	390	231	-41%
Jun	327	433	32%
Jul	489	722	48%
Aug	519	658	27%
Sep	341	604	77%
Oct	316	494	56%
Nov	406	265	-35%
Dec	270	240	-11%
YEAR	3,912	4,722	21%



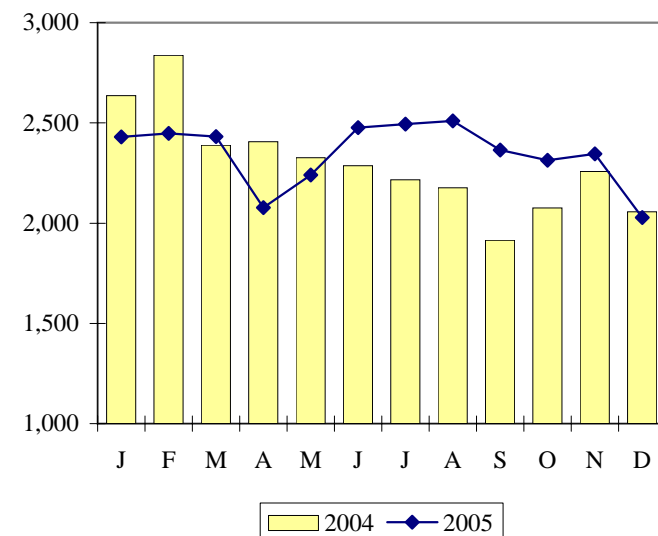
Data source: Records Dept / MOVN report



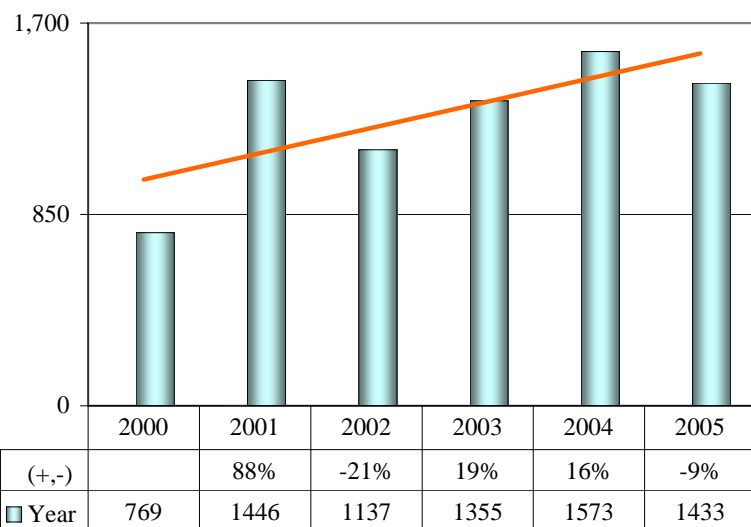
Does not include "Withdraw if Repaired" tickets

TRAFFIC Tickets

	2004	2005	(+, -)
Jan	2636	2430	-8%
Feb	2837	2448	-14%
Mar	2389	2432	2%
Apr	2406	2078	-14%
May	2327	2241	-4%
Jun	2286	2476	8%
Jul	2216	2494	13%
Aug	2176	2510	15%
Sep	1915	2365	23%
Oct	2076	2314	11%
Nov	2258	2346	4%
Dec	2056	2028	-1%
YEAR	27,578	28,162	2%

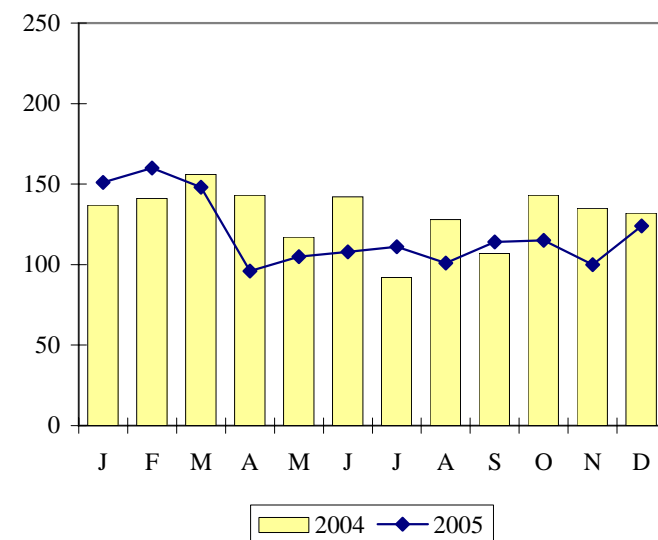


Data source: I.S. Dept / tcc-tally report

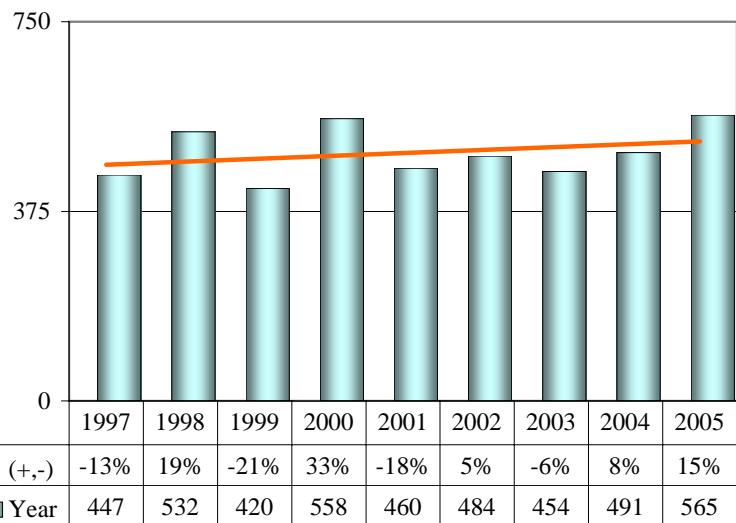


TRAFFIC Withdraw if Repaired Tickets

	2004	2005	(+, -)
Jan	137	151	10%
Feb	141	160	13%
Mar	156	148	-5%
Apr	143	96	-33%
May	117	105	-10%
Jun	142	108	-24%
Jul	92	111	21%
Aug	128	101	-21%
Sep	107	114	7%
Oct	143	115	-20%
Nov	135	100	-26%
Dec	132	124	-6%
YEAR	1,573	1,433	-9%

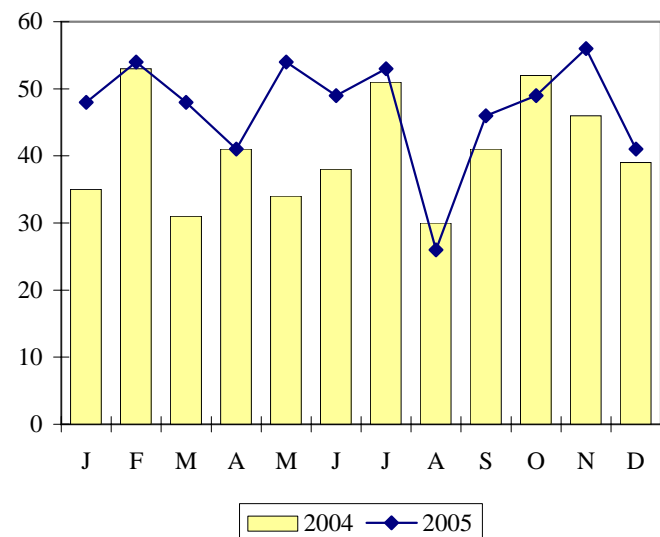


Data source: I.S. Dept / tcc-tally report

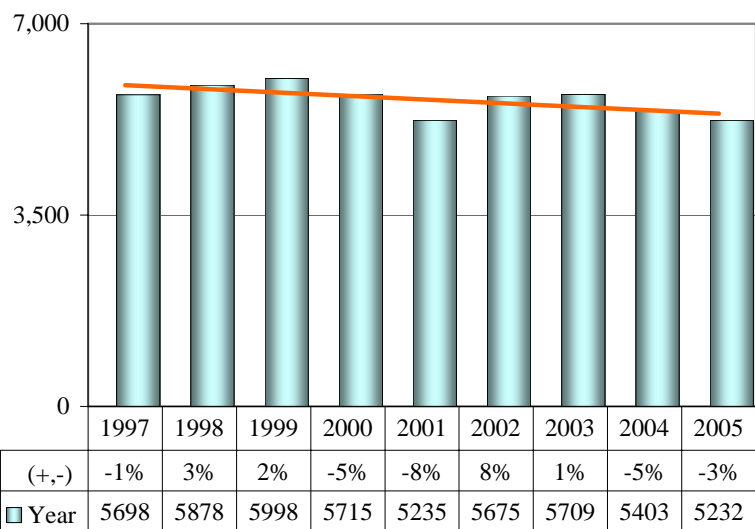


TRAFFIC D.U.I. Arrests

	2004	2005	(+, -)
Jan	35	48	37%
Feb	53	54	2%
Mar	31	48	55%
Apr	41	41	0%
May	34	54	59%
Jun	38	49	29%
Jul	51	53	4%
Aug	30	26	-13%
Sep	41	46	12%
Oct	52	49	-6%
Nov	46	56	22%
Dec	39	41	5%
YEAR	491	565	15%

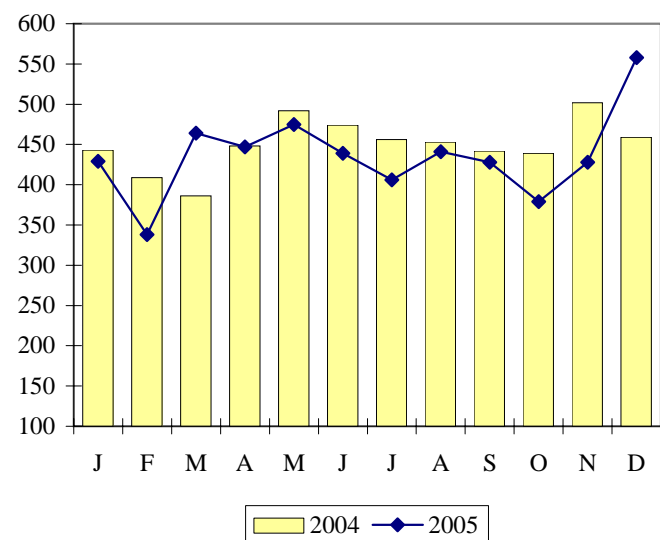


Data Source: I.S. Dept / dui-ppd.report



TRAFFIC Accidents

	2004	2005	(+, -)
Jan	443	429	-3%
Feb	409	338	-17%
Mar	386	464	20%
Apr	448	447	0%
May	492	475	-3%
Jun	474	439	-7%
Jul	456	406	-11%
Aug	453	441	-3%
Sep	442	428	-3%
Oct	439	379	-14%
Nov	502	428	-15%
Dec	459	558	22%
YEAR	5,403	5,232	-3%



Data source: I.S. Dept / accident.ppd.report

	MONTHLY MOVN VIOLATIONS	DEC	DEC	%	YEAR TO DATE	YEAR TO DATE	%
OFFENSE	DESCRIPTION	2004	2005	(+,-)	2004	2005	(+,-)
	ALCOHOLIC BEVERAGES						
3-03	HOURS OF SALE				5	6	20%
3-06	FOOD OR DRINK LICENSE						
3-07	SALE TO UNDERAGE PERSONS	1	1	0%	5	7	40%
3-08	POSS. OR CONSUM. BY MINOR	50	51	2%	809	605	-25%
3-09	UNDERAGE PERSONS ON PREMISE	3		-300%	27	20	-26%
3-17	CARRYING OPEN ALCOHOL		1	100%	8	21	163%
3-19	IMPROPER MARKING OF DELIVERY VEHICLES						
3-21	GENERAL CONDITION OF PREMISE						
3-24	LOITERING IN LICENSED PREMISE				8	2	-75%
3-27	TELEPHONE REQUIRED FOR REPORTING	1		-100%	8	10	25%
3-28	ILLEGAL ACTIVITIES ON THE PREMISES				13	2	-85%
3-51	RETAIL LICENSE WHERE REQUIRED						
3-52	VIOLATION OF LICENSE RESTRICTION						
3-57	FURNISHING FALSE INFORMATION						
3-64	FAILING TO REPORT A MANAGER						
3-97A							
	ANIMAL ORDINANCES						
4-02	ANIMALS RUNNING AT LARGE	2		-100%	14	8	-43%
4-08	CRUELTY TO ANIMALS				3	3	0%
4-18	INTERFERENCE W/ ANIMAL SHELTER PERS.				1		-100%
4-22	ANIMAL CONSIDERED A NUISANCE				4	7	75%
4-51	INOCULATION REQUIRED						
4-54	ATTACHMENT OF REGISTRATION TAGS						
	TRASH AND LITTER						
11-161	OPEN BURNING PROHIBITED				4	10	150%
13-003	LPTS WITH OCCUPANCY						
13-37	ACC. OF LITTER/ MOTOR VEHICLE PARTS				4	13	225%
13-41	LITTER ON PRIVATE PROPERTY		1	100%	7	18	157%
13-045	DEPOSITING LITTER INTO PUBLIC WAYS		4	400%	51	82	61%
13-046	THROWING LITTER FROM VEHICLES	1	6	500%	22	27	23%
13-77	GROWTH OF WEEDS PROHIBITED						
13-101	DECLARED NUISANCE MOTOR VEHICLES						
13-102	DAMAGED/INOPERABLE MOTOR VEHICLE	1		-100%	4	7	75%
15-2A9C	OFF-STREET PARKING						
	NOISE						
15-061	NOISE - MUSICAL INSTRUMENTS						
15-062	NOISE - RADIOS, PHONOGRAPHS, ETC	6	9	50%	221	206	-7%
15-063	NOISE - SOUND ADVERTISING DEVICES				1		-100%
15-064	NOISE - IN AIR/ ON WATER				1		-100%
15-70	YELLING SHOUTING ON A PUBLIC STREET	1	2	100%	24	101	321%
15-071	NOISE - VICINITY OF SCHOOLS OR HOSPITALS					6	600%
15-074	NOISE - TRANSPORTATION RAILS / PILLARS						
15-75	NOISE - LOUD MUSIC ON PUBLIC WAY	10	8	-20%	638	662	4%
15-101	ENUMERATION OF PARTICULAR NUISANCES						
	LICENSING						
18-27	LICENSE REQUIRED				18		-100%
18-206	DANCE HALL LICENSE REQUIRED						
18-266	MASSAGE EST. PERMIT REQUIRED		1	100%		1	100%
18-357	PEDDLERS RESTRICTIONS					1	100%
18-376	PEDDLERS LICENSE REQUIRED				8	27	238%
18-380	PEDDLERS LICENSE POSS./ DISPLAYED						
18-471	SECOND HAND DEALER LICENSE REQUIRED				1		
	CIGARETTE SALES						
18-592	CIGARETTE SALES TO MINORS		2	200%	33	32	-3%
18-611	CIGARETTE LICENSE REQUIRED					4	400%
18-619	SALE OF SINGLE CIGARETTE PROHIBITED					3	300%
20-001	STATE MIS. LAWS ADOPTED BY REFERENCE	4	2	-50%	130	127	-2%
20-002	STATE LAW PRINCIPLES CRIMINAL LIABILITY				2		-100%

	MONTHLY MOVN VIOLATIONS	DEC	DEC	%	YEAR TO DATE	YEAR TO DATE	%
OFFENSE	DESCRIPTION	2004	2005	(+,-)	2004	2005	(+,-)
	TOBACCO						
20-52	POSSESSION OF TOBACCO BY MINORS	9	7	-22%	105	166	58%
	CURFEW						
20-71	MINORS CURFEW: VIOLATION TO MINOR	28	39	39%	372	517	39%
20-72	MINORS CURFEW: PUBLIC ESTABLISHMENT				2		-100%
20-73	CURFEW - DAYTIME	8	3	-63%	26	67	158%
20-79	TRUANCY	31	14	-55%	91	126	38%
	DISORDERLY						
20-91	DISORDERLY CONDUCT	14	19	36%	131	388	196%
20-92	DISORDERLY HOUSES	4	5	25%	78	89	14%
20-96	OBSTRUCTING A PUBLIC WAY	6	8	33%	107	253	136%
20-97	PICKETING REGULATIONS						
20-98	THROWING MISSILES, ETC. PROHIBITED				3	15	400%
20-99	ILLEGAL POSS./ COMSUMP. IN PUBLIC PLACE	8	9	13%	233	314	35%
20-100	SPITTING	3	3	0%	19	59	211%
	PUBLIC NUISANCES						
2701.1	SALE/DISCHARGE OF FIREWORKS		1	100%	39	39	0%
20-103	OPERATION OF SKATEBOARDS PROHIBITED		7	700%	10	9	-10%
20-104	PRESENCE OF MINORS POSS/CON ALCOHOL	58	7	-88%	251	159	-37%
20-105	SOLICITATION TO COMMIT PROSTITUTION				2	13	550%
20-106	USE OF VEHICLE IN POSSESSION OF NARCOTICS				19	2	-89%
20-108	PANHANDLING	3	1	-67%	47	42	-11%
20-121	PUBLIC INDECENCY	8	10	25%	99	130	31%
20-141	GAMBLING				11	21	91%
*20-192	GRAFFITI - DEFACEMENT OF PROPERTY				0	2	200%
20-200	CHRONIC PUBLIC NUISANCE				2	8	300%
20-220	GANG LOITERING						
20-221	NARCOTICS LOITERING				9	10	11%
	WEAPONS						
20-161	WEAPONS - DISCHARGE PROHIBITED				2		-100%
20-161A	DISCHARGING FIREARM IN THE CITY				1	5	400%
20-188	CARRYING CONCEALED WEAPON PROHIBITED						
	OTHER					4	400%
27-149	LICENCE REQUIRED, HOTEL/MOTEL						
28-227	WALKING/PLAYING ON THE HIGHWAY	7	10	43%	88	102	16%
28-496	BICYCLE LAMPS & OTHER EQUIPMENT REQ'D	1	8	700%	71	132	86%
30-71	TAXICABS OWNER'S LICENSE REQUIRED	1		-100%	1		-100%
5-18	OCCUPANCY OF UNINHABITABAL BLDG					8	800%
5-406	OCCUPYING PLACARDED STRUCTURE						
	OTHER/ UNKNOWN	1	1	0%	20	24	20%
*NEW OFFENSE	TOTALS	270	240	-11%	3913	4722	21%

MOVNS - QUALITY OF LIFE

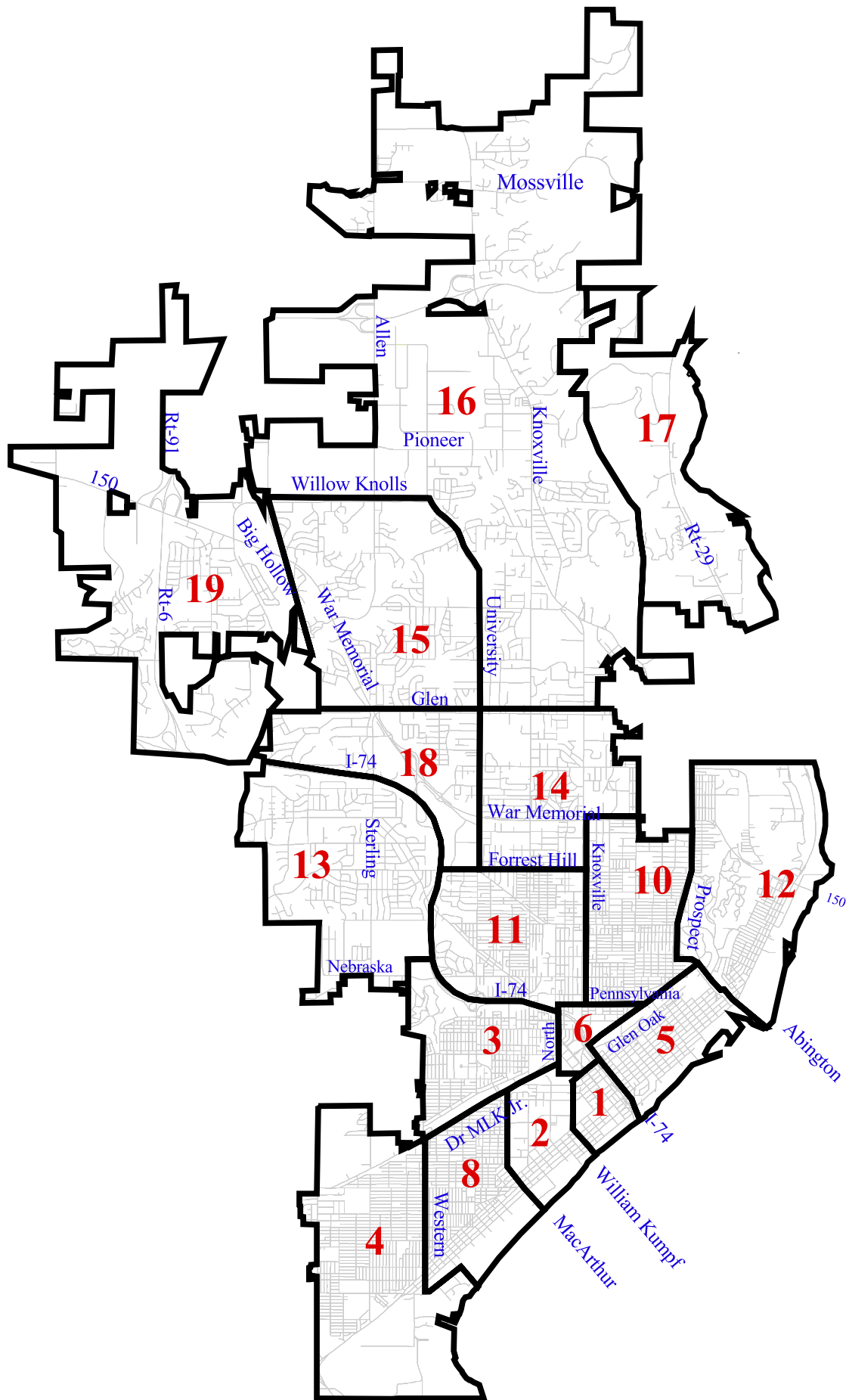
2005

		JAN	FEB	MAR	APR	MAY	JUN	JUL	AUG	SEP	OCT	NOV	DEC	YTD	% (+,-)
ALCOHOLIC BEVERAGES															
3-17	CARRYING OPEN ALCOHOL	1	1	1	1	1	3	4	3	1	1	3	1	21	163%
TRASH AND LITTER															
13-41	LITTER ON PRIVATE PROPERTY	2			2	4	1	2	2	2		2	1	18	157%
13-045	DEPOSITING LITTER INTO PUBLIC WAYS	2	4	6	6	3	5	16	16	11	4	5	4	82	61%
13-046	THROWING LITTER FROM VEHICLES	1	1	3			3	4	2	5		2	6	27	29%
13-102	DAMAGED/INOPERABLE MOTOR VEHICLE	3	3	1										7	133%
NOISE															
15-062	NOISE - RADIOS, PHONOGRAPHS, ETC	15	12	8	18	4	11	45	26	22	15	21	9	206	-4%
15-70	YELLING SHOUTING ON A PUBLIC STREET	2	1	4	15	10	5	9	15	10	17	11	2	101	339%
15-071	NOISE - VICINITY OF SCHOOLS		5	1										6	600%
15-75	NOISE - LOUD MUSIC ON PUBLIC WAY	10	14	17	37	15	99	170	121	102	59	10	8	662	5%
CURFEW															
20-71	MINORS CURFEW: VIOLATION TO MINOR	9	11	18	18	19	93	114	83	43	17	31	39	495	44%
20-73	CURFEW - DAYTIME	8	11	5	11	10	1		1	4	6	7	3	67	272%
20-79	TRUANCY	18	16	13	1	11			8	24	15	6	14	126	110%
DISORDERLY															
20-91	DISORDERLY CONDUCT	27	36	39	15	24	14	38	48	53	45	30	19	388	232%
20-92	DISORDERLY HOUSES	1		4	9	10	6	13	12	20	4	4	5	88	19%
20-96	OBSTRUCTING A PUBLIC WAY	18	7	11	13	11	30	37	52	34	10	5	8	236	134%
20-99	ILLEGAL POSS./ COMSUMP. IN PUBLIC PLACE	7	17	13	9	11	32	57	50	56	30	23	9	314	40%
20-100	SPITTING	5	8	2	4	1	4	7	12	6	4	3	3	59	269%
PUBLIC NUISANCES															
20-105	SOLICITATION TO COMMIT PROSTITUTION						1	3	3	4	1	1		13	550%
20-108	PANHANDLING	4	2	1	4	1	6	7	4	1	6	5	1	42	-5%
20-121	PUBLIC INDECENCY	6	3	7	6	6	6	23	14	28	14	7	10	130	43%
20-141	GAMBLING							2	2		12	5		21	91%
20-200	CHRONIC PUBLIC NUISANCE			2	2		2		2					8	300%
20-221	NARCOTICS LOITERING	8					1	1						10	11%
OTHER															
28-11 / 227	WALKING /PLAYING ON THE HIGHWAY	4	12	5	6	6	7	12	12	7	15	6	10	86	6%
QOL MOVN TOTAL		151	164	161	177	147	330	564	488	433	275	187	152	3213	49%
2005 INCREASE / DECREASE		77	87	74	77	-76	94	184	82	209	105	13	13	1062	
2005 % CHANGE		104%	113%	85%	77%	-34%	40%	48%	20%	93%	62%	7%	9%	49%	

MOVNS - QUALITY OF LIFE

2004

		JAN	FEB	MAR	APR	MAY	JUN	JUL	AUG	SEP	OCT	NOV	DEC	YTD	
	ALCOHOLIC BEVERAGES														
3-17	CARRYING OPEN ALCOHOL		1		1		1		4	1				8	
	TRASH AND LITTER														
13-41	LITTER ON PRIVATE PROPERTY					2	2		3					7	
13-045	DEPOSITING LITTER INTO PUBLIC WAYS	3	2	2	5	5	9	1	11	8		5		51	
13-046	THROWING LITTER FROM VEHICLES		4		2	1	4	4	2	3		1	1	21	
13-102	DAMAGED/INOPERABLE MOTOR VEHICLE				3								1	3	
	NOISE														
15-062	NOISE - RADIOS, PHONOGRAPHS, ETC	8	6	10	15	18	22	34	44	27	16	15	6	215	
15-70	YELLING SHOUTING ON A PUBLIC STREET		1			5	1	2	4	3	7		1	23	
15-071	NOISE - VICINITY OF SCHOOLS OR HOSPITALS													0	
15-75	NOISE - LOUD MUSIC ON PUBLIC WAY	16	13	19	26	69	72	163	147	58	25	20	10	628	
	CURFEW														
20-71	MINORS CURFEW: VIOLATION TO MINOR	10	1	16	12	20	47	72	85	38	25	18	28	344	
20-73	CURFEW - DAYTIME	2				8			1		2	5	8	18	
20-79	TRUANCY	3		3		4		1	1	9	11	28	31	60	
	DISORDERLY														
20-91	DISORDERLY CONDUCT		1			7	11	22	18	16	22	20	14	117	
20-92	DISORDERLY HOUSES	3	1	6	4	11	13	9	7	7	6	7	4	74	
20-96	OBSTRUCTING A PUBLIC WAY	3	11	5	5	8	9	9	13	7	15	16	6	101	
20-99	ILLEGAL POSS./ COMSUMP. IN PUBLIC PLACE	8	12	12	14	36	31	30	31	25	11	15	8	225	
20-100	SPITTING	1	2			2		1	1	2	7		3	16	
	PUBLIC NUISANCES														
20-105	SOLICITATION TO COMMIT PROSTITUTION			1					1					2	
20-108	PANHANDLING	7	8	1	3	3	3	6	4	4	4	1	3	44	
20-121	PUBLIC INDECENCY	8	6	8	5	11	5	14	17	5	4	8	8	91	
20-141	GAMBLING	1			1	2	1	4	2					11	
20-200	CHRONIC PUBLIC NUISANCE									2				2	
20-221	NARCOTICS LOITERING	1	1			3	2		1			1		9	
	OTHER														
28-227	WALKING /PLAYING ON THE HIGHWAY		7	4	4	8	3	8	9	9	15	14	7	81	
	QOL MOVN TOTAL	74	77	87	100	223	236	380	406	224	170	174	139	2151	



Square Miles		Dispatched Calls			Case Numbers Assigned		
	Police District	December		Police District	December		Police District
2005		2004	2005		2004	2005	
0.3	1	1028	799	4	209	206	10
0.3	6	606	679	10	173	186	16
0.7	2	517	522	16	322	186	4
1.1	5	451	517	11	131	156	11
1.4	3	578	463	8	166	142	8
1.4	8	393	447	5	137	141	13
1.6	10	405	422	13	112	127	18
1.7	18	271	336	18	106	112	2
1.8	11	356	323	2	115	102	5
2.0	14	353	312	3	94	93	14
2.6	12	328	311	12	77	93	1
2.9	17	242	286	1	112	89	3
3.0	13	270	268	14	80	86	19
3.2	4	261	262	19	96	86	12
3.4	15	214	187	15	88	79	15
5.6	19	150	145	6	65	61	6
11.9	16	12	10	17	3	4	17
		6,435	6,289		2,086	1,949	

Data source: IS Dept / kad0m16 report

DISTRICT PART I CRIMES (1-6)

December 2005

Districts		1			2			3			4			5			6		
		2004	2005	%	2004	2005	%	2004	2005	%	2004	2005	%	2004	2005	%	2004	2005	%
Murder	Month	0	0	0	0	0	0	0	0	0	0	0	0	0	0	0	0	0	0
	YTD	4	1	-75	2	1	-50	1	1	0	6	5	-17	0	1	100	0	0	0
Criminal Sexual Assault	Month	0	0	0	2	3	50	0	1	100	3	2	-33	2	0	-100	1	0	-100
	YTD	6	1	-83	25	11	-56	13	10	-23	18	21	17	23	8	-65	15	16	7
Robbery	Month	1	0	-100	3	0	-100	2	1	-50	2	5	150	3	2	-33	3	0	-100
	YTD	12	10	-17	23	15	-35	44	40	-9	59	66	12	35	42	20	11	12	9
Aggravated Assault (Reported)	Month	7	2	-71	8	5	-38	10	3	-70	29	25	-14	16	14	-13	12	4	-67
	YTD	67	62	-7	65	60	-8	83	56	-33	322	299	-7	162	181	12	60	71	18
VIOLENT CRIMES SUB-TOTAL	Month	8	2	-75	13	8	-38	12	5	-58	34	32	-6	21	16	-24	16	4	-75
	YTD	89	74	-17	115	87	-24	141	107	-24	405	391	-3	220	232	5	86	99	15
Burglary	Month	3	1	-67	5	11	120	11	7	-36	25	18	-28	6	13	117	1	0	-100
	YTD	38	32	-16	64	66	3	203	161	-21	372	306	-18	116	115	-1	23	23	0
Theft	Month	20	25	25	23	15	-35	23	15	-35	45	25	-44	25	11	-56	6	5	-17
	YTD	246	247	0	224	223	0	398	396	-1	423	435	3	235	263	12	75	83	11
Motor Vehicle Theft	Month	2	3	50	6	10	67	7	7	0	43	8	-81	11	5	-55	0	0	0
	YTD	18	33	83	57	56	-2	47	50	6	151	161	7	61	48	-21	11	13	18
Arson	Month	0	0	0	0	0	0	0	0	0	2	2	0	0	0	0	0	0	0
	YTD	0	1	100	1	1	0	1	2	100	28	27	-4	9	7	-22	0	1	100
PROPERTY CRIMES SUB-TOTAL	Month	25	29	16	34	36	6	41	29	-29	115	53	-54	42	29	-31	7	5	-29
	YTD	302	313	4	346	346	0	649	609	-6	974	929	-5	421	433	3	109	120	10
TOTAL	Month	33	31	-6	47	44	-6	53	34	-36	149	85	-43	63	45	-29	23	9	-61
	YTD	391	387	-1	461	433	-6	790	716	-9	1379	1320	-4	641	665	4	195	219	12
DRUG OFFENSES	Month	3	5	67	7	3	-57	1	3	200	27	21	-22	11	6	-45	2	1	-50
	YTD	57	65	14	51	94	84	66	75	14	281	348	24	158	180	14	14	21	50

Includes all incidents where a report was issued, founded AND unfounded.

Data source: I.S. Dept / rim-part report

DISTRICT PART I CRIMES (8-14)

December 2005

Districts		8			10			11			12			13			14		
		2004	2005	%	2004	2005	%	2004	2005	%	2004	2005	%	2004	2005	%	2004	2005	%
Murder	Month	0	0	0	1	0	-100	0	0	0	0	0	0	0	0	0	0	0	0
	YTD	0	3	300	1	0	-100	0	0	0	0	0	0	0	0	0	0	0	0
Criminal Sexual Assault	Month	2	1	-50	1	0	-100	0	0	0	3	2	-33	2	1	-50	0	0	0
	YTD	13	14	8	24	14	-42	16	9	-44	19	25	32	7	9	29	4	4	0
Robbery	Month	2	2	0	4	4	0	6	3	-50	2	2	0	2	1	-50	1	1	0
	YTD	40	40	0	55	61	11	21	43	105	20	18	-10	13	21	62	14	12	-14
Aggravated Assault	Month	4	13	225	9	7	-22	13	9	-31	4	8	100	11	3	-73	2	0	-100
	YTD	155	184	19	155	170	10	147	137	-7	57	33	-42	91	92	1	24	17	-29
VIOLENT CRIMES SUB-TOTAL	Month	8	16	100	15	11	-27	19	12	-37	9	12	33	15	5	-67	3	1	-67
	YTD	208	241	16	235	245	4	184	189	3	96	76	-21	111	122	10	42	33	-21
Burglary	Month	12	11	-8	13	20	54	11	13	18	2	4	100	18	15	-17	14	5	-64
	YTD	217	252	16	246	327	33	164	178	9	79	78	-1	119	150	26	57	67	18
Theft	Month	26	20	-23	31	37	19	27	21	-22	15	11	-27	20	19	-5	29	24	-17
	YTD	367	384	5	522	488	-7	308	290	-6	165	189	15	226	224	-1	276	293	6
Motor Vehicle Theft	Month	23	20	-13	10	9	-10	1	6	500	3	5	67	8	6	-25	0	0	0
	YTD	94	121	29	89	126	42	41	70	71	26	43	65	62	59	-5	7	15	114
Arson	Month	0	0	0	0	0	0	1	1	0	0	0	0	0	0	0	0	0	0
	YTD	10	17	70	15	12	-20	14	4	-71	4	9	125	6	3	-50	3	1	-67
PROPERTY CRIMES SUB-TOTAL	Month	61	51	-16	54	66	22	40	41	3	20	20	0	46	40	-13	43	29	-33
	YTD	688	774	13	872	953	9	527	542	3	274	319	16	413	436	6	343	376	10
TOTAL	Month	69	67	-3	69	77	12	59	53	-10	29	32	10	61	45	-26	46	30	-35
	YTD	896	1015	13	1107	1198	8	711	731	3	370	395	7	524	558	6	385	409	6
DRUG OFFENSES	Month	20	17	-15	12	13	8	6	4	-33	0	4	400	1	4	300	0	5	500
	YTD	250	290	16	174	193	11	93	117	26	40	45	13	29	37	28	14	24	71

Includes all incidents where a report was issued, founded AND unfounded.

Data source: I.S. Dept / rim-part report

DISTRICT PART I CRIMES (15-19)

December 2005

Districts		15			16			17			18			19			
		2004	2005	%	2004	2005	%	2004	2005	%	2004	2005	%	2004	2005	%	
Murder	Month	0	0	0	0	0	0	0	0	0	0	0	0	0	0	0	
	YTD	0	0	0	0	0	0	0	0	0	0	0	0	0	0	0	
Criminal Sexual Assault	Month	1	0	-100	0	0	0	0	0	0	0	0	0	0	0	0	
	YTD	4	4	0	8	5	-38	0	0	0	5	2	-60	1	2	100	
Robbery	Month	0	0	0	0	0	0	0	0	0	0	0	0	1	0	-100	
	YTD	3	3	0	10	13	30	0	0	0	10	12	20	5	4	-20	
Aggravated Assault	Month	1	0	-100	4	1	-75	0	0	0	1	4	300	0	1	100	
	YTD	14	21	50	33	20	-39	1	0	-100	25	28	12	12	16	33	
VIOLENT CRIMES SUB-TOTAL	Month	2	0	-100	4	1	-75	0	0	0	1	4	300	1	1	0	
	YTD	21	28	33	51	38	-25	1	0	-100	40	42	5	18	22	22	
Burglary	Month	4	0	-100	16	9	-44	0	0	0	3	5	67	5	1	-80	
	YTD	40	38	-5	131	127	-3	2	3	50	53	38	-28	54	60	11	
Theft	Month	13	11	-15	42	32	-24	0	0	0	44	42	-5	27	24	-11	
	YTD	147	174	18	395	393	-1	2	8	300	474	498	5	206	247	20	
Motor Vehicle Theft	Month	1	2	100	2	1	-50	0	0	0	3	2	-33	0	1	100	
	YTD	15	10	-33	32	22	-31	0	0	0	17	17	0	8	16	100	
Arson	Month	0	0	0	1	0	-100	0	0	0	0	0	0	0	0	0	
	YTD	1	1	0	8	4	-50	0	0	0	0	2	200	4	3	-25	
PROPERTY CRIMES SUB-TOTAL	Month	18	13	-28	61	42	-31	0	0	0	50	49	-2	32	26	-19	
	YTD	203	223	10	566	546	-4	4	11	175	544	555	2	272	326	20	
TOTAL	Month	20	13	-35	65	43	-34	0	0	0	51	53	4	33	27	-18	
	YTD	224	251	12	617	584	-5	5	11	120	584	597	2	290	348	20	
DRUG OFFENSES	Month	1	4	300	0	0	0	0	2	200	1	1	0	2	0	-100	
	YTD	22	15	-32	20	24	20	0	2	200	26	38	46	7	10	43	

Includes all incidents where a report was issued, founded AND unfounded.

Data source: I.S. Dept / rim-part report

MURDER

1966 - 2005

